

Product datasheet for **RG204562**

ZBTB22 (NM_005453) Human Tagged ORF Clone

Product data:

Product Type:	Expression Plasmids
Product Name:	ZBTB22 (NM_005453) Human Tagged ORF Clone
Tag:	TurboGFP
Symbol:	ZBTB22
Synonyms:	BING1; fru; fruitless; ZBTB22A; ZNF297; ZNF297A
Mammalian Cell Selection:	Neomycin
Vector:	pCMV6-AC-GFP (PS100010)
E. coli Selection:	Ampicillin (100 ug/mL)



[View online »](#)

ORF Nucleotide Sequence:

>RG204562 representing NM_005453
 Red=Cloning site Blue=ORF Green=Tags(s)

TTTTGTAATACGACTCACTATAGGGCGGCCGGAATTCGTCGACTGGATCCGGTACCGAGGAGATCTGCC
 GCC**CGGATCGCC**

ATGGAGCCATCTCCTCTGTCTCCAGTGGGGCAGCACTTCCCCTGCCGCTGTCGCTGGCTCCGCCCCAC
 TACCCCTGCCAGCAGCTGCAGTGGTACATGTGTCTTCCCTGAGGTGACCAGTGCCCTCTTGGAGTCCCT
 CAATCAGCAGCGTCTGCAGGGCCAGCTCTGCGATGTATCTATCAGAGTGCAGGGCCGGGAGTTCCGGGT
 CATCGGGCTGTCTGGCTGCCTCTCCCTTACTTCCATGATCAGGTCTACTCAAAGGCATGACCTCCA
 TCTCGTGTCCAGTGTATGGACCCAGGCGCCTTGGAGTGTCTAGCCTCCGTTACTGCGCCCT
 CAGCATGGCTGCTGTGACATTGTCAACTTCTTACAGTGGGTCTGTGCTCCAAATGTGGCACATTGTG
 GACAAGTGCAGTGAAGTACTCCGAGAAGCCGGGCTCAGTACCACCACCATCACTACTGCTGCAGCCA
 CCTCTGCTACTGTCCCTGGTGTGGGGTCCATCCGGGAGTGGGGCACTGTGGCCCTGCTACCATGGG
 CTCTGCGCGCTCCATGCCTCCAGCCGGCCAGTGAAGAATCAATCTCCAGCAGCAGCAACTACTCAGC
 CCCAGGGAGTCCACTGATTTCTCATCTTCTCCCAAGAGGCATTTGCAGCTTCTGCAAGTGGCAGTGGGG
 AGCGTTCGAGGAGGTGGCCCTGTATTCCAGCCCTGTCGTTGGCAGTGGAGGGGCCACATCTGAAAGCT
 GCTGCTGGAGGCAGATGAGCTGTGCGATGATGGTGGGGATGGGAGGGGGCAGTGGTTTCTGGGGCTGGG
 CTCCGGAGACCCACCTACACACCCCTAGCATCATGCCACAGAAACACTGGGTATACGTGAAGCGAGGTG
 GTAATTGCCAGCGCCAGCACCCCTGGTCCCCAAGACCAGATCTGGAGGAGGAAGAGGAGGAGGAAGA
 TCTGGTGTGACCTGTGAGGATGATGAAGTGAAGAACTAGGGGTAGCTCCAGGGTCCAGTGGGGGA
 GGGCTGAGGCTACCCTCAGCATAAGTGTGTCGTCACCTGAGTGAAGGAGGAGGAGGAGGAGGAGGAGG
 AGGTCAACTTCTGTGAGTCTCCAATGACTTTGGCCCATATGAGGGTGGGGTCTGTGGCAGTCTTGA
 TGAAGTCAAGGGGGCCAACTCCCTCTTCTATGCCCTCCACCCCTCTCGACCGCTCTTCCCTTGGAC
 ATGCAGGGCAACAGATCCTGGTCTTCCGTCGTCGTTCTCATCTCATCTCACAGGCTCTGGCCAAC
 CACCAGGGAACCAAGCAGAACACGGGCAGTGACCGTGGGGGGCAGTCCGGTGGGAGCCTGGGTGTGCC
 GGGTAGCGTTGGTGGGGTCCCTGGAGGGACTGGCAGTGGGGACGGGAATAAGATCTTCTGTGCCATTGT
 GGAAGGCCTTCTCCACAAGAGCATGCGGGACCGGCACGTGAACATGCACCTCAATCTGCGCCGTTTGG
 ACTGCCCCGTGTGCAACAAAAGTTCAAGATGAAGCACCATCTGACTGAGCAGATGAAGACGCACACAGG
 TCTCAAGCCCTACGAGTTCGGAGTCTGCGCAAGAAGTTCATGTGGCGAGACAGCTTTCATGCGCCACCGA
 GGACTGTGAGCGCCGGCACCCCTGGGCGGGTTCGGGGCCGTACCTGGGCTGGGACTCCACGGGGC
 CATCTTGCCTCAAGAGAGAGTCTCCCGAGTGGGCGGGGGCAGCGGGCAGCAAGCGAGTGGCGCCAC
 GCCCCGTCCAGCAGACGTGTCTGGTCCCACCCAGAGTCCACAAGTGGAGATGGGCTTCGGTGGAGGT
 GGAGGAGCAAAC

ACGCGTACGCGGGCCGCTCGAG - GFP Tag - GTTTAA

Protein Sequence:

>RG204562 representing NM_005453
 Red=Cloning site Green=Tags(s)

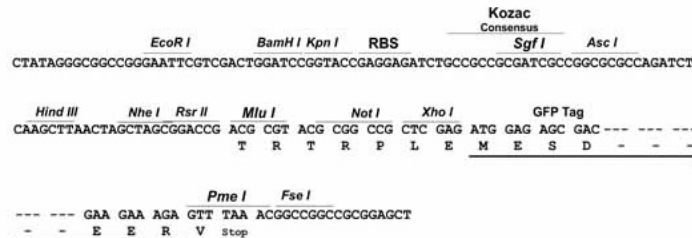
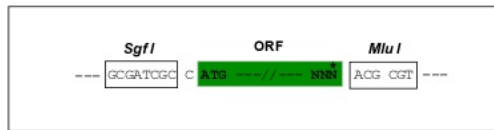
MEPSPLSPSGAALPLPLSLAPPPLPLPAAAVVHVSFPEVTSALLESLNQQRLQGGQLCDVSIKRVQGREFRA
 HRAVLAASSPYFHDQVLLKGMTSISLPSVMDPGAFETVLASAYTGRLSMAAADIVNFLTIVGSLVLMWHIV
 DKCTELLREGRASATTTITTAATSVTVPAGVPSGSGGTVPATMGSARSHASSRASENQSPSSSNYFS
 PRESTDFFFFSSQEAFAASAVGSGERRGGPVFPAPVVGSGGATSGKLLLEADELCDDGGDGRGAVVPGAG
 LRRPTYTPPSIMPQKHWVYVYKRGNCPPAPLVPQDPLEEEEEEDLVLTCEDDEEELGGSSRPVGG
 GPEATLSISDVRTLSEPPDKGEEQVNFCESSNDFGPYEGGGPVAGLDDSGGTPSSYAPSHPPRLLPLD
 MQGNQILVFPSSSSSSSQAPGQPPGNQAEHGAIVVGGTAVGSLGVPVGGVGGTGGSDGNKIFLCHC
 GKAFSHKSMRDRHVMHLNLRPFDCPVCNKKFKMKHHLTEHMKHTHTGLKPYECGVCCKFMWRDSFMRHR
 GHCERRHRLGGVAVPGPTPTGPSLPSKRESPVGGSGDEASAATPPSSRRVWSPRVRHVKVEMGFGGG
 GGAN

TRTRPLE - GFP Tag - V

Restriction Sites: SgfI-MluI

Cloning Scheme:

Cloning sites used for ORF Shutting:



ACCN: NM_005453

ORF Size: 1902 bp

OTI Disclaimer: The molecular sequence of this clone aligns with the gene accession number as a point of reference only. However, individual transcript sequences of the same gene can differ through naturally occurring variations (e.g. polymorphisms), each with its own valid existence. This clone is substantially in agreement with the reference, but a complete review of all prevailing variants is recommended prior to use. [More info](#)

OTI Annotation: This clone was engineered to express the complete ORF with an expression tag. Expression varies depending on the nature of the gene.

Components: The ORF clone is ion-exchange column purified and shipped in a 2D barcoded Matrix tube containing 10ug of transfection-ready, dried plasmid DNA (reconstitute with 100 ul of water).

Reconstitution Method:

1. Centrifuge at 5,000xg for 5min.
2. Carefully open the tube and add 100ul of sterile water to dissolve the DNA.
3. Close the tube and incubate for 10 minutes at room temperature.
4. Briefly vortex the tube and then do a quick spin (less than 5000xg) to concentrate the liquid at the bottom.
5. Store the suspended plasmid at -20°C. The DNA is stable for at least one year from date of shipping when stored at -20°C.

RefSeq: [NM_005453.3](#), [NP_005444.3](#)

RefSeq Size: 2647 bp

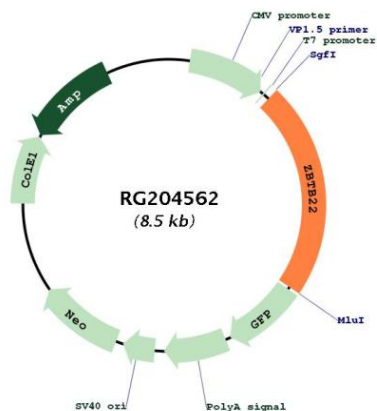
RefSeq ORF: 1905 bp

Locus ID: 9278

UniProt ID: [O15209](#)

Cytogenetics: 6p21.32
Domains: BTB, zf-C2H2
Protein Families: Transcription Factors
Gene Summary: May be involved in transcriptional regulation.[UniProtKB/Swiss-Prot Function]

Product images:



Circular map for RG204562