

## Product datasheet for **RG204510**

### **RAB37 (NM\_001006638) Human Tagged ORF Clone**

#### Product data:

**Product Type:** Expression Plasmids  
**Product Name:** RAB37 (NM\_001006638) Human Tagged ORF Clone  
**Tag:** TurboGFP  
**Symbol:** RAB37  
**Mammalian Cell Selection:** Neomycin  
**Vector:** pCMV6-AC-GFP (PS100010)  
**E. coli Selection:** Ampicillin (100 ug/mL)  
**ORF Nucleotide Sequence:** >RG204510 representing NM\_001006638  
Red=Cloning site Blue=ORF Green=Tags(s)

TTTTGTAATACGACTCACTATAGGGCGGCCGGAATTCGTCGACTGGATCCGGTACCGAGGAGATCTGCC  
GCC**CGATCGCC**

ATGACGGGCACGCCAGGCGCCGTTGCCACCCGGGATGGCGAGGCCCCCGAGCGCTCCCCGCCCTGCAGTC  
CGAGCTACGACCTCACGGCAAGGTGATGCTTCTGGGAGACACAGGCGTCGGCAAACATGTTTCCTGAT  
CCAATTCAAAGACGGGCCTTCTGTCCGGAACCTTCATAGCCACCGTCGGCATAGACTTCAGGAACAAG  
GTGGTGAAGTGGATGGCGTGAGAGTGAAGCTGCAGATCTGGGACACCGCTGGGACGGAACGGTTCGAA  
CGGTACCCATGCTTATTACAGAGATGCTCAGGCTTCTGCTGTATGACATCACCAAAATCTTC  
TTTCGACAAACATCAGGGCCTGGCTCACTGAGATTCATGAGTATGCCAGAGGGACGTGGTGATCATGCTG  
CTAGGCAACAAGCGGATATGAGCAGCGAAAGAGTATCCGTTCCGAAGACGGAGAGACCTTGGCCAGGG  
AGTACGGTGTTCCTTCTGGAGACCAGCGCAAGACTGGCATGAATGTGGAGTTAGCCTTCTGGCCAT  
CGCCAAGGAACTGAAATACCGGGCCGGGCATCAGGCGGATGAGCCAGCTTCCAGATCCGAGACTATGTA  
GAGTCCCAGAAGAAGCGCTCCAGCTGCTGCTCCTCATG

**ACGCGTACGCGGCCGCTCGAG** - GFP Tag - GTTTAA

**Protein Sequence:** >RG204510 representing NM\_001006638  
Red=Cloning site Green=Tags(s)

MTGTPGAVATRDGEAPERSPPCSPSYDLTGKVMLLGDTGVGKTCFLIQFKDGAFLSGTFIATVGDIFRNK  
VVTVDGVRVKLQIWDTAGQERFRSVTHAYYRDAQALLLLYDITNKSSFDNIRAWL TEIHEYAQRDVVIML  
LGNKADMSSERVIRSEDGETLAREYGVPFLETSAKTGMNVELAFLAIKELKYRAGHQADEPSFQIRDYV  
ESQKKRSSCCSFM

**TRTRPLE** - GFP Tag - V

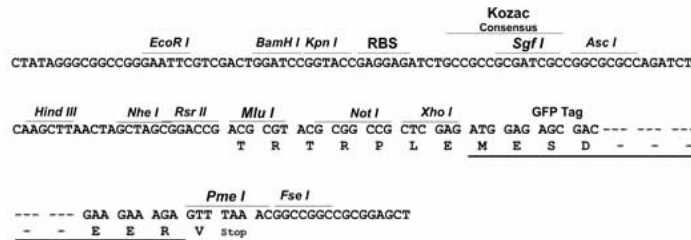
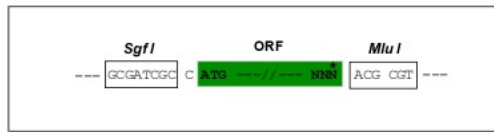


[View online »](#)

Restriction Sites: Sgfl-MluI

Cloning Scheme:

Cloning sites used for ORF Shutting:



ACCN: NM\_001006638

ORF Size: 669 bp

OTI Disclaimer: The molecular sequence of this clone aligns with the gene accession number as a point of reference only. However, individual transcript sequences of the same gene can differ through naturally occurring variations (e.g. polymorphisms), each with its own valid existence. This clone is substantially in agreement with the reference, but a complete review of all prevailing variants is recommended prior to use. [More info](#)

OTI Annotation: This clone was engineered to express the complete ORF with an expression tag. Expression varies depending on the nature of the gene.

Components: The ORF clone is ion-exchange column purified and shipped in a 2D barcoded Matrix tube containing 10ug of transfection-ready, dried plasmid DNA (reconstitute with 100 ul of water).

Reconstitution Method: 

1. Centrifuge at 5,000xg for 5min.
2. Carefully open the tube and add 100ul of sterile water to dissolve the DNA.
3. Close the tube and incubate for 10 minutes at room temperature.
4. Briefly vortex the tube and then do a quick spin (less than 5000xg) to concentrate the liquid at the bottom.
5. Store the suspended plasmid at -20°C. The DNA is stable for at least one year from date of shipping when stored at -20°C.

RefSeq: [NM\\_001006638.3](#)

RefSeq Size: 1972 bp

RefSeq ORF: 672 bp

Locus ID: 326624

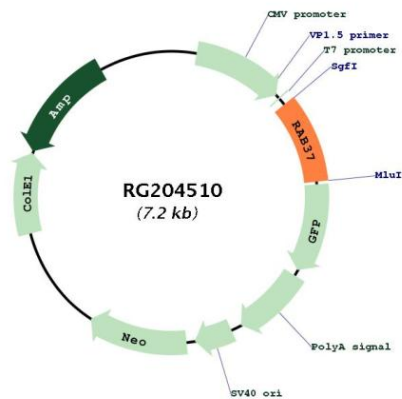
UniProt ID: [Q96AX2](#)

Cytogenetics: 17q25.1

Protein Families: Druggable Genome, Secreted Protein

Gene Summary: Rab proteins are low molecular mass GTPases that are critical regulators of vesicle trafficking. For additional background information on Rab proteins, see MIM 179508.[supplied by OMIM, Apr 2006]

### Product images:



Circular map for RG204510