

## Product datasheet for **RG204501**

### **FAM210B (NM\_080821) Human Tagged ORF Clone**

#### Product data:

**Product Type:** Expression Plasmids  
**Product Name:** FAM210B (NM\_080821) Human Tagged ORF Clone  
**Tag:** TurboGFP  
**Symbol:** FAM210B  
**Synonyms:** 5A3; C20orf108; dj1167H4.1  
**Mammalian Cell Selection:** Neomycin  
**Vector:** pCMV6-AC-GFP (PS100010)  
**E. coli Selection:** Ampicillin (100 ug/mL)  
**ORF Nucleotide Sequence:** >RG204501 representing NM\_080821  
 Red=Cloning site Blue=ORF Green=Tags(s)

TTTTGTAACTACGACTCACTATAGGGCGGCCGGAATTCGTCGACTGGATCCGGTACCGAGGAGATCTGCC  
 GCC**CGATCGCC**

ATGGCCGGGTGCTGGCGTTGCTGGGTCCGGCAGGCAGGGTGGGCGCCGGGTCCGGCTCGCGCCACCT  
 GGCTCTGGGCGCCACCGCCCTGCGCCCGCCGCGCCCTGGCCCTGGCCCTGCTCCGCGCCAGGCTAGA  
 CGCCCGGCTGCTCCGCACGGCGCGCGGGGACTGCCGCGGCCACCGAGACCCAGCCAGGCCACGGGGACA  
 ACAGGCAGCAGCGTCAGCTGCACAGAGGAGAAAAAGCAAAGTACAGCAACTGAAAAAGATTTTTC  
 AAGAGTATGGCACTGTTGGCGTGCATTGCACATTGGAATCTCATTAATTTCTTGGGCATATTTTACAT  
 GGTGTGTCAAGTGGTGTGGACATGCCTGCAATCCTGCTGAAACTCGGATTTAAAGAGTCCCTGGTACAG  
 TCAAAAATGGCAGCAGGCACAAGTACCTTCGTGGTGGCCTATGCAATCCACAAGCTGTTTGTGCCAGTGA  
 GAATCAGCATTACGCTAGTCTCTGTGCCCTTGATTGTCAGATATTTTCGAAAAGTGGGATTTTTTAAACC  
 TCCAGCTGCAAAACCT

ACGCGTACGCGGCCGCTCGAG - GFP Tag - GTTTAA

**Protein Sequence:** >RG204501 representing NM\_080821  
 Red=Cloning site Green=Tags(s)

MAGLLALLGPAGRVGARVRPRATWLLGATAPCAPPLALALLPPRLDARLLRTARGDCRHHQDPSQATGT  
 TGSSVSCTEEKQSKSQQLKKIFQEYGTGVSLHIGISLISLGIFYMVSSGVDMPAILLKLGFKESLVQ  
 SKMAAGTSTFVVAYAIHKLFVPVRISITLVSPLIVRYFRKVGFFKPPAAKP

TRTRPLE - GFP Tag - V

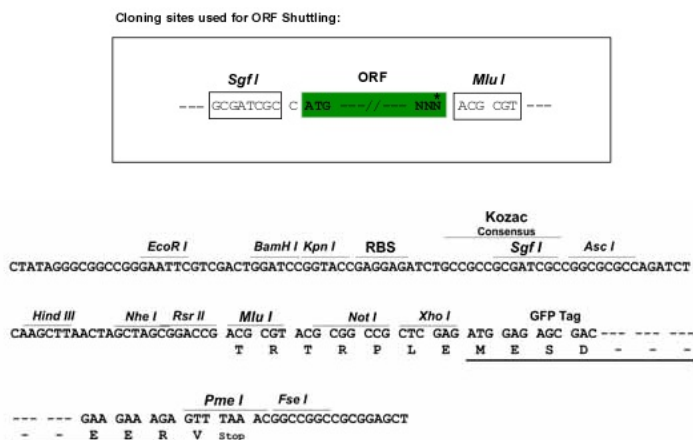
**Chromatograms:** [https://cdn.origene.com/chromatograms/ja2694\\_e05.zip](https://cdn.origene.com/chromatograms/ja2694_e05.zip)



View online »

Restriction Sites: Sgfl-MluI

### Cloning Scheme:



ACCN: NM 080821

ORF Size: 576 bp

**OTI Disclaimer:** Due to the inherent nature of this plasmid, standard methods to replicate additional amounts of DNA in E. coli are highly likely to result in mutations and/or rearrangements. Therefore, OriGene does not guarantee the capability to replicate this plasmid DNA. Additional amounts of DNA can be purchased from OriGene with batch-specific, full-sequence verification at a reduced cost. Please contact our customer care team at [custsupport@origene.com](mailto:custsupport@origene.com) or by calling 301.340.3188 option 3 for pricing and delivery.

The molecular sequence of this clone aligns with the gene accession number as a point of reference only. However, individual transcript sequences of the same gene can differ through naturally occurring variations (e.g. polymorphisms), each with its own valid existence. This clone is substantially in agreement with the reference, but a complete review of all prevailing variants is recommended prior to use. [More info](#)

**OTI Annotation:** This clone was engineered to express the complete ORF with an expression tag. Expression varies depending on the nature of the gene.

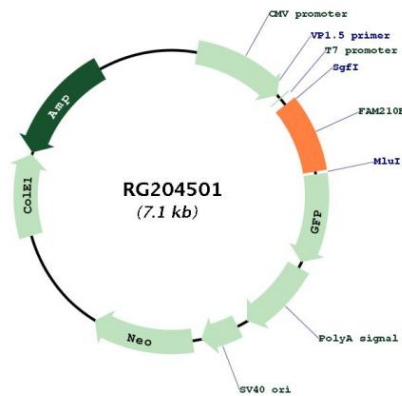
**Components:** The ORF clone is ion-exchange column purified and shipped in a 2D barcoded Matrix tube containing 10ug of transfection-ready, dried plasmid DNA (reconstitute with 100 ul of water).

**Reconstitution Method:**

1. Centrifuge at 5,000xg for 5min.
2. Carefully open the tube and add 100ul of sterile water to dissolve the DNA.
3. Close the tube and incubate for 10 minutes at room temperature.
4. Briefly vortex the tube and then do a quick spin (less than 5000xg) to concentrate the liquid at the bottom.
5. Store the suspended plasmid at -20°C. The DNA is stable for at least one year from date of shipping when stored at -20°C.

RefSeq:	<u>NM_080821.1, NP_543011.1</u>
RefSeq Size:	3026 bp
RefSeq ORF:	579 bp
Locus ID:	116151
UniProt ID:	<u>Q96KR6</u>
Cytogenetics:	20q13.2
Protein Families:	Transmembrane
Gene Summary:	Plays a role in erythroid differentiation (PubMed:26968549). Involved in cell proliferation and tumor cell growth suppression (PubMed:28594398). Involved in the metabolic reprogramming of cancer cells in a PDK4-dependent manner (PubMed:28594398).[UniProtKB/Swiss-Prot Function]

## Product images:



Circular map for RG204501