

Product datasheet for **RG204493**

IL11 (NM_000641) Human Tagged ORF Clone

Product data:

Product Type: Expression Plasmids
Product Name: IL11 (NM_000641) Human Tagged ORF Clone
Tag: TurboGFP
Symbol: IL11
Synonyms: AGIF; IL-11
Mammalian Cell Selection: Neomycin
Vector: pCMV6-AC-GFP (PS100010)
E. coli Selection: Ampicillin (100 ug/mL)
ORF Nucleotide Sequence: >RG204493 representing NM_000641
 Red=Cloning site Blue=ORF Green=Tags(s)

TTTTGTAATACGACTCACTATAGGGCGCCGGGAATTCGTCGACTGGATCCGGTACCGAGGAGATCTGCC
GCC**CGATCGCC**

ATGAAGTGTGTTGCGCCTGGTCTGGTCTGAGCCTGTGGCCAGATACAGCTGTCGCCCTGGGC
CACCACCTGGCCCCCTCGAGTTTCCCCAGACCCTCGGGCCGAGCTGGACAGCACCGTGTCTGACCCG
CTCTCTCTGGCGACACGCGGCAGCTGGCTGCACAGCTGAGGGACAAATCCCAGCTGACGGGGACCAC
AACCTGGATTCCCTGCCACCCTGGCCATGAGTGCGGGGCACTGGGAGCTCTACAGCTCCCAGGTGTGC
TGACAAGGCTGCGAGCGGACCTACTGTCTACCTGCGGCACGTGCAGTGGCTGCGCCGGGCAGGTGGCTC
TTCCCTGAAGACCCTGGAGCCCGAGCTGGGCACCCTGCAGGCCCGACTGGACCGGCTGCTGCGCCGGCTG
CAGCTCCTGATGTCCCGCTGGCCCTGCCCCAGCCACCCCGGACCCCGCGGGCGCCCCGCTGGCGCCCC
CCTCCTCAGCCTGGGGGGCATCAGGGCCGCCCTCGCCATCCTGGGGGGCTGCACCTGACACTTGACTG
GGCCGTGAGGGGACTGCTGCTGAAGACTCGGCTG

ACGCGTACGCGGCCGCTCGAG - GFP Tag - GTTTAA

Protein Sequence: >RG204493 representing NM_000641
 Red=Cloning site Green=Tags(s)

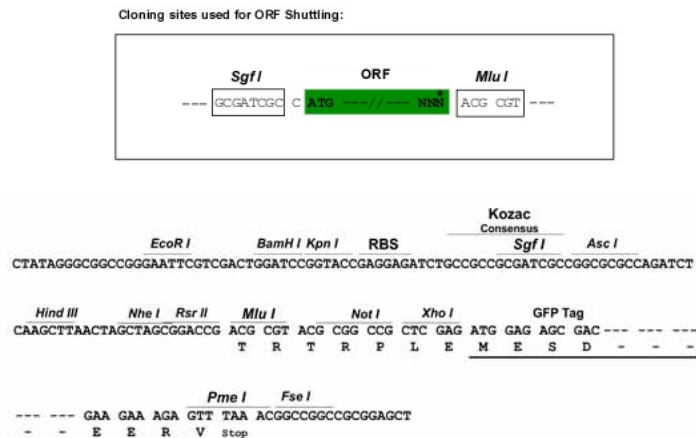
MNCVCRLVLVVLVSLWPDVAVAPGPPPPPPRVSPDPRAELDSTVLLTRSLADTRQLAAQLRDKFPADGDH
NLDLPTLAMSAGALGALQLPGVLRADLLSYLRHVQWLRAGGSSSLKTLPELGTQLARLDRLRLRL
QLLMSRLALPQPPDPPAPPLAPPSSAWGGIRAALAILGGLHLTLDWAVRGLLLKTRL

TRTRPLE - GFP Tag - V

Restriction Sites: Sgfl-MluI



[View online »](#)

Cloning Scheme:


ACCN: NM_000641

ORF Size: 597 bp

OTI Disclaimer: The molecular sequence of this clone aligns with the gene accession number as a point of reference only. However, individual transcript sequences of the same gene can differ through naturally occurring variations (e.g. polymorphisms), each with its own valid existence. This clone is substantially in agreement with the reference, but a complete review of all prevailing variants is recommended prior to use. [More info](#)

OTI Annotation: This clone was engineered to express the complete ORF with an expression tag. Expression varies depending on the nature of the gene.

Components: The ORF clone is ion-exchange column purified and shipped in a 2D barcoded Matrix tube containing 10ug of transfection-ready, dried plasmid DNA (reconstitute with 100 ul of water).

Reconstitution Method:

1. Centrifuge at 5,000xg for 5min.
2. Carefully open the tube and add 100ul of sterile water to dissolve the DNA.
3. Close the tube and incubate for 10 minutes at room temperature.
4. Briefly vortex the tube and then do a quick spin (less than 5000xg) to concentrate the liquid at the bottom.
5. Store the suspended plasmid at -20°C. The DNA is stable for at least one year from date of shipping when stored at -20°C.

RefSeq: [NM_000641.2](#), [NP_000632.1](#)

RefSeq Size: 2354 bp

RefSeq ORF: 600 bp

Locus ID: 3589

UniProt ID: [P20809](#)

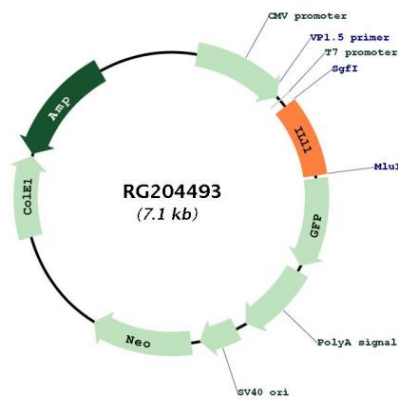
Cytogenetics: 19q13.42

Protein Families: Druggable Genome, Secreted Protein

Protein Pathways: Cytokine-cytokine receptor interaction, Hematopoietic cell lineage, Jak-STAT signaling pathway

Gene Summary: The protein encoded by this gene is a member of the gp130 family of cytokines. These cytokines drive the assembly of multisubunit receptor complexes, all of which contain at least one molecule of the transmembrane signaling receptor IL6ST (gp130). This cytokine is shown to stimulate the T-cell-dependent development of immunoglobulin-producing B cells. It is also found to support the proliferation of hematopoietic stem cells and megakaryocyte progenitor cells. Alternatively spliced transcript variants encoding distinct isoforms have been found for this gene. [provided by RefSeq, Jun 2012]

Product images:



Circular map for RG204493