

Product datasheet for **RG204420**

CHIC2 (NM_012110) Human Tagged ORF Clone

Product data:

Product Type: Expression Plasmids
Product Name: CHIC2 (NM_012110) Human Tagged ORF Clone
Tag: TurboGFP
Symbol: CHIC2
Synonyms: BTL
Mammalian Cell Selection: Neomycin
Vector: pCMV6-AC-GFP (PS100010)
E. coli Selection: Ampicillin (100 ug/mL)
ORF Nucleotide Sequence: >RG204420 representing NM_012110
 Red=Cloning site Blue=ORF Green=Tags(s)

TTTTGTAATACGACTCACTATAGGGCGGCCGGAATTCGTCGACTGGATCCGGTACCGAGGAGATCTGCC
 GCC**CGATCGCC**

ATGGCGGATTTTCGACGAAATCTATGAGGAAGAGGAGGACGAGGAGCGGGCCCTGGAGGAGCAGCTGCTCA
 AGTACTCGCCGGACCCGGTGGTCGTCGCGGCTCCGGTACGTCACCGTATTTGGACTGAGCAACAATT
 TGAATCTGAATCCCTTCTTCATTAAGTAAAGTAGCTCCTGAAGAATTTAAAGCCAGCATCAACAGA
 GTTAACAGTTGTCTTAAGAAGAACCTTCTGTTAATGTACGTTGGCTACTTTGTGGCTGCCTTTGTGCT
 GCTGCACATTAGTTGCAGTATGTGGCCAGTTATTTGCCTCAGTAAAAGAACACGAAGATCGATTGAGAA
 GTTATTAGAATGGGAAAACAATAGGTTATACCACAAGCTGTGCTTGCATTGGAGACTGAGCAAAAAGGAAA
 TGTGAAACGAATAACATGATGGAATATGTCATCCTCATAGAATTTTACCAAAGACCCGATTTTTCGAC
 CAGAT

ACGCGTACGCGGCCGCTCGAG - GFP Tag - GTTTAA

Protein Sequence: >RG204420 representing NM_012110
 Red=Cloning site Green=Tags(s)

MADFDEIYEEEEDEERALEEQLLKYSPDPVVVRGSGHVTVFGLSNKFESEFPSSLTGKVAPEEFKASINR
 VNSCLKKNLPVNRWLLCGCLCCCTLGCSMWPVICLSKRTRRSIEKLLLEWENNRLYHKLCLHWRLSKRK
 CETNNMEYVILIEFLPKTPIFRPD

TRTRPLE - GFP Tag - V

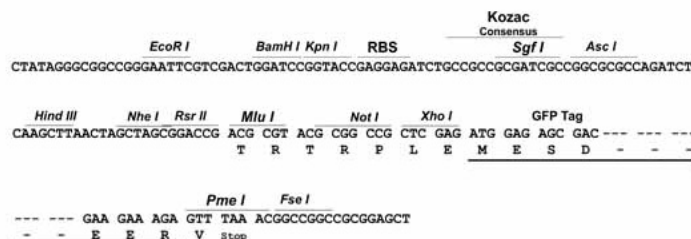
Restriction Sites: Sgfl-MluI



[View online »](#)

Cloning Scheme:

Cloning sites used for ORF Shutting:



ACCN: NM_012110
ORF Size: 495 bp
OTI Disclaimer: The molecular sequence of this clone aligns with the gene accession number as a point of reference only. However, individual transcript sequences of the same gene can differ through naturally occurring variations (e.g. polymorphisms), each with its own valid existence. This clone is substantially in agreement with the reference, but a complete review of all prevailing variants is recommended prior to use. [More info](#)
OTI Annotation: This clone was engineered to express the complete ORF with an expression tag. Expression varies depending on the nature of the gene.
Components: The ORF clone is ion-exchange column purified and shipped in a 2D barcoded Matrix tube containing 10ug of transfection-ready, dried plasmid DNA (reconstitute with 100 ul of water).
Reconstitution Method:

1. Centrifuge at 5,000xg for 5min.
2. Carefully open the tube and add 100ul of sterile water to dissolve the DNA.
3. Close the tube and incubate for 10 minutes at room temperature.
4. Briefly vortex the tube and then do a quick spin (less than 5000xg) to concentrate the liquid at the bottom.
5. Store the suspended plasmid at -20°C. The DNA is stable for at least one year from date of shipping when stored at -20°C.

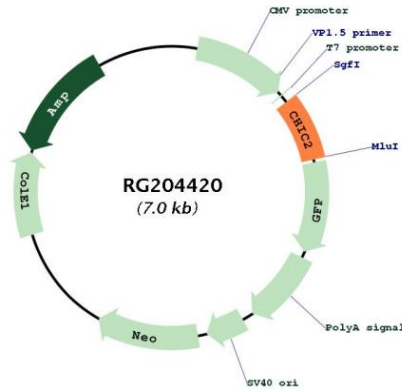
RefSeq: [NM_012110.4](#)
RefSeq Size: 1151 bp
RefSeq ORF: 498 bp
Locus ID: 26511
UniProt ID: [Q9UKJ5](#)

Cytogenetics: 4q12

Protein Families: Druggable Genome, Transmembrane

Gene Summary: This gene encodes a member of the CHIC family of proteins. The encoded protein contains a cysteine-rich hydrophobic (CHIC) motif, and is localized to vesicular structures and the plasma membrane. This gene is associated with some cases of acute myeloid leukemia. [provided by RefSeq, Jul 2008]

Product images:



Circular map for RG204420