

Product datasheet for **RG204409**

TMEM143 (NM_018273) Human Tagged ORF Clone

Product data:

Product Type:	Expression Plasmids
Product Name:	TMEM143 (NM_018273) Human Tagged ORF Clone
Tag:	TurboGFP
Symbol:	TMEM143
Mammalian Cell Selection:	Neomycin
Vector:	pCMV6-AC-GFP (PS100010)
E. coli Selection:	Ampicillin (100 ug/mL)
ORF Nucleotide Sequence:	>RG204409 representing NM_018273 Red=Cloning site Blue=ORF Green=Tags(s)

TTTTGTAATACGACTCACTATAGGGCGGCCGGAATTCGTCGACTGGATCCGGTACCGAGGAGATCTGCC
GCC**CGATCGCC**

ATGACAGTCGAGCTTTGGCTAAGGCTCCGGGAAAGGGTCTAGCCATGCTGCATGTGACCCGGGGGTCT
GGGGTCCAGGGTCCGAGTATGGCCACTGTTGCCCGCGCTCCTCGGGCCCCCGGGCCCTCATCGCT
GGCAGCAAAAATGGGGAGTATCGCAAGATGTGGAACCCAGGGAGCCCCGCGACTGGGCCAGCAGTAC
CGCGAGCGCTTCAATCCCTTCTCCAAGGAGCAGCTGCTCCGCCTCCTAATACAGGAATTCCTCGAGTC
CGGCAGAGAAGGGCGCTTTGGAGCGTTCTCGGCCACGTGGACTCTGCACCCTGTTCCACTACCACCA
AATCCTGGCCCGCTGCAGGCCTTATATGACCCCATCAACCTGACAGGGAGACCCTCGATCAGCCATCA
CTAACGGATCCCCAGCGTCTGTCTAATGAGCAGGAGGTGCTTCGGGCTCTGGAGCCCTGCTGGCCAGG
CCAACCTCTCCCCGCTGTCTGAGGACACCCTGGCCTACGCGCTGGTGGTCCACCACCCTCAGGATGAGGT
CCAGGTGACAGTAAATTTGGATCAGTATGTCTACATTCCTTCTGGGCCCTGGCCAGCGAGTCGGGCGAG
ATGCCCTGAAGTCCAGCGTGGGCTCCAGGCGTGGCTTCTTACCAAGCTGCCCTGCGGAGAGGAGAT
ACTTTAAGCGGTGGTCTGGCAGCCCGACCAACGGGGACACCTGGTACTGAAGATTTCAAGGACAC
GCCGCTGGAAGGCTGGAGCAGTCTGCCGAGCTGAAGGTGCGCACGCCACCCTGCAGCGGCCCTG
CTCAACCTCATGCTGGTAGTCTCCGGCGTGGCGATCTTCGTCAACGTGGGCATGGTGGTCTAACCGACC
TCAAGGTGGCCACCTCCCTGCTGCTGCTCTTCGCCATCTTATGGGCTGCGGGCCTCCAAGATGTT
CGGGCAGCGGCGCAGCGCAGGCGTGGAGCTGGCGCACATGCTGTACTATCGCAGTACGTCCAACAAC
TCGGAGCTGCTCAGCGCCTGGCCCTGCGCGCAGGACGAGCACACCAAGGAGGCGCTGCTGGCTCACA
GCTTCTGGCCCGGCGCCAGGGGGCACTCAAGGCTCGCCGAAGAGACCTCCAGGTGGCTCAGGTCCGA
GGTGGAGAAGTGGCTCTAGCCAAGTCAAGGCTGTGAGGTGACCTTCAACGGAACCTCGGGCCCTGGCGCAT
CTGCAGGCCCTGACCCCCAGCATGGGATGTACCCACCCCGGGTTTCCCAAACTAGACCCAGTGGCTC
CGATCACTTCCGAGCCCCGCAAGCCACGCCAGCAGTAAACATCTCC

ACGCGTACGCGGCCGCTCGAG - GFP Tag - GTTTAA



[View online »](#)

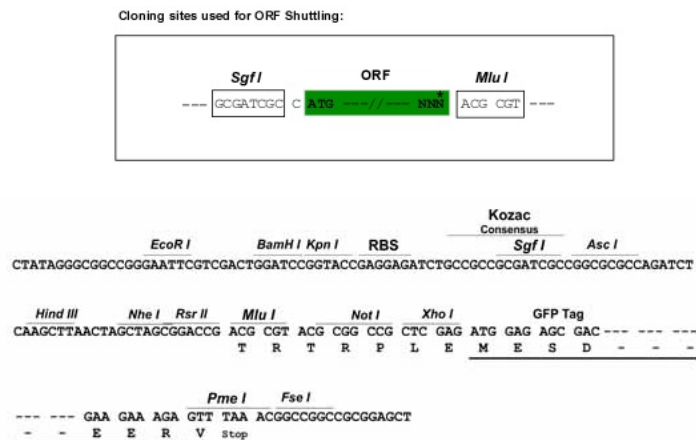
Protein Sequence: >RG204409 representing NM_018273
 Red=Cloning site Green=Tags(s)

MTVELWLRLRGKGLAMLHVTRGVWGSRVRVWPLLPALLGPPRALSSLAAKMGEYRKMWNPREPRDWAQQY
 RERFIPFSKEQLLRLLIQEFHSSPAEKAALAEAFSAHVDFCTLFHYHQILARLQALYDPINPDRETLDQPS
 LTDPQRLSNEQEVLRALEPLLAQANFSPLSEDTLAYALVVHHPQDEVQVTVNLQDQYVYIHFVALGQRVGG
 MPLKSSVGSRRGFFTKLPPAERRYFKRVVLAARTKRGHLVLKSFKDTPLGLEQLLPELKVRTPTLQRAL
 LNLMLVVSQVAIFVNVGMVVLTDLKVATSLLLLLFAIFMGLRASKMFGQRRSAQALELAHMLYYRSTSN
 SELLALALRAQDEHTKEALLAHSFLARRPGGTQGSPEETSRWLRSEVENWLLAKSGCEVTFNGTRALAH
 LQALTPSMGLYPPPQPKLDPVAPITSEPPQATPSSNIS

TRTRPLE – GFP Tag – V

Restriction Sites: SgfI-MluI

Cloning Scheme:



ACCN: NM_018273

ORF Size: 1377 bp

OTI Disclaimer: The molecular sequence of this clone aligns with the gene accession number as a point of reference only. However, individual transcript sequences of the same gene can differ through naturally occurring variations (e.g. polymorphisms), each with its own valid existence. This clone is substantially in agreement with the reference, but a complete review of all prevailing variants is recommended prior to use. [More info](#)

OTI Annotation: This clone was engineered to express the complete ORF with an expression tag. Expression varies depending on the nature of the gene.

Components: The ORF clone is ion-exchange column purified and shipped in a 2D barcoded Matrix tube containing 10ug of transfection-ready, dried plasmid DNA (reconstitute with 100 ul of water).

Reconstitution Method:

1. Centrifuge at 5,000xg for 5min.
2. Carefully open the tube and add 100ul of sterile water to dissolve the DNA.
3. Close the tube and incubate for 10 minutes at room temperature.
4. Briefly vortex the tube and then do a quick spin (less than 5000xg) to concentrate the liquid at the bottom.
5. Store the suspended plasmid at -20°C. The DNA is stable for at least one year from date of shipping when stored at -20°C.

RefSeq: [NM_018273.2](#), [NP_060743.2](#)

RefSeq Size: 2265 bp

RefSeq ORF: 1380 bp

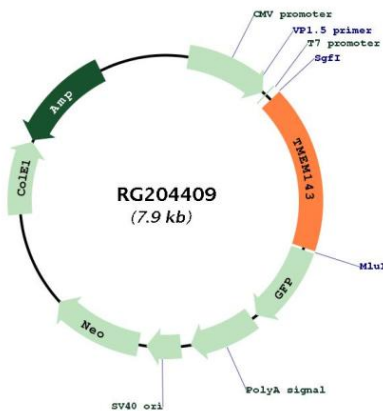
Locus ID: 55260

UniProt ID: [Q96AN5](#)

Cytogenetics: 19q13.33

Protein Families: Transmembrane

Product images:



Circular map for RG204409