

Product datasheet for **RG204398**

ZNF580 (NM_207115) Human Tagged ORF Clone

Product data:

Product Type: Expression Plasmids

Tag: TurboGFP

Symbol: ZNF580

Mammalian Cell Selection: Neomycin

Vector: pCMV6-AC-GFP (PS100010)

E. coli Selection: Ampicillin (100 ug/mL)

ORF Nucleotide Sequence: >RG204398 representing NM_207115
Red=Cloning site Blue=ORF Green=Tags(s)

TTTTGTAATACGACTCACTATAGGGCGGCCGGAATTCGTCGACTGGATCCGGTACCGAGGAGATCTGCC
GCCGCGATCGCC

ATGCTGCTGCTGCCGCCGCGGCCACCCACCTCGGTCTCTCTCCGGAGGCCATGGACCCACCGCCCC
CCAAGGCTCCCCCTTTCCCAAGGCGGAAGGCCCTCCTCACTCCTTCTCGCGGGCGGGCCCCGACC
CCCGCGGTGGGCCGCCACCTCCTCATCGACGCCAATGGGTCCCTACACATACACGGTGCAGCTGGAG
GAGGAGCCCCGGGGCCCCGCCAGCGCAGGCGCCCCAGGAGAGCCCGGCCCTCGCAAGGGCTACAGCT
GCCCGGAGTGCGCCCGTGTCTTTGCCAGCCCTTGCAGGCTGCAGAGCCACCGCGTGTGCACTCGGACCT
CAAGCCCTTACGTGCGGCGCTGCGGCAAGGCCTTCAAGCGCTCCAGCCACCTGTGCGGGCATCGCGCC
ACGCACCGCGCCCGCGGCCGCGCCGACACCTGCCGCTCTGTCCACGCCGCTTCCAGGACGCCGCGG
AGCTGGCGCAGCACGTGCGCTCCAC

ACGCGTACGCGGCCGCTCGAG - GFP Tag - GTTTAA

Protein Sequence: >RG204398 representing NM_207115
Red=Cloning site Green=Tags(s)

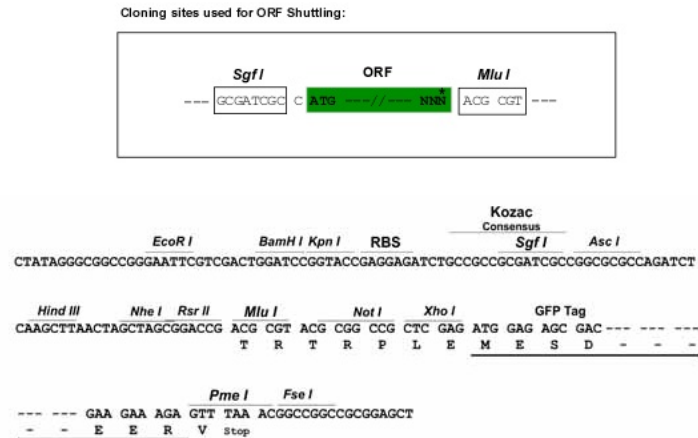
MLLLPPRPPHPRSSSPEAMDPPPPKAPPFKAEGPSSTPSSAAGPRPPRLGRHLLIDANGVPYTYTVQLE
EEPRGPPQREAPPGEPRKGYSCPECARVFASPLRLQSHRVSHSDLKPFTCGACGKAFAKRSSHLSRHR
THRARAGPPHTCPLCPRRFQDAELAQHVRHLH

TRTRPLE - GFP Tag - V

Restriction Sites: SgfI-MluI



Cloning Scheme:



ACCN: NM_207115

ORF Size: 516 bp

OTI Disclaimer: The molecular sequence of this clone aligns with the gene accession number as a point of reference only. However, individual transcript sequences of the same gene can differ through naturally occurring variations (e.g. polymorphisms), each with its own valid existence. This clone is substantially in agreement with the reference, but a complete review of all prevailing variants is recommended prior to use. [More info](#)

OTI Annotation: This clone was engineered to express the complete ORF with an expression tag. Expression varies depending on the nature of the gene.

Components: The ORF clone is ion-exchange column purified and shipped in a 2D barcoded Matrix tube containing 10ug of transfection-ready, dried plasmid DNA (reconstitute with 100 ul of water).

Reconstitution Method:

1. Centrifuge at 5,000xg for 5min.
2. Carefully open the tube and add 100ul of sterile water to dissolve the DNA.
3. Close the tube and incubate for 10 minutes at room temperature.
4. Briefly vortex the tube and then do a quick spin (less than 5000xg) to concentrate the liquid at the bottom.
5. Store the suspended plasmid at -20°C. The DNA is stable for at least one year from date of shipping when stored at -20°C.

Note: Plasmids are not sterile. For experiments where strict sterility is required, filtration with 0.22um filter is required.

RefSeq: NM_207115.1, NP_996998.1

RefSeq Size: 1152 bp

RefSeq ORF: 519 bp

Locus ID: 51157

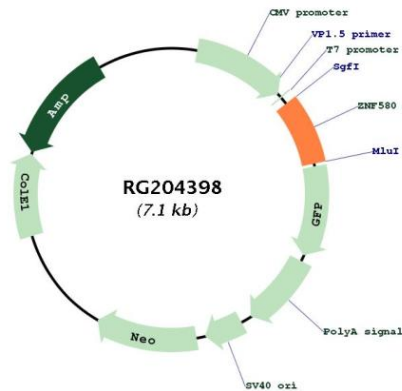
UniProt ID: Q9UK33

Cytogenetics: 19q13.42

Protein Families: Transcription Factors

Gene Summary: Involved in the regulation of endothelial cell proliferation and migration. Mediates H₂O₂-induced leukocyte chemotaxis by elevating interleukin-8 production and may play a role in inflammation. May be involved in transcriptional regulation.[UniProtKB/Swiss-Prot Function]

Product images:



Circular map for RG204398