

Product datasheet for **RG204397**

KIAA0859 (METTL13) (NM_014955) Human Tagged ORF Clone

Product data:

Product Type:	Expression Plasmids
Product Name:	KIAA0859 (METTL13) (NM_014955) Human Tagged ORF Clone
Tag:	TurboGFP
Symbol:	EEF1AKNMT
Synonyms:	5630401D24Rik; CGI-01; DFNB26; DFNB26M; DFNM1; feat; KIAA0859; METTL13
Mammalian Cell Selection:	Neomycin
Vector:	pCMV6-AC-GFP (PS100010)
E. coli Selection:	Ampicillin (100 ug/mL)



[View online »](#)

**ORF Nucleotide
Sequence:**

>RG204397 representing NM_014955
 Red=Cloning site Blue=ORF Green=Tags(s)

TTTTGTAATACGACTCACTATAGGGCGGCCGGAATTCGTCGACTGGATCCGGTACCGAGGAGATCTGCC
 GCC**GCGATCGCC**

ATGAACCTCTTACCTAAAAGTTCAGGGAGTTGGCTCCGTTGACTATTGGGAGAAGTTCTCCAGCAGC
 GAGGAAAAGAAAGCTTTCGAGTGGTATGGAACCTACCTGGAACGTGCGGGGTGCTACATAAATATATCAA
 GCCCAGGAAAAGGTGCTGGTGATTGGGTGGCAACTCAGAAGTGAAGGAAATGAATGCCACCC
 TATCGGGATATAGTGAACATCGACATCAGTGAGGTTGTCATCAAGCAAATGAAGGAAATGAATGCCACCC
 GACGGCCCGAGATGAGCTTCTTGAAGATGGACATGACGCAGATGGAGTTTCTGATGCCTCGTTCCAGGT
 GGTGTTGGACAAGGGCACCTGGATGCTGTCCTGACAGATGAGGAAGAGAAGACCTTACAACAGGTGGAC
 AGGATGCTGGCTGAGGTTGGCCGTCTGCAGGTGGCGGTGCTATCTCTGCATCTCCCTGGCTCAGG
 CTCACATCTGAAGAAAGCAGTGGCCACTTCTCCGGGAGGGGTGGATGGTGAAGGTGCACCAAGTGGC
 CAACAGCCAGGACCAGGTGTTGAAGCAGAGCCTCAGTTCTCCTTGCCTGTCTTTGCCTTCATCATGACC
 AAGTTACAGGCCAGTCCCTGGCTCTGCCCTTCAGATCTTTGAGCTGTGTGCTCAGGAGCAGCGCAAGCCTG
 TGGCGCTGGAGAGTGCCGAGCGGTGGCCGAGGCGGTGCAGGAGCGACAGCAGTATGCCTGGCTGTGCAG
 CCAGCTGCCCGCAAGGCCAGGCTGGGGAGTGTGTCTCTGGACTTGTGCGATGGGGACACGGGGAGCCA
 CGCTACACCTCCACGTGGTGGACAGCCCCACTGTGAAACCATCGCGGGACAATCATTTTGCATTTTCA
 TCATCCCTCAGGGCCGGGAGACCAGTGGCTCTTTGGCATGGATGAGGGCCGAAACAGCTGGCGGCCAG
 TGCTGGCTCAGGAGGTTGATTACAGTGGCCCTTACCGAGGTGAGCAGTATGAAAGCATGGACCACATC
 CAAGCTGAGCTGTCGGCTAGAGTCATGGAGCTGGCCCCAGCTGGGATGCCACCCAGCAGCAGGTCCCCT
 TTCTGTCTGTGGTGGGACATTGGGGTCCGGACCGTTCAGCACCAAGACTGCAGCCCCTTGAGCGGTGA
 CTATGTCATTGAGGATGTGCAAGGGGATGACAAGCGATACTTCCGTCGACTGATCTTCTCAGCAACAGG
 AATGTGGTGCAGTCCGAAGCCAGGTTGCTGAAGGATGTGTCTCACAAAGCCAGAAGAAGCGGAAAAAGG
 ACAGGAAGAAGCAGCGGCTGCTGATGCGGAGGACCTCCCTGCAGCCCCGGGGCAGTCCATTGATAAGAG
 TTACCTGTGTTGTGAACACCACAAGCCATGATCGCTGGCCTTGCCTGCTGAGAAACCCAGAGCTACTC
 CTAGAGATCCCCTGGCATTGTTGGTGGTAGGCCCTGGCGGGGGCAGCCTCCCCCTTTTGTCCACGATC
 ATTTTCAAAGTCTGCATTGATGCTGTGGAGATCGATCCCTCCATGTTGGAAGTGGCCACCCAGTGGTT
 TGGCTTCTCCAGAGTGACCGAATGAAGGTCCACATTGCAGATGGCCTGGACTATATCGCCAGCTTGGCA
 GGAGGAGGAGAAGCACGGCCTTGTACGATGTCATAATGTTTGTGTTGACAGTAAGGACCAACACTGG
 GAATGAGTTGTCGCCCCAGCATTGTTGGAGCAATCTTTTCTACAGAAGGTTAAAAGCATCTTGACTCC
 TGAAGGTGTTTTTATTCTCAACCTGTGTGCCGAGACTTGGGGCTAAAAGACTCAGTGCTGGCTGGGCTC
 AAGGCAGTGTCCCCCTCCTATATGTCCGGCAATTGAGGGTGAAGTGAATGAGATCCTGTTCTGTGACG
 TGCACCTGAGCAAAAACCTTGCCACACCAGAGCTCCTAGAAAACAGCCAGGCTTTGGAGCGGACCCTGAG
 GAAGCCTGGGAGGGGTTGGGATGACACGTATGTCTGTGATGATGCTCAAGACGGTGAAAATTGTG

ACGCGTACGCGGCCGCTCGAG - GFP Tag - GTTTAA

Protein Sequence: >RG204397 representing NM_014955
 Red=Cloning site Green=Tags(s)

MNLLPKSSREFGSDVYWEKFFQQRGKKA FEWYGTYLELCGVLHKYIKPREKVLVIGCGNSELSEQLYDVG
 YRDIVNIDISEVVIKQMKECNATRRPQMSFLKMDMTQMEFPDASFQVVLDKGTLDAVLTDEEEKTLQQVD
 RMLAEVGRVLQVGGRYLCISLAQAHILKKAVGHFSREGWMVRVHQVANSQDQVLEAEPQFSLPVFAFIMT
 KFRPVPGSALQIFELCAQEQRKPVRLSAERLAEAVQERQQYAWLCSQLRRKARLGSVSLDLCDGDTGEP
 RYTLHVVDSP TVKPSRDNHFAIFIIPQGRETEWLF GMDEGRKQLAASAGFRRLITVALHRGQQYESMDHI
 QAELSARVMELAPAGMPTQQQVPFLSVGGDIGVRTVQHQCSP LSGDYVIEDVQGD DKRYFRRLIFLSNR
 NVVQSEARLLKDVSHKAQKRKKDRKKQRPADAEDLPAAPGQSIDKSYLCCEHHKAMIAGLALLRNPELL
 LEIPLALLVVGLGGSLPLFVHDHFPKSCIDAVEIDPSMLEVATQWFGFSQSDRMKVHIADGLDYIASLA
 GGGEARPCYDVMFVDVSKDPTLGMSCPPPAFVEQSFLQVKSI LTPGEVFI LNLVCRDLGLKDSVLAGL
 KAVFPLL YVRIEGEVNEILFCQLHPEQKLATPELLETAQALERTLRKPGRGWDDTYVLS DMLKTVKIV

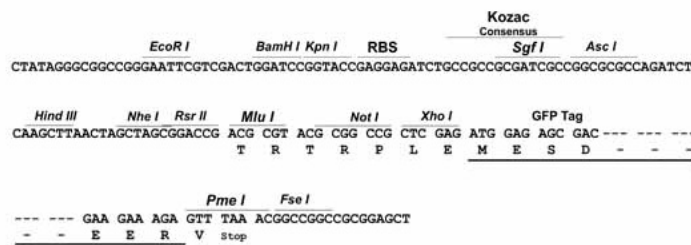
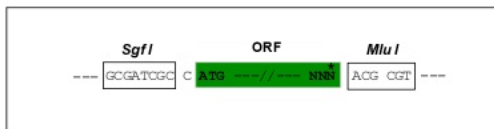
TRTRPLE – GFP Tag – V

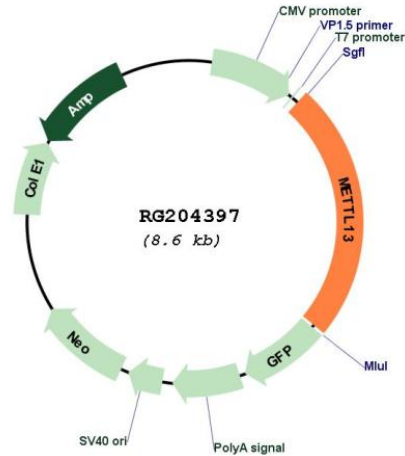
Restriction Sites:

SgfI-MluI

Cloning Scheme:

Cloning sites used for ORF Shuttling:



Plasmid Map:


ACCN: NM_014955

ORF Size: 2100 bp

OTI Disclaimer: The molecular sequence of this clone aligns with the gene accession number as a point of reference only. However, individual transcript sequences of the same gene can differ through naturally occurring variations (e.g. polymorphisms), each with its own valid existence. This clone is substantially in agreement with the reference, but a complete review of all prevailing variants is recommended prior to use. [More info](#)

OTI Annotation: This clone was engineered to express the complete ORF with an expression tag. Expression varies depending on the nature of the gene.

Components: The ORF clone is ion-exchange column purified and shipped in a 2D barcoded Matrix tube containing 10ug of transfection-ready, dried plasmid DNA (reconstitute with 100 ul of water).

Reconstitution Method:

1. Centrifuge at 5,000xg for 5min.
2. Carefully open the tube and add 100ul of sterile water to dissolve the DNA.
3. Close the tube and incubate for 10 minutes at room temperature.
4. Briefly vortex the tube and then do a quick spin (less than 5000xg) to concentrate the liquid at the bottom.
5. Store the suspended plasmid at -20°C. The DNA is stable for at least one year from date of shipping when stored at -20°C.

RefSeq: [NM_014955.2](#), [NP_055770.1](#)

RefSeq Size: 3096 bp

RefSeq ORF:	1842 bp
Locus ID:	51603
UniProt ID:	<u>Q8N6R0</u>
Cytogenetics:	1q24.3
Protein Families:	Druggable Genome
Gene Summary:	Dual methyltransferase that catalyzes methylation of elongation factor 1-alpha (EEF1A1 and EEF1A2) at two different positions, and is therefore involved in the regulation of mRNA translation (PubMed:30612740, PubMed:30143613). Via its C-terminus, methylates EEF1A1 and EEF1A2 at the N-terminal residue 'Gly-2' (PubMed:30143613). Via its N-terminus dimethylates EEF1A1 and EEF1A2 at residue 'Lys-55' (PubMed:30612740, PubMed:30143613). Has no activity towards core histones H2A, H2B, H3 and H4 (PubMed:30612740). [UniProtKB/Swiss-Prot Function]