

## Product datasheet for **RG204383**

### ZDHHC11 (NM\_024786) Human Tagged ORF Clone

#### Product data:

Product Type:	Expression Plasmids
Product Name:	ZDHHC11 (NM_024786) Human Tagged ORF Clone
Tag:	TurboGFP
Symbol:	ZDHHC11
Synonyms:	ZNF399
Mammalian Cell Selection:	Neomycin
Vector:	pCMV6-AC-GFP (PS100010)
E. coli Selection:	Ampicillin (100 ug/mL)
ORF Nucleotide Sequence:	>RG204383 representing NM_024786 Red=Cloning site Blue=ORF Green=Tags(s)

TTTTGTAATACGACTCACTATAGGGCGGCCGGAATTCGTCGACTGGATCCGGTACCGAGGAGATCTGCC  
GCC**CGATCGCC**

ATGGACACCCGCTCCGGGAGCCAGTGTTCCGTCACCCAGAAGCCATACTCAATAATGAAAAGCTGGTCT  
TGCCGCCCCGCATCTCCAGAGTGAACGGCTGGTCGTTACCCCTGCACTACTTCCAGGTGGTGACCTGGGC  
TGTCTTCGTGGGCCTTCTCGGCCACCTTCGGGATCTTCATTCCCTTCTGCCTCACGCGTGAAATAC  
ATTGCCTACGTGGTGACCGGGGGATCTTCTCGTTCACCTCGTCCACCTGATCGCGTCTGCATCG  
ACCCGGCCGACTCCAATGTCAGACTCATGAAGAACTATTCTCAGCCCATGCCCTCTTCGACAGATCAAA  
ACATGCACACGTGATCCAGAATCAGTTCTGCCACCTGTGCAAGGTACCCTGAACAAGAAAACCAACAC  
TGCATTTCTGCAATAAGTGTGTGTCGGCTTCGACCACCACTGCAATGGATCAACAACCTGCGTGGGAA  
GCCGGAATTATTGGTTCTTTCAGCACTGTGGCTCGGCCACAGCTGGCATGCTCTGCCTGATCGCCAT  
CCTGCTGTATGTCCTCGTCCAGTACCTCGTGAACCCCGGGGTGCTCCGCACGGACCCAGGTATGAAGAT  
GTCAAGAATATGAACACGTGGTGTCTTCTCCCTGTTCCCGGTGCAGGTGCAGACCCTGATAGTGC  
TGATCATCGGGATGCTCGTGTCTCTGCTGGACTTCTTGGCTTGGTGCACCTGGGCCAGCTGCTCATCTT  
CCACATCTACCTGAAGGCCAAGAAGATGACCACCTTTGAGTATCTCATTAAATAACCGCAAAGAAGAGAT  
TCAAAACATCAAGCAGTGAGGAAAGATCCATACGTGCAATGGACAAAGGAGTTCTCCAGCAAGGAGCTG  
GGCCCTGGGCTCATCTGCACAGGGAGTCAAAGCCAAGAGCTCCCTGCTGATTCAAGCACTTATGTCA  
CTTCTGCACTTCACTAAACCAGGATGGGGATTCGACGGCACGGGAAGGGGATGAAGACCCGTGTCCATCT  
GCACTTGGAGCCAAGGCCAGGAACCTCCCGCTGATTTGCAGGCGCCTGTGTCACTTCTCCACTCGTGTAC  
ACCCAGACGGGGCTCGATGGCACAGGAAGCAGATGATGCCCCGAGTATATCTACACTTGGGCTGCAACA  
AGAAACAACAGAGCCCATGAAAACCTGACAGTGTGAAAGTGAAGAC

AGCGGACCGACGCGTACGCGGCCGCTCGAG - GFP Tag - GTTTAA



[View online »](#)

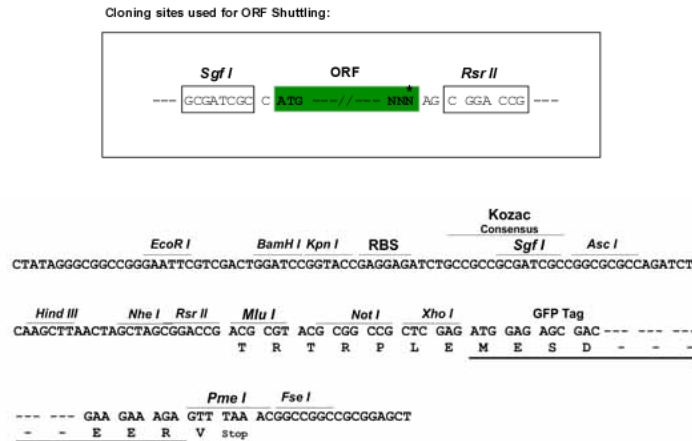
**Protein Sequence:** >RG204383 representing NM\_024786  
 Red=Cloning site Green=Tags(s)

MDTRSGSQCSVTPEAILNNEKLVLPPIRSRVNGWSLPLHYFQVVTWAVFVGLSSATFGIFIPFLPHAWKY  
 IAYVVTGGIFSFLVHLLIASCIDPADSNVRLMKNYSQPMPLFDRSKHAHVIQNQFCHLCKVTVNKKTKH  
 CISCNKCVSGFDHHCWINNCVGSRYWFFSTVASATAGMLCLIAILLVYL VQYLVNPGVLRTPRYED  
 VKNMNTWLLFLPLFPVQVQTLIVVIGMLVLLDGLVHLGQLLIFHIYKAKKMTTFEYLINNRKEES  
 SKHQAVRKDPYVQMDKGVLQQGAGALGSSAQGVKAKSSLLIHKHLCHFCTSVNQDGDSTAREGDEDP  
 ALGAKARNRSLICRRLCQFSTRVHPDGGSMQAQADDAPSI STLGLQQETTEPMKTD SAESED

SGP TRRRLE - GFP Tag - V

**Restriction Sites:** SgfI-RsrII

**Cloning Scheme:**



**ACCN:** NM\_024786

**ORF Size:** 1236 bp

**OTI Disclaimer:** The molecular sequence of this clone aligns with the gene accession number as a point of reference only. However, individual transcript sequences of the same gene can differ through naturally occurring variations (e.g. polymorphisms), each with its own valid existence. This clone is substantially in agreement with the reference, but a complete review of all prevailing variants is recommended prior to use. [More info](#)

**OTI Annotation:** This clone was engineered to express the complete ORF with an expression tag. Expression varies depending on the nature of the gene.

**Components:** The ORF clone is ion-exchange column purified and shipped in a 2D barcoded Matrix tube containing 10ug of transfection-ready, dried plasmid DNA (reconstitute with 100 ul of water).

**Reconstitution Method:**

1. Centrifuge at 5,000xg for 5min.
2. Carefully open the tube and add 100ul of sterile water to dissolve the DNA.
3. Close the tube and incubate for 10 minutes at room temperature.
4. Briefly vortex the tube and then do a quick spin (less than 5000xg) to concentrate the liquid at the bottom.
5. Store the suspended plasmid at -20°C. The DNA is stable for at least one year from date of shipping when stored at -20°C.

**RefSeq:** [NM\\_024786.2](#)

**RefSeq Size:** 2623 bp

**RefSeq ORF:** 1239 bp

**Locus ID:** 79844

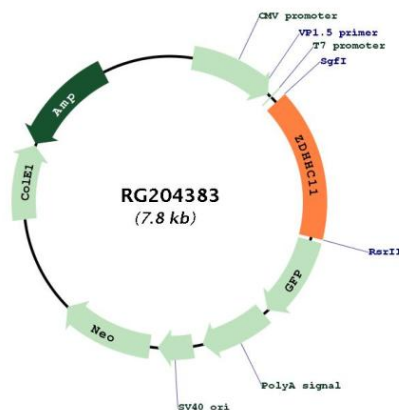
**UniProt ID:** [Q9H8X9](#)

**Cytogenetics:** 5p15.33

**Protein Families:** Transmembrane

**Gene Summary:** Endoplasmic reticulum-localized palmitoyltransferase that could catalyze the addition of palmitate onto various protein substrates and be involved in a variety of cellular processes (By similarity). Has a palmitoyltransferase activity toward NCDN and regulates NCDN association with endosome membranes through this palmitoylation (By similarity). May play a role in cell proliferation (PubMed:28331227).[UniProtKB/Swiss-Prot Function]

### Product images:



Circular map for RG204383