

Product datasheet for **RG204348**

CTHRC1 (NM_138455) Human Tagged ORF Clone

Product data:

Product Type: Expression Plasmids
Product Name: CTHRC1 (NM_138455) Human Tagged ORF Clone
Tag: TurboGFP
Symbol: CTHRC1
Mammalian Cell Selection: Neomycin
Vector: pCMV6-AC-GFP (PS100010)
E. coli Selection: Ampicillin (100 ug/mL)
ORF Nucleotide Sequence: >RG204348 representing NM_138455
 Red=Cloning site Blue=ORF Green=Tags(s)

TTTTGTAATACGACTCACTATAGGGCGGCCGGAATTCGTCGACTGGATCCGGTACCGAGGAGATCTGCC
 GCC**CGATCGCC**

ATGCGACCCAGGGCCCCGCCGCTCCCCGACGGCTCCGCGGCTCCTGCTGCTCCTGCTGCTGCAGC
 TGCCCGCGCCGTCGAGCGCCTCTGAGATCCCAAGGGGAAGCAAAGGCGCAGCTCCGGCAGAGGGAGGT
 GGTGGACCTGTATAATGGAATGTGCTTACAAGGGCCAGCAGGAGTGCCTGGTTCGAGACGGGAGCCCTGGG
 GCCAATGGCATTCCGGGTACACCTGGGATCCCAGGTCGGGATGGATTCAAAGGAGAAAAGGGGAATGTC
 TGAGGAAAGCTTTGAGGAGTCTGGACACCACTACAAGCAGGTTCATGGAGTTCATTTGAATTATGG
 CATAGATCTTGGGAAAATTGCGGAGTGTACATTTACAAAGATGCGTTCAAATAGTGCTCTAAGAGTTTTG
 TTCAGTGGCTCACTTCGGCTAAAATGCAGAAATGCATGCTGTCAGCGTTGGTATTTACATTCAATGGAG
 CTGAATGTTTCAGGACCTTTCCATTGAAGCTATAATTTATTTGGACCAAGGAAGCCCTGAAATGAATTC
 AACAAATTAATTCATCGCACTTCTTCTGTGGAAGGACTTTGTGAAGGAATTGGTCTGGATTAGTGGAT
 GTTGCTATCTGGGTTGGCACTTGTTCAGATTACCCAAAAGGAGATGCTTCTACTGGATGGAATTCAGTTT
 CTCGCATCATTATTGAAGAACTACCAAAA

ACGCGTACGCGGCCGCTCGAG - GFP Tag - GTTTAA

Protein Sequence: >RG204348 representing NM_138455
 Red=Cloning site Green=Tags(s)

MRPQGPAASPQRLRGLLLLLLQLPAPSSASEIPKGGKQKAQLRQREVVDLYNGMCLQGPAGVPRDGSPPG
 ANGIPGTPGIPGRDGFKEKGECLRESFEESWTPNYKQCSWSSLNYGIDLKIAECTFTKMRNSALRVL
 FSGSLRLKRNACCQRWYFTFNGAECSPPLPIEAIYLDQGSPEMNSTINIHRTSSVEGLCEGIGAGLVD
 VAIWVGTCSDYPKGDASTGWNSVSRIIEELPK

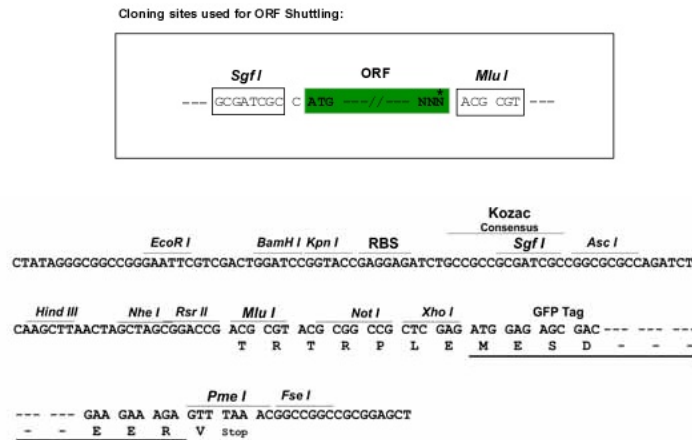
TRTRPLE - GFP Tag - V



[View online »](#)

Restriction Sites: SgfI-MluI

Cloning Scheme:



ACCN: NM_138455

ORF Size: 729 bp

OTI Disclaimer: The molecular sequence of this clone aligns with the gene accession number as a point of reference only. However, individual transcript sequences of the same gene can differ through naturally occurring variations (e.g. polymorphisms), each with its own valid existence. This clone is substantially in agreement with the reference, but a complete review of all prevailing variants is recommended prior to use. [More info](#)

OTI Annotation: This clone was engineered to express the complete ORF with an expression tag. Expression varies depending on the nature of the gene.

Components: The ORF clone is ion-exchange column purified and shipped in a 2D barcoded Matrix tube containing 10ug of transfection-ready, dried plasmid DNA (reconstitute with 100 ul of water).

Reconstitution Method:

1. Centrifuge at 5,000xg for 5min.
2. Carefully open the tube and add 100ul of sterile water to dissolve the DNA.
3. Close the tube and incubate for 10 minutes at room temperature.
4. Briefly vortex the tube and then do a quick spin (less than 5000xg) to concentrate the liquid at the bottom.
5. Store the suspended plasmid at -20°C. The DNA is stable for at least one year from date of shipping when stored at -20°C.

RefSeq: [NM_138455.2](#), [NP_612464.1](#)

RefSeq Size: 1236 bp

RefSeq ORF: 732 bp

Locus ID: 115908

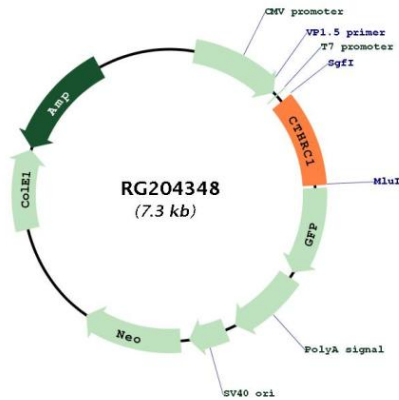
UniProt ID: [Q96CG8](#)

Cytogenetics: 8q22.3

Protein Families: Secreted Protein

Gene Summary: This locus encodes a protein that may play a role in the cellular response to arterial injury through involvement in vascular remodeling. Mutations at this locus have been associated with Barrett esophagus and esophageal adenocarcinoma. Alternatively spliced transcript variants have been described. [provided by RefSeq, Jan 2012]

Product images:



Circular map for RG204348