

Product datasheet for **RG204333**

UPF3A (NM_080687) Human Tagged ORF Clone

Product data:

Product Type:	Expression Plasmids
Product Name:	UPF3A (NM_080687) Human Tagged ORF Clone
Tag:	TurboGFP
Symbol:	UPF3A
Synonyms:	HUPF3A; RENT3A; UPF3
Mammalian Cell Selection:	Neomycin
Vector:	pCMV6-AC-GFP (PS100010)
E. coli Selection:	Ampicillin (100 ug/mL)
ORF Nucleotide Sequence:	>RG204333 representing NM_080687 Red=Cloning site Blue=ORF Green=Tags(s)

TTTGTAAATACGACTCACTATAGGGCGGCCGGAATTCGTCGACTGGATCCGGTACCGAGGAGATCTGCC
 GCC**CGATCGCC**

ATGCGCTCGGAAAAGGAGGGGGCCGGAGGCCTTCGGGCGGCCGTTGCCGCGGGGCCGAGCGGGAGGG
 AGAAGCTGTCGGCCCTAGAAGTGCAGTTCCACCGCGACTCGCAGCAGCAGGAGGCTGAGACGCCGCAAC
 TTCGTCTCCGGTTGCGGGGGCGGTGCGGGCAAACCTCGCAGGAGAAGAGGACGGCCCTGAGCAAGGTG
 GTCATCCGCCGCCTGCCTCCGGGCTACCAAGGAGCAGCTGGAGGAGCAGCTGCGCCCGCTGCCAGCAC
 ACGACTACTTCGAGTTCTTCGCCGCCGACCTGAGTCTTTATCCTCATCTCTACTCAAGAGCATACATTAA
 TTTTAGGAATCCTGATGACATCCTTCTTTTAGAGATCGTTTTGATGGATATATCTTCTTGACAGCAAA
 GATCCAGAATATAAGAAGTTTTAGAAACCTACTGTGTGGAGGAAGAGAAGACCAGTGCCAACCTGAGA
 CTCTGCTGGGGGAGATGGAGGCGAAGACAAGAGAGCTCATTGCTAGAAGAACCACACCTCTTTTGAATA
 TATTAATAATAGAAAATTAGAAAAGCAGAGAATTCGAGAAGAGAAGCGAGAAGAACGGAGGAGGAGAGAG
 TTAGAAAAGAAACGTTTTCGGGAAGAGGAAAAAGAAGAAGAAGAAGAAAGATGCAAAAAAAGAG
 AGACAGATAAACAGAAGAAATTCAGAGAAAGAAGTAAGGATTAAGCTTCTTAAGAAACCAGAAAAGGG
 AGAGGAACCAACCACAGAGAAACCAAAAGAAAGAGGAGAGGAGATTGATACTGGAGGTGGCAAGCAGGAA
 TCCTGTGCCCGCGTGCAGTCGTAAAAGCCAGGCCCATGGAAGGCTCGCTGGAGGAGCCCCAGGAGACGT
 CACACAGCGGCAGTGATAAAGAGCACAGGGATGTGGAGAGATCTCAAGAACAAGAATCTGAAGCACAAAG
 ATACCATGTGGATGACGCGAGGAGGCACAGAGCTCACCACGAGCCTGAACGGCTTTCCAGAAGGAGTGAG
 GATGAGCAGAGATGGGGAAAGGACCTGGCCAAGACAGAGGGAAGAAGGGGAGCCAGGACAGCGGGGCTC
 CGGGGAGGCCATGGAGAGACTGGAAGAGCGCAGAGGTGTGACGACAGTCCAGCACCCAGAAAAGAGCG
 ACTGGCAAACAAGGACCGGCCAGCCTTGACAGTGTATGATCCAGGAGCTCGCTCCGAGCGCAGAGTGT
 GGCGGAAACAGGAGGATCTGCAAGGCAGAAGGTTGGGGACTGGTCTGAGAAGAGGGAAGAGGCAGAG

ACGCGTACGCGGCCGCTCGAG - GFP Tag - GTTTAA



[View online »](#)

Protein Sequence: >RG204333 representing NM_080687
 Red=Cloning site Green=Tags(s)

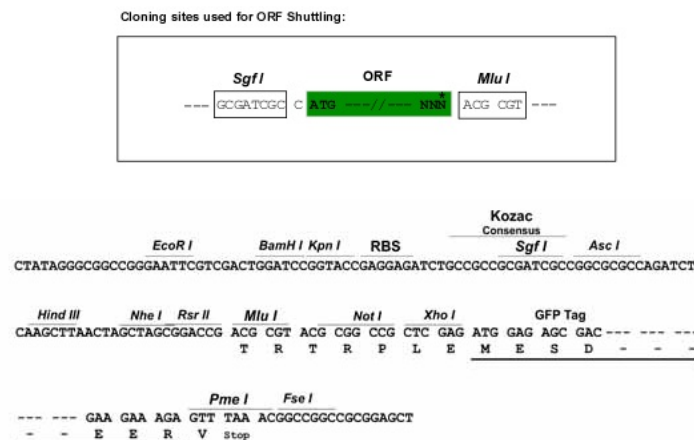
MRSEKEGAGGLRAAVAARGPSGREKLSALEVQFHRDSQQQEAETPPTSSSGCGGGAGKPREEKRTALSKV
 VIRRLPPGLTKEQLEELRPLPAHDYFEFFAADLSLYPHLYSRAYINFRNPDDILLFRDRFDGYIFLDSK
 DPEYKKFLETYCVEEETSANPETLLGEMAKTRELIARRTPPLEYIKNRKLEKQRIREEKREERRRRE
 LEKKRLREEEKRRRREERCKKKETDKQKIAEKEVRIKLLKKPEKGEEPTTEKPKERGEEDTGGGKQE
 SCAPGAVVKARPMESLEEPQETSHSGSDKEHRDVERSQQESEAQRYHVDGRRHRAHHEPERLSRRSE
 DEQRWGKGPQDRGKKSQDSGAPGEAMERLGRAQRCDDSPAPRKERLANKDRPALQLYDPGARFRAREC
 GGNRRICKAEGSGTGPEKREEAE

TRTRPLE – GFP Tag – V

Restriction Sites:

SgfI-MluI

Cloning Scheme:



ACCN: NM_080687

ORF Size: 1329 bp

OTI Disclaimer: The molecular sequence of this clone aligns with the gene accession number as a point of reference only. However, individual transcript sequences of the same gene can differ through naturally occurring variations (e.g. polymorphisms), each with its own valid existence. This clone is substantially in agreement with the reference, but a complete review of all prevailing variants is recommended prior to use. [More info](#)

OTI Annotation: This clone was engineered to express the complete ORF with an expression tag. Expression varies depending on the nature of the gene.

Components: The ORF clone is ion-exchange column purified and shipped in a 2D barcoded Matrix tube containing 10ug of transfection-ready, dried plasmid DNA (reconstitute with 100 ul of water).

Reconstitution Method:

1. Centrifuge at 5,000xg for 5min.
2. Carefully open the tube and add 100ul of sterile water to dissolve the DNA.
3. Close the tube and incubate for 10 minutes at room temperature.
4. Briefly vortex the tube and then do a quick spin (less than 5000xg) to concentrate the liquid at the bottom.
5. Store the suspended plasmid at -20°C. The DNA is stable for at least one year from date of shipping when stored at -20°C.

RefSeq: [NM_080687.3](#)

RefSeq Size: 2282 bp

RefSeq ORF: 1332 bp

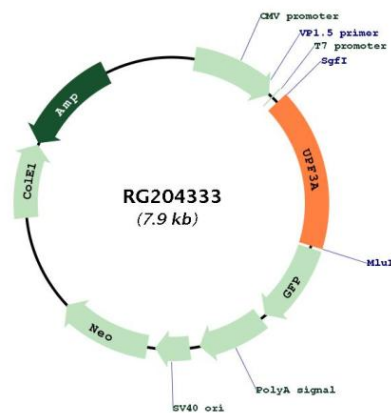
Locus ID: 65110

UniProt ID: [Q9H1J1](#)

Cytogenetics: 13q34

Gene Summary: This gene encodes a protein that is part of a post-splicing multiprotein complex involved in both mRNA nuclear export and mRNA surveillance. The encoded protein is one of two functional homologs to yeast Upf3p. mRNA surveillance detects exported mRNAs with truncated open reading frames and initiates nonsense-mediated mRNA decay (NMD). When translation ends upstream from the last exon-exon junction, this triggers NMD to degrade mRNAs containing premature stop codons. This protein binds to the mRNA and remains bound after nuclear export, acting as a nucleocytoplasmic shuttling protein. It forms with Y14 a complex that binds specifically 20 nt upstream of exon-exon junctions. This gene is located on the long arm of chromosome 13. Several splice variants encoding different isoforms have been found for this gene. [provided by RefSeq, Jul 2017]

Product images:



Circular map for RG204333