

## Product datasheet for **RG204317**

### **GLUT8 (SLC2A8) (NM\_014580) Human Tagged ORF Clone**

#### **Product data:**

Product Type:	Expression Plasmids
Product Name:	GLUT8 (SLC2A8) (NM_014580) Human Tagged ORF Clone
Tag:	TurboGFP
Symbol:	GLUT8
Synonyms:	GLUT8; GLUTX1
Mammalian Cell Selection:	Neomycin
Vector:	pCMV6-AC-GFP (PS100010)
E. coli Selection:	Ampicillin (100 ug/mL)



[View online »](#)

**ORF Nucleotide Sequence:**

>RG204317 representing NM\_014580  
 Red=Cloning site Blue=ORF Green=Tags(s)

TTTTGTAATACGACTCACTATAGGGCGGCCGGGAATTCGTCGACTGGATCCGGTACCGAGGAGATCTGCC  
 GCC**CGGATCGCC**

ATGACGCCCGAGGACCCAGAGGAAACCCAGCCGCTTCTGGGGCCTCTGGCGGCAGCGCCCGCGGCC  
 GCCGCGTCTTCTCGCCGCTTCGCCGCTGCCCTGGGCCACTCAGCTTCGGCTTCGCGCTCGGCTACAG  
 CTCGCCGGCCATCCCTAGCCTGCAGCGCCCGCCCGCCCGCCCGCCGCTGGACGACGCCCGCCCTCC  
 TGGTTCGGGGCTGTCGTGACCCTGGGTGCCGCGCGGGGGAGTCTGGCGGCTGGCTGGTGGACCGCG  
 CCGGGCGCAAGCTGAGCCTTTGCTGTGCTCCGTGCCCTTCGTGGCCGGCTTTGCCGTATCACCCGCGC  
 CCAGGACGTGTGGATGCTGCTGGGGGGCCCTCCTACCGCCCTGGCCTGCGGTGTTGCCTCCCTAGTG  
 GCCCGGTCTACATCTCCGAAATCGCTACCCAGCAGTCCGGGGTTGCTCGGCTCCTGTGTGCAGTAA  
 TGGTCGTGTCGGCATCCTCCTGGCCTACCTGGCAGGCTGGGTGCTGGAGTGGCGCTGGCTGGCTGTGCT  
 GGGCTGCGTGCCCCCTCCCTCATGCTGCTTCTCATGTGCTTCATGCCCGAGACCCCGCGCTTCCTGCTG  
 ACTCAGCACAGGCGCCAGGAGGCCATGGCCGCCCTGCGGTTCTGTGGGGCTCCGAGCAGGGCTGGGAAG  
 ACCCCCCCATCGGGGCTGAGCAGAGCTTTCACCTGGCCCTGCTGCGGCAGCCCGGCATCTACAAGCCCTT  
 CATCATCGGCGTCTCCCTGATGGCCTTCCAGCAGCTGTCGGGGGTCAACGCCGTATGTTCTATGCAGAG  
 ACCATCTTTGAAGAGGCCAAGTTCAAGGACAGCAGCCTGGCCTCGGTGCTGCTGGGTGTCATCCAGGTGC  
 TGTTACAGCTGTGGCGGCTCTCATCATGGACAGAGCAGGGCGGAGGCTGCTCCTGGTCTTGTGAGGTG  
 GGTGATGGTGTTCAGCACGAGTGCCTTCGGCGCCTACTTCAAGCTGACCCAGGGTGGCCCTGGCACTCC  
 TCGCACGTGGCCATCTCGGCGCCTGTCTCTGCACAGCCTGTTGATGCCAGCGTGGGGCTGGCCTGGCTGG  
 CCGTGGGCAGCATGTGCCTCTTCATCGCCGGCTTTGCGGTGGGCTGGGGGCCCATCCCTGGCTCCTCAT  
 GTCAGAGATCTTCCCTCTGCATGTCAAGGGCGTGGCGACAGGCATCTGCGTCTCACCCTGCTCATG  
 GCCTTTCTCGTGACCAAGGAGTTCAGCAGCCTCATGGAGTCTCAGGCCCTATGGAGCCTTCTGGCTTG  
 CCTCCGCTTTCTGCATCTTCAGTGTCTTTTCACTTTGTTCTGTGTCCTGAAACTAAAGGAAAGACTCT  
 GGAACAAATCACAGCCATTTTGGGGGCGA

**ACGCGTACGCGGCCGCTCGAG** – GFP Tag – GTTTAA

**Protein Sequence:**

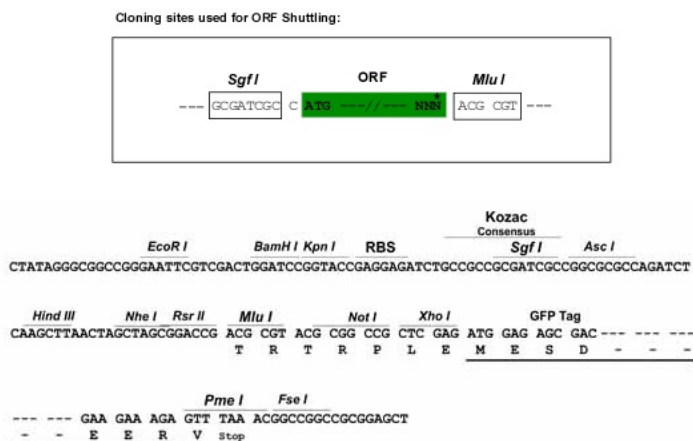
>RG204317 representing NM\_014580  
 Red=Cloning site Green=Tags(s)

MTPEDPEETQPLLGPPGGSAPRRRVFLAAFAAALGPLSFGFALGYSSPAIPSLQRAAPPAPRLDDAAAS  
 WFGAVVTLGAAAGVVLGGWLVDRAGRKLSLLCSVPFVAGFAVITAAQDVWMLLGGRLLTGLACGVASLV  
 APVYI SEIAYPAVRGLLGSCVQLMVVVGILLAYLAGWVLEWRWLA VLGCVPPSLMLLLMCFMPETPRFLL  
 TQHRREQEAMAALRFLWGSEQGWEDPPIGAEQSFHLALLRQPGIYKPFIIIGVSLMAFQQLSGVNAVMFYAE  
 TIFEEAKFKDSSLASVVVGVIVLFTAVAALIMDRAGRRLLLVLSGVVMVFSTSAFGAYFKLTQGGPGNS  
 SHVAISAPVSAQPVDA SVGLAWLAVGSMCLFIAGFAVWGPIPWLLMSEIFPLHVKGVATGICVLTNWL  
 AFLVTKEFSSLMVLRPYGAFWLASAFCIFSVLFTLFCVPETKGTLEQITAHFEGR

**TRTRPLE** – GFP Tag – V

**Restriction Sites:**

Sgfl-MluI

**Cloning Scheme:**


**ACCN:** NM\_014580

**ORF Size:** 1431 bp

**OTI Disclaimer:** The molecular sequence of this clone aligns with the gene accession number as a point of reference only. However, individual transcript sequences of the same gene can differ through naturally occurring variations (e.g. polymorphisms), each with its own valid existence. This clone is substantially in agreement with the reference, but a complete review of all prevailing variants is recommended prior to use. [More info](#)

**OTI Annotation:** This clone was engineered to express the complete ORF with an expression tag. Expression varies depending on the nature of the gene.

**Components:** The ORF clone is ion-exchange column purified and shipped in a 2D barcoded Matrix tube containing 10ug of transfection-ready, dried plasmid DNA (reconstitute with 100 ul of water).

**Reconstitution Method:**

1. Centrifuge at 5,000xg for 5min.
2. Carefully open the tube and add 100ul of sterile water to dissolve the DNA.
3. Close the tube and incubate for 10 minutes at room temperature.
4. Briefly vortex the tube and then do a quick spin (less than 5000xg) to concentrate the liquid at the bottom.
5. Store the suspended plasmid at -20°C. The DNA is stable for at least one year from date of shipping when stored at -20°C.

**RefSeq:** [NM\\_014580.5](#)

**RefSeq Size:** 2145 bp

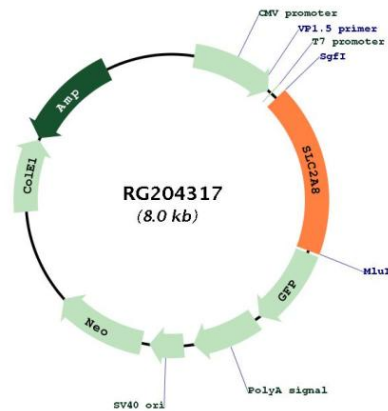
**RefSeq ORF:** 1434 bp

**Locus ID:** 29988

**UniProt ID:** [Q9NY64](#)

Cytogenetics:	9q33.3
Protein Families:	Transmembrane
Gene Summary:	This gene belongs to the solute carrier 2A family, which includes intracellular glucose transporters. Based on sequence comparison, the glucose transporters are grouped into three classes and this gene is a member of class II. The encoded protein, like other members of the family, contains several conserved residues and motifs and 12 transmembrane domains with both amino and carboxyl ends being on the cytosolic side of the membrane. Alternatively spliced transcript variants have been described for this gene. [provided by RefSeq, Nov 2012]

### Product images:



Circular map for RG204317