

Product datasheet for **RG204304**

MED28 (NM_025205) Human Tagged ORF Clone

Product data:

Product Type: Expression Plasmids
Product Name: MED28 (NM_025205) Human Tagged ORF Clone
Tag: TurboGFP
Symbol: MED28
Synonyms: 1500003D12Rik; EG1; magicin
Mammalian Cell Selection: Neomycin
Vector: pCMV6-AC-GFP (PS100010)
E. coli Selection: Ampicillin (100 ug/mL)
ORF Nucleotide Sequence: >RG204304 representing NM_025205
 Red=Cloning site Blue=ORF Green=Tags(s)

TTTTGTAATACGACTCACTATAGGGCGGCCGGAATTCGTCGACTGGATCCGGTACCGAGGAGATCTGCC
 GCC**CGATCGCC**

ATGGCGGCTCCACTAGGGGGTATGTTTTCTGGGCAGCCACCCGGTCCCCCTCAGGCCCGCCGGGCCTTC
 CGGGCCAAGTTCGCTTCTTCAGGCAGCTCCAGGCCTCTAGACCTCCAGCAGTACTTTGGTGGACGA
 GTTGGAGTCATCTTCGAGGCTTGCTTTGCATCTCTGGTGAGTCAGGACTATGTCAATGGCACCGATCAG
 GAAGAAATCGAACCGGTGTTGATCAGTGTATCCAGAAGTTTCTGGATATTGCAAGACAGACAGAATGTT
 TTTTCTTACAAAAAGATTGCAGTTATCTGTCCAGAAACCAGAGCAAGTTATCAAAGAGGATGTGTCAGA
 ACTAAGGAATGAATTACAGCGGAAAGATGCACTAGTCCAGAAGCACTTGACAAAGCTGAGGCATTGGCAG
 CAGGTGCTGGAGGACATCAACGTGCAGCACAAAAAGCCCGCCGACATCCCTCAGGCTCCTTGGCCTACC
 TGGAGCAGGCATCTGCCAACATCCCTGCACCTCTGAAGCCAACG

ACGCGTACGCGGCCGCTCGAG - GFP Tag - GTTTAA

Protein Sequence: >RG204304 representing NM_025205
 Red=Cloning site Green=Tags(s)

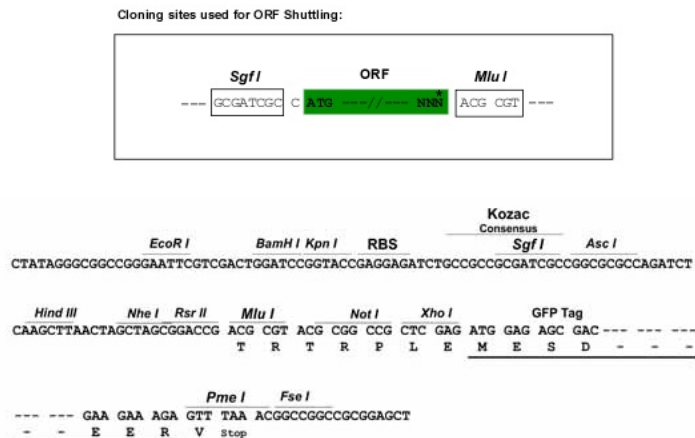
MAAPLGGMFSGQPPGPPQAPPGLPGQASLLQAAPGAPRPSSTLVDELESSFEACFASLVSQDYVNGTDQ
 EEIRTVGDQCIQKFLDIARQTECFLLQKRLQLSVQKPEQVIKEDVSELRNELQRKDALVQKHLTKLRHWQ
 QVLEDINVQHKKPADIPQGLAYLEQASANIPAPLKPT

TRTRPLE - GFP Tag - V

Restriction Sites: Sgfl-MluI



[View online »](#)

Cloning Scheme:


ACCN: NM_025205

ORF Size: 534 bp

OTI Disclaimer: The molecular sequence of this clone aligns with the gene accession number as a point of reference only. However, individual transcript sequences of the same gene can differ through naturally occurring variations (e.g. polymorphisms), each with its own valid existence. This clone is substantially in agreement with the reference, but a complete review of all prevailing variants is recommended prior to use. [More info](#)

OTI Annotation: This clone was engineered to express the complete ORF with an expression tag. Expression varies depending on the nature of the gene.

Components: The ORF clone is ion-exchange column purified and shipped in a 2D barcoded Matrix tube containing 10ug of transfection-ready, dried plasmid DNA (reconstitute with 100 ul of water).

Reconstitution Method:

1. Centrifuge at 5,000xg for 5min.
2. Carefully open the tube and add 100ul of sterile water to dissolve the DNA.
3. Close the tube and incubate for 10 minutes at room temperature.
4. Briefly vortex the tube and then do a quick spin (less than 5000xg) to concentrate the liquid at the bottom.
5. Store the suspended plasmid at -20°C. The DNA is stable for at least one year from date of shipping when stored at -20°C.

Note: Plasmids are not sterile. For experiments where strict sterility is required, filtration with 0.22um filter is required.

RefSeq: [NM_025205.5](#)

RefSeq Size: 1363 bp

RefSeq ORF: 537 bp

Locus ID: 80306

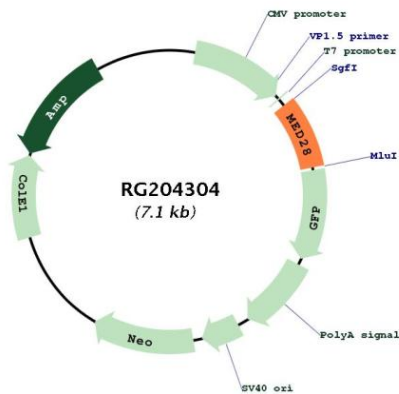
UniProt ID: [Q9H204](#)

Cytogenetics: 4p15.32

Protein Families: Transcription Factors

Gene Summary: Component of the Mediator complex, a coactivator involved in the regulated transcription of nearly all RNA polymerase II-dependent genes. Mediator functions as a bridge to convey information from gene-specific regulatory proteins to the basal RNA polymerase II transcription machinery. Mediator is recruited to promoters by direct interactions with regulatory proteins and serves as a scaffold for the assembly of a functional preinitiation complex with RNA polymerase II and the general transcription factors. May be part of a complex containing NF2/merlin that participates in cellular signaling to the actin cytoskeleton downstream of tyrosine kinase signaling pathways.[UniProtKB/Swiss-Prot Function]

Product images:



Circular map for RG204304