

## Product datasheet for **RG204288**

### **DYNC2I2 (NM\_052844) Human Tagged ORF Clone**

#### **Product data:**

Product Type:	Expression Plasmids
Product Name:	DYNC2I2 (NM_052844) Human Tagged ORF Clone
Tag:	TurboGFP
Symbol:	DYNC2I2
Synonyms:	bA216B9.3; CFAP133; DIC5; FAP133; SRTD11; WDR34
Mammalian Cell Selection:	Neomycin
Vector:	pCMV6-AC-GFP (PS100010)
E. coli Selection:	Ampicillin (100 ug/mL)



[View online »](#)

**ORF Nucleotide Sequence:**

>RG204288 representing NM\_052844  
 Red=Cloning site Blue=ORF Green=Tags(s)

TTTTGTAATACGACTCACTATAGGGCGGCCGGAATTCGTCGACTGGATCCGGTACCGAGGAGATCTGCC  
 GCC**CGCATCGCC**

ATGGCAACCCGCGCAGCCGGGCCACTCAGCCAGGCGGAAGCGCTGGTGTTCGGCGCTGGCGACAG  
 TCGGGTTGCGAGCGGCCCGGGCCGGGGCGCCAGGGCCGCTGCAGGACGAGACCTGGGTGTGGCGTC  
 CGTGCCCTCGCAGTGGAGGGCCGTCCAGGGCATCCGCGGGGAGACGAAAAGTTGCCAGACGGCCAGCATT  
 GCCACTGCCAGTGCATCCGCCAGGCCAGGAATCATGTGGACGCCAGGTGCAGACGGAGGCCCCCGTGC  
 CTGTACAGCGTGCAGCCCCGTCCAGTACGACATACCCAGGCTTGCAGCCTTTCTTCGGAGAGTGGAGGC  
 CATGGTCAATCCGAGAGCTGAACAAGAATTGGCAGAGCCACGCGTTTGTGGCTTCGAGGTGAAGTGGACC  
 GAGCAGCAGCAGATGGTGTCTTGTCTGTATACCCTGGGCTACCCGCCAGCCCAAGCGCAGGGTCTGCATG  
 TGACCAGCATCTCCTGGAATCCACTGGCTCTGTGGTGGCCTGTGCCTACGGCCGGCTGGACCATGGGA  
 CTGGAGCAGCTTAAGTCTTCGTGTGCCTGGAACCTGGACCGGCGAGACCTGCGTCCCAGCAACCG  
 TCGGCCGTGGTGGAGTCCCAGCGCTGTCTGTCTGGCCTTCCACCCACGCAGCCCTCCCAGTGC  
 CAGGAGGGCTGTACAGTGGTGGGTGTTGGTGTGGGACCTGAGCCGCTTTCGAGGACCCGCTGCTGTGGCG  
 CACAGGCTGACGGATGACACCCACACAGACCCTGTGTCCAGGTGGTGTGGCTGCCGAGCCTGGGCAC  
 AGCCACCCTTCCAGGTGCTGAGTGTGGCCACTGACGGGAAGGTGCTACTCTGGCAGGGCATCGGGTAG  
 GCCAGTGCAGCTCACAGAGGGCTTCGCCCTGGTATGCAGCAGCTGCCACGGAGACCAAGCTCAAGAA  
 GCATCCCCGCGGGGAGACCGAGGTGGGCGCCACGGCAGTGGCCTTCTCCAGCTTTGACCCTAGGCTGTT  
 ATCTGGGCACGGAAGGCGGCTTCCCGCTCAAGTGTTCCTGGCAGCTGGAGAGGCAGCCCTCACGCGGA  
 TGCCAGCTCCGTGCCCTCGGGCCCGCCAGCAGTTCACCTTCCCCCACGGCGGTCCCATCTACTC  
 TGTGAGCTGTTCCCTTCCACAGGAATCTCTTCTGAGCGCTGGGACTGACGGGCATGTCCACCTGTAC  
 TCCATGCTGCAGGCCCTCCCTTGAATCGCTGCAGCTCTCCCTCAAGTATCTGTTTGTGTGCGCTGGT  
 CCCCAGTGCAGCCCTTGGTTTTTGCAGCTGCCTCTGGAAAGGTGACGTGCAGCTGTTTGTCTCCAGAA  
 AAGCTCCAGAAACCCACAGTTTTGATCAAGCAAAACCCAGGATGAAAGCCCTGTCTACTGTCTGGAGTTC  
 AACAGCCAGCAGACTCAGCTCTTGGCTGCGGGCGATGCCAGGGCACAGTGAAGGTGTGGCAGCTGAGCA  
 CAGAGTTCACGGAACAAGGGCCCGGGAAGCTGAGGACCTGGACTGCCTGGCAGCAGAGGTGGCGGCC

AGCGGACCGACGCGTACGCGGCCGCTCGAG - GFP Tag - GTTTAA

**Protein Sequence:**

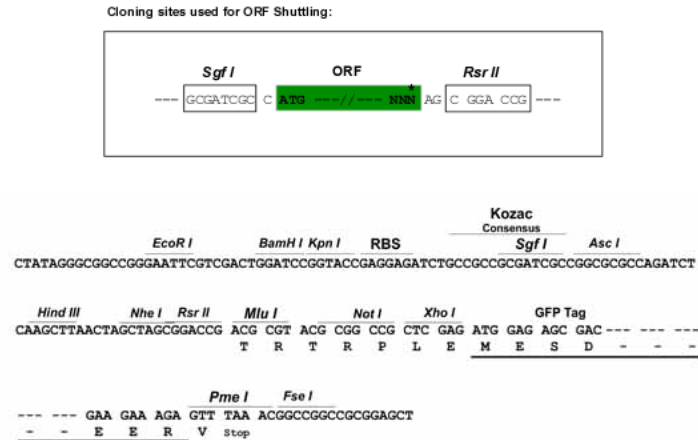
>RG204288 representing NM\_052844  
 Red=Cloning site Green=Tags(s)

MATRAQPGPLSQAGSAGVAALATVGVASGPGPRPGLQDELGVASVPSQWRAVQGIKGETKSCQTASI  
 ATASASAQARNHVDAQVQTEAPVPVSVQPPSQYDIPRLAAFLRRVEAMVIRELNKNWQSHAFDGFVNWT  
 EQQQMVSLYLTYLGYPPAQAGLHVTSISWNSTGSVVACAYGRLDHGDWSTLKSFVCAWNLDRRDLRPQQP  
 SAVVEVPSAVLCLAFHPTQPSHVAGGLYSGEVLVWDLRLEDPLLRWRTGLTDDTHTPVSVVWLPPEP  
 SHRFQVLSVATDQKLVLLWQIGVQQLQLEGFALVMQQLPRSTLKKHPRGETEVGATAVAFSSFPRLF  
 ILGTEGGFPLKCSLAAGEAALTRMPSSVPLRAPAQFTFSPHGGPIYSVSCSPFHRNLFSLAGTDGHVHLY  
 SMLQAPPLTSLQLSLKYLFAVRWSPVRPLVFAAASGKGDVQLFDLQKSSQKPTVLIKQTQDESPVYCLEF  
 NSQQTQLLAAGDAQGTVKVWQLSTEFTEQGPRAEDLDCLAAEVAA

SGPTRRRLE - GFP Tag - V

**Restriction Sites:**

Sgfl-RsrII

**Cloning Scheme:**


**ACCN:** NM\_052844

**ORF Size:** 1608 bp

**OTI Disclaimer:** The molecular sequence of this clone aligns with the gene accession number as a point of reference only. However, individual transcript sequences of the same gene can differ through naturally occurring variations (e.g. polymorphisms), each with its own valid existence. This clone is substantially in agreement with the reference, but a complete review of all prevailing variants is recommended prior to use. [More info](#)

**OTI Annotation:** This clone was engineered to express the complete ORF with an expression tag. Expression varies depending on the nature of the gene.

**Components:** The ORF clone is ion-exchange column purified and shipped in a 2D barcoded Matrix tube containing 10ug of transfection-ready, dried plasmid DNA (reconstitute with 100 ul of water).

**Reconstitution Method:**

1. Centrifuge at 5,000xg for 5min.
2. Carefully open the tube and add 100ul of sterile water to dissolve the DNA.
3. Close the tube and incubate for 10 minutes at room temperature.
4. Briefly vortex the tube and then do a quick spin (less than 5000xg) to concentrate the liquid at the bottom.
5. Store the suspended plasmid at -20°C. The DNA is stable for at least one year from date of shipping when stored at -20°C.

**RefSeq:** [NM\\_052844.3](#), [NP\\_443076.2](#)

**RefSeq Size:** 1818 bp

**RefSeq ORF:** 1611 bp

**Locus ID:** 89891

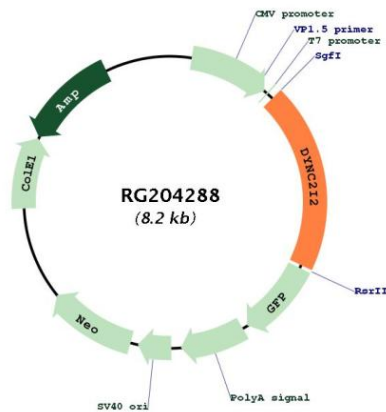
**UniProt ID:** [Q96EX3](#)

**Cytogenetics:** 9q34.11

**Domains:** WD40

**Gene Summary:** This gene encodes a member of the WD repeat protein family. WD repeats are minimally conserved regions of approximately 40 amino acids typically bracketed by gly-his and trp-asp (GH-WD), which may facilitate formation of heterotrimeric or multiprotein complexes. Members of this family are involved in a variety of cellular processes, including cell cycle progression, signal transduction, apoptosis, and gene regulation. Defects in this gene are a cause of short-rib thoracic dysplasia 11 with or without polydactyly. [provided by RefSeq, Mar 2014]

**Product images:**



Circular map for RG204288