

Product datasheet for **RG204281**

THAP11 (NM_020457) Human Tagged ORF Clone

Product data:

Product Type:	Expression Plasmids
Product Name:	THAP11 (NM_020457) Human Tagged ORF Clone
Tag:	TurboGFP
Symbol:	THAP11
Synonyms:	CTG-B43a; CTG-B45d; HRIHFB2206; RONIN
Mammalian Cell Selection:	Neomycin
Vector:	pCMV6-AC-GFP (PS100010)
E. coli Selection:	Ampicillin (100 ug/mL)
ORF Nucleotide Sequence:	>RG204281 representing NM_020457 Red=Cloning site Blue=ORF Green=Tags(s)

TTTTGTAATACGACTCACTATAGGGCGGCCGGAATTCGTCGACTGGATCCGGTACCGAGGAGATCTGCC
GCC**CGATCGCC**

ATGCCTGGCTTTACGTGCTGCGTGCCAGGCTGCTACAACAACCTCGCACCGGGACAAGGGCTGCACTTCT
ACACGTTTCAAAGGACGCTGAGTTGCGGCGCCTCTGGCTCAAGAACGTGTCGCGTGCCGGCGTCAGTGG
GTGCTTCTCCACCTTCCAGCCCACCACAGGCCACCGTCTCTGCAGCGTCACTTCCAGGGCGGCCGCAAG
ACCTACACGGTACGCGTCCCCACCATCTTCCCCTGCGCGCGTCAATGAGCGCAAAGTAGCGCGCAGAC
CCGCTGGGGCCGCGGCCGCCCGCAGGCAGCAGCAGCAACAGCAGCAGCAGCAACAGCAGCAACA
GCAGCAGCAGCAACAGCAGCAGCAGCAGCAGCAGCAGTCTCACCTCTGCCTCCACTGCCAG
ACTGCCAGCTGCAGCCGAACCTGGTATCTGCTTCCGCGCCGTGCTTCTCACCTTCAGGCCACTGTAG
ACAGCAGTCAGGCTCCGGGATCCGTACAGCCGGCGCCATCACTCCCCTGGAGAAGACGTGAAGCCAT
CGATCTCACAGTGCAAGTGGAGTTTGCAGCCGAGAGGGCGCAGCCGCTGCGGCCGCCGCTCGGAGTTA
CAGGCTGCTACCGCAGGGCTGGAGGCTGCCGAGTGCCCTATGGGCCCCAGTTGGTGGTGGTAGGGGAAG
AGGGCTTCCCTGATACTGGCTCCGACATTCGTAATCTGTGTCAGGCACCACGGAGGAGGAGCTCCT
GCGCAAGCTGAATGAGCAGCGGGACATCCTGGCTCTGATGGAAGTGAAGATGAAAGAGATGAAAGGCAGC
ATTCGCCACCTGCGTCTCACTGAGGCCAAGCTGCGCAAGAAGTCCGTGAGAAGGATCGGCTGCTTGCCA
TGGCTGTCATCCGCAAGAAGCACGGAATG

AG**CGGACCG**ACGCGTACGCGGCCGCTCGAG - GFP Tag - GTTTAA



[View online »](#)

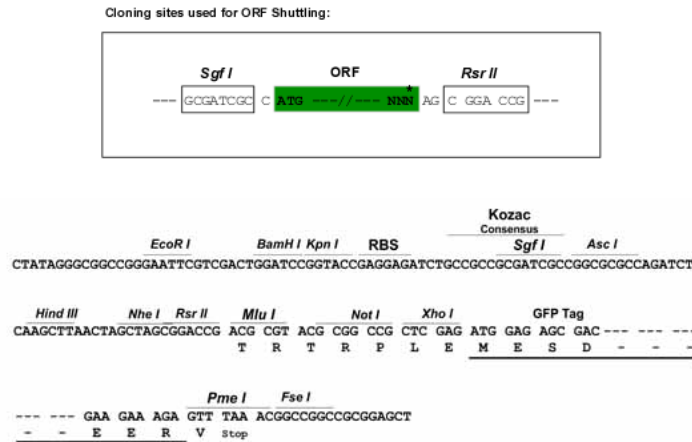
Protein Sequence: >RG204281 representing NM_020457
Red=Cloning site Green=Tags(s)

MPGFTCCVPGCYNNSHRDKALHFYTFPKDAELRRLWLKNVSRAGVSGCFSTFQPTTGHR LCSVHFQGGRK
 TYTVRVPTIFPLRGVNERKVARRPAGAAAARRRQQQQQQQQQQQQQQQQQQQQQQSSPSASTAQ
 TAQLQPNLVSASAAVLLTLQATVDSSQAPGSVQPAPITPTGEDVKPIDLTVQVEFAAAEGAAAAAASEL
 QAATAGLEAAECPMGPQLVVVGEEGFPDTGSDHSYLSSTGTEELLRKLNEQRDILALMEVKMKEMKGS
 IRHLRLTEAKLREELREKDRLLAMAVIRKKHGM

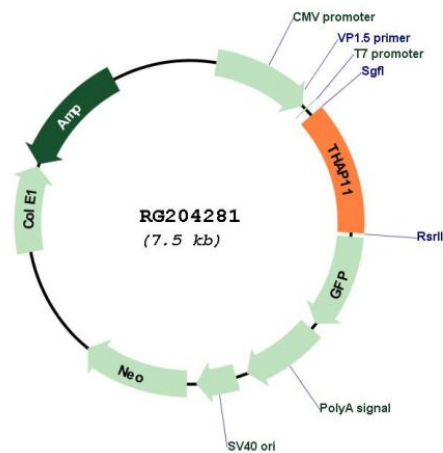
SGPTRRRLE - GFP Tag - V

Restriction Sites: SgfI-RsrII

Cloning Scheme:



Plasmid Map:



ACCN: NM_020457

ORF Size: 942 bp

OTI Disclaimer:	The molecular sequence of this clone aligns with the gene accession number as a point of reference only. However, individual transcript sequences of the same gene can differ through naturally occurring variations (e.g. polymorphisms), each with its own valid existence. This clone is substantially in agreement with the reference, but a complete review of all prevailing variants is recommended prior to use. More info
OTI Annotation:	This clone was engineered to express the complete ORF with an expression tag. Expression varies depending on the nature of the gene.
Components:	The ORF clone is ion-exchange column purified and shipped in a 2D barcoded Matrix tube containing 10ug of transfection-ready, dried plasmid DNA (reconstitute with 100 ul of water).
Reconstitution Method:	<ol style="list-style-type: none">1. Centrifuge at 5,000xg for 5min.2. Carefully open the tube and add 100ul of sterile water to dissolve the DNA.3. Close the tube and incubate for 10 minutes at room temperature.4. Briefly vortex the tube and then do a quick spin (less than 5000xg) to concentrate the liquid at the bottom.5. Store the suspended plasmid at -20°C. The DNA is stable for at least one year from date of shipping when stored at -20°C.
RefSeq:	NM_020457.1
RefSeq Size:	1903 bp
RefSeq ORF:	945 bp
Locus ID:	57215
UniProt ID:	Q96EK4
Cytogenetics:	16q22.1
Gene Summary:	The protein encoded by this gene contains a THAP domain, which is a conserved DNA-binding domain that has striking similarity to the site-specific DNA-binding domain (DBD) of Drosophila P element transposases. [provided by RefSeq, Jul 2008]