

Product datasheet for **RG204279**

FURIN (NM_002569) Human Tagged ORF Clone

Product data:

Product Type:	Expression Plasmids
Product Name:	FURIN (NM_002569) Human Tagged ORF Clone
Tag:	TurboGFP
Symbol:	FURIN
Synonyms:	FUR; PACE; PCSK3; SPC1
Mammalian Cell Selection:	Neomycin
Vector:	pCMV6-AC-GFP (PS100010)
E. coli Selection:	Ampicillin (100 ug/mL)



[View online »](#)

ORF Nucleotide Sequence:

>RG204279 representing NM_002569
 Red=Cloning site Blue=ORF Green=Tags(s)

TTTTGTAATACGACTCACTATAGGGCGGCCGGAATTCGTCGACTGGATCCGGTACCGAGGAGATCTGCC
 GCC**CGGATCGCC**

ATGGAGCTGAGGCCCTGGTTGCTATGGGTGGTAGCAGCAACAGGAACCTTGGTCCTGCTAGCAGCTGATG
 CTCAGGGCCAGAAGGTCTTCACCAACACGTGGGCTGTGCGCATCCCTGGAGGCCACGCGTGGCCAACAG
 TGTGGCACGGAAGCATGGGTTCCCAACCTGGGCCAGATCTTCGGGGACTATTACCACTTCTGGCATCGA
 GGAGTGACGAAGCGGTCCCTGTCGCTCACCGCCCGGGCACAGCCGGCTGCAGAGGGAGCCTCAAGTAC
 AGTGGCTGGAACAGCAGGTGGCAAAGCGACGGACTAAACGGGACGTGTACCAGGAGCCCACAGACCCCAA
 GTTTCCTCAGCAGTGGTACCTGTCTGGTGTCACTCAGCGGGACCTGAATGTGAAGCGGCCCTGGGCGCAG
 GGCTACACAGGGCACGGCATTGTGGTCTCCATTCTGGACGATGGCATCGAGAAGAACCACCCGGACTTGG
 CAGGCAATTATGATCCTGGGGCCAGTTTGTATGTCAATGACCAGGACCCTGACCCCGAGCCTCGGTACAC
 ACAGATGAATGACAACAGGCACGGCACACGGTGTGCGGGGAAGTGGCTGCGGTGGCCAACAACGGTGTG
 TGTGGTGTAGGTGTGGCCTACAACGCCCGCATTGGAGGGGTGCGCATGTGGATGGCGAGGTGACAGATG
 CAGTGGAGGCACGCTCGCTGGGCCTGAACCCCAACCACATCCACATCTACAGTGGCAGCTGGGGCCCGCA
 GGATGACGGCAAGACAGTGGATGGGCCAGCCCGCCTCGCCGAGGAGGCCTTCTTCGTGGGGTTAGCCAG
 GGCCGAGGGGGCTGGGCTCCATCTTTGTCTGGGCCTCGGGGAACGGGGCCGGGAACATGACAGCTGCA
 ACTGCGACGGCTACACCAACAGTATCTACACGCTGTCCATCAGCAGCGCCACGCAGTTTGGCAACGTGCC
 GTGGTACAGCGAGGCCTGCTCGTCCACTGGCCACGACCTACAGCAGTGGCAACCAGAATGAGAAGCAG
 ATCGTGACGACTGACTTGGCGCAGAAGTGCACGGAGTCTCACACGGCACCTCAGCCTTGCCCCCTTAG
 CAGCCGGCATATTGCTCTCACCTGGAGGCCAATAAGAACCTCACATGGCGGGACATGCAACACCTGGT
 GGTACAGACCTCGAAGCCAGCCACCTCAATGCCAACGACTGGGCCACCAATGGTGTGGCCGGAAGTG
 AGCCACTCATATGGCTACGGGCTTTTGGACGCAGGCGCCATGGTGGCCCTGGCCAGAATTGGACCACAG
 TGGCCCCCAGCGGAAGTGCATCATCGACATCCTCACCGAGCCAAAGACATCGGAAACGGCTCGAGGT
 GCGGAAGACCGTGACCGCGTGCCTGGGCGAGCCCAACCACATCACTCGGCTGGAGCACGCTCAGGCGCG
 CTCACCTGTCTATAATCGCCGTGGGACCTGGCCATCCACCTGGTCAAGCCCATGGGCACCCGCTCCA
 CCCTGCTGGCAGCCAGGCCACATGACTACTCCGCAGATGGGTTTAAATGACTGGGCCTTCATGACAACTCA
 TTCTGGGATGAGGATCCCTCTGGCGAGTGGTCTAGAGATTGAAAACACCAGCGAAGCCAACAACAT
 GGGACGCTGACCAAGTTCACCTCGTACTCTATGGCACCGCCCTGAGGGGCTGCCCGTACCTCCAGAAA
 GCAGTGGCTGCAAGACCTCACGTCCAGTCAGGCCTGTGTGGTGTGCGAGGAAGGCTTCCCTGCACCA
 GAAGAGCTGTGTCCAGCACTGCCCTCCAGGCTTCGCCCCCAAGTCTCGATACGCACTATAGCACCGAG
 AATGACGTGGAGACCATCCGGGGCAGCGTCTGCGCCCCCTGCCACGCCTCATGTGCCACATGCCAGGGGC
 CGGCCCTGACAGACTGCCTCAGCTGCCCGACCCAGCCTCCTTGGACCCTGTGGAGCAGACTTGCTCCCG
 GCAAAGCCAGAGCAGCCGAGAGTCCCGCCACAGCAGCAGCCACCTCGGCTGCCCCCGGAGGTGGAGGCG
 GGGCAACGGCTGCGGGCAGGGCTGCTGCCCTCACACCTGCCTGAGGTGGTGGCCGGCCTCAGCTGCGCCT
 TCATCGTGCTGGTCTTCGTCAGTGTCTTCTGGTCTGCAGCTGCGCTCTGGCTTTAGTTTTCGGGGGT
 GAAGGTGTACACCATGGACCGTGGCCTCATCTCCTACAAGGGGCTGCCCCCTGAAGCCTGGCAGGAGGAG
 TGCCCGTCTGACTCAGAAGAGGACGAGGGCCGGGGCGAGAGGACCGCCTTATCAAAGACCAGAGCGCCC
 TC

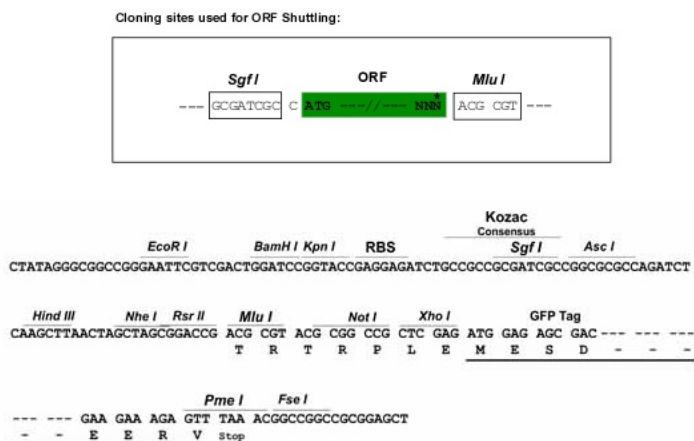
ACGCGTACGCGGCCGCTCGAG - GFP Tag - GTTTAA

Protein Sequence: >RG204279 representing NM_002569
 Red=Cloning site Green=Tags(s)

```
MELRPWLLWVVAATGTLVLLAADAQGQKVFNTWAVRIPGGPAVANSVARKHGFLNLGQIFGDYYHFWHR
GVTKRSLSPHRPRHSRLQREPQVWLEQQVAKRRTKRDVYQEPTDPKFPQQWYLSGVTQRDLNVKAAWAQ
GYTGHGIVVSIILDDGIEKNHPDLAGNYDPGASFVDVNDQDPDPQRYTQMNDNRHGTRCAGEVAAVANNGV
CGVGVAYNARIGGVRMLDGEVTDAVEARSLGLNPNHIHIYSASWGPEDDGKTVDGPARLAEEAFFRGVSQ
GRGGLGSIFVWASGNGGREHDSNCNCDGYTNSIYTLSSISSATQFGNVPWYSEACSSTLATTYSSGNQNEKQ
IVTTDLRQKCTESHTGTSASAPLAAGIIALTLEANKNL TWRDMQHLVVQT SKPAHLNANDWATNGVGRKV
SHSYGYGLLDAGAMVALAQNWTTVAPQRKCIIDILTEPKDIGKRLEVRKTVTA CLGEPNHITRLEHAQAR
LTL SYNRRGDLA IHLVSPMGTRSTLLAARPHDYSADGFNDWAFMTTHSWDEDPSGEWVLEIENTSEANNY
GTLTKFTLVLYGTAPEGLPVPPESSGCKLTSSQACVVCEEGLSLHQBKSCVQHCPPGFAPQVLDTHYSTE
NDVETIRASVCAPCHASCATCQGPALTDCLSCPHASLDPVEQTCSRQSQSSRESPPQQPPRLPPEVEA
GQRLRAGLLPSHLPVAVGLSCAFIVLVFVTVFLVLQLRSGFSFRGVKVVYTMDRGLISYKGLPPEAWQEE
CPSDSEEDGREGERTAFIKDQSAL
```

TRTRPLE - GFP Tag - V

Restriction Sites: Sgfl-MluI

Cloning Scheme:


ACCN:	NM_002569
ORF Size:	2382 bp
OTI Disclaimer:	The molecular sequence of this clone aligns with the gene accession number as a point of reference only. However, individual transcript sequences of the same gene can differ through naturally occurring variations (e.g. polymorphisms), each with its own valid existence. This clone is substantially in agreement with the reference, but a complete review of all prevailing variants is recommended prior to use. More info
OTI Annotation:	This clone was engineered to express the complete ORF with an expression tag. Expression varies depending on the nature of the gene.
Components:	The ORF clone is ion-exchange column purified and shipped in a 2D barcoded Matrix tube containing 10ug of transfection-ready, dried plasmid DNA (reconstitute with 100 ul of water).

Reconstitution Method:

1. Centrifuge at 5,000xg for 5min.
2. Carefully open the tube and add 100ul of sterile water to dissolve the DNA.
3. Close the tube and incubate for 10 minutes at room temperature.
4. Briefly vortex the tube and then do a quick spin (less than 5000xg) to concentrate the liquid at the bottom.
5. Store the suspended plasmid at -20°C. The DNA is stable for at least one year from date of shipping when stored at -20°C.

RefSeq: [NM_002569.1](#)

RefSeq Size: 4180 bp

RefSeq ORF: 2385 bp

Locus ID: 5045

UniProt ID: [P09958](#)

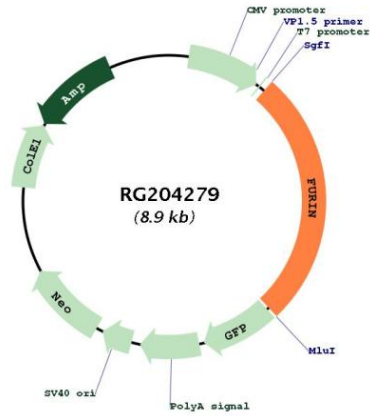
Cytogenetics: 15q26.1

Domains: Peptidase_S8, P_proprotein, FU

Protein Families: Druggable Genome, Protease, Transmembrane

Gene Summary: This gene encodes a member of the subtilisin-like proprotein convertase family, which includes proteases that process protein and peptide precursors trafficking through regulated or constitutive branches of the secretory pathway. It encodes a type 1 membrane bound protease that is expressed in many tissues, including neuroendocrine, liver, gut, and brain. The encoded protein undergoes an initial autocatalytic processing event in the ER and then sorts to the trans-Golgi network through endosomes where a second autocatalytic event takes place and the catalytic activity is acquired. Like other members of this convertase family, the product of this gene specifically cleaves substrates at single or paired basic residues. Some of its substrates include proparathyroid hormone, transforming growth factor beta 1 precursor, proalbumin, pro-beta-secretase, membrane type-1 matrix metalloproteinase, beta subunit of pro-nerve growth factor and von Willebrand factor. It is thought to be one of the proteases responsible for the activation of HIV envelope glycoproteins gp160 and gp140, and may play a role in tumor progression. Unlike SARS-CoV and other coronaviruses, the spike protein of SARS-CoV-2 is thought to be uniquely cleaved by this protease. Alternative splicing results in multiple transcript variants. [provided by RefSeq, Aug 2020]

Product images:



Circular map for RG204279