

Product datasheet for **RG204275**

FLYWCH2 (NM_138439) Human Tagged ORF Clone

Product data:

Product Type: Expression Plasmids
Product Name: FLYWCH2 (NM_138439) Human Tagged ORF Clone
Tag: TurboGFP
Symbol: FLYWCH2
Mammalian Cell Selection: Neomycin
Vector: pCMV6-AC-GFP (PS100010)
E. coli Selection: Ampicillin (100 ug/mL)
ORF Nucleotide Sequence: >RG204275 representing NM_138439
Red=Cloning site **Blue**=ORF **Green**=Tags(s)

TTTTGTAATACGACTCACTATAGGGCGGCCGGAATTCGTCGACTGGATCCGGTACCGAGGAGATCTGCC
GCC**CGATCGCC**

ATGCCCTGCCCCGAGCCAGCGAGCAGGAGGGTGAGAGTGTGAAGGCCAGCCAGGAGCCATCCCCAAGC
CAGGCACAGAAGTCATCCCGGCAGCCCCAGGAAGCCAGAAAGTTCTCCAACTGGTCTGTCTCACAGC
CTCCAAAGACAGCACCAAGGTGGCGGGGCCAAGCGCAAGGGTGTGCACTGTGTCTATGTCCTGGGGTG
CCCGCCCCGCCACCTTGCCAAGGCCCTCCTCCAGACCCACCCGAGGCCAGCGGGCCATTGAGGCAG
CCCCTCAGGAGCCTGAGCAGAAACGGAGCAGGACCCAGGCACAGACAGAACAGAAGACAGTGGATT
AGCAGCGGGGCCCTCTGAGGCTGCTGGGGAAGTCTTCCCCCTGCTCTGTGGCGCCCGCAAGTCCCTG

ACGCGTACGCGGCCGCTCGAG - GFP Tag - GTTTAA

Protein Sequence: >RG204275 representing NM_138439
Red=Cloning site **Green**=Tags(s)

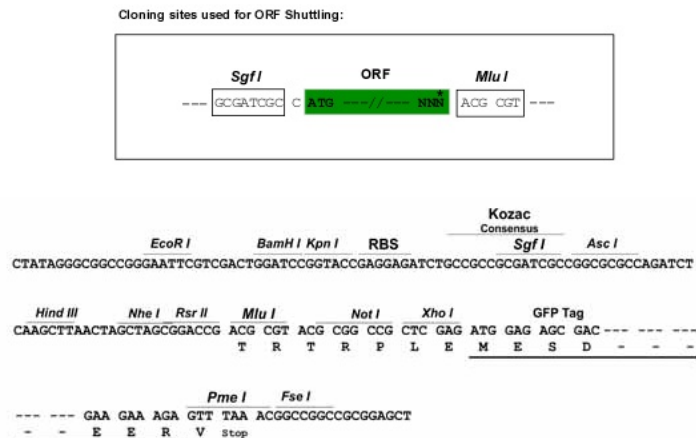
MPLPEPSEQEGESVKASQEPSPKPGTEVIPAAPRKPRKFSKLVLLTASKDSTKVAGAKRKGVHCVMSLGV
PGPATLAKALLQTHPEAQRAIEAAPQEPEQKRSRQDPGTDRTEDSGLAAGPPEAAGENFAPCSVAPGKSL

TRTRPLE - GFP Tag - V

Restriction Sites: SgfI-MluI



[View online »](#)

Cloning Scheme:


ACCN: NM_138439

ORF Size: 420 bp

OTI Disclaimer: The molecular sequence of this clone aligns with the gene accession number as a point of reference only. However, individual transcript sequences of the same gene can differ through naturally occurring variations (e.g. polymorphisms), each with its own valid existence. This clone is substantially in agreement with the reference, but a complete review of all prevailing variants is recommended prior to use. [More info](#)

OTI Annotation: This clone was engineered to express the complete ORF with an expression tag. Expression varies depending on the nature of the gene.

Components: The ORF clone is ion-exchange column purified and shipped in a 2D barcoded Matrix tube containing 10ug of transfection-ready, dried plasmid DNA (reconstitute with 100 ul of water).

Reconstitution Method:

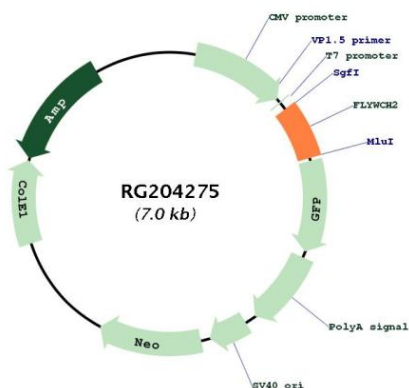
1. Centrifuge at 5,000xg for 5min.
2. Carefully open the tube and add 100ul of sterile water to dissolve the DNA.
3. Close the tube and incubate for 10 minutes at room temperature.
4. Briefly vortex the tube and then do a quick spin (less than 5000xg) to concentrate the liquid at the bottom.
5. Store the suspended plasmid at -20°C. The DNA is stable for at least one year from date of shipping when stored at -20°C.

Note: Plasmids are not sterile. For experiments where strict sterility is required, filtration with 0.22um filter is required.

RefSeq: [NM_138439.3](#)

RefSeq Size: 897 bp
 RefSeq ORF: 423 bp
 Locus ID: 114984
 UniProt ID: [Q96CP2](#)
 Cytogenetics: 16p13.3

Product images:



Circular map for RG204275