

Product datasheet for **RG204273**

EID2 (NM_153232) Human Tagged ORF Clone

Product data:

Product Type: Expression Plasmids
 Product Name: EID2 (NM_153232) Human Tagged ORF Clone
 Tag: TurboGFP
 Symbol: EID2
 Synonyms: CR12; EID-2
 Mammalian Cell Selection: Neomycin
 Vector: pCMV6-AC-GFP (PS100010)
 E. coli Selection: Ampicillin (100 ug/mL)
 ORF Nucleotide Sequence: >RG204273 representing NM_153232
 Red=Cloning site Blue=ORF Green=Tags(s)

TTTTGTAATACGACTCACTATAGGGCGGCCGGAATTCGTCGACTGGATCCGGTACCGAGGAGATCTGCC
 GCC**CGATCGCC**

ATGTCCAAGCTGCCCGCAGACAGCAGTGTCCCGCAGACAGGCGCGGAATGGTGACAGAGACGTCCCGC
 AGGCGGAGGTAGGCCGCGGGAGGCGGGAGCCGGCCCCGGCACAGCCTGAGGAGGCCGGGAAGGCGCGAT
 GGCGGCGCCAGGGGAGGCCGGTGC CGCGGCCAGGGAAGTTCGGATGGCGGCGCCAGGGCAGCCCCG
 GCGGCGCAGCCAGGGGAGCCCCGGTGGCAGCGCGGCGTTGGCCAGGGCAGCCGCGCGGGCAGGGAAA
 GCCCGGCGCGGCGGCGGCCAGGGAAGCCGGATGGCGGAGGTCGCCGCTTGCTGGGGAGCCAGTGGA
 CGAAGAGGGTCCCGAGGGCAGGCCAGGTCCAGACACGGGAACGGAGGCCTGGCTGCGTTGCCCTATCTC
 CGTCTCCGCCACCCACTTAGCGTTTTAGGCATCAATTACCAGCAGTTTTCTCCGCCACTATCTGAAAATT
 ACCCGATTGCTCCCGGCAGAATAACAAGACTTGAAGAACGCCGAGGCGATTTCGTGGAAGCCTGCAGAGC
 AAGGGAAGCAGCGTTTGATGCCGAATATCAGCGAAATCCTCACAGGGTGGACCTCGATATTTAACCTTT
 ACGATAGCTTGACTGCCTCTGAAGTTATCAACCCTCTGATAGAAGAAGTTGGTTGCGATAAGTTTATCA
 ATAGAGAA

ACGCGTACGCGGCCGCTCGAG - GFP Tag - GTTTAA



[View online »](#)

Protein Sequence: >RG204273 representing NM_153232
Red=Cloning site Green=Tags(s)

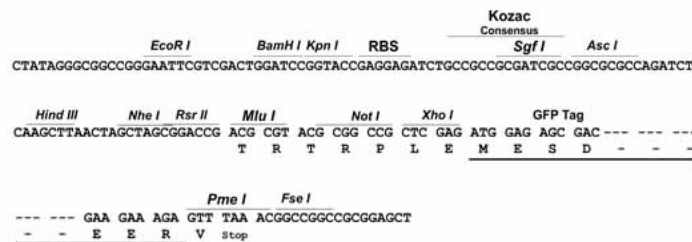
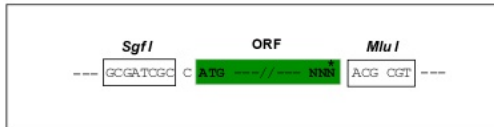
MSKLPADSSVPQTGAANGDRDVPQAEVGRGRREPAPAQPEEAGEGAMAAAARGGPVPAAREGRMAAARAAP
 AAAARGAPVAAAAARAAAAGRESAAAAAREARMAEVARLLGEPVDEEGPEGRPRSRRHGNGGLAALPYL
 RLRHPLSVLGINYQQFLRHYLENYPIAPGRIQELEERRRRFVEACRAREAAFDAEYQRNPHRVDLDILTF
 TIALTASEVINPLIEELGCDKFINRE

TRTRPLE - GFP Tag - V

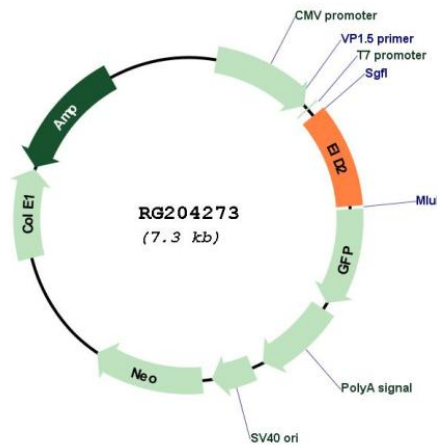
Restriction Sites: SgfI-MluI

Cloning Scheme:

Cloning sites used for ORF Shutting:



Plasmid Map:



ACCN: NM_153232

ORF Size: 708 bp

OTI Disclaimer:	The molecular sequence of this clone aligns with the gene accession number as a point of reference only. However, individual transcript sequences of the same gene can differ through naturally occurring variations (e.g. polymorphisms), each with its own valid existence. This clone is substantially in agreement with the reference, but a complete review of all prevailing variants is recommended prior to use. More info
OTI Annotation:	This clone was engineered to express the complete ORF with an expression tag. Expression varies depending on the nature of the gene.
Components:	The ORF clone is ion-exchange column purified and shipped in a 2D barcoded Matrix tube containing 10ug of transfection-ready, dried plasmid DNA (reconstitute with 100 ul of water).
Reconstitution Method:	<ol style="list-style-type: none">1. Centrifuge at 5,000xg for 5min.2. Carefully open the tube and add 100ul of sterile water to dissolve the DNA.3. Close the tube and incubate for 10 minutes at room temperature.4. Briefly vortex the tube and then do a quick spin (less than 5000xg) to concentrate the liquid at the bottom.5. Store the suspended plasmid at -20°C. The DNA is stable for at least one year from date of shipping when stored at -20°C.
RefSeq:	NM_153232.4
RefSeq Size:	1409 bp
RefSeq ORF:	711 bp
Locus ID:	163126
UniProt ID:	Q8N6I1
Cytogenetics:	19q13.2
Protein Families:	Druggable Genome, Transcription Factors
Gene Summary:	Interacts with EP300 and acts as a repressor of MYOD-dependent transcription and muscle differentiation. Inhibits EP300 histone acetyltransferase activity. Acts as a repressor of TGFB/SMAD transcriptional responses. May act as a repressor of the TGFB/SMAD3-dependent signaling by selectively blocking formation of TGFB-induced SMAD3-SMAD4 complex. [UniProtKB/Swiss-Prot Function]