

Product datasheet for **RG204270**

CLPTM1 (NM_001294) Human Tagged ORF Clone

Product data:

Product Type:	Expression Plasmids
Product Name:	CLPTM1 (NM_001294) Human Tagged ORF Clone
Tag:	TurboGFP
Symbol:	CLPTM1
Mammalian Cell Selection:	Neomycin
Vector:	pCMV6-AC-GFP (PS100010)
E. coli Selection:	Ampicillin (100 ug/mL)



[View online »](#)

ORF Nucleotide Sequence:

>RG204270 representing NM_001294
 Red=Cloning site Blue=ORF Green=Tags(s)

TTTTGTAATACGACTCACTATAGGGCGGCCGGGAATTCGTCGACTGGATCCGGTACCGAGGAGATCTGCC
 GCC**CGGATCGCC**

ATGGCGGGCGCAGGAGCGGACGGGGCCCGCAGCGCCGTGGTGCGGGCGGGGAGGCAGCTCCGGTC
 AGGTGACCAGCAATGGCAGCATCGGGAGGGACCCGCCAGCGGAGACCCAGCCTCAGAACCCACCGGCCA
 GCCGGCACCCAATGCCTGGCAGGTCATCAAAGGTGTGCTGTTTAGGATCTTCATCATCTGGGCCATCAGC
 AGTTGGTTCGGCCGAGGGCCGGCCCTCAGGACCAGGCGGGCCCGGAGGAGCCACCGCTCGCCAGCC
 GCAACCTGTTCCCAAAGACTTTAATGAACCTGCATGTGTACATCTCAGAGCAGGAGCACTTTACAGA
 CTTCAACGCCACGTGGCACTCTTCTGGGAACAGCAGCATCTTGTGTATGGCGACTGGACTAGCGGCGAG
 AACTCAGACGGCTGCTACGAGCACTTTGCTGAGCTCGATATCCACAGAGCGTCCAGCAGAACGGCTCCA
 TCTACATCCACGTTTACTTCACCAAGAGTGGCTTCCACCCAGACCCCGCAGAAGGCCCTGTACCGCCG
 GCTTGCCACAGTCCACATGTCCCGGATGATCAACAAATACAAGCGCAGACGATTTAGAAAACCAAGAAC
 CTGCTGACAGGAGAGACAGAAGCGGACCCAGAAATGATCAAGAGGGCTGAGGACTATGGGCTGTGGAGG
 TGATCTCCATTGGCACCCCAACATCACCATCAACATCGTGGACGACCACACGCCGTGGGTGAAGGGCAG
 TGTGCCCCCTCCCTGGATCAATATGTGAAGTTCGACGCCGTGAGCGGTGACTACTATCCCATCATCTAC
 TTCAATGACTACTGGAACCTGCAGAAGGACTACTACCCATCAACGAGAGCCTGGCCAGCCTGCCGCTCC
 GCGTCTCCTTCTGCCGCTCTCGCTTGGCGCTGGCAGCTCTATGCTGCCAGAGCACCAGTGGCCCTG
 GAATTCCTGGGTGATGAGTTGTACGAGCAGTCAGATGAGGAGCAGGACTCGGTGAAGGTGGCCCTGCTG
 GAGACCAACCCCTACCTGCTGGCGCTCACCATCATCGTGTCTATCGTTCACAGTGTCTTCGAGTTCCTGG
 CTTCAAGAATGATATCCAGTTCTGGAACAGCCGGCAGTCCCTGGAGGGCCTGTCCGTGGCTCCGTCTT
 CTTGCGGCTTTCCAGTCATTCTGGTCCCTCTCTACATCCTGGACAACGAGACCAACTTCGTGGTCCAG
 GTCAGCGTCTTCATTGGGGTCTCATCGACCTCTGGAAGATCACCAGGTCATGGACGTCGGCTGGACC
 GAGAGCACAGGGTGGCAGGAATCTCCCCGCCTATCCTTCAAGGACAAGTCCACGTATATCGAGTCCCTC
 GACCAAGTGATGATGATATGGCATTCCGGTACCTGTCTGGATCCTCTCCCGCTCTGGGCTGCTAT
 GCCGTCTACAGTCTTCTGTACCTGGAGCACAAGGGCTGGTACTCCTGGGTGCTCAGCATGCTCTACGGCT
 TCCTGCTGACCTTCGGCTTCATCACCATGACGCCCCAGCTCTTCATCAACTACAAGCTCAAGTCTGTGGC
 CCACCTTCCTGGCGCATGCTCACCTACAAGGCCCTCAACACATTCATCGACGACCTGTTGCCTTTGTC
 ATCAAGATGCCGTTATGTACCGGATCGGCTGCCTGCGGGACGATGTGGTTTTTTCATCTACCTCTACC
 AACGGTGGATCTACCGCGTCGACCCACCCGAGTCAACGAGTTTGGCATGAGTGGAGAAGACCCACAGC
 TGCCGCCCCCGTGGCCGAGGTTCCACAGCAGCAGGGGCCCTCACGCCACACCTGCACCCACCAGACC
 ACCGCCACCAGGGAGGAGGCTCCACGTCCCTGCCACCAAGCCACCCAGGGGGCCAGCTCTGCCAGCG
 AGCCCCAGGAAGCCCCTCCAAGCCAGCAGAGGACAAGAAAAAGGAT

AG**CGGACCG**ACGCGTACGCGGCCGCTCGAG - GFP Tag - GTTTAA

Protein Sequence: >RG204270 representing NM_001294
Red=Cloning site Green=Tags(s)

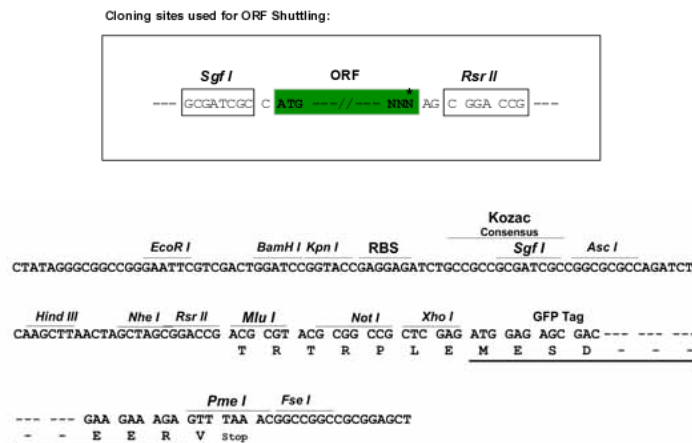
```

MAAAQEADGARS AVVAAGGGSSGQVTSNGS IGRDPPAETQPQNPPAQPAPNAWQVIKGVLFRI FIIWAIS
SWFRRGPAPQDQAGPGGAPRVASRNLFPKDTLMNLHVYI SEHEHFTDFNATSALFWEQHDLVYGDWTSGE
NSDGCYEHAELDIPQSVQQNGSIYIHVYFTKSGFHPDPRQKALYRRLATVHMSRMINKYKRRRFQKTKN
LLTGETEADPEMIKRAEDYGPVEVISHWHPNITINIVDDHTPWVKGSPVPPPLDQYVKFDVAVSGDYYP I IY
FN DYWNLQKDYYPINESLASLPLRVSFCLSLWRWQLYAAQSTKSPWNFLGDELYEQSDEEQDSVKVALL
ETNPYLLALTIIVSIVHSVFEFLAFKNDIQFWNSRQSLEGLSVRSVFFGVFQSFVLLYILDNETNFVVQ
VSVFIGVLIDLWKITKVM DVRLDREHRVAGIFPRLSFKDKSTYIESSTKVYDDMAFRYLSWILFLLGCY
AVYLLYLEHKGWYSWLSMLYGFLLTFGFITMTPQLFINYKLSVAHLPWRMLTYKALNTFIDDLFAFV
IKMPVMYRIGCLRDDVVFFIYLQRWIYRVDPTRVNEFGMSGEDPTAAAPVAEVP TAAGALTPTPAPTTT
TATREEASTSLPTKPTQGASSASEPQEAPPKPAEDKKK
    
```

SGPTRRRLE - GFP Tag - V

Restriction Sites: SgfI-RsrII

Cloning Scheme:



ACCN: NM_001294

ORF Size: 2007 bp

OTI Disclaimer: The molecular sequence of this clone aligns with the gene accession number as a point of reference only. However, individual transcript sequences of the same gene can differ through naturally occurring variations (e.g. polymorphisms), each with its own valid existence. This clone is substantially in agreement with the reference, but a complete review of all prevailing variants is recommended prior to use. [More info](#)

OTI Annotation: This clone was engineered to express the complete ORF with an expression tag. Expression varies depending on the nature of the gene.

Components: The ORF clone is ion-exchange column purified and shipped in a 2D barcoded Matrix tube containing 10ug of transfection-ready, dried plasmid DNA (reconstitute with 100 ul of water).

Reconstitution Method:

1. Centrifuge at 5,000xg for 5min.
2. Carefully open the tube and add 100ul of sterile water to dissolve the DNA.
3. Close the tube and incubate for 10 minutes at room temperature.
4. Briefly vortex the tube and then do a quick spin (less than 5000xg) to concentrate the liquid at the bottom.
5. Store the suspended plasmid at -20°C. The DNA is stable for at least one year from date of shipping when stored at -20°C.

RefSeq: [NM_001294.1](#), [NP_001285.1](#)

RefSeq Size: 2486 bp

RefSeq ORF: 2010 bp

Locus ID: 1209

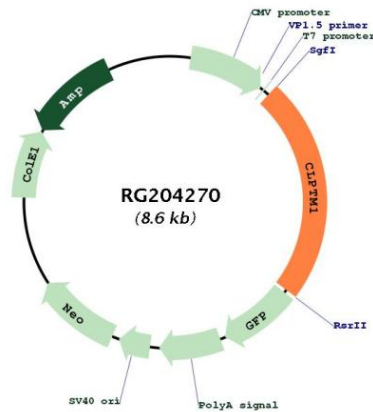
UniProt ID: [O96005](#)

Cytogenetics: 19q13.32

Protein Families: Transmembrane

Gene Summary: May play a role in T-cell development.[UniProtKB/Swiss-Prot Function]

Product images:



Circular map for RG204270