

Product datasheet for **RG204232**

BTN2A2 (NM_006995) Human Tagged ORF Clone

Product data:

Product Type:	Expression Plasmids
Product Name:	BTN2A2 (NM_006995) Human Tagged ORF Clone
Tag:	TurboGFP
Symbol:	BTN2A2
Synonyms:	BT2.2; BTF2; BTN2.2
Mammalian Cell Selection:	Neomycin
Vector:	pCMV6-AC-GFP (PS100010)
E. coli Selection:	Ampicillin (100 ug/mL)



[View online »](#)

ORF Nucleotide Sequence:

>RG204232 representing NM_006995
 Red=Cloning site Blue=ORF Green=Tags(s)

TTTTGTAATACGACTCACTATAGGGCGGCCGGAATTCGTCGACTGGATCCGGTACCGAGGAGATCTGCC
 GCC**CGGATCGCC**

ATGGAACCAGCTGCTGCTGCACTTCTCCCTGCCAGCCTCCCTCCTCCTCCTGCTCCTCCTCCTC
 TCAGCCTGTGTGCACTGGTCTCAGCCCAGTTTACTGTCGTGGGGCCAGCTAATCCCATCCTGGCCATGGT
 GGGAGAAAAACACTACATTACGCTGCCATCTGTACCCGAGAAAAATGCTGAGGACATGGAGGTGCGGTGG
 TTCCGGTCTCAGTTCTCCCCGAGTGTGTGTATAAGGGTGGGAGAGAGAGAACAGAGGAGCAGATGG
 AGGAGTACCGGGGAAGAATCACCTTTGTGAGCAAAGACATCAACAGGGGCAGCGTGGCCCTGGTCATACA
 TAACGTCACAGCCAGGAGAATGGGATCTACCGCTGTTACTTCCAAGAAGGCAGGTCTACGATGAGGCC
 ATCCTACGCCCTCGTGGTGGCAGGCCTTGGGTCTAAGCCCCTCATTGAAATCAAGGCCAAGAGGATGGGA
 GCATCTGGCTGGAGTGCATATCTGGAGGGTGGTACCCAGAGCCCCTCACAGTGTGGAGGGACCCCTACGG
 TGAGGTTGTGCCGCCCTGAAGGAGTTTCCATCGCTGATGCTGACGGCCTTTCATGGTCACCACAGCT
 GTGATCATCAGAGACAAGTATGTGAGGAATGTGTCCTGCTCTGTCAACAACACCCCTGCTCGCCAGGAGA
 AGGAAACTGTCAATTTTATTCCAGAATCCTTTATGCCAGCGCATCTCCCTGGATGGTGGCCCTAGCTGT
 CATCCTGACCGCATCTCCCTGGATGGTGTCCATGACTGTGTCATCCTGGCTGTTTTTCATCATCTTATGGCT
 GTCAGCATCTGTTGCATCAAGAACTTCAAAGGGAAAAAAGATTCTGTGAGGGGAAAAGAAAGTTGAAC
 AAGAGGAAAAAGAAATTCACAGCAACTCAAGAAGAATTGCGATGGAGAAGAACATTCTTACATGCTGC
 TGATGTGGTCTGGATCCAGACACCGCTCATCCGAGCTCTTCTGTGAGGACCGGAGAAGTGTGAGG
 CGGGGCCCTACAGGCAGAGAGTGCCTGACAACCCAGAGAGATTGACAGTCAGCCTTGTGCTGGGAT
 GGGAGAGCTTCGCTCAGGAAACATTACTGGAGGTGGAGGTGGAAAACGTGATGGTGTGGACTGTGGG
 GGTCTGCAGACACAGTGTGAGAGGAAAGGGAGGTCTGCTGATTCTCAGAATGGCTTCTGGACCCTG
 GAGATGTTTGAACAACATACCGGCCCTGTCTCCCTGAGAGGATTCTCCCTTGAAGGAGTCCCTTT
 GCCGGTGGGCGTCTTCTGGACTATGAAGCTGGAGATGTCTCCTTCTACAACATGAGGGACAGATCGCA
 CATCTACACATGTCCCGTTCAGCCTTACTGTGCCTGTGAGGCCCTTCTCAGGTTAGGGTCTGATGAC
 AGCCCCATCTTCTGCTGCACTCACAGGAGCCAGTGGGTCATGGTGCCTGAAGAGGGCCTGAAAC
 TTCACAGAGTGGGACCCACCAGAGCCTA

ACGCGTACGCGGCCGCTCGAG - GFP Tag - GTTTAA

Protein Sequence:

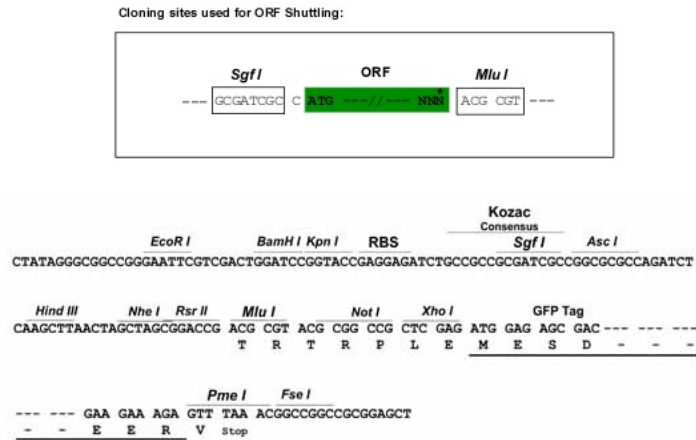
>RG204232 representing NM_006995
 Red=Cloning site Green=Tags(s)

MEPAAALHFLPASLLLLLLLLLLLLSLCALVSAQFTVVGPNPILAMVGENTTLRCHLSPEKNAEDMEVRW
 FRSQFSPAVFVYKGGREERTEEQMEEYRGRITFVSKDINRGSVALVIHNVTAQENGIYRCYFQEGRSYDEA
 ILRLVVAGLGSKPLIEIKAQEDGSIWLECSGGWYPEPLTVWRDPYGEVVPALKEVSIADADGLFMVTTA
 VIIRDKYVRNVSCSVNNTLLGQEKETVIFIPESFMPSPWVALAVILTASPWMVSMTVILAVFIFMA
 VSICCIKKLQREKKILSGEKKVEQEEKEIAQQLQEELRWRRTFLHAADVLDPDTAHPFLFSEDRRSVR
 RGPYRQRPDNPFRFDSQPCVLGWESFASGKHYWEVEVENVMVWTVGVCRHSVERKGEVLLIPQNGFWTL
 EMFGNQYRALSSPERILPLKESLCRVGVFLDYEAGDVSFYNMRRDRSHIYTCPRSAFTVPVRPFRLGSD
 SPIFICPALTGASGVMPEEGLKLRVGVTHQSL

TRTRPLE - GFP Tag - V

Restriction Sites:

Sgfl-MluI

Cloning Scheme:


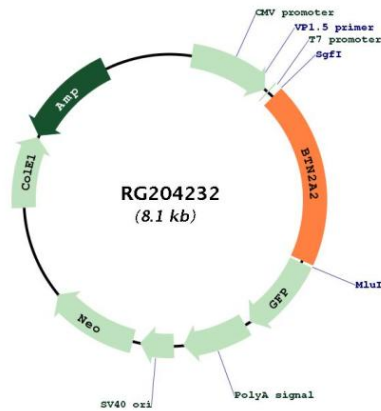
- ACCN:** NM_006995
- ORF Size:** 1569 bp
- OTI Disclaimer:** The molecular sequence of this clone aligns with the gene accession number as a point of reference only. However, individual transcript sequences of the same gene can differ through naturally occurring variations (e.g. polymorphisms), each with its own valid existence. This clone is substantially in agreement with the reference, but a complete review of all prevailing variants is recommended prior to use. [More info](#)
- OTI Annotation:** This clone was engineered to express the complete ORF with an expression tag. Expression varies depending on the nature of the gene.
- Components:** The ORF clone is ion-exchange column purified and shipped in a 2D barcoded Matrix tube containing 10ug of transfection-ready, dried plasmid DNA (reconstitute with 100 ul of water).
- Reconstitution Method:**
1. Centrifuge at 5,000xg for 5min.
 2. Carefully open the tube and add 100ul of sterile water to dissolve the DNA.
 3. Close the tube and incubate for 10 minutes at room temperature.
 4. Briefly vortex the tube and then do a quick spin (less than 5000xg) to concentrate the liquid at the bottom.
 5. Store the suspended plasmid at -20°C. The DNA is stable for at least one year from date of shipping when stored at -20°C.
- RefSeq:** [NM_006995.5](#)
- RefSeq Size:** 3577 bp
- RefSeq ORF:** 1572 bp
- Locus ID:** 10385
- UniProt ID:** [Q8WVV5](#)
- Cytogenetics:** 6p22.2

Domains: IGv, IG, SPRY, PRY

Protein Families: Druggable Genome, Transmembrane

Gene Summary: Butyrophilin is the major protein associated with fat droplets in the milk. This gene is a member of the BTN2 subfamily of genes, which encode proteins belonging to the butyrophilin protein family. The gene is located in a cluster on chromosome 6, consisting of seven genes belonging to the expanding B7/butyrophilin-like group, a subset of the immunoglobulin gene superfamily. The encoded protein is a type I receptor glycoprotein involved in lipid, fatty-acid and sterol metabolism. Several alternatively spliced transcript variants encoding different isoforms have been found for this gene. [provided by RefSeq, Oct 2010]

Product images:



Circular map for RG204232