

Product datasheet for **RG204230**

FGFR4 (NM_002011) Human Tagged ORF Clone

Product data:

Product Type:	Expression Plasmids
Product Name:	FGFR4 (NM_002011) Human Tagged ORF Clone
Tag:	TurboGFP
Symbol:	FGFR4
Synonyms:	CD334; JTK2; TKF
Mammalian Cell Selection:	Neomycin
Vector:	pCMV6-AC-GFP (PS100010)
E. coli Selection:	Ampicillin (100 ug/mL)



[View online »](#)

ORF Nucleotide Sequence:

>RG204230 representing NM_002011
 Red=Cloning site Blue=ORF Green=Tags(s)

TTTTGTAATACGACTCACTATAGGGCGGCCGGAATTCGTCGACTGGATCCGGTACCGAGGAGATCTGCC
 GCC**CGGATCGCC**

ATGCGGCTGCTGCTGGCCCTGTTGGGGTCTGCTGAGTGTGCCTGGCCCTCCAGTCTTGTCCCTGGAGG
 CCTCTGAGGAAGTGGAGCTTGGCCCTGCCTGGCTCCCAGCCTGGAGCAGCAAGAGCAGGAGCTGACAGT
 AGCCCTTGGGCAGCCTGTGCGTCTGTGCTGTGGGCGGGCTGAGCGTGGTGGCCACTGGTACAAGGAGGGC
 AGTCGCTGGCACCTGCTGGCCGTGTACGGGGTGGAGGGCCGCCTAGAGATTGCCAGTCTCTACCTG
 AGGATGCTGGCCGCTACCTCTGCCTGGCACGAGGCTCCATGATCGTCTGCAGAACTCACCTTGATTAC
 AGGTGACTCCTTGACCTCCAGCAACGATGATGAGGACCCCAAGTCCCATAGGGACCCCTCGAATAGGCAC
 AGTTACCCCGCAGCAAGCACCCCTACTGGACACACCCCGAGCGCATGGAGAAGAACTGCATGCAGTACCTG
 CGGGGAACACCGTCAAGTCCGCTGTCCAGCTGCAGGCAACCCCGCCACCATCCGCTGGCTTAAGGA
 TGGACAGGCCTTTCATGGGGAGAACCATTGGAGGCATTGCGCTGCGCCATCAGCACTGGAGTCTCGTG
 ATGGAGAGCGTGGTGCCTCGGACCGCGGCACATACACCTGCCTGGTAGAGAACGCTGTGGGCAGCATCC
 GCTATAACTACCTGCTAGATGTGCTGGAGCGGTCCCCGACCCGGCCCATCTGCAGGCCGGGCTCCCCGGC
 CAACACCACAGCCGTGGTGGGCAGCGAGCTGGAGCTGCTGTGCAAGGTGTACAGCGATGCCAGCCCCAC
 ATCCAGTGGTGAAGCACATCGTCATCAACGGCAGCAGCTTCGGAGCCGACGGTTTCCCCTATGTGCAAG
 TCCTAAAGACTGCAGACATCAATAGCTCAGAGGTGGAGGTCTGTACCTGCGGAACGTGTGAGCCGAGGA
 CGCAGGCGAGTACACCTGCCTCGCAGGCAATCCATCGGCCTCTCTACCAGTCTGCCTGGCTCACGGTG
 CTGCCAGAGGAGGACCCACATGGACCGCAGCAGCGCCGAGGCCAGGTATACGGACATCATCTGTACG
 CGGCGGCTCCCTGGCCTTGGCTGTCTCCTGCTGCTGGCCGGGTGTATCGAGGGCAGGCGCTCCACGG
 CCGGCACCCCGCCCGCCGCACTGTGCAGAAGCTCTCCCGCTTCCCTCTGGCCCGACAGTTCTCCCTG
 GAGTCAGGCTCTTCCGGCAAGTCAAGTCAATCCCTGGTACGAGGCGTGCCTCTCTCTCCAGCGCCCCG
 CCTTGCTCGCCGGCTCGTGAAGTCTAGATCTACCTCTCGACCCACTATGGGAGTCCCCCGGGACAGGCT
 GGTGCTTGGGAAGCCCTAGGCGAGGGCTGCTTTGGCCAGGTAGTACGTGCAGAGGCTTTGGCATGGAC
 CCTGCCCGCCTGACCAAGCCAGCACTGTGGCCGTCAAGATGCTCAAAGACAACGCCTCTGACAAGGACC
 TGGCCGACCTGGTCTCGGAGATGGAGGTGATGAAGCTGATCGGCCGACACAAGAATCATCAACCTGCT
 TGGTGTCTGCACCCAGGAAGGGCCCTGTACGTGATCGTGGAGTGCGCCCAAGGAAACCTGCGGGAG
 TTCTTCCAGTCCCTGGTCTCCTGCGCCTACCAGGTGGCCCGAGGCATGCAGTATCTGGAGTCCCGGAA
 GTGATCCACCGGACCTGGCTGCCCGCAATGTGCTGGTACTGAGGACAATGTGATGAAGATTGCTGAC
 TTTGGGCTGGCCCGCGCGTCCACCACATTGACTACTATAAGAAAACAGCAACGGCCGCTGCCTGTGA
 AGTGGATGGCGCCGAGGCTTGTGTTGACCGGGTGTACACACACCAGAGTACGCTGTGGTCTTTGGGAT
 CCTGCTATGGGAGATCTTCAACCTCGGGGGTCCCCGTATCCTGGCATCCCGGTGGAGGAGCTGTTCTCG
 CTGCTGCGGGAGGACATCGGATGGACCGACCCCACTGCCCCCAGAGCTGTACGGGCTGATGCGTG
 AGTGTGGCACGACGCGCCCTCCAGAGGCTACCTTCAAGCAGCTGGTGGAGGCGCTGGACAAGGTCCT
 GCTGGCCGTCTCTGAGGAGTACCTCGACCTCCGCTGACCTTCGACCCATTCCCCCTCTGGTGGGGAC
 GCCAGCAGCACCTGCTCCTCCAGCGATTCTGTCTTCAGCCACGACCCCTGCCATTGGGATCCAGTCTCT
 TCCCTTCGGGTCTGGGTGCAGACA

AC**CGGCCGCT**CGAG - GFP Tag - GTTTAA

Protein Sequence: >RG204230 representing NM_002011
 Red=Cloning site Green=Tags(s)

```

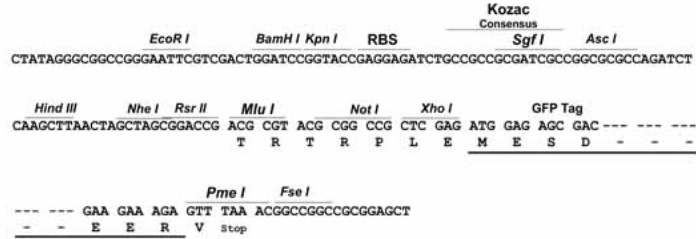
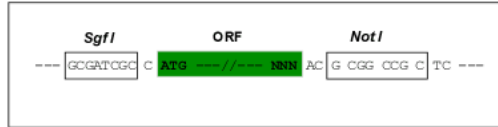
MRLLLALLGVLLSVPGPPVLSEASEEVELEPCLAPSLEQQEQELTVALGQPVRLCCGRAERGGHWYKEG
SRLAPAGRVRGWRGRLEIASFLPEDAGRYLCLARGSMIVLQNLTLITGDSL TSSNDEDPKSHRDP SNRH
SYPQQAPYWTHPQRMEKKLHAVPAGNTVKFRCPAAGNPTPTIRWLKDGQAFHGENRIGGIRLRHQHWSLV
MESVVPSDRGTYTCLVENAVGSIRYNYLLDVLERSPHRPILQAGLPANTTAVVGSDEVLLCKVYSDAQP
IQWLKHI VINGSSFGADGFPYVQLKTADINSSEVEVLYLRNVAEDAGEYTCLAGNSIGLSYQSAWLT
LPEEDPTWTAAP EARYTDIILYASGSLALAVLLLLAGLYRGQALHGRHPRPPATVQKLSRFPLARQFSL
ESGSSGKSSSSLVRGVRLSSSGPALLAGLVSLDPLDPLWEFPRDRLVLGKPLGEGCFGQVVRAEAFGMD
PARPDQASTVAVKMLKDNASDKDLADLVSEMEVMKLI GRHKNIINLLGVCTQEGPLYVIVECAAKGNLRE
FLRARRPPGPDLS PDGPRSSEGPLSFPVLVSCAYQVARGMQYLESRKCIHRDLAARNVLTEDNVMKIAD
FGLARGVHHIDYKKT SNGRLPVKWMPEALFDRVYTHQSDVWSFGILLWEIFTLGGSPYPGIPVEELFS
LLREGHRMDRPPHCPELYGLMRECWAAPSQRPTFKQLVEALDKVLLAVSEEYLDLRLTFGPYSPSGGD
ASSTCSSSDSVF SHDPLPLGSSSFPFGSGVQT
  
```

TRPLE - GFP Tag - V

Restriction Sites: Sgfl-NotI

Cloning Scheme:

Cloning sites used for ORF Shuttling:



ACCN: NM_002011
ORF Size: 2406 bp

OTI Disclaimer: Due to the inherent nature of this plasmid, standard methods to replicate additional amounts of DNA in E. coli are highly likely to result in mutations and/or rearrangements. Therefore, OriGene does not guarantee the capability to replicate this plasmid DNA. Additional amounts of DNA can be purchased from OriGene with batch-specific, full-sequence verification at a reduced cost. Please contact our customer care team at custsupport@origene.com or by calling 301.340.3188 option 3 for pricing and delivery.

The molecular sequence of this clone aligns with the gene accession number as a point of reference only. However, individual transcript sequences of the same gene can differ through naturally occurring variations (e.g. polymorphisms), each with its own valid existence. This clone is substantially in agreement with the reference, but a complete review of all prevailing variants is recommended prior to use. [More info](#)

OTI Annotation: This clone was engineered to express the complete ORF with an expression tag. Expression varies depending on the nature of the gene.

Components: The ORF clone is ion-exchange column purified and shipped in a 2D barcoded Matrix tube containing 10ug of transfection-ready, dried plasmid DNA (reconstitute with 100 ul of water).

Reconstitution Method:

1. Centrifuge at 5,000xg for 5min.
2. Carefully open the tube and add 100ul of sterile water to dissolve the DNA.
3. Close the tube and incubate for 10 minutes at room temperature.
4. Briefly vortex the tube and then do a quick spin (less than 5000xg) to concentrate the liquid at the bottom.
5. Store the suspended plasmid at -20°C. The DNA is stable for at least one year from date of shipping when stored at -20°C.

RefSeq: [NM_002011.5](#)

RefSeq Size: 3040 bp

RefSeq ORF: 2409 bp

Locus ID: 2264

UniProt ID: [P22455](#)

Cytogenetics: 5q35.2

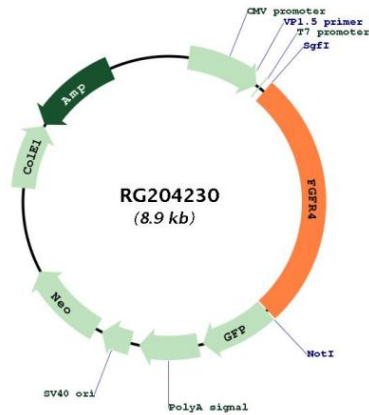
Domains: pkinase, TyrKc, S_TKc, ig, IGc2, IG

Protein Families: Druggable Genome, Protein Kinase

Protein Pathways: Endocytosis, MAPK signaling pathway, Regulation of actin cytoskeleton

Gene Summary:

The protein encoded by this gene is a tyrosine kinase and cell surface receptor for fibroblast growth factors. The encoded protein is involved in the regulation of several pathways, including cell proliferation, cell differentiation, cell migration, lipid metabolism, bile acid biosynthesis, vitamin D metabolism, glucose uptake, and phosphate homeostasis. This protein consists of an extracellular region, composed of three immunoglobulin-like domains, a single hydrophobic membrane-spanning segment, and a cytoplasmic tyrosine kinase domain. The extracellular portion interacts with fibroblast growth factors, setting in motion a cascade of downstream signals, ultimately influencing mitogenesis and differentiation. [provided by RefSeq, Aug 2017]

Product images:


Circular map for RG204230