

Product datasheet for **RG204219**

CCDC97 (NM_052848) Human Tagged ORF Clone

Product data:

Product Type:	Expression Plasmids
Product Name:	CCDC97 (NM_052848) Human Tagged ORF Clone
Tag:	TurboGFP
Symbol:	CCDC97
Mammalian Cell Selection:	Neomycin
Vector:	pCMV6-AC-GFP (PS100010)
E. coli Selection:	Ampicillin (100 ug/mL)
ORF Nucleotide Sequence:	>RG204219 representing NM_052848 Red=Cloning site Blue=ORF Green=Tags(s)

TTTTGTAATACGACTCACTATAGGGCGGCCGGGAATTCGTCGACTGGATCCGGTACCGAGGAGATCTGCCGCC**CGATCGCC**

ATGGAGGCCGTGGCGACGGCGACGGCGGCGAAGGAACCCGATAAGGGCTGCATAGAGCCTGGACCTGGGC
ACTGGGTGAGCTGAGCCGGACACCACTCCCATCTAAACCCAGGACAAAGTGGAAGCAGCTGAGGCAAC
ACCACTGGCCCTGGACAGTGACACCTCCGGGGCTGAAAATGCAGCAGTGAGTGCTATGCTGCACGCTGTA
GCCGCCAGCCGCTGCTGTTTGCAGCCAGCAGCAGGGTGAACCCGACTTGACAGAGCATGAGAAAGTGG
CCATCCTGGCCAGCTGTACCACGAGAAGCCACTGGTGTCTGGAGCGTTCCGCACAGGCCCTCCGTGA
GGAGCATCTGGCCTGCTTTGGCCACGTGCGTGGCGACCACCGTGCAGACTTCTACTGTGCTGAGGTGCC
CGGCAGGGCACTGCCCGGCCCGCACCCCTGCGTACCCGCTGCGTAACCGGCGCTATGCTGCCCTGCGAG
AGCTGATCCAAGGGGGCAGTACTTCACTGATGAGCAGATGCGGTTCCGGGCCCCCTGCTATATGAGCA
GTACATCGGGCAGTATCTCACCCAGGAGGAGCTCAGTGCCCGCACCCCAACCCAGCCCCCAAGCCC
GGGTCCCCGGGAGACCTGCTTGCCTGCTCCAATTGCTGCTCCAGTCTACGAGGAGCGGGAGCTAC
AGCAGCGTCTGCTCAACAGCAGGAGGAGGAGGAGGCTGCTTGGAGGAAGAGGAAGAGGAGGAGGACAG
TGACGAGGAAGACCAGAGGTGAGCAAGGACTCGGAGGCTGGGTTCCCGACTCGGAGGAGAGGCTGATC
CTGCGAGAGGAGTTCACCAGCCGATGCACCAGCGCTTCTAGATGGCAAGGACGGGACTTTGACTACA
GCACAGTAGACGACAACCCGACTTCGACAACCTCGACATCGTGGCACGGGATGAGGAGGAGAGGTA
TGATGAGGAAGAACCTGAGGATGCGCCAGCCAGAGCTGGATGGGGAC

ACGCGTACGCGGCCGCTCGAG - GFP Tag - GTTTAA



[View online »](#)

Protein Sequence: >RG204219 representing NM_052848
Red=Cloning site Green=Tags(s)

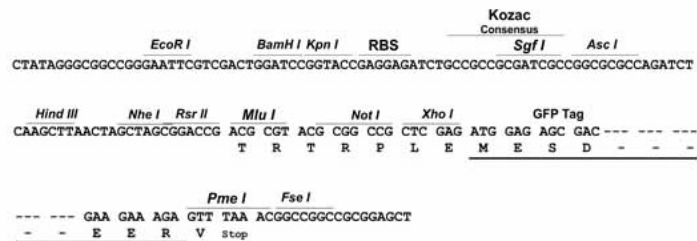
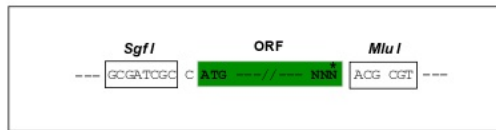
```
MEAVATATAAKEPKGKCIIEPGPGHWGELSRTPVPSKPDQKVEAAEATPVALDSDTSGAENAAVSAMLHAV
AASRLPVCSQQQGEPLTEHEKVAILAQLYHEKPLVFLERFRTGLREEHLACFGHVRGDHRADFCAEVA
RQGTARPRTLRLRLNRRYAALRELIQGGYFSDQMRFRAPLLYEQYIGQYL TQEELSARTPTHQPPKP
GSPGRPACPLSNLLLQSYEERELQORLLQQEEEEEALEEEEEEDSDEEDQRSKGDSEAWYPDSEERLI
LREEFTSRMHQRFLDGKDGDFDYSTVDDNPDFNLDIVARDEEERYFDEEPEPADAPSPELDGD
```

TRTRPLE - GFP Tag - V

Restriction Sites: SgfI-MluI

Cloning Scheme:

Cloning sites used for ORF Shutting:



ACCN: NM_052848

ORF Size: 1029 bp

OTI Disclaimer: The molecular sequence of this clone aligns with the gene accession number as a point of reference only. However, individual transcript sequences of the same gene can differ through naturally occurring variations (e.g. polymorphisms), each with its own valid existence. This clone is substantially in agreement with the reference, but a complete review of all prevailing variants is recommended prior to use. [More info](#)

OTI Annotation: This clone was engineered to express the complete ORF with an expression tag. Expression varies depending on the nature of the gene.

Components: The ORF clone is ion-exchange column purified and shipped in a 2D barcoded Matrix tube containing 10ug of transfection-ready, dried plasmid DNA (reconstitute with 100 ul of water).

Reconstitution Method:

1. Centrifuge at 5,000xg for 5min.
2. Carefully open the tube and add 100ul of sterile water to dissolve the DNA.
3. Close the tube and incubate for 10 minutes at room temperature.
4. Briefly vortex the tube and then do a quick spin (less than 5000xg) to concentrate the liquid at the bottom.
5. Store the suspended plasmid at -20°C. The DNA is stable for at least one year from date of shipping when stored at -20°C.

RefSeq: [NM_052848.3](#)

RefSeq Size: 3344 bp

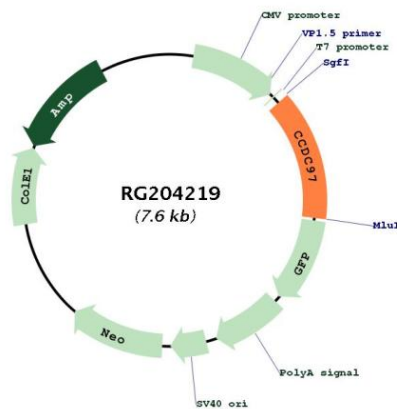
RefSeq ORF: 1032 bp

Locus ID: 90324

UniProt ID: [Q96F63](#)

Cytogenetics: 19q13.2

Product images:



Circular map for RG204219