

Product datasheet for **RG204209**

gamma Catenin (JUP) (NM_002230) Human Tagged ORF Clone

Product data:

Product Type:	Expression Plasmids
Product Name:	gamma Catenin (JUP) (NM_002230) Human Tagged ORF Clone
Tag:	TurboGFP
Symbol:	gamma Catenin
Synonyms:	CTNNG; DP3; DPIII; PDGB; PG; PKGB
Mammalian Cell Selection:	Neomycin
Vector:	pCMV6-AC-GFP (PS100010)
E. coli Selection:	Ampicillin (100 ug/mL)



[View online »](#)

ORF Nucleotide
Sequence:

>RG204209 representing NM_002230
Red=Cloning site Blue=ORF Green=Tags(s)

TTTTGTAATACGACTCACTATAGGGCGGCCGGAATTCGTCGACTGGATCCGGTACCGAGGAGATCTGCC
GCC**CGGATCGCC**

ATGGAGGTGATGAACCTGATGGAGCAGCCTATCAAGTGACTGAGTGGCAGCAGACATACACCTACGACT
CGGGTATCCACTCGGGCGCCAACACCTGCGTGCCCTCCGTCAGCAGCAAGGGCATCATGGAGGAGGATGA
GGCCTGCGGGCGCCAGTACACGCTCAAGAAAACCACTTACACCCAGGGGGTGCCCCAGCCAAAGGT
GACCTGGAGTACCAGATGTCCACAACAGCCAGGGCCAACGGGTGCGGGAGGCCATGTGCCCTGGTGTGT
CAGGCGAGGACAGCTCGCTTCTGCTGGCCACCCAGGTGGAGGGGAGGCCACCAACCTGCAGCGACTGGC
CGAGCCGTCAGCTGCTCAAGTCGGCCATTGTGCATCTCATCACTACCAGGATGATGCCGAGCTGGCC
ACTCGGCCCTGCCGAGCTCACAACTGCTCAACGACGAGGACCCGGTGGTGGTACCAAGCGGCCA
TGATTGTGAACAGCTGTGAAGAAGGAGGCGTCGCGGGGGCCCTGATGGGCTCGCCCCAGCTGGTGGC
CGCTGTGCTGCGTACCATGCAGAATACCAGCGACTGGACACAGCCCGCTGCACCACCAGCATCCTGCAC
AACCTCTCCACACCGGGAGGGGCTGCTCGCCATCTTCAAGTCGGGTGGCATCCCTGCTCTGGTCCGCA
TGCTCAGCTCCCCGTGGAGTCGGTCTGTTCTATGCCATCACACGCTGCACAACCTGCTCCTGTACCA
GGAGGGCGCCAAGATGGCCGTGCGCCTGGCCGACGGGCTGCAAAAGATGGTGGCCCTGCTCAACAAGAAC
AACCCCAAGTTCCCTGGCCATCACACCGACTGCCTGCAGCTCCTGGCCTACGGCAACCAGGAGAGCAAGC
TGATCATCCTGGCCAATGGTGGGCCCCAGGCCCTCGTGCAGATCATGCGTAACTACAGTTATGAAAAGCT
GCTCTGGACCACAGTCGTGTGCTCAAGGTGCTATCCGTGTGCCAGCAATAAGCCTGCCATTGTGGAG
GCTGGTGGGATGCAGGCCCTGGGAAGCACCTGACCAGCAACAGCCCCCGCTGGTGCAGAACTGCCTGT
GGACCTGCGCAACCTCTCAGATGTGGCCACCAAGCAGGAGGGCCTGGAGAGTGTGCTGAAGATTCTGGT
GAATCAGCTGAGTGTGGATGACGTCAACGTCCTCACCTGTGCCACGGGCACACTCTCAACCTGACATGC
AACAAACAGCAAGAACAAGACGCTGGTGACACAGAACAGCGGTGTGGAGGCTCTCATCCATGCCATCCTGC
GTGCTGGTGACAAGGACGACATCACGGAGCCTGCCGTCTGCGCTCTGCGCCACCTCACTAGCCGCCACCC
TGAGGGCCGAGATGGCCCAGAACTCTGTGCGTCTCAACTATGGCATCCCAGCCATCGTGAAGCTGCTCAAC
CAGCCCAACCAGTGGCCACTGGTCAAGGCAACCATCGGCTTGATCAGGAATCTGGCCCTGTGCCAGCCA
ACCATGCCCGCTGCAGGAGGCAGCGGTACCCCCGCTCGTCCAACCTGCTGGTGAAGGCCACCAGGA
TGCCAGCGCCACGTAGCTGCAGGCACACAGCAGCCCTACACGGATGGTGTGAGGATGGAGGAGATTGTG
GAGGGCTGCACCGGAGCACTGCACATCCTCGCCGGGACCCCATGAACCGCATGGAGATCTCCGGCTCA
ACACCATTCCCCTGTTTGTGCAGCTCCTGTACTCGTGGTGGAGAACATCCAGCGCGTGGCTGCCGGGGT
GCTGTGTGAGCTGGCCCAGGACAAGGAGGCGGCCGACGCCATTGATGCAGAGGGGGCCTCGGCCCACTC
ATGGAGTTGCTGCACTCCCGCAACGAGGGCACTGCCACCTACGCTGCTGCCGTCTGTTCCGCATCTCCG
AGGACAAGAACCAGACTACCGAAGCGCGTGTCCGTGGAGCTCACCAACTCCCTCTTCAAGCATGACCC
GGCTGCCCTGGGAGGCTGCCAGAGCATGATTCCCATCAATGAGCCCTATGGAGATGACTTGGATGCCACC
TACCGCCCATGTACTCCAGCGATGTGCCCTTGACCCGCTGGAGATGCACATGGACATGGATGGAGACT
ACCCATCGACACCTACAGCGACGGCCTCAGGCCCCCGTACCCCACTGCAGACCACATGCTGGCC

ACGCGTACGCGGCCGCTCGAG - GFP Tag - GTTTAA

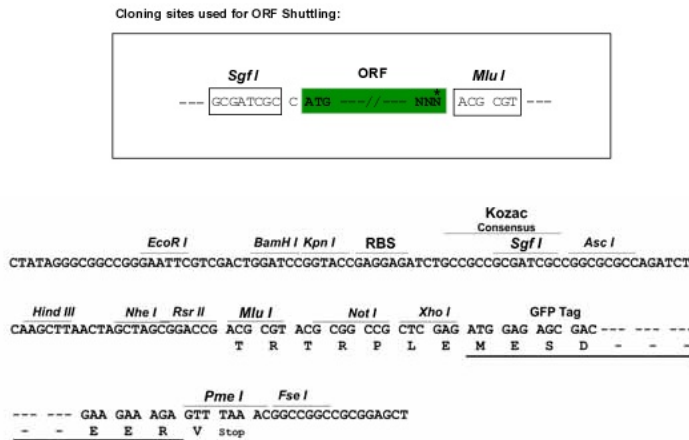
Protein Sequence: >RG204209 representing NM_002230
 Red=Cloning site Green=Tags(s)

```
MEVMNLMEQPIKVTWEQQTYTYDSGIHSGANTCVPSVSSKGIMEEDEACGRQYTLKKTTTYTQGVPPSQG
DLEYQMSTTARAKRVREAMCPGVSGEDSSLLLATQVEGQATNLQRLAEPSSLKSAIVHLINYQDDAELA
TRALPELTKLLNDEDPVVVTKAAMIVNQLSKKEASRRALMGSPQLVAAVVRTMQNTSDLTARCTTSILH
NLSHHREGLLAIFKSGGIPALVRMLSSPVESVLFYAITTLHNLLLYQEGAKMAVRLADGLQKMPVLLNKN
NPKFLAITDCLQLLAYGNQESKLIILANGGPQALVQIMRNYSEKLLWTTSRVLKVLVSVCP SNKPAIVE
AGGMQALGKHLTSNSPRLVQNCLWTLRNLSDVATKQEGLESVLKILVNQLSVDDVNVLTCA GTLSNLTC
NNSKNKTLVTQNSGVEALIHAILRAGDKDDITEPAVCALRHLTSRHEAEMAQNSVRLNYGIPAIVKLLN
QPQWPLVKATIGLIRNLALCPANHAPLQEA AVIPRLVQLLVKAHQDAQRHVAAGTQQPYTDGVRMEEIV
EGCTGALHILARDPMMRMEIFRLNTIPLFVQLLYSSVENIQRVAAGVLC ELAQDKEAADAIDAEGASAPL
MELLHSRNEGATYAAAVLFRISEDKNPDYRKRVSVELTNSL FKHDPAAWAAQSMIPINEPYGDDLDAT
YRPMYSSDVPLDPLEMHMDMDGDYPIDTYS DGLRPPYPTADHMLA
```

TRTRPLE - GFP Tag - V

Restriction Sites: SgfI-MluI

Cloning Scheme:



ACCN: NM_002230

ORF Size: 2235 bp

OTI Disclaimer: The molecular sequence of this clone aligns with the gene accession number as a point of reference only. However, individual transcript sequences of the same gene can differ through naturally occurring variations (e.g. polymorphisms), each with its own valid existence. This clone is substantially in agreement with the reference, but a complete review of all prevailing variants is recommended prior to use. [More info](#)

OTI Annotation: This clone was engineered to express the complete ORF with an expression tag. Expression varies depending on the nature of the gene.

Components: The ORF clone is ion-exchange column purified and shipped in a 2D barcoded Matrix tube containing 10ug of transfection-ready, dried plasmid DNA (reconstitute with 100 ul of water).

Reconstitution Method:

1. Centrifuge at 5,000xg for 5min.
2. Carefully open the tube and add 100ul of sterile water to dissolve the DNA.
3. Close the tube and incubate for 10 minutes at room temperature.
4. Briefly vortex the tube and then do a quick spin (less than 5000xg) to concentrate the liquid at the bottom.
5. Store the suspended plasmid at -20°C. The DNA is stable for at least one year from date of shipping when stored at -20°C.

RefSeq: [NM_002230.1](#), [NP_002221.1](#)

RefSeq Size: 3490 bp

RefSeq ORF: 2238 bp

Locus ID: 3728

UniProt ID: [P14923](#)

Cytogenetics: 17q21.2

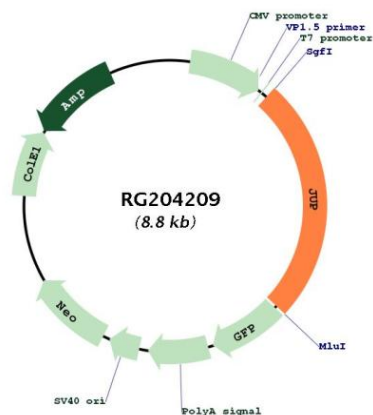
Domains: Armadillo_seg

Protein Families: Druggable Genome

Protein Pathways: Acute myeloid leukemia, Arrhythmogenic right ventricular cardiomyopathy (ARVC), Pathways in cancer

Gene Summary: This gene encodes a major cytoplasmic protein which is the only known constituent common to submembranous plaques of both desmosomes and intermediate junctions. This protein forms distinct complexes with cadherins and desmosomal cadherins and is a member of the catenin family since it contains a distinct repeating amino acid motif called the armadillo repeat. Mutation in this gene has been associated with Naxos disease. Alternative splicing occurs in this gene; however, not all transcripts have been fully described. [provided by RefSeq, Jul 2008]

Product images:



Circular map for RG204209