

## Product datasheet for **RG204201**

### **RHBDF1 (NM\_022450) Human Tagged ORF Clone**

#### **Product data:**

Product Type:	Expression Plasmids
Product Name:	RHBDF1 (NM_022450) Human Tagged ORF Clone
Tag:	TurboGFP
Symbol:	RHBDF1
Synonyms:	C16orf8; Dist1; EGFR-RS; gene-89; gene-90; hDist1
Mammalian Cell Selection:	Neomycin
Vector:	pCMV6-AC-GFP (PS100010)
E. coli Selection:	Ampicillin (100 ug/mL)



[View online »](#)

**ORF Nucleotide Sequence:**

>RG204201 representing NM\_022450  
 Red=Cloning site Blue=ORF Green=Tags(s)

TTTTGTAATACGACTCACTATAGGGCGGCCGGGAATTCGTCGACTGGATCCGGTACCGAGGAGATCTGCC  
 GCC**CGGATCGCC**

ATGAGTGAGGCCCGCAGGGACAGCACGAGCAGCCTGCAGCGCAAGAAGCCACCCTGGCTAAAGCTGGACA  
 TTCCTCTGCGGTGCCCTGACGGCAGAAGAGCCAGCTTCTGCAGCCCTGAGGCGACAGGCTTTCCT  
 GAGGAGTGTGAGTATGCCAGCCGAGACAGCCACATCTTCCACCCACCATGAGCTCCGGCGGCCGGTG  
 CTGCAACGCCAGACGTCCATCACACAGACCATCCGCAGGGGGACCGCCGACTGGTTTGGAGTGAGCAAGG  
 ACAGTGACAGCACCCAGAAATGGCAGCGCAAGAGCATCCGTACTGCAGCCAGCGCTACGGGAAGCTGAA  
 GCCCAGGTCTCCGGGAGCTGGACCTGCCAGCCAGGACAACGTGTGCTGACCAGCACCGAGACGCCA  
 CCCCCACTCTACGTGGGGCCATGCCAGCTGGGCATGCAGAAGATCATAGACCCCTGGCCGTGGCCGTG  
 CCTTCCGTGTGGCAGATGACACTGCGGAAGGCCGTGAGTGCCCCACACACTCCCGTACGCCGGGTGCTGC  
 CTCCTCTGCTCCTTCTCCAGCTCCCGCTCAGGTTTCCACGGCTCCCGCGGCCGGCAAGCGAGAGTGC  
 GTGGCCAAAGATGAGCTTCCGGGGCGCCGACGCGCTGATGAAAGGCCGCTCCGTTAGGGATGGCACCTTC  
 GCCGGGACGGCTCGAAGCTTCACTCCAGCTAGCTTCTGGAGGAGGACACAATGATTTCCCCGATGA  
 GCTGGACACATCCTTCTTGGCCGGGAAGGTATCCTCCATGAAGAGCTGTCCACATACCCGGATGAAGTT  
 TTCGAGTCCCCATCGGAGGCAGCGCTAAAGGACTGGGAGAAGGCACCGGAGCAGGCGGACCTCACCGGG  
 GGGCCCTGGACCGCAGCGAGCTTGGAGCGAGCCACCTGATGCTGCCCTTGGAGCGAGGCTGGCGGAAGCA  
 GAAGGAGGGCGCCGACGCCCCGACGCCAAGGTGCGGCTCCGACAGGAGGTGGTGAACCGCGGGGCCG  
 CGACGGGGCCAGCGTATCGCGGTGCCGTGCGCAAGCTTTCGCCGGGAGAAGCGGCCGTATGGGCTGG  
 GCATGGTGGGACGGCTCACCAACCGCACCTACCGCAAGCGCATCGACAGCTTTCGTAAGCGCCAGATCGA  
 GGACATGGACGACCACAGGCCCTTCTTCACTACTGGCTTACCTTCGTGCACTCGCTCGTACCATTCTTA  
 GCCGTGTGCATCTATGGCATCGGCCCGTGGGCTTCTCGCAGCATGAGACGGTGGACTCGGTGCTGCGGA  
 ACCGCGGGGTCTACGAGAAGCTCAAGTACGTGCAGCAGGAGAAGTCTGGATCGGGCCAGCTCGGAGGC  
 CCTCATCCACCTGGGCGCAAGTTTTCGCCCTGCATGCGCCAGGACCCGAGGTGCACAGCTTATTTCGC  
 TCGGCGCGGAGCGGAGAAGCACTCCGCTGCTGCGTGCACAACGACAGGTCCGGCTGCGTGCAGACCT  
 CGGAGGAGGAGTGTCTCCACGCTGGCAGTGTGGGTGAAGTGGCCATCCATCCAGCGCCCCAGAGCT  
 TGCGGGCCACAAGAGACAGTTTGGCTCTGTCTGCCACCAGGATCCAGGGTGTGTGATGAGCCCTCTCC  
 GAAGACCTCATGAGTGGCCAGAAGACATACCAAGTGGCCGATCTGCACAAAAACAGCGCTGGGAACC  
 ACACCAACCATCCCACATGGACTGTGTATCACAGGACGGCCCTGCTGCATTGGACCAAGGGCAGGTG  
 TGAGATCACTCCCGGGAGTACTGTGACTTATGAGGGGCTACTTCCATGAGGAGGCCACGCTCTGCTCT  
 CAGGTGCACTGCATGGATGATGTGTGGGCTCCTGCCTTTTCTCAACCCGAGGTGCCTGACCAGTTCT  
 ACCGCCTGTGGCTATCCCTTCTTCTGCACGCCGGGATCTTGCAGTGCCTGGTGTCCATCTGCTTCCAGAT  
 GACTGTCTGCGGGACCTGGAGAAGCTGGCAGGCTGGCACCGCATAGCCATCATCTACCTGCTGAGTGGT  
 GTCACCGGCAACCTGGCCAGTGCATCTTCTGCCATACCGAGCAGAGGTGGGCTCCTGCTGGCTCCCAGT  
 TCGGCATCCTGGCTGCCTTCTCGTGGAGCTCTCCAGAGCTGGCAGATCCTGGCGGCCCTGGCGTGC  
 CTTCTTCAAGCTGCTGGCTGTGGTGTCTTCTCTTCACTTTGGGCTGCTGCCGTGGATTGACAACCTTT  
 GCCACATCTCGGGTTTCATCAGTGGCCTTCTCCTCCTTCCCTTTCGCTTCTTGGCCTACATCAGCTTTGGCA  
 AGTTTCAGCTGTACCGAAACGCTGCCAGATCATCATTTTCAGGTGGTCTTCTGGGCCTCCTGGCTGG  
 CCTGGTGGTCTTCTACGTCTATCCTGTCCGCTGTGAGTGGTGTGAGTTCTCACCTGCATCCCTTCC  
 ACTGACAAGTTCTGTGAGAAGTACGAAGTGGACGCTCAGCTCCAC

**ACGCGT**ACGCGGCCGCTCGAG – GFP Tag – GTTTAA

**Protein Sequence:** >RG204201 representing NM\_022450  
 Red=Cloning site Green=Tags(s)

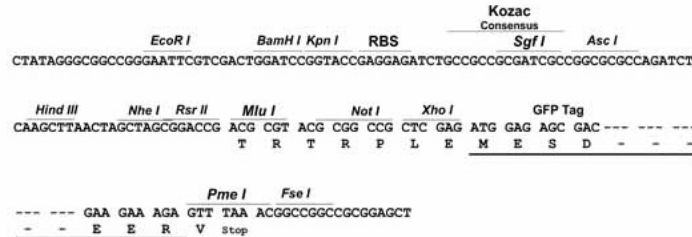
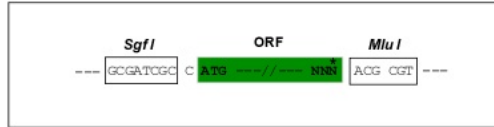
```
MSEARRDSTSSLQRKPPWLKLDIPSAVPLTAEEPSFLQPLRRQAFRLRSVSMPTAHISSPHHELRRPV
LQRQTSITQTIRRGADWFGVSKDSDSTQKWQRKSIRHCSQRYGKLPQVLRDLPSQDNVSLTSTETP
PPLYVGPCQLGMQKIIDPLARGRAFRVADDTAEGLSAPHTPVTPGAASLCSFSSSRSGFHRLPRRRKRES
VAKMSFRAAAAALMKGRSVRDGTFRRARRRSFTPASFLEEDTTDFPDELDTFFFAREGILHEELSTYPDEV
FESPSEAALKDWEKAPEQADLTGGALDRSELERSHLMLPLERGWKQKEGAAAPQPKVRLRQEVVSTAGP
RRGQRIAVPVRKLFAREKRPYGLGMVGRLTNRTYRKRIDSFVKRQIEDMDDHRPFFTYWLTFFVHSLVTIL
AVCIYGIAPVGFSGHETVDSVLRNRGVYENVKYVQENFWIGPSSEAL IHLGAKFSPCMRQDPQVHSFIR
SAREREKHSACCVNRDRSGCVQTSEEECSSTLAVVWKWPIHPSAPELAGHKRQFGSVCHQDPRVCDEPSS
EDPHEWPEDITKWP ICTKNSAGNHTNHPHMDCVITGRPCCIGTKGRCEITSREYCDFMRGYFHHEATLCS
QVHCMDVCGLLPFLNPEVPDQFYRLWLSLFLHAGILHCLVSI CFQMTVLRDLEKLAGWHRIAI IYLLSG
VTGNLASAIFLPYRAEVPAGSQFGILACLVELFQSWQILARPWRAFFKLLAVVLF LFTFGLLPWIDNF
AHISGFI SGLFLSFAFLPYISFGKFDLYRKRCQIIIFQVVFLGLLAGLVVLFYVYPVRCEWCEFLTCIPF
TDFKCEKYELDAQLH
```

TRTRPLE - GFP Tag - V

**Restriction Sites:** Sgfl-MluI

**Cloning Scheme:**

Cloning sites used for ORF Shutting:



**ACCN:** NM\_022450

**ORF Size:** 2565 bp

**OTI Disclaimer:** The molecular sequence of this clone aligns with the gene accession number as a point of reference only. However, individual transcript sequences of the same gene can differ through naturally occurring variations (e.g. polymorphisms), each with its own valid existence. This clone is substantially in agreement with the reference, but a complete review of all prevailing variants is recommended prior to use. [More info](#)

**OTI Annotation:** This clone was engineered to express the complete ORF with an expression tag. Expression varies depending on the nature of the gene.

**Components:** The ORF clone is ion-exchange column purified and shipped in a 2D barcoded Matrix tube containing 10ug of transfection-ready, dried plasmid DNA (reconstitute with 100 ul of water).

**Reconstitution Method:**

1. Centrifuge at 5,000xg for 5min.
2. Carefully open the tube and add 100ul of sterile water to dissolve the DNA.
3. Close the tube and incubate for 10 minutes at room temperature.
4. Briefly vortex the tube and then do a quick spin (less than 5000xg) to concentrate the liquid at the bottom.
5. Store the suspended plasmid at -20°C. The DNA is stable for at least one year from date of shipping when stored at -20°C.

**RefSeq:** [NM\\_022450.2](#), [NP\\_071895.2](#)

**RefSeq Size:** 3053 bp

**RefSeq ORF:** 2568 bp

**Locus ID:** 64285

**UniProt ID:** [Q96CC6](#)

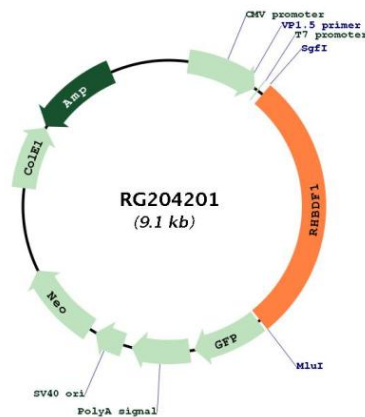
**Cytogenetics:** 16p13.3

**Domains:** Rhomboid

**Protein Families:** Druggable Genome, Protease, Transmembrane

**Gene Summary:** Regulates ADAM17 protease, a sheddase of the epidermal growth factor (EGF) receptor ligands and TNF, thereby plays a role in sleep, cell survival, proliferation, migration and inflammation. Does not exhibit any protease activity on its own.[UniProtKB/Swiss-Prot Function]

### Product images:



Circular map for RG204201