

Product datasheet for **RG204193**

Integrin beta 7 (ITGB7) (NM_000889) Human Tagged ORF Clone

Product data:

Product Type:	Expression Plasmids
Product Name:	Integrin beta 7 (ITGB7) (NM_000889) Human Tagged ORF Clone
Tag:	TurboGFP
Symbol:	Integrin beta 7
Mammalian Cell Selection:	Neomycin
Vector:	pCMV6-AC-GFP (PS100010)
E. coli Selection:	Ampicillin (100 ug/mL)



[View online »](#)

ORF Nucleotide Sequence:

>RG204193 representing NM_000889
 Red=Cloning site Blue=ORF Green=Tags(s)

TTTTGTAATACGACTCACTATAGGGCGGCCGGGAATTCGTCGACTGGATCCGGTACCGAGGAGATCTGCC
 GCC**CGGATCGCC**

ATGGTGGCTTTGCCAATGGTCCTTGTGTTTGTCTGCTGGTCTGAGCAGAGGTGAGAGTGAATTGGACGCCA
 AGATCCCATCCACAGGGGATGCCACAGAATGGCGGAATCCTCACCTGTCCATGCTGGGGTCTGCCAGCC
 AGCCCCCTCCTGCCAGAAGTGCATCCTCTCACACCCAGCTGTGCATGGTGCAAGCAACTGAACTTCACC
 GCGTCGGGAGAGGCGGAGGCGCGGCGCTGCGCCCGACGAGAGGAGCTGCTGGCTCGAGGCTGCCCGCTGG
 AGGAGCTGGAGGAGCCCCGCGGCCAGCAGGAGGTGCTGCAGGACCAGCCGCTCAGCCAGGGCGCCCGCGG
 AGAGGGTGCCACCCAGCTGGCGCCGACGCGGTCCGGGTACGCTGCGGCCTGGGAGCCCCAGCAGCTC
 CAGGTCGCTTTCCTGCTGAGGGATACCCGGTGGACCTGTACTACCTTATGGACCTGAGCTACTCCA
 TGAAGGACGACCTGGAACGCGTGCAGCTCGGGCAGCTCTGCTGGTCCGGCTGCAGGAAGTCAACCA
 TTCTGTGCGCATTGGTTTTGGTTCTTTGTGGACAAAACGGTGTGCCCTTTGTGAGCACAGTACCTCC
 AAAGTGGCCACCCCTGCCACCCGGCTGGAGCGCTGCCAGTACCACTTCAGCTTTCACCATGTGCTGT
 CCCTGACGGGGACGCACAAGCCTTCGAGCGGGAGGTGGGGCGCCAGAGTGTGTCGGCAATCTGGACTC
 GCCTGAAGGTGGCTTCGATGCCATTCTGCAGGCTGCACCTGCCAGGAGCAGATTGGCTGGAGAAATGTG
 TCCCGGCTGCTGGTGTCACTTCAGACGACACATTCATACAGCTGGGGACGGGAAGTTGGGCGGCATTT
 TCATGCCAGTGATGGGCACTGCCACTTGGACAGCAATGGCCTCTACAGTCGACAGCACAGAGTTTGACTA
 CCCTTCTGTGGGTGAGTACCCAGGCCCTCTCTGCAGCAAATATCCAGCCATCTTTGCTGTACCAGT
 GCCGCACTGCCTGTCTACCAGGAGCTGAGTAACTGATTCCTAAGTCTGCAGTTGGGAGCTGAGTGAGG
 ACTCCAGCAACGTGGTACAGCTCATCGATGCTTATAATAGCCTGTCTTCCACCGTGACCTTGAACA
 CTCTTCACTCCCTCCTGGGTCCACATTTCTTACGAATCCAGTGTGAGGGTCTGAGAAGAGGGAGGGT
 AAGGCTGAGGATCGAGGACAGTGAACACGTCGAATCAACAGACGGTACTTTCTGGTTTTCTCTCC
 AAGCCACCCACTGCCTCCAGAGCCCCATCTCTGAGGCTCCGGGCCCTGGCTTCTCAGAGGAGCTGAT
 TGTGGAGTTGCACACGCTGTGTGACTGTAATTGCAGTGACACCCAGCCAGGCTCCCACTGCAGTGAT
 GGCCAGGGACACCTACAATGTGGTGTATGCAGCTGTGCCCTGGCCGCTAGGTCGGCTCTGTGAGTGCT
 CTGTGGCAGAGCTGTCTCCAGACCTGGAATCTGGGTGCCGGGCTCCCAATGGCACAGGGCCCTGTG
 CAGTGGAAAGGGTCACTGTCAATGTGGACGCTGCAGCTGCAGTGGACAGAGCTCTGGGCATCTGTGCGAG
 TGTGACGATGCCAGCTGTGAGCGACATGAGGGCATCCTCTGCGGAGGCTTTGGTCTGCTGCCAATGTGGAG
 TATGTCACTGTATGCCAACCGCACGGGACAGCATGCGAATGCAGTGGGGACATGGACAGTTGCATCAG
 TCCCGAGGGAGGGCTCTGCAGTGGGCATGGACGCTGCAAATGCAACCGCTGCCAGTGCTTGACGGCTAC
 TATGGTGTCTATGCGACCAATGCCAGGCTGCAAGACACCATGCGAGAGACACCGGGACTGTGCAGAGT
 GTGGGGCCTTCAGGACTGGCCACTGGCCACCAACTGCAGTACAGCTTGTGCCATACCAATGTGACCCCT
 GGCCTTGGCCCTATCTTGGATGATGGCTGGTGCAAGAGCGGACCCTGGACAACCAGCTGTTCTTCTTC
 TTGGTGGAGGATGACGCCAGAGGCACGGTCTGCTCAGAGTGAGACCCCAAGAAAAGGGAGCAGACCACA
 CGCAGGCCATTGTGCTGGGCTGCGTAGGGGGCATCGTGGCAGTGGGGCTGGGGCTGGTCTTGCTTACCG
 GCTCTCGGTGAAATCTATGACCGCCGGGAATACAGTCGCTTTGAGAAGGAGCAGCAACAACCTCAACTGG
 AAGCAGGACAGTAATCCTCTCTACAAAAGTGCCATCACACCACCATCAATCCTCGCTTTCAGAGGCGAG
 ACAGTCCCACTCTC

AG**CGGACCG**ACGCGTACGCGGCCGCTCGAG - GFP Tag - GTTTAA

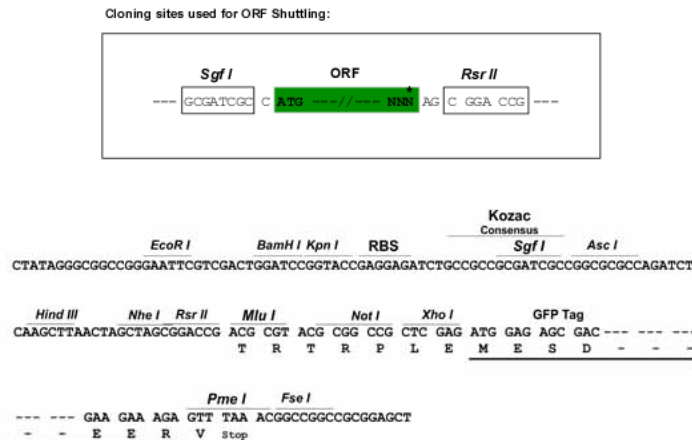
Protein Sequence: >RG204193 representing NM_000889
Red=Cloning site Green=Tags(s)

```
MVALPMVLVLLLVL SRGESELDKIPSTGDATEWRNPHLSMLGSCQPAPSCQKCILSHPSCAWCKQLNFT
ASGEAEARRCARREELLARGCPLLEELPRGQEVLDQDPLSQGARGEGATQLAPQRVRTL RPGEPOQL
QVRFLRAEGYPVDLYLMDLSYSMKDDLRLVRLQGHALLVRLQEVTHSVRIGFGSFVDKTVLPFVSTVPS
KLRHPCPTRLERCQSPFSFHVLSLTGDAQAFEREVGRQSVSGNLDSPGGFDAILQAALCQEIQIGWRNV
SRLLVFTSDDTFHTAGDGKLGIFMPSDGHCHLDSNGLYSRSTEFDYPVSGVQAQALSAANIQPIFAVTS
AALPVYQELSKLIPKSAVGELEDSSNVVQLIMDAYNSLSSTVTLEHSSLPPGVHISYESQCEGPEKREG
KAEDRGQCNHVRINQTVTFWVSLQATHCLPEPHLLRLRALGFSEELIVELHTLDCNCSDTQPAPHCS
DGGHLCQVCSCAPGRLGRLCECSVAELSSPDLESGCRAPNGTGPLCSGKGHCQCGRCSGQSSGHLCE
CDDASCRHEGILCGGFGRCQCGVCHCHANRTGRACECSGMDSCISPEGGLCSGHGRCKNRCQCLDGY
YGALCDQCPGCKTPCERHRDCAECGAFRTGPLATNCSTACAHTNVTALAPILDDGWCKERTLDNQLFFF
LVEDDARGTVVLRVPRQEKGADHTQAIIVLGCVGGIVAVGLGLVLAAYRLSVEIYDRREYSRFEKEQQQLNW
KQDSNPLYKSAITTTINPRFQEADSPTL
```

SGPTRRRLE - GFP Tag - V

Restriction Sites: SgfI-RsrII

Cloning Scheme:



ACCN: NM_000889

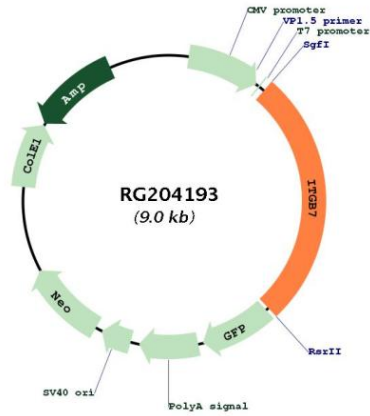
ORF Size: 2394 bp

OTI Disclaimer: The molecular sequence of this clone aligns with the gene accession number as a point of reference only. However, individual transcript sequences of the same gene can differ through naturally occurring variations (e.g. polymorphisms), each with its own valid existence. This clone is substantially in agreement with the reference, but a complete review of all prevailing variants is recommended prior to use. [More info](#)

OTI Annotation: This clone was engineered to express the complete ORF with an expression tag. Expression varies depending on the nature of the gene.

Components:	The ORF clone is ion-exchange column purified and shipped in a 2D barcoded Matrix tube containing 10ug of transfection-ready, dried plasmid DNA (reconstitute with 100 ul of water).
Reconstitution Method:	<ol style="list-style-type: none">1. Centrifuge at 5,000xg for 5min.2. Carefully open the tube and add 100ul of sterile water to dissolve the DNA.3. Close the tube and incubate for 10 minutes at room temperature.4. Briefly vortex the tube and then do a quick spin (less than 5000xg) to concentrate the liquid at the bottom.5. Store the suspended plasmid at -20°C. The DNA is stable for at least one year from date of shipping when stored at -20°C.
RefSeq:	NM_000889.3
RefSeq Size:	2798 bp
RefSeq ORF:	2397 bp
Locus ID:	3695
UniProt ID:	P26010
Cytogenetics:	12q13.13
Domains:	INB, PSI
Protein Families:	Druggable Genome, Transmembrane
Protein Pathways:	Arrhythmogenic right ventricular cardiomyopathy (ARVC), Cell adhesion molecules (CAMs), Dilated cardiomyopathy, ECM-receptor interaction, Focal adhesion, Hypertrophic cardiomyopathy (HCM), Regulation of actin cytoskeleton
Gene Summary:	This gene encodes a protein that is a member of the integrin superfamily. Members of this family are adhesion receptors that function in signaling from the extracellular matrix to the cell. Integrins are heterodimeric integral membrane proteins composed of an alpha chain and a beta chain. The encoded protein forms dimers with an alpha4 chain or an alphaE chain and plays a role in leukocyte adhesion. Dimerization with alpha4 forms a homing receptor for migration of lymphocytes to the intestinal mucosa and Peyer's patches. Dimerization with alphaE permits binding to the ligand epithelial cadherin, a calcium-dependent adhesion molecule. Alternate splicing results in multiple transcript variants. Additional alternatively spliced transcript variants of this gene have been described, but their full-length nature is not known. [provided by RefSeq, Sep 2013]

Product images:



Circular map for RG204193