

Product datasheet for **RG204178**

GNB2 (NM_005273) Human Tagged ORF Clone

Product data:

Product Type:	Expression Plasmids
Product Name:	GNB2 (NM_005273) Human Tagged ORF Clone
Tag:	TurboGFP
Symbol:	GNB2
Mammalian Cell Selection:	Neomycin
Vector:	pCMV6-AC-GFP (PS100010)
E. coli Selection:	Ampicillin (100 ug/mL)
ORF Nucleotide Sequence:	>RG204178 representing NM_005273 Red=Cloning site Blue=ORF Green=Tags(s)

TTTTGTAATACGACTCACTATAGGGCGGCCGGAATTCGTCGACTGGATCCGGTACCGAGGAGATCTGCC
GCC**CGATCGCC**

ATGAGTGAGCTGGAGCAACTGAGACAGGAGGCCGAGCAGCTCCGGAACCAGATCCGGGATGCCCGAAAAG
CATGTGGGGACTCAACTGACCCAGATCACAGCTGGGCTGGACCCAGTGGGGAGAATCCAGATGAGGAC
CCGGAGGACCCCTCCGTGGGCACCTGGCAAAGATCTATGCCATGCACTGGGGACCGACTCAAGGCTGCTG
GTCAGCGCCTCCCAGGATGGGAAGCTCATCATCTGGGACAGCTACACCACCAACAAGTCCACGCCATCC
CGCTGCCTCCTCTGGTAATGACCTGTGCTACGCGCCCTCAGGGAACCTTTGTGGCCTGTGGGGGTT
GGACAACATCTGCTCCATCTACAGCCTCAAGACCCGCGAGGGCAACGTCAGGGTACGCGGGAGCTGCCT
GGCCACACTGGGTACCTGTCGTGTTGCCGCTTCCTGGATGACAACCAAATCATCACCAGCTCTGGGGATA
CCACCTGTGCCCTGTGGGACATTGAGACAGGCCAGCAGACAGTGGGTTTTGCTGGACACAGTGGGGATGT
GATGTCCCTGTCCCTGGCCCCGATGGCCGCACGTTTGTGTCAGGCGCCTGTGATGCCTCTATCAAGCTG
TGGGACGTGCGGGATTCCATGTGCCGACAGACCTTCATCGGCCATGAATCCGACATCAATGCAGTGGCTT
TCTTCCCCAACGGCTACGCCTTACCACCGGCTCTGACGACGCCACGTGCCGCTCTTCGACCTGCGGGC
CGATCAGGAGCTCCTCATGTACTCCCATGACAACATCATCTGTGGCATCACCTCTGTTGCCCTCTCGCGC
AGCGGACGGCTGCTGCTCGCTGGCTACGACGACTTCAACTGCAACATCTGGGATGCCATGAAGGGCGACC
GTGCAGGAGTCCCTCGCTGGCCACGACAACCGCGTGAGCTGCCTTGGGGTACCGACGATGGCATGGCTGT
GGCCACGGGCTCCTGGACTCCTTCTCAAGATCTGGAAC

ACGCGTACGCGGCCGCTCGAG - GFP Tag - GTTTAA



[View online »](#)

Protein Sequence: >RG204178 representing NM_005273
 Red=Cloning site Green=Tags(s)

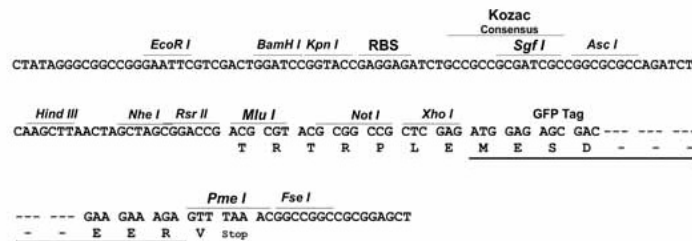
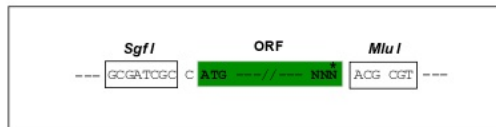
MSELEQLRQAEQLRNQIRDARKACGDSTLTQITAGLDPVGRIQMRTRRTLGRHLAKIYAMHWGTDSRLL
 VSASQDGKLIWDSYTTNKVHAIPLRSSWVMTCAYPNSGNFVACGGLDNICSIYSLKTREGNVRVSRELP
 GHTGYLSCCRFLDDNQIITSSGDTTCALWDIETGQQT VGFAGHSGDVMSLSLAPDGRTFVSGACDASIKL
 WDVRDSMCRQTFIGHESDINAVAFFPNGYAF TTGSDDATCRLFDLRADQELLMYSHDNIICGITSVAFSR
 SGRLLLAGYDDFNCNIWDAMKGDRAVLAGHDNRV SCLGVTDDGMAVATGSWDSFLKIWN

TRTRPLE - GFP Tag - V

Restriction Sites: SgfI-MluI

Cloning Scheme:

Cloning sites used for ORF Shutting:



ACCN: NM_005273

ORF Size: 1020 bp

OTI Disclaimer: The molecular sequence of this clone aligns with the gene accession number as a point of reference only. However, individual transcript sequences of the same gene can differ through naturally occurring variations (e.g. polymorphisms), each with its own valid existence. This clone is substantially in agreement with the reference, but a complete review of all prevailing variants is recommended prior to use. [More info](#)

OTI Annotation: This clone was engineered to express the complete ORF with an expression tag. Expression varies depending on the nature of the gene.

Components: The ORF clone is ion-exchange column purified and shipped in a 2D barcoded Matrix tube containing 10ug of transfection-ready, dried plasmid DNA (reconstitute with 100 ul of water).

Reconstitution Method:

1. Centrifuge at 5,000xg for 5min.
2. Carefully open the tube and add 100ul of sterile water to dissolve the DNA.
3. Close the tube and incubate for 10 minutes at room temperature.
4. Briefly vortex the tube and then do a quick spin (less than 5000xg) to concentrate the liquid at the bottom.
5. Store the suspended plasmid at -20°C. The DNA is stable for at least one year from date of shipping when stored at -20°C.

RefSeq: [NM_005273.2](#), [NP_005264.2](#)

RefSeq Size: 1666 bp

RefSeq ORF: 1023 bp

Locus ID: 2783

UniProt ID: [P62879](#)

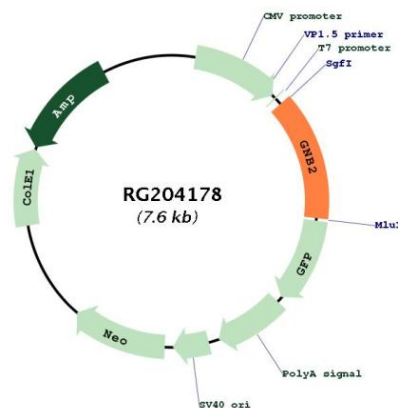
Cytogenetics: 7q22.1

Domains: WD40

Protein Pathways: Chemokine signaling pathway

Gene Summary: Heterotrimeric guanine nucleotide-binding proteins (G proteins), which integrate signals between receptors and effector proteins, are composed of an alpha, a beta, and a gamma subunit. These subunits are encoded by families of related genes. This gene encodes a beta subunit. Beta subunits are important regulators of alpha subunits, as well as of certain signal transduction receptors and effectors. This gene contains a trinucleotide (CCG) repeat length polymorphism in its 5' UTR. [provided by RefSeq, Jul 2008]

Product images:



Circular map for RG204178