

Product datasheet for **RG204165**

HOMER2 (NM_004839) Human Tagged ORF Clone

Product data:

Product Type:	Expression Plasmids
Product Name:	HOMER2 (NM_004839) Human Tagged ORF Clone
Tag:	TurboGFP
Symbol:	HOMER2
Synonyms:	ACPD; CPD; DFNA68; HOMER-2; VESL-2
Mammalian Cell Selection:	Neomycin
Vector:	pCMV6-AC-GFP (PS100010)
E. coli Selection:	Ampicillin (100 ug/mL)
ORF Nucleotide Sequence:	>RG204165 representing NM_004839 Red=Cloning site Blue=ORF Green=Tags(s)

TTTTGTAATACGACTCACTATAGGGCGGCCGGAATTCGTCGACTGGATCCGGTACCGAGGAGATCTGCC
GCC**CGATCGCC**

ATGGGAGAACAGCCCATCTTCACCACCCGAGCGCATGTCTCCAGATTGACCCCAACACCAAGAAGAACT
GGATGCCGTCGAGCAAGCAGGCGGTACCGTTTCTACTTCTATGATGTCACAAGGAACAGCTATCGGAT
CATCAGTGTGGACGGAGCCAAGGTGATCATAAACAGCACAATCACACCGAATATGACCTTACCAAAAACG
TCACAGAAGTTTGGCAGTGGCCGACAGCAGACCAACACAGTGTGGTTTGGGGTTTCTCTGAGC
AGCAGCTGACAAAAGTTTGCAGAGAAATTCAGGAGGTGAAAGAAGCTGCCAAGATAGCCAAGACAAGAC
GCAGGAGAAAATCGAGACCTCAAGTAATCATTCCAAGCATCCAGTGTCAACGGGACGGACGATGAAAAG
GCCTCTCACGCCGGTCCAGCCAACACACACCTGAAGTCTGAGAATGACAAGCTGAAGATTGCCTTGACGC
AGAGCGCAGCCAACGTGAAGAAGTGGGAGATCGAGCTGCAGACCCCTCGGGAGAGCAATGCACGGCTGAC
CACAGCACTGCAGGAGTCGGCAGCCAGTGTGGAGCAGTGGAAAGAGGCAGTTTCTCCATCTGCCGTGATGAG
AATGACCGGCTCCGCAACAAGATTGATGAGCTGGAAGAACAATGCAGTGAGATCAACAGAGAGAAGGAGA
AGAACACGCAGCTGAAGAGGAGGATCGAGGAGCTGGAGGCAGAGCTCCGAGAAAAGGAGACAGAGCTGAA
AGATCTCCGAAAACAAAGTGAATCATACTCAGCTCATGTGAGAGTCCGAATATGTCTCTGAGAAGCTA
GAGGCGGCAGAGAGACAATCAAACCTGGAAGACAAAGTCCGTTCCCTTAAAGACAGACATTGAGGAGA
GCAAATACCGACAGCGCCACCTGAAGTGGAGTTGAAGAGCTTCCCTGGAGGTGCTGGACGGGAAGATTGA
CGACCTGCATGACTTCCGCCGAGGGCTCTCCAAGCTGGGCACCGATAAC

ACGCGTACGCGGCCGCTCGAG - GFP Tag - GTTTAA



[View online »](#)

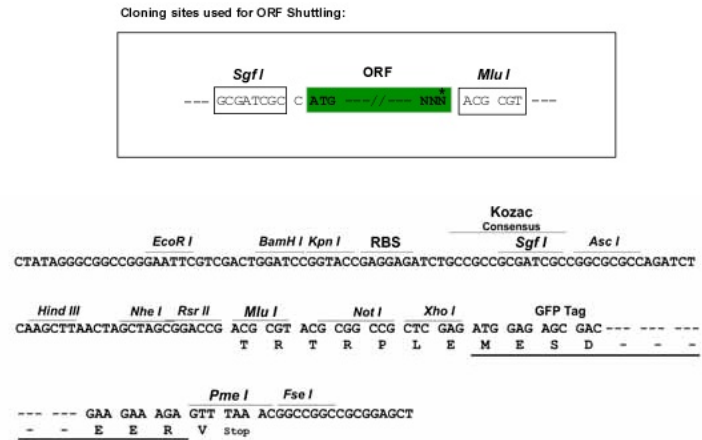
Protein Sequence: >RG204165 representing NM_004839
 Red=Cloning site Green=Tags(s)

MGEQPIFTTRAHVFDIDPNTKKNWMPASKQAVTVSYFYDVTRNSYRIISVDGAKVIINSTITPNMTFTKT
 SQKFGQWADSRANTVFGLGFSSEQQLTKFAEKFQEVKEAAKIAKDKTQEKIETSSNHSQASSVNGTDDEK
 ASHAGPANTHLKSENDLKIALLTQSAANVKKWEIELQTLRESNARLTTALQESAASVEQWKRQFSICRDE
 NDRLRNKIDEELEQCSEINREKEKNTQLKRRIEELEAELEKRETELKDLRKQSEIIPQLMSECEYVSEKL
 EAAERDNQNLKEDKVRSLKTDIEESKYRQRHLKVELKSFLEVLGDGKIDDLHDFRRLGSKLGTDN

TRTRPLE - GFP Tag - V

Restriction Sites: SgfI-MluI

Cloning Scheme:



ACCN: NM_004839

ORF Size: 1029 bp

OTI Disclaimer: The molecular sequence of this clone aligns with the gene accession number as a point of reference only. However, individual transcript sequences of the same gene can differ through naturally occurring variations (e.g. polymorphisms), each with its own valid existence. This clone is substantially in agreement with the reference, but a complete review of all prevailing variants is recommended prior to use. [More info](#)

OTI Annotation: This clone was engineered to express the complete ORF with an expression tag. Expression varies depending on the nature of the gene.

Components: The ORF clone is ion-exchange column purified and shipped in a 2D barcoded Matrix tube containing 10ug of transfection-ready, dried plasmid DNA (reconstitute with 100 ul of water).

Reconstitution Method:

1. Centrifuge at 5,000xg for 5min.
2. Carefully open the tube and add 100ul of sterile water to dissolve the DNA.
3. Close the tube and incubate for 10 minutes at room temperature.
4. Briefly vortex the tube and then do a quick spin (less than 5000xg) to concentrate the liquid at the bottom.
5. Store the suspended plasmid at -20°C. The DNA is stable for at least one year from date of shipping when stored at -20°C.

RefSeq: [NM_004839.4](#)

RefSeq Size: 1972 bp

RefSeq ORF: 1032 bp

Locus ID: 9455

UniProt ID: [Q9NSB8](#)

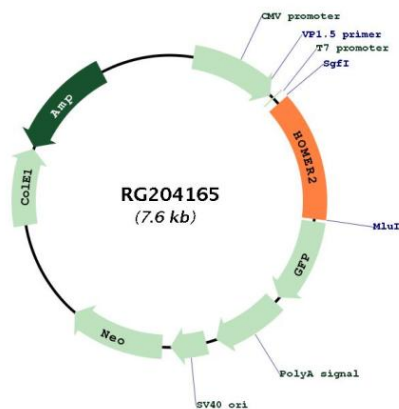
Cytogenetics: 15q25.2

Domains: WH1

Protein Families: Druggable Genome

Gene Summary: This gene encodes a member of the homer family of dendritic proteins. Members of this family regulate group 1 metabotropic glutamate receptor function. The encoded protein is a postsynaptic density scaffolding protein. Alternative splicing results in multiple transcript variants. Two related pseudogenes have been identified on chromosome 14. [provided by RefSeq, Jun 2011]

Product images:



Circular map for RG204165