

Product datasheet for **RG204143**

SMAD9 (NM_005905) Human Tagged ORF Clone

Product data:

Product Type:	Expression Plasmids
Product Name:	SMAD9 (NM_005905) Human Tagged ORF Clone
Tag:	TurboGFP
Symbol:	SMAD9
Synonyms:	MADH6; MADH9; PPH2; SMAD8; SMAD8/9; SMAD8A; SMAD8B
Mammalian Cell Selection:	Neomycin
Vector:	pCMV6-AC-GFP (PS100010)
E. coli Selection:	Ampicillin (100 ug/mL)
ORF Nucleotide Sequence:	>RG204143 representing NM_005905 Red=Cloning site Blue=ORF Green=Tags(s)

TTTTGTAATACGACTCACTATAGGGCGGCCGGAATTCGTCGACTGGATCCGGTACCGAGGAGATCTGCC
GCC**CGATCGCC**

ATGCACTCCACCACCCCATCAGCTCCCTCTTCTCCTTCACCAGCCCCGAGTGAAGAGACTGCTAGGCT
GGAAGCAAGGAGATGAAGAGGAAAAGTGGGCAGAGAAGGCAGTGGACTCTCTAGTGAAGAAGTTAAAGAA
GAAGAAGGGAGCCATGGACGAGCTGGAGAGGGCTCTCAGCTGCCCGGGCAGCCAGCAAATGCGTCAGC
ATCCCCGCTCCCTGGACGGCGGCTGCAGGTGCCACCAGGAGGCTGCCCATGTGATTTACTGTC
GCGTGTGGCGCTGGCCGGATCTGCAGTCCACCACGAGCTGAAGCCGCTGGAGTGTGTGAGTCCCATT
TGGCTCCAAGCAGAAAGAAGTGTGCATTAACCCCTTACCACTACCGCCGGTGGAGACTCCAGTACTGCC
CCTGTGCTCGTGCCAAGACACAGTGAATATAACCCCCAGCTCAGCCTCCTGGCCAAGTCCCGCAGCGCT
CCCTGCACAGTGAAGCACTCATGCCACACAACGCCACCTATCCTGACTCTTCCAGCAGCCTCCGTGCTC
TGCACTCCCTCCCTACCCAGCCACGCGTTCTCCAGTCCCGTGCACGGCCAGCTACCCTCACTCCCCA
GGAAGTCTTCTGAGCCAGAGAGTCCCTATCAACTCAGACTTTCGACCAGTTTGTACGAGGAGCCCC
AGCACTGGTGTCTCGTTCGCTACTATGAACTGAACAACCGAGTTGGGGAGACATTCCAGGCTTCTCCCG
AAGTGTGCTCATAGATGGGTTACCCGACCTTCAAATAACAGGAACAGATTCTGTCTTGGACTTCTTCT
AATGTAACAGAACTCAACGATAGAAAATACCAGGAGACATATAGGAAAGGGTGTGCACTGTGACTGACG
TCGGGGGAGAGGTGTATGCCGAGTGCAGTGCAGCAGCATCTTTGTGAGAGCCGGAACGCAACTA
TCAACACGGCTTCCACCCAGTACCGTCTGCAAGATCCCCAGCGCTGCAGCCTCAAGGTCTTCAACAAC
CAGCTCTTCGCTCAGCTCCTGGCCAGTCAAGTACCACGGCTTGAAGTCGTGTATGAACTGACCAAGA
TGTGACTATCCGGATGAGTTTTGTTAAGGGTGGGGTGTGAGTATCATCGCCAGGATGCACACGAC
CCCCTGCTGGATTGAGATTCATCTTCATGGCCACTGCAGTGGCTGGACAAAGTTCTGACTCAGATGGGC
TCTCCACATAACCCATTTCTTCAAGTGTCT

AGCGGACCGACGCGTACGCGGCCGCTCGAG - GFP Tag - GTTTAA



[View online >](#)

Protein Sequence: >RG204143 representing NM_005905
Red=Cloning site Green=Tags(s)

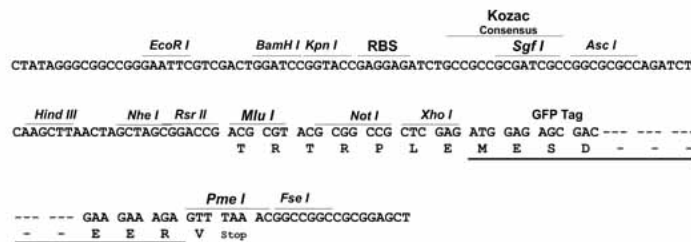
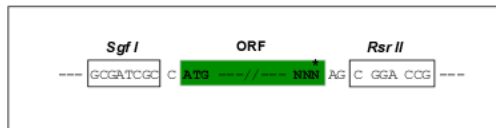
MHSTTPISSLFSFTSPAVKRLLGWKQGDEEEKWAEKAVDSL VKKLKKKKGAMDELERALSCPGQPSKCVT
 IPRSLDGR LQVSHRKGLPHVIYCRVWRWPD LQSHHELKPLECCEFPFGSKQKEVCINPYHYRRVETPVLP
 PVLVPRHSEYNPQLSLLAKFRSASLHSEPLMPHNATYPDSFQPPCSALPPSPSHAFSQSPCTASYPHSP
 GSPSESPYQHSDFRPVCYEEPQHWCSVAYYELNNRVGETFQASSR SVLIDGFTDPSNNRNRFLGLLS
 NVNRNSTIENTRRHIGKGVHLYYVGVEVYAEVSDSSIFVQSRNCNYQHGFHPATVCKIPSGCSLKVFN
 QLFAQLLAQSVHHGFVYVELTKMCTIRMSFVKGWGAEYHRQDVTSTPCWIEIHLHGPLQLWLDKVL TQMG
 SPHNPISSVS

SGPTRRRLE – GFP Tag – V

Restriction Sites: SgfI-RsrII

Cloning Scheme:

Cloning sites used for ORF Shuttling:



ACCN: NM_005905

ORF Size: 1290 bp

OTI Disclaimer: The molecular sequence of this clone aligns with the gene accession number as a point of reference only. However, individual transcript sequences of the same gene can differ through naturally occurring variations (e.g. polymorphisms), each with its own valid existence. This clone is substantially in agreement with the reference, but a complete review of all prevailing variants is recommended prior to use. [More info](#)

OTI Annotation: This clone was engineered to express the complete ORF with an expression tag. Expression varies depending on the nature of the gene.

Components: The ORF clone is ion-exchange column purified and shipped in a 2D barcoded Matrix tube containing 10ug of transfection-ready, dried plasmid DNA (reconstitute with 100 ul of water).

Reconstitution Method:

1. Centrifuge at 5,000xg for 5min.
2. Carefully open the tube and add 100ul of sterile water to dissolve the DNA.
3. Close the tube and incubate for 10 minutes at room temperature.
4. Briefly vortex the tube and then do a quick spin (less than 5000xg) to concentrate the liquid at the bottom.
5. Store the suspended plasmid at -20°C. The DNA is stable for at least one year from date of shipping when stored at -20°C.

RefSeq: [NM_005905.6](#)

RefSeq Size: 1943 bp

RefSeq ORF: 1293 bp

Locus ID: 4093

UniProt ID: [O15198](#)

Cytogenetics: 13q13.3

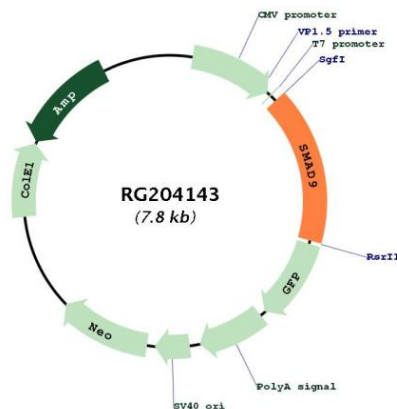
Domains: DWB, DWA, MH1

Protein Families: ES Cell Differentiation/IPS, Transcription Factors

Protein Pathways: TGF-beta signaling pathway

Gene Summary: The protein encoded by this gene is a member of the SMAD family, which transduces signals from TGF-beta family members. The encoded protein is activated by bone morphogenetic proteins and interacts with SMAD4. Two transcript variants encoding different isoforms have been found for this gene.[provided by RefSeq, Jan 2010]

Product images:



Circular map for RG204143