

## Product datasheet for **RG204133**

### STK38 (NM\_007271) Human Tagged ORF Clone

#### Product data:

Product Type:	Expression Plasmids
Product Name:	STK38 (NM_007271) Human Tagged ORF Clone
Tag:	TurboGFP
Symbol:	STK38
Synonyms:	NDR; NDR1
Mammalian Cell Selection:	Neomycin
Vector:	pCMV6-AC-GFP (PS100010)
E. coli Selection:	Ampicillin (100 ug/mL)



[View online »](#)

**ORF Nucleotide Sequence:**

>RG204133 representing NM\_007271  
 Red=Cloning site Blue=ORF Green=Tags(s)

TTTTGTAATACGACTCACTATAGGGCGGCCGGAATTCGTCGACTGGATCCGGTACCGAGGAGATCTGCC  
 GCC**CGGATCGCC**

ATGGCAATGACAGGCTCAACACCTTGCTCATCCATGAGTAACCACACAAAGGAAAGGGTGACAATGACCA  
 AAGTGACACTGGAGAATTTTATAGCAACCTTATCGCTCAACATGAAGAACGAGAAATGAGACAAAAGAA  
 GTTAGAAAAGGTGATGGAAGAAGAAGGCCATAAAGATGAGGAGAAACGACTCCGGAGATCAGCACATGCT  
 CGGAAGGAAAACAGAGTTTCTTCGTTTGAAGAGAACAAGACTTGGATTGGAAGATTTTGTGCTTAAAG  
 TAATAGGCAGAGGAGCATTGGTGAGGTACGGCTTGTTCCAGAAGAAAGATACGGGACATGTGTATGCAAT  
 GAAAATACTCCGTAAAGCAGATATGCTTAAAAAGAGCAGGTTGGCCACATTCGTGCGGAGCGTGACATT  
 CTAGTGGAGGCAGACAGTTTGTGGGTTGTGAAAATGTTCTATAGTTTTCCAGATAAGCTAAACCTCTACC  
 TAATCATGGAGTTCCTGCCTGGAGGGGACATGATGACCTTGTGATGAAAAAGACACTCTGACAGAAGA  
 GGAGACTCAGTTTTATATAGCAGAAACAGTATTAGCCATAGACTCTATCCACCACTTGGATTTCATCCAC  
 AGAGACATCAAACAGACAACCTTCTTTGGACAGCAAGGGCCATGTGAAACTTTCTGACTTTGGTCTTT  
 GCACAGGACTGAAAAAGCACATAGGACAGAATTTTATAGGAATCTGAACCACAGCCTCCCCAGTGATT  
 CACTTCCAGAACATGAATTCAAAAGGAAAGCAGAAACCTGGAAAAAGAAATAGACGTCAGCTAGCCTTC  
 TCCACAGTAGGCACTCCTGACTACATTGCTCCTGAGGTGTTTATGCAGACCGGGTACAACAAGCTCTGTG  
 ATGGTGGTTCGCTGGGGTGATCATGTATGAGATGCTCATCGGCTACCCACCTTCTGTTCTGAGACCCC  
 TCAAGAGACATATAAGAAGGTGATGAACTGAAAGAACTTTGACTTTTCTCCAGAAGTCCCCTCTCT  
 GAGAAAGCCAAGGATCTAATTTTGAAGTCTGCTGTGAATGGGAACATAGAATTGGAGCTCCTGGAGTTG  
 AGAAAATAAAAAGTAACCTTTTTTTGAAGCGTTGACTGGGAACATATCAGAGAGAGACCTGCTGCAAT  
 ATCTATTGAAATCAAAGCATTGATGATACCTCAAACCTCGATGAGTTTCCAGAATCTGATATTCTTAAG  
 CCAACAGTGGCCACAAGTAATCATCCTGAGACTGACTACAAGAACAAGACTGGGTCTTCATCAATTACA  
 CGTACAAGCGCTTTGAGGGCCTGACTGCAAGGGGGCAATACCTTCTACATGAAAGCAGCAAAA

AG**CGGACCG**ACGCGTACGCGGCCGCTCGAG – GFP Tag – GTTTAA

**Protein Sequence:**

>RG204133 representing NM\_007271  
 Red=Cloning site Green=Tags(s)

MAMTGSTPCSSMSNHTKERVTMTKVTLENFYSNLIAQHEEREMRQKKLEKVMEEGLKDEEKRLRRSAHA  
 RKETEFRLRKRRLGLEDFESLKVIGRAFGEVRLVQKKDGHVYAMKILRKADMLEKEQVGHIRAERDI  
 LVEADSLWVVKMFYSFQDKLNLYLIMEFLPGDMMTLLMKKDTL TEEETQFYIAETVLAIDSIHQLGFIH  
 RDIKPDNLLLDKSGHVKLSDFGLCTGLKKAHRTEFYRNLNHSLSDFTFQNMNSKRKAETWKRNRRLAF  
 STVGTDPDYIAPEVFMQTGYNKLCDWWSLGVIMYEMLIGYPPFCSETPQETYKKVMNWKETLTFPPEVPIS  
 EKAKDLILRFCEWEHRIGAPGVVEIKSNSFFEGVDWEHIRERPAASIEIKSIDDTSNFDEFPESDILK  
 PTVATSNHPETDYKNKDWVFINYTYKRFEGLTARGAIPSYMKAAK

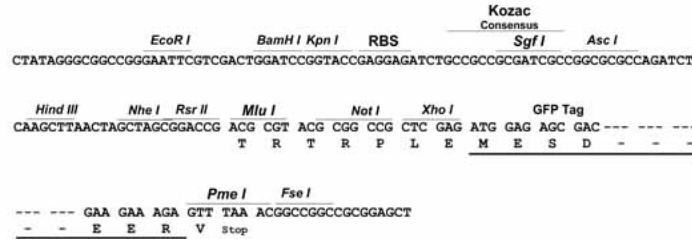
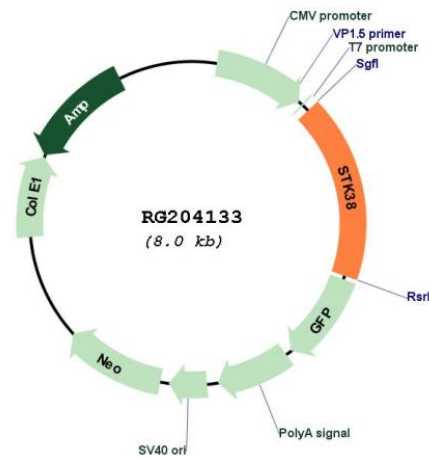
SGP**TRRRLE** – GFP Tag – V

**Restriction Sites:**

Sgfl-RsrII

**Cloning Scheme:**

Cloning sites used for ORF Shuttling:


**Plasmid Map:**

**ACCN:** NM\_007271

**ORF Size:** 1395 bp

**OTI Disclaimer:** The molecular sequence of this clone aligns with the gene accession number as a point of reference only. However, individual transcript sequences of the same gene can differ through naturally occurring variations (e.g. polymorphisms), each with its own valid existence. This clone is substantially in agreement with the reference, but a complete review of all prevailing variants is recommended prior to use. [More info](#)
**OTI Annotation:** This clone was engineered to express the complete ORF with an expression tag. Expression varies depending on the nature of the gene.

<b>Components:</b>	The ORF clone is ion-exchange column purified and shipped in a 2D barcoded Matrix tube containing 10ug of transfection-ready, dried plasmid DNA (reconstitute with 100 ul of water).
<b>Reconstitution Method:</b>	<ol style="list-style-type: none"><li>1. Centrifuge at 5,000xg for 5min.</li><li>2. Carefully open the tube and add 100ul of sterile water to dissolve the DNA.</li><li>3. Close the tube and incubate for 10 minutes at room temperature.</li><li>4. Briefly vortex the tube and then do a quick spin (less than 5000xg) to concentrate the liquid at the bottom.</li><li>5. Store the suspended plasmid at -20°C. The DNA is stable for at least one year from date of shipping when stored at -20°C.</li></ol>
<b>RefSeq:</b>	<a href="#">NM_007271.4</a>
<b>RefSeq Size:</b>	3593 bp
<b>RefSeq ORF:</b>	1398 bp
<b>Locus ID:</b>	11329
<b>UniProt ID:</b>	<a href="#">Q15208</a>
<b>Cytogenetics:</b>	6p21.31
<b>Domains:</b>	pkinase, TyrKc, S_TKc
<b>Protein Families:</b>	Druggable Genome, Protein Kinase
<b>Gene Summary:</b>	This gene encodes a member of the AGC serine/threonine kinase family of proteins. The kinase activity of this protein is regulated by autophosphorylation and phosphorylation by other upstream kinases. This protein has been shown to function in the cell cycle and apoptosis. This protein has also been found to regulate the protein stability and transcriptional activity of the MYC oncogene. Alternative splicing results in multiple transcript variants. [provided by RefSeq, Feb 2015]