

Product datasheet for **RG204112**

TEM8 (ANTXR1) (NM_018153) Human Tagged ORF Clone

Product data:

Product Type:	Expression Plasmids
Product Name:	TEM8 (ANTXR1) (NM_018153) Human Tagged ORF Clone
Tag:	TurboGFP
Symbol:	TEM8
Synonyms:	ATR; GAPO; TEM8
Mammalian Cell Selection:	Neomycin
Vector:	pCMV6-AC-GFP (PS100010)
E. coli Selection:	Ampicillin (100 ug/mL)
ORF Nucleotide Sequence:	>RG204112 representing NM_018153 Red=Cloning site Blue=ORF Green=Tags(s)

TTTTGTAATACGACTCACTATAGGGCGGCCGGAATTCGTCGACTGGATCCGGTACCGAGGAGATCTGCC
GCC**CGATCGCC**

ATGGCCACGGCGGAGCGGAGAGCCCTCGGCATCGGCTTCCAGTGGCTCTCTTTGGCCACTCTGGTGTCTCA
TCTGCGCCGGGCAAGGGGACGCAGGGAGGATGGGGTCCAGCCTGTACGGCGGATTTGACCTGTACTT
CATTTTGGACAAATCAGGAAGTGTGCTGCACCACTGGAATGAAATCTATTACTTTGTGGAACAGTTGGCT
CACAAATTCATCAGCCACAGTTGAGAATGTCCTTTATTGTTTTCTCACCCGAGGAACAACCTTAATGA
AACTGACAGAAGACAGAGAACAATCCGTCAAGGCCTAGAAGAACTCCAGAAAGTTCTGCCAGGAGGAGA
CACTTACATGCATGAAGGATTTGAAAGGCCAGTGAGCAGATTTATTATGAAAACAGACAAGGGTACAGG
ACAGCCAGCGTCATCATTGCTTTGACTGATGGAGAACTCCATGAAGATCTCTTTTCTATTTCAGAGAGGG
AGGCTAATAGGTCTCGAGATCTTGGTGCAATTGTTTACTGTGTTGGTGTGAAAGATTTCAATGAGACACA
GCTGGCCCGGATTGCGGACAGTAAGGATCATGTGTTTCCCGTGAATGACGGCTTTCAGGCTCTGCAAGGC
ATCATCCACTCAATTTGAGAAGTCTGCATCGAAATTTAGCAGCTGAACCATCCACCATATGTGCAG
GAGAGTCAATTTCAAGTTGTCGTGAGAGGAAACGGCTTCCGACATGCCCGCAACGTGGACAGGGTCCCTCTG
CAGCTTCAAGATCAATGACTCGGTCACACTCAATGAGAAGCCCTTTTCTGTGGAAGATACTTATTTACTG
TGTCAGCGCCTATCTTAAAAGAAGTTGGCATGAAAGCTGCACTCCAGGTCAGCATGAACGATGGCCTCT
CTTTTATCTCCAGTTCTGTCATCATCACCACCACACTGTAGCCTCCACAAAATTGCATCAGGCCCCAC
AACAGCTGCTTGCATGGAA

ACGCGTACGCGGCCGCTCGAG - GFP Tag - GTTTAA



[View online »](#)

Protein Sequence: >RG204112 representing NM_018153
 Red=Cloning site Green=Tags(s)

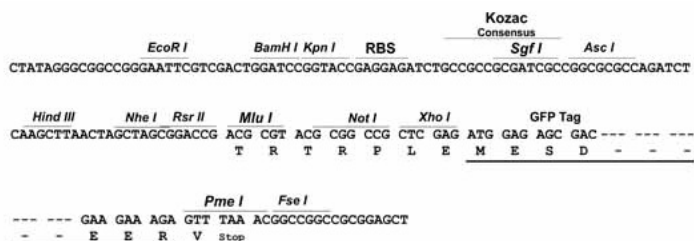
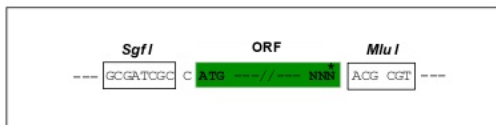
MATAERRALGIGFQWLSLATLVLICAGQGGREDGGPACYGGFDLYFILDKSGSVLHHWNEIYFVEQLA
 HKFISPQLRMSFIVFSTRGTTLMKLTEDREQIRQGLEELQKVLPGGDTYMHEGFERASEQIYYENRQGYR
 TASVIIALTDGELHEDLFFYSEREANRSRDLGAIYYCVGVKDFNETQLARIADSKDHVFPVNDGFQALQG
 IIHSILKKSCIEILAAEPSTICAGESFQVVVRNGFRHARNVDRVLCSEKINDSVTLNEKPFVSVEDTYLL
 CPAPILKEVGMKAALQVSMNDGLSFISSSVIITTTTHCSLHKIASGPTTAACME

TRTRPLE - GFP Tag - V

Restriction Sites: SgfI-MluI

Cloning Scheme:

Cloning sites used for ORF Shuttling:



ACCN: NM_018153

ORF Size: 999 bp

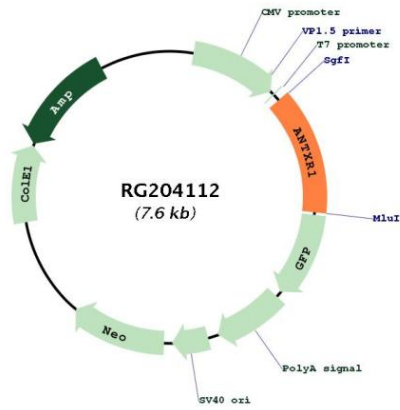
OTI Disclaimer: Due to the inherent nature of this plasmid, standard methods to replicate additional amounts of DNA in E. coli are highly likely to result in mutations and/or rearrangements. Therefore, OriGene does not guarantee the capability to replicate this plasmid DNA. Additional amounts of DNA can be purchased from OriGene with batch-specific, full-sequence verification at a reduced cost. Please contact our customer care team at custsupport@origene.com or by calling 301.340.3188 option 3 for pricing and delivery.

The molecular sequence of this clone aligns with the gene accession number as a point of reference only. However, individual transcript sequences of the same gene can differ through naturally occurring variations (e.g. polymorphisms), each with its own valid existence. This clone is substantially in agreement with the reference, but a complete review of all prevailing variants is recommended prior to use. [More info](#)

OTI Annotation: This clone was engineered to express the complete ORF with an expression tag. Expression varies depending on the nature of the gene.

Components:	The ORF clone is ion-exchange column purified and shipped in a 2D barcoded Matrix tube containing 10ug of transfection-ready, dried plasmid DNA (reconstitute with 100 ul of water).
Reconstitution Method:	<ol style="list-style-type: none">1. Centrifuge at 5,000xg for 5min.2. Carefully open the tube and add 100ul of sterile water to dissolve the DNA.3. Close the tube and incubate for 10 minutes at room temperature.4. Briefly vortex the tube and then do a quick spin (less than 5000xg) to concentrate the liquid at the bottom.5. Store the suspended plasmid at -20°C. The DNA is stable for at least one year from date of shipping when stored at -20°C.
RefSeq:	<u>NM_018153.3</u>
RefSeq Size:	2143 bp
RefSeq ORF:	1002 bp
Locus ID:	84168
UniProt ID:	<u>Q9H6X2</u>
Cytogenetics:	2p13.3
Domains:	VWA
Protein Families:	Druggable Genome, Transmembrane
Gene Summary:	This gene encodes a type I transmembrane protein and is a tumor-specific endothelial marker that has been implicated in colorectal cancer. The encoded protein has been shown to also be a docking protein or receptor for Bacillus anthracis toxin, the causative agent of the disease, anthrax. The binding of the protective antigen (PA) component, of the tripartite anthrax toxin, to this receptor protein mediates delivery of toxin components to the cytosol of cells. Once inside the cell, the other two components of anthrax toxin, edema factor (EF) and lethal factor (LF) disrupt normal cellular processes. Three alternatively spliced variants that encode different protein isoforms have been described. [provided by RefSeq, Oct 2008]

Product images:



Circular map for RG204112