

## Product datasheet for **RG204096**

### PARL (NM\_018622) Human Tagged ORF Clone

#### Product data:

Product Type:	Expression Plasmids
Product Name:	PARL (NM_018622) Human Tagged ORF Clone
Tag:	TurboGFP
Symbol:	PARL
Synonyms:	PRO2207; PSARL; PSARL1; PSENIP2; RHBDS1
Mammalian Cell Selection:	Neomycin
Vector:	pCMV6-AC-GFP (PS100010)
E. coli Selection:	Ampicillin (100 ug/mL)
ORF Nucleotide Sequence:	>RG204096 representing NM_018622 Red=Cloning site Blue=ORF Green=Tags(s)

TTTTGTAATACGACTCACTATAGGGCGGCCGGAATTCGTCGACTGGATCCGGTACCGAGGAGATCTGCC  
GCC**CGATCGCC**

ATGGCGTGGCGAGGCTGGGCGCAGAGAGGCTGGGGCTGCGGCCAGGCGTGGGGTGCCTGGTGGCGGCC  
GCAGCTGCGAGGAGCTCACTGCGGTCCTAACCCCGCCGAGCTCCTCGGACGCAGGTTAACTTCTTTAT  
TCAACAAAATGCGGATTCAGAAAAGCACCCAGGAAGTTGAACCTCGAAGATCAGACCCAGGGACAAGT  
GGTGAAGCATAACAAGAGAAGTGCCTTGAATCCTCCTGTGGAAGAAACAGTCTTTATCCTTCTCCATC  
CTATAAGGAGTCTCATAAACCTTTATTTTTACTGTTGGGTTACAGGCTGTGCATTTGGATCAGCTGC  
TATTTGGCAATATGAATCACTGAAATCCAGGGTCCAGAGTATTTTATGATGGTATAAAAGCTGATTGGTTG  
GATAGCATAAGACCACAAAAGAAGGAGACTTCAGAAAGGAGATTAACAAGTGGTGAATAACCTAAGTG  
ATGGCCAGCGGACTGTGACAGGTATTATAGCTGCAAAATGTCTTGTATTCTGTTTATGGAGAGTACCTTC  
TCTGCAGCGGACAATGATCAGATATTTACATCGAATCCAGCCTCAAAGGTCCTTTGTTCTCCAATGTTG  
CTGTCAACATTCAGTCATTTCTCCTATTTACATGCGAGCAAAATGTATGTTTTGTTGGAGCTTCTCTT  
CCAGCATAGTGAACATTCGGGTCAAGAGCAGTTCATGGCAGTGTACCTATCTGCAGGTGTTATTTCCAA  
TTTTGTCAAGTACGTGGGTAAGTTGCCACAGGAAGATATGGACCATCACTTGGTGCATCTGGTCCATC  
ATGACAGTCTCGCAGCTGTCTGCACTAAGATCCAGAAGGGAGGCTTGCATTATTTTCTTCCGATG  
TCAGTTTACAGCAGGGAATGCCCTGAAAGCCATTATCGCCATGGATACAGCAGGAATGATCCTGGGATG  
GAAATTTTTGATCATGCGGCACATCTTGGGGAGCTCTTTTTGGAATATGGTATGTTACTTACGGTCAT  
GAACTGATTTGGAAGAACAGGGAGCCGCTAGTGAAATCTGGCATGAAATAAGGACTAATGGCCCCAAAA  
AAGGAGGTGGCTCTAAG

**ACGCGT**ACGCGGCCGCTCGAG - GFP Tag - GTTTAA



[View online »](#)

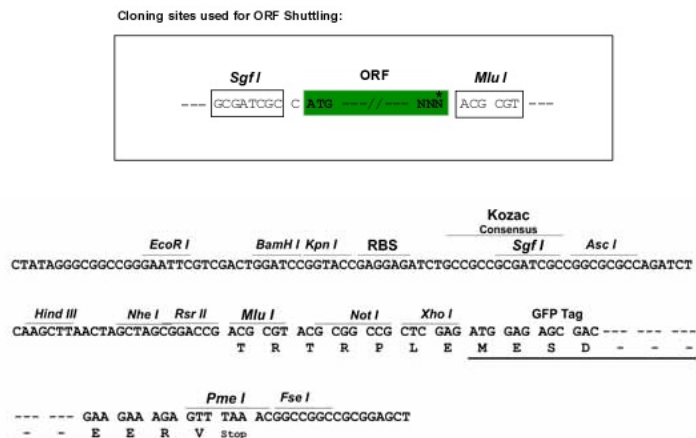
**Protein Sequence:** >RG204096 representing NM\_018622  
Red=Cloning site Green=Tags(s)

MAWRGWAQRGWGCGQAWGASVGGRSCEELTAVLTPPQLLGRRFNFFIQQKCGFRKAPRKVEPRRSDPGTS  
 GEAYKRSALIPPVEETVFYPSYPPIRSLIKPLFFTVGFTGCAFGSAAIWQYESLKSrvQSYFDGIKADWL  
 DSIRPQKEGDFRKEINKWNNLSDGQRTVTGIIAANLVFCLWRVPSLQRTMIRYFTSNPASKVLCSPML  
 LSTFSHFSLFHMAANMYVLWSFSSSIVNILGQEQFMAVYLSAGVISNFVSYVGK VATGRYGPSL GASGAI  
 MTVLAAVCTKIPEGLAIIFLPMFTFTAGNALKAIAMDTAGMILGWKFFDHA AHLGGALFGI WYV TYGH  
 ELIWK NREPLVKI WHEIRTNGPKKGGGSK

TRTRPLE - GFP Tag - V

**Restriction Sites:** SgfI-MluI

**Cloning Scheme:**



**ACCN:** NM\_018622

**ORF Size:** 1137 bp

**OTI Disclaimer:** The molecular sequence of this clone aligns with the gene accession number as a point of reference only. However, individual transcript sequences of the same gene can differ through naturally occurring variations (e.g. polymorphisms), each with its own valid existence. This clone is substantially in agreement with the reference, but a complete review of all prevailing variants is recommended prior to use. [More info](#)

**OTI Annotation:** This clone was engineered to express the complete ORF with an expression tag. Expression varies depending on the nature of the gene.

**Components:** The ORF clone is ion-exchange column purified and shipped in a 2D barcoded Matrix tube containing 10ug of transfection-ready, dried plasmid DNA (reconstitute with 100 ul of water).

**Reconstitution Method:**

1. Centrifuge at 5,000xg for 5min.
2. Carefully open the tube and add 100ul of sterile water to dissolve the DNA.
3. Close the tube and incubate for 10 minutes at room temperature.
4. Briefly vortex the tube and then do a quick spin (less than 5000xg) to concentrate the liquid at the bottom.
5. Store the suspended plasmid at -20°C. The DNA is stable for at least one year from date of shipping when stored at -20°C.

**RefSeq:** [NM\\_018622.7](#)

**RefSeq Size:** 1423 bp

**RefSeq ORF:** 1140 bp

**Locus ID:** 55486

**UniProt ID:** [Q9H300](#)

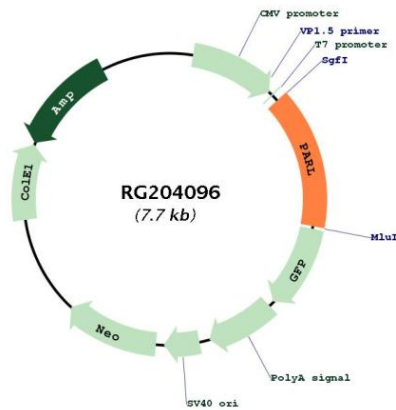
**Cytogenetics:** 3q27.1

**Domains:** Rhomboid

**Protein Families:** Protease, Transmembrane

**Gene Summary:** This gene encodes a member of the rhomboid family of intramembrane serine proteases that is localized to the inner mitochondrial membrane. The encoded protein regulates mitochondrial remodeling and apoptosis through regulated substrate proteolysis. Proteolytic processing of the encoded protein results in the release of a small peptide, P-beta, which may transit to the nucleus. Mutations in this gene may be associated with Parkinson's disease. [provided by RefSeq, May 2016]

### Product images:



Circular map for RG204096