

Product datasheet for **RG204054**

PGAM1 (NM_002629) Human Tagged ORF Clone

Product data:

Product Type:	Expression Plasmids
Product Name:	PGAM1 (NM_002629) Human Tagged ORF Clone
Tag:	TurboGFP
Symbol:	PGAM1
Synonyms:	HEL-S-35; PGAM-B; PGAMA
Mammalian Cell Selection:	Neomycin
Vector:	pCMV6-AC-GFP (PS100010)
E. coli Selection:	Ampicillin (100 ug/mL)
ORF Nucleotide Sequence:	>RG204054 representing NM_002629 Red=Cloning site Blue=ORF Green=Tags(s)

TTTTGTAATACGACTCACTATAGGGCGGCCGGAATTCGTCGACTGGATCCGGTACCGAGGAGATCTGCC
GCC**CGATCGCC**

ATGGCCGCTACAACTGGTGCTGATCCGGCACGGCGAGAGCGCATGGAACCTGGAGAACCGTTACGG
GCTGGTACGACGCCGACCTGAGCCCGCGGGCCACGAGGAGCGAAGCGCGGGCAGGCGCTACGAGA
TGCTGGCTATGAGTTTGACATCTGCTTCACCTCAGTGCAGAAGAGAGCGATCCGGACCTCTGGACAGT
CTAGATGCCATTGATCAGATGTGGTGCCAGTGGTGAGGACTTGGCGCTCAATGAGCGGCACTATGGG
GTCTAACCGGTCTCAATAAAGCAGAACTGCTGCAAAGCATGGTGAGGCCAGGTGAAGATCTGGAGGCG
CTCCTATGATGTCCACCACCTCCGATGGAGCCCGACCATCCTTTCTACAGCAACATCAGTAAGGATCGC
AGGTATGCAGACCTCACAGAAGATCAGTACCCTCCTGTGAGAGTCTGAAGGATACTATTGCCAGAGCTC
TGCCCTTCTGGAATGAAGAAATAGTTCCCCAGATCAAGGAGGGGAAACGTGTAAGTACTGATGACGCCATGG
CAACAGCTCCGGGGCATTGTCAAGCATCTGGAGGGTCTCTCTGAAGAGGCTATCATGGAGCTGAACCTG
CCGACTGGTATCCCATTTGTCTATGAATTGGACAAGAAGTGAAGCCTATCAAGCCCATGCAGTTTCTGG
GGGATGAAGAGACGGTGCCAAAGCCATGGAAGCTGTGGCTGCCAGGGCAAGGCCAAGAAG

ACGCGTACGCGGCCGCTCGAG - GFP Tag - GTTTAA



[View online »](#)

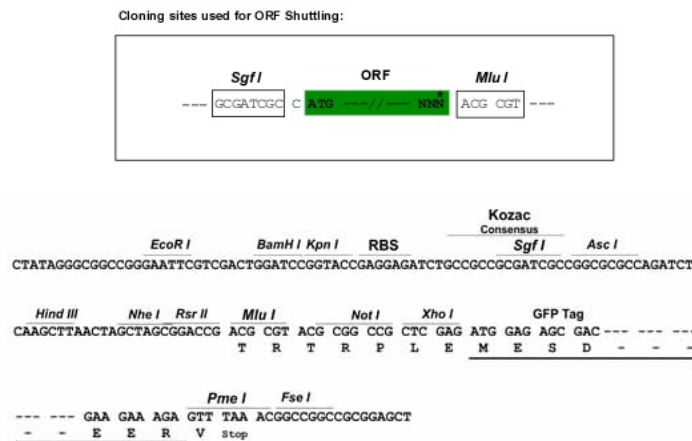
Protein Sequence: >RG204054 representing NM_002629
Red=Cloning site Green=Tags(s)

MAAYKLVLIRHGESAWNLENRFSGWYDADLSPAGHEEAKRGGQALRDAGYFDICFTSVQKRAIRTLWTV
 LDAIDQMWLPVVRTWRLNERHYGGLTGLNKAETAACHGAEQVKIWRRSYDVPPPPMEPDHPFYSNISKDR
 RYADLTEDQLPSCESLKDITARALPFWNEEIVPQIKEGKRVLIAAHGNSLRGIVKHLEGLSEEAIMELNL
 PTGIPIVYELDKNLKPIKPMQFLGDEETVRKAMEAVAAQ GKAKK

TRTRPLE - GFP Tag - V

Restriction Sites: SgfI-MluI

Cloning Scheme:



ACCN: NM_002629

ORF Size: 762 bp

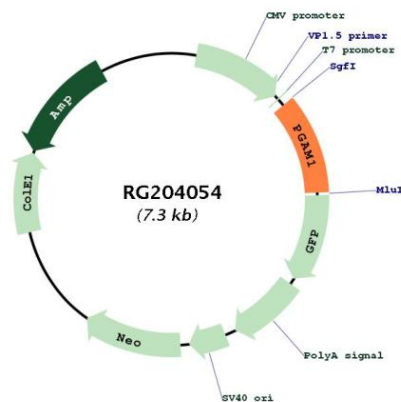
OTI Disclaimer: Due to the inherent nature of this plasmid, standard methods to replicate additional amounts of DNA in *E. coli* are highly likely to result in mutations and/or rearrangements. Therefore, OriGene does not guarantee the capability to replicate this plasmid DNA. Additional amounts of DNA can be purchased from OriGene with batch-specific, full-sequence verification at a reduced cost. Please contact our customer care team at custsupport@origene.com or by calling 301.340.3188 option 3 for pricing and delivery.

The molecular sequence of this clone aligns with the gene accession number as a point of reference only. However, individual transcript sequences of the same gene can differ through naturally occurring variations (e.g. polymorphisms), each with its own valid existence. This clone is substantially in agreement with the reference, but a complete review of all prevailing variants is recommended prior to use. [More info](#)

OTI Annotation: This clone was engineered to express the complete ORF with an expression tag. Expression varies depending on the nature of the gene.

Components:	The ORF clone is ion-exchange column purified and shipped in a 2D barcoded Matrix tube containing 10ug of transfection-ready, dried plasmid DNA (reconstitute with 100 ul of water).
Reconstitution Method:	<ol style="list-style-type: none"> 1. Centrifuge at 5,000xg for 5min. 2. Carefully open the tube and add 100ul of sterile water to dissolve the DNA. 3. Close the tube and incubate for 10 minutes at room temperature. 4. Briefly vortex the tube and then do a quick spin (less than 5000xg) to concentrate the liquid at the bottom. 5. Store the suspended plasmid at -20°C. The DNA is stable for at least one year from date of shipping when stored at -20°C.
RefSeq:	NM_002629.4
RefSeq Size:	1762 bp
RefSeq ORF:	765 bp
Locus ID:	5223
UniProt ID:	P18669
Cytogenetics:	10q24.1
Domains:	PGAM
Protein Pathways:	Glycolysis / Gluconeogenesis, Metabolic pathways
Gene Summary:	The protein encoded by this gene is a mutase that catalyzes the reversible reaction of 3-phosphoglycerate (3-PGA) to 2-phosphoglycerate (2-PGA) in the glycolytic pathway. Two transcript variants encoding different isoforms have been found for this gene. [provided by RefSeq, Nov 2015]

Product images:



Circular map for RG204054