

## Product datasheet for **RG204020**

### Ubiquilin (UBQLN1) (NM\_053067) Human Tagged ORF Clone

#### Product data:

Product Type:	Expression Plasmids
Product Name:	Ubiquilin (UBQLN1) (NM_053067) Human Tagged ORF Clone
Tag:	TurboGFP
Symbol:	UBQLN1
Synonyms:	DA41; DSK2; PLIC-1; UBQN; XDRP1
Mammalian Cell Selection:	Neomycin
Vector:	pCMV6-AC-GFP (PS100010)
E. coli Selection:	Ampicillin (100 ug/mL)



[View online »](#)

**ORF Nucleotide Sequence:**

>RG204020 representing NM\_053067  
 Red=Cloning site Blue=ORF Green=Tags(s)

TTTTGTAATACGACTCACTATAGGGCGGCCGGAATTCGTCGACTGGATCCGGTACCGAGGAGATCTGCC  
 GCCGCGATCGCC

ATGGCCGAGAGTGGTGAAGCGGCGTCTCCGGCTCCAGGATAGCGCCCGGAGCCGAAGGTGCTG  
 GCGCCCCGCGGCGCTGCTCCCGGAGCCAAAATCATGAAAGTCACCGTGAAGACCCGAAGGAAAA  
 GGAGGAATTCGCGTGCCGAGAATAGCTCCGTCAGCAGTTTAAAGGAAGAAATCTCTAAACGTTTTAAA  
 TCACATACTGACCAACTGTGTTGATATTTGCTGGAAAAATTTGAAAGATCAAGATACCTTGAGTCAGC  
 ATGGAATTCATGATGGACTTACTGTTACCTTGTCAATAAACACAAAACAGGCTCAGGATCATTACAGC  
 TCAGCAAAACAAATACAGCTGGAAGCAATGTTACTACATCACTCCTAATAGTAACTCTACATCTGGT  
 TCTGCTACTAGCAACCTTTGGTTTAGGTGGCCTTGGGGACTTGCAGGTCTGAGTAGCTGGGTTTGA  
 ATACTACCAACTTCTGAACTACAGAGTCAGATGCAGCGACAACCTTTGTCTAACCTGAAATGATGGT  
 CCAGATCATGAAAAATCCCTTTGTTTCAGAGCATGCTCTCAAATCCTGACCTGATGAGACAGTTAATTATG  
 GCCAATCCACAAATGCAGCAGTTGATACAGAGAAATCCAGAAATAGTCAATATGTTGAATAATCCAGATA  
 TAATGAGACAAACGTTGGAACCTGCCAGGAATCCAGCAATGATGCAGGAGATGATGAGGAACCGAGCCG  
 AGCTTTGAGCAACCTAGAAAGCATCCCAGGGGATATAATGCTTTAAGGCGCATGTACACAGATATTCAG  
 GAACCAATGCTGAGTGTGCACAAGAGCAGTTTGGTGGTAATCCATTTGCTTCCTTGGTGAAGCAATACAT  
 CCTCTGGTGAAGGTAGTCAACCTTCCCGTACAGAAAATAGAGTCCACTACCAATCCATGGGCTCCACA  
 GACTTCCAGAGTTCATCAGCTTCCAGCGGCACTGCCAGCACTGTGGTGGCACTACTGGTAGTACTGCC  
 AGTGGCACTTCTGGCAGAGTACTACTGCGCAAATTTGGTGCCTGGAGTAGGAGCTAGTATGTTCAACA  
 CACCAGGAATGCAGAGCTTGTGCAACAATAACTGAAAACCCACAACCTGATGCAAAAACATGTTCTGTCG  
 CCCCTACATGAGAAGCATGATGCAGTCACTAAGCCAGAATCCTGACCTGCTGCACAGATGCAGAATCCT  
 GATACACTATCAGCAATGTCAAACCTAGAGCAATGCAGGCTTGTACAGATTCAGCAGGGTTTACAGA  
 CATTAGCAACGGAAGCCCGGCCCTCATCCCAGGGTTTACTCCTGGCTTGGGGCATTAGGAAGCACTGG  
 AGGCTCTTCGGAATAATGGATCTAACGCCACACCTAGTAAAAACAAAGTCCCACAGCAGGAACCACT  
 GAACCTGGACATCAGCAGTTTATTCAGCAGATGCTGCAGGCTTGTCTGGAGTAAATCCTCAGCTACAGA  
 ATCCAGAAGTCAATTTAGCAACAACCTGGAACAACCTCAGTCAATGGGATTTTGAACCGTGAAGCAAA  
 CTTGCAAGCTCTAATAGCAACAGGAGGTGATATCAATGCAGCTATTGAAAGGTTACTGGGCTCCAGCCA  
 TCA

ACGCGTACGCGGCCGCTCGAG – GFP Tag – GTTTAA

**Protein Sequence:**

>RG204020 representing NM\_053067  
 Red=Cloning site Green=Tags(s)

MAESGESGPPGSQDSAAGAEGAGAPAAAAAEKPKIMKVTVKTPKEKEEFVAVPENSSVQFKEEISKRFK  
 SHTDQLVLIIFAGKILKDQDTLSQHGIDGLTVHLYIKTQNRPDHSAQQTNTAGSNVTTSSTPNSNSTSG  
 SATSNPFLGGLGGLAGLSSLGLNTNFSELQSQMQRQLLSNPMMVQIMENPFVQSMNSPDLMRQLIM  
 ANPQMQLIQRNPEISHMLNNDIMRQTLRLARNPAMMQEMMRNQDRALSNLESIPGGYNALRRMYTDIQ  
 EPMLSAAQEQFGGNPFASLVSNTSSGEGSQPSRTENRDLNPNWAPQTSQSSASSTASTVGGTTGSTA  
 SGTSGQSTTAPNLVPGVGASMFNTPGMQSLQIITENPQLMQNMLSAPYMRSMQSLSQNPDLAAQMQNP  
 DTLSAMSNPRAMQALLQIQQLQLATEAPGLIPGFPTPLGALGSTGGSSGTNGSNATPSENTSPTAGTT  
 EPGHQFIQQLQALAGVNPQLQNPVRFQQQLQLSANGFLNREANLQALQIATGGDINAAIERLLGSQP  
 S

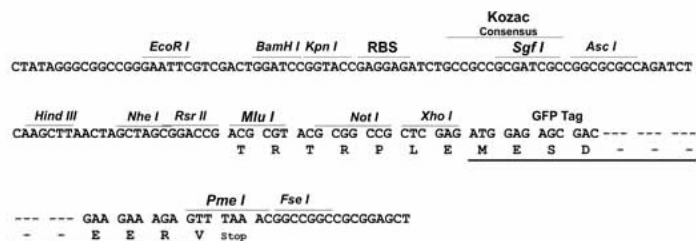
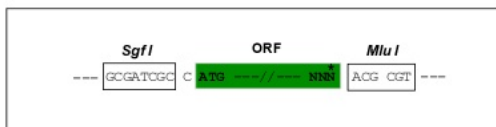
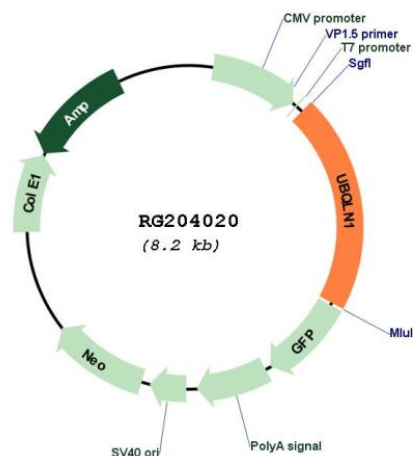
TRTRPLE – GFP Tag – V

**Restriction Sites:**

SgfI-MluI

**Cloning Scheme:**

Cloning sites used for ORF Shuttling:

**Plasmid Map:****ACCN:**                      NM\_053067**ORF Size:**                1683 bp

<b>OTI Disclaimer:</b>	The molecular sequence of this clone aligns with the gene accession number as a point of reference only. However, individual transcript sequences of the same gene can differ through naturally occurring variations (e.g. polymorphisms), each with its own valid existence. This clone is substantially in agreement with the reference, but a complete review of all prevailing variants is recommended prior to use. <a href="#">More info</a>
<b>OTI Annotation:</b>	This clone was engineered to express the complete ORF with an expression tag. Expression varies depending on the nature of the gene.
<b>Components:</b>	The ORF clone is ion-exchange column purified and shipped in a 2D barcoded Matrix tube containing 10ug of transfection-ready, dried plasmid DNA (reconstitute with 100 ul of water).
<b>Reconstitution Method:</b>	<ol style="list-style-type: none"> <li>1. Centrifuge at 5,000xg for 5min.</li> <li>2. Carefully open the tube and add 100ul of sterile water to dissolve the DNA.</li> <li>3. Close the tube and incubate for 10 minutes at room temperature.</li> <li>4. Briefly vortex the tube and then do a quick spin (less than 5000xg) to concentrate the liquid at the bottom.</li> <li>5. Store the suspended plasmid at -20°C. The DNA is stable for at least one year from date of shipping when stored at -20°C.</li> </ol>
<b>RefSeq:</b>	<a href="#">NM_053067.3</a>
<b>RefSeq Size:</b>	2354 bp
<b>RefSeq ORF:</b>	1686 bp
<b>Locus ID:</b>	29979
<b>UniProt ID:</b>	<a href="#">Q9UMX0</a>
<b>Cytogenetics:</b>	9q21.2-q21.3
<b>Domains:</b>	UBA, UBQ, ST11
<b>Protein Families:</b>	Druggable Genome
<b>Gene Summary:</b>	This gene encodes an ubiquitin-like protein (ubiquilin) that shares a high degree of similarity with related products in yeast, rat and frog. Ubiquilins contain an N-terminal ubiquitin-like domain and a C-terminal ubiquitin-associated domain. They physically associate with both proteasomes and ubiquitin ligases, and thus are thought to functionally link the ubiquitination machinery to the proteasome to affect in vivo protein degradation. This ubiquilin has also been shown to modulate accumulation of presenilin proteins, and it is found in lesions associated with Alzheimer's and Parkinson's disease. Two transcript variants encoding different isoforms have been found for this gene. [provided by RefSeq, Jul 2008]