

Product datasheet for **RG203996**

ALAS1 (NM_199166) Human Tagged ORF Clone

Product data:

Product Type:	Expression Plasmids
Product Name:	ALAS1 (NM_199166) Human Tagged ORF Clone
Tag:	TurboGFP
Symbol:	ALAS1
Synonyms:	ALAS; ALAS-H; ALAS3; ALASH; MIG4
Mammalian Cell Selection:	Neomycin
Vector:	pCMV6-AC-GFP (PS100010)
E. coli Selection:	Ampicillin (100 ug/mL)



[View online »](#)

ORF Nucleotide Sequence:

>RG203996 representing NM_199166
 Red=Cloning site Blue=ORF Green=Tags(s)

TTTTGTAATACGACTCACTATAGGGCGGCCGGAATTCGTCGACTGGATCCGGTACCGAGGAGATCTGCC
 GCC**CGGATCGCC**

ATGGAGAGTGTGTTGTCGCCGCTGCCATTCTTATCCCAGTCCCCAGGCCTTTCTGCAGAAAGCAGGCA
 AATCTCTGTTGTTCTATGCCAAAAGTGCCCAAGATGATGGAAGTTGGGGCCAAGCCAGCCCTCGGGC
 ATTGTCCACTGCAGCAGTACACTACCAACAGATCAAAGAAACCCCTCCGGCCAGTGAGAAAGACAAAAC
 GCTAAGGCCAAGGTCCAACAGACTCCTGATGGATCCCAGCAGAGTCCAGATGGCACACAGCTTCCGTCG
 GACACCCCTTGCCTGCCACAAGCCAGGGCACTGCAAGCAAATGCCCTTCTGCGCAGCACAGATGAATCA
 GAGAGGCAGCAGTGTCTTCTGCAAAGCCAGTCTTGAGCTTCAGGAGGATGTGCAGGAAATGAATGCCGTG
 AGGAAAGAGGTTGCTGAAACCTCAGCAGGCCAGTGTGGTTAGTGTGAAAACCGATGGAGGGGATCCCA
 GTGGACTGCTGAAGAACTCCAGGACATTATGCAAAGCAAAGACCAGAAAGAGTGTCTCATCTTCTTCA
 AGATAACTTGCCAAAATCTGTTCCACTTTTCAGTATGATCGTTTCTTTGAGAAAAAATGATGAGAAA
 AAGAATGACCACACCTATCGAGTTTTTAAACTGTGAACCGCGCAGCACACATCTCCCCATGGCAGATG
 ACTATTAGACTCCCTCATCACCAAAAAGCAAGTGCAGTCTGGTGCAGTAATGACTACCTAGGAATGAG
 TCGCCACCCACGGGTGTGTGGGCGATTATGGACACTTTGAAACAACATGGTGTGGGGCAGGTGGTACT
 AGAAATATTTCTGGAAGTGTAAATTCATGTGGACTTAGAGCGGGAGCTGGCAGACCTCCATGGGAAA
 ATGCCGCACTCTGTTTTCTCGTGCTTTGGGCAATGACTCAACCTCTTACCCTGGCTAAGATGAT
 GCCAGGCTGTGAGATTTACTCTGATTCTGGGAACCATGCCTCCATGATCCAAGGGATTGAAACAGCCGA
 GTGCCAAGTACATCTCCGCCACAATGATGTCAGCCACCTCAGAGAAGTGTGCAAAGATCTGACCCT
 CAGTCCCAAGATTGTGGCATTGAAACTGTCCATTCAATGGATGGGGCGGTGTGCCCAAGTGTGAAAGCT
 GTGTGATGTGGCCATGAGTTTGGAGCAATCACCTTCGTGGATGAGGTCCACGCAGTGGGGCTTTATGGG
 GCTCGAGGCGGAGGATTGGGGATCGGGATGGAGTCATGCCAAAATGGACATCATTCTGGAACACTTG
 GCAAAGCCTTTGGTTGTGTTGGAGGATACATCGCCAGCACGAGTCTCTGATTGACACCGTACGGTCTTA
 TGCTGCTGGCTTCTCATCTTACCACCTCTCTGCCACCATGCTGCTGGCTGGAGCCCTGGAGTCTGTGCGG
 ATCCTGAAGAGCGCTGAGGGACGGTGTCTCGCCGCCAGCACCAGCGCAACGCTCAAACCTCATGAGACAGA
 TGCTAATGGATGCCGGCCTCCCTGTTGCCACTGCCCCAGCCACATCATCCCTGTGCGGGTTCAGATGC
 TGCTAAAAACACAGAAGTCTGTGATGAACTAATGAGCAGACATAACATCTACGTGAAGCAATCAATTAC
 CCTACGGTGTCCCGGGGAGAAGAGCTCCTACGGATTGCCCCACCCCTCACCACACACCCAGATGATGA
 ACTACTTCTTGAGAATCTGCTAGTCACATGGAAGCAAGTGGGGCTGGAAGTGAAGCCTCATTCTCAGC
 TGAGTGCAACTTCTGAGGAGGCCACTGCATTTTGAAGTATGAGTGAAGAGAGAAGTCTATTCTCA
 GGCTTGAGCAAGTTGGTATCTGCTCAGGCC

ACGCGTACGCGGCCGCTCGAG - GFP Tag - GTTTAA

Protein Sequence:

>RG203996 representing NM_199166
 Red=Cloning site Green=Tags(s)

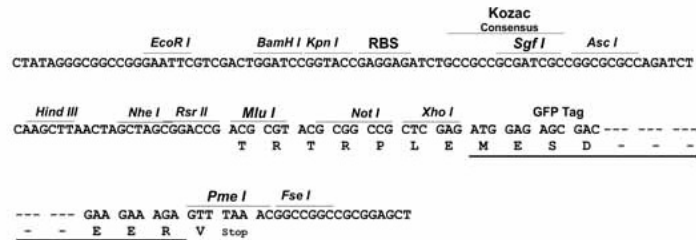
MESVVRRCPFLLSRVPQAFLLQKAGKSLFLFYAQNCPKMMVEGAKPAPRALSTAAVHYQQIKETPPASEKDKT
 AKAKVQQTPDGSQQSPDGTQLPSGHPLPATSQGTASKCPFLAAQMNQRGSSVFCKASLELQEDVQEMNAV
 RKEVAETSAGPSVVSVKTDGGDPSGLLKNFQDIMQKQRPERSHLLQDNLPKSVSTFYDRFFEKKIDEK
 KNDHTYRVFKTVNRRAHIFPMADDYSDSLITKKQVSVWCSDNYLGMSRHRVCGAVMDTLKQHGAGAGGT
 RNI SGTSKHFVDLERELADLHGKDAALLFSSCFVANDSTLFTLAKMMPGCEIYSDSGNHASMIQGI RNSR
 VPKYIFRHNDVSHLRELLQRSDPSVPKIVAFETVHSMGAVCPLEELCDVAHEFGAITFVDEVHAVGLYG
 ARGGGIGDRDGVMPKMDIISGTLGKAFGCVGGYIASTSSLIDTVRSYAAGFI FTSLPPMLLAGALESVR
 ILKSAEGRVLRQRNVKLMRQMLMDAGLPVVHCPSHIIPVVRVADAAKNTEVCDELMSRHIYVQAINY
 PTVPRGEELLRIAPTHHTPQMNNYFLENLLVTWKQVGLLELKPSSAECNFCRRPLHFEVMSEREKSYFS
 GLSKLVSAQA

TRTRPLE - GFP Tag - V

Restriction Sites: SgfI-MluI

Cloning Scheme:

Cloning sites used for ORF Shutting:



ACCN: NM_199166

ORF Size: 1920 bp

OTI Disclaimer: The molecular sequence of this clone aligns with the gene accession number as a point of reference only. However, individual transcript sequences of the same gene can differ through naturally occurring variations (e.g. polymorphisms), each with its own valid existence. This clone is substantially in agreement with the reference, but a complete review of all prevailing variants is recommended prior to use. [More info](#)

OTI Annotation: This clone was engineered to express the complete ORF with an expression tag. Expression varies depending on the nature of the gene.

Components: The ORF clone is ion-exchange column purified and shipped in a 2D barcoded Matrix tube containing 10ug of transfection-ready, dried plasmid DNA (reconstitute with 100 ul of water).

Reconstitution Method:

1. Centrifuge at 5,000xg for 5min.
2. Carefully open the tube and add 100ul of sterile water to dissolve the DNA.
3. Close the tube and incubate for 10 minutes at room temperature.
4. Briefly vortex the tube and then do a quick spin (less than 5000xg) to concentrate the liquid at the bottom.
5. Store the suspended plasmid at -20°C. The DNA is stable for at least one year from date of shipping when stored at -20°C.

RefSeq: [NM_199166.1](#), [NP_954635.1](#)

RefSeq Size: 2258 bp

RefSeq ORF: 1923 bp

Locus ID: 211

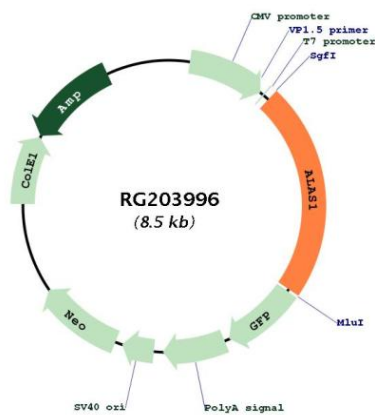
UniProt ID: [P13196](#)

Cytogenetics: 3p21.2

Protein Pathways: Glycine, serine and threonine metabolism, Metabolic pathways, Porphyrin and chlorophyll metabolism

Gene Summary: This gene encodes the mitochondrial enzyme which catalyzes the rate-limiting step in heme (iron-protoporphyrin) biosynthesis. The enzyme encoded by this gene is the housekeeping enzyme; a separate gene encodes a form of the enzyme that is specific for erythroid tissue. The level of the mature encoded protein is regulated by heme: high levels of heme down-regulate the mature enzyme in mitochondria while low heme levels up-regulate. A pseudogene of this gene is located on chromosome 12. Alternative splicing results in multiple transcript variants encoding different isoforms. [provided by RefSeq, Jan 2015]

Product images:



Circular map for RG203996