

Product datasheet for **RG203987**

ILVBL (NM_006844) Human Tagged ORF Clone

Product data:

| | |
|---------------------------|--|
| Product Type: | Expression Plasmids |
| Product Name: | ILVBL (NM_006844) Human Tagged ORF Clone |
| Tag: | TurboGFP |
| Symbol: | ILVBL |
| Synonyms: | 209L8; AHAS; HAACL1L; ILV2H |
| Mammalian Cell Selection: | Neomycin |
| Vector: | pCMV6-AC-GFP (PS100010) |
| E. coli Selection: | Ampicillin (100 ug/mL) |



[View online »](#)

ORF Nucleotide Sequence:

>RG203987 representing NM_006844
 Red=Cloning site Blue=ORF Green=Tags(s)

TTTTGTAATACGACTCACTATAGGGCGGCCGGAATTCGTCGACTGGATCCGGTACCGAGGAGATCTGCC
 GCC**CGGATCGCC**

ATGGAGACCCCCGCGCCCGCCCGCTGGGAGCTTATCCCCTCCTCCTGCTCCTGGCCTGCGGGA
 CGCTGGTGGCGCCTTGCTGGGGCCGCTCACCGCTGGGGCTTCTATCAGCTGCTGCACAAGGTGGA
 CAAGGCAAGCGTCCGGCATGGCGGAGAGAACGTGGCCGCTGTGCTGAGGGCCCATGGTGTGCGGTTTCATC
 TTCACGCTGGTGGTGGGCACATTTCCCGCTGCTGGTGGCTGTGAGAACTGGGCATCCGTGTGGTGG
 ACACACGCCATGAGGTACGGCCGCTTTTGTGCTGATGCTATGGCCCGCTGTCCGGGACGGTGGGCGT
 GGCGCAGTGACAGCAGGCCCTGGCCTACCAACACGGTACTGCGGTGAAGAATGCTCAGATGGCTCAG
 TCCCAATCCTGCTTCTGGTGGGGCTGCCAGCACTCTGCTGCAGAACCGGGTGCCTCCAGGCTGTTG
 ATCAGCTGTCCTTTCCGGCCACTCTGTAAGTTTTGTGTCTGTGCGGAGGGTGGGGACATTGTGCC
 CACCCTGAGGGCCGCGATGGCTGCCGCCAGTCGGGCACCCAGGTCGGTGTGGTGGAGCTGCCCGTT
 GACGTGCTGTACCCTACTTCATGGTCCAGAAGGAGATGGTGCCAGCCAAGCCACCAAGGGCCTCGTGG
 GCCGAGTGGTCTCCTGGTATTTAGAGAATTACCTGGCCAACCTCTTTCAGGAGCCTGGGAGCCTCAGCC
 CGAGGGACCGCTGCCCTGGACATCCCCAGGCTTCCCGCAGCAGGTTACGCGCTGTGTGGAGATCCTG
 AGCCGGGCAAGAGGCCTCTGATGGTGTGGGAGTACGGCCCTGCTCACCCCAACGTCTGCCGACAAGC
 TTCGGGCTGCCGTGGAGACCTTGGGTGTCCCTGCTTCTTGGAGGGATGGCACGGGGGCTGTTAGGCCG
 CAACCACCCCTCCACATCCGGGAGAACCAGTGCAGCCCTGAAGAAGCGGACGTATTGTCTAGCA
 GAACTGTGTGACTTCCGCTATCCTATGGCCGTGCTCAGCCACAGCAGCAAGATCATCATCGTCA
 ATCGTAATCGGAAGAGATGTTGCTCAACTCAGACATCTTCTGGAAGCCCAAGGAGGCTGTGCAGGGAGA
 TGTGGGTTCCCTTCGTGCTGAAGTTAGTGGAGGGCCTTCAGGGCCAGACCTGGGCCCCAGACTGGGTGGAG
 GAGCTGCGGGAAGCCGACCGGCAGAAGGAGCAGACCTTTCGGGAGAAGGCAGCGATGCCTGTGGCCAGC
 ACCTGAACCCAGTGCAGGTGCTGCAGCTGGTGGAGGAAACGCTACCTGACAACTCAATTCTGGTGGTGG
 TGGCGGGACTTCGTGGGACTGCTGCCATCTGGTACAGCCCGCGGCCCTGCGCTGGCTCGATCCT
 GGGGCTTTGGGACTCTGGGAGTTGGTGCAGGATTTGCACTTGGGGCCAAGCTGTGCCGGCCAGATGCTG
 AGGTCTGGTGCCTGTTGGGGACGGAGCTTTGGCTACAGCCTCATCGAATTTGATACATTCGTGAGACA
 CAAGATCCAGTATGGCCTTGGTAGGGAATGATGCTGGCTGGACACAGATTTCTCGGGAGCAGGTGCC
 TCTCTGGGAGCAACGTGGCCTGTGGCCTGGCCTACACTGATTATCACAAGGCAGCCATGGTCTGGGGG
 CCCGGGGCTTGTGCTCTCACGGGAGAAGGAGTACAGTGGTCAAGGTGCTGCAGGATGCCAGCAGCA
 GTGCCGAGACGGCCACCGGTTGTGGTCAACATCCTCATTGGGAGGACGGACTTCCGCGATGGCTCCATT
 GCTGTA

ACGCGTACGCGGCCGCTCGAG – GFP Tag – GTTTAA

Protein Sequence:

>RG203987 representing NM_006844
 Red=Cloning site Green=Tags(s)

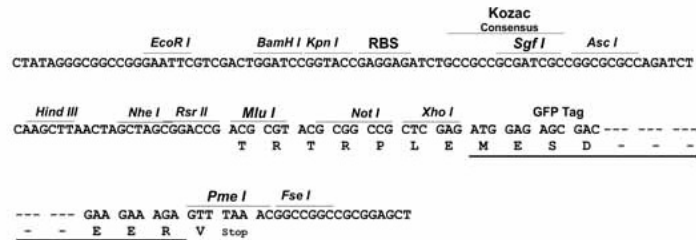
METPAAAAPAGSLFPSFLLLACGTLVAALLGAAHRLGLFYQLLHKVDKASVRHGGENVAAVLRAHGVRFI
 FTLVGGHISPLL VACEKLGIRVVDTRHEVTAVFAADAMARLSGTGVAAVTAGPGLTNTVTAVKNAQMAQ
 SPIILLGGAASTLLQNRGALQAVDQLSLFRPLCKFCVSVRRVRDIVPTLRAAMAAAQSGTPGPVVELPV
 DVLYPYFMVQKEMVPAKPPKGLVGRVVSWYLENYLANL FAGAWEPQPEGPLPLDIPQASPQQVQRCVEIL
 SRAKRPLMVLGSQALLTPTSADKLRAAVETLGVPCFLGGMARGLLGRNHPLHIRENRSALKKADVIVLA
 GTVCDFRLSYGRVLSHSSKIIIVNRNREEMLLNSDIFWKPQEAVQGDVGSFVCLKLVEGLQGQWAPDWVE
 ELREADRQKEQTFREKAAMPVAQHLNPVQVLQVEETLPDNSILVVDGGDFVGTAAHLVQPRGPLRWLDP
 GAFGTLGVGAGFALGAKLCRPDAEVWCLFGDGAFGYSLIEFDTFVRHKIPVMALVGNDAWGTQISREQVP
 SLGNSNVACGLAYTDYHKAAMGLGARGLLL SRENEDQVVKVLHDAQQCRDGHVNVNIIIGRTDFRDGSI
 AV

TRTRPLE – GFP Tag – V

Restriction Sites: SgfI-MluI

Cloning Scheme:

Cloning sites used for ORF Shutting:



ACCN: NM_006844

ORF Size: 1896 bp

OTI Disclaimer: The molecular sequence of this clone aligns with the gene accession number as a point of reference only. However, individual transcript sequences of the same gene can differ through naturally occurring variations (e.g. polymorphisms), each with its own valid existence. This clone is substantially in agreement with the reference, but a complete review of all prevailing variants is recommended prior to use. [More info](#)

OTI Annotation: This clone was engineered to express the complete ORF with an expression tag. Expression varies depending on the nature of the gene.

Components: The ORF clone is ion-exchange column purified and shipped in a 2D barcoded Matrix tube containing 10ug of transfection-ready, dried plasmid DNA (reconstitute with 100 ul of water).

Reconstitution Method:

1. Centrifuge at 5,000xg for 5min.
2. Carefully open the tube and add 100ul of sterile water to dissolve the DNA.
3. Close the tube and incubate for 10 minutes at room temperature.
4. Briefly vortex the tube and then do a quick spin (less than 5000xg) to concentrate the liquid at the bottom.
5. Store the suspended plasmid at -20°C. The DNA is stable for at least one year from date of shipping when stored at -20°C.

RefSeq: [NM_006844.2](#)

RefSeq Size: 2328 bp

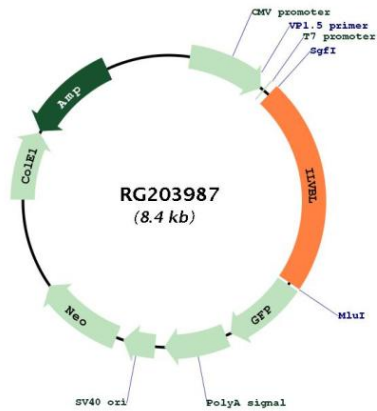
RefSeq ORF: 1899 bp

Locus ID: 10994

UniProt ID: [A1L0T0](#)

Cytogenetics: 19p13.12
Domains: TPP_enzymes
Protein Families: Transmembrane
Gene Summary: The protein encoded by this gene shares similarity with several thiamine pyrophosphate-binding proteins identified in bacteria, yeast, and plants. The highest degree of similarity is found with bacterial acetolactate synthases (AHAS), which are enzymes that catalyze the first step in branched-chain amino acid biosynthesis. [provided by RefSeq, Jul 2008]

Product images:



Circular map for RG203987