

Product datasheet for **RG203980**

TMEM100 (NM_018286) Human Tagged ORF Clone

Product data:

Product Type: Expression Plasmids
Product Name: TMEM100 (NM_018286) Human Tagged ORF Clone
Tag: TurboGFP
Symbol: TMEM100
Mammalian Cell Selection: Neomycin
Vector: pCMV6-AC-GFP (PS100010)
E. coli Selection: Ampicillin (100 ug/mL)
ORF Nucleotide Sequence: >RG203980 representing NM_018286
 Red=Cloning site Blue=ORF Green=Tags(s)

TTTTGTAAACGACTCACTATAGGGCGGCCGGAATTCGTCGACTGGATCCGGTACCGAGGAGATCTGCC
 GCC**CGATCGCC**

ATGACTGAAGAGCCCATCAAGGAGATCCTGGGAGCCCCAAAGGCTCACATGGCAGCGACGATGGAGAAGA
 GCCCCAAGAGTGAAGTTGTGATCACCACAGTCCCTCTGGTCAGTGAGATTCAGTTGATGGCTGCTACAGG
 GGGTACCGAGCTCTCTGCTACCGCTGCATCATCCCTTTGCTGTGGTTGTCTTCATCGCCGGCATCGTG
 GTCACCGCGGTGGCTTACAGCTTCAATCCCATGGGTCTATTATCTCCATCTTTGGCCTGGTTGTTCTGT
 CATCTGGACTTTTTTACTAGCCTCCAGTGCCTTGTGCTGGAAAGTGAGACAAAGGAGCAAGAAAGCCAA
 GAGACGGGAGAGTCAAACAGCTCTCGTGGCAAATCAGAGAAGCTTGTGTTGCT

ACGCGTACGCGGCCGCTCGAG - GFP Tag - GTTTAA

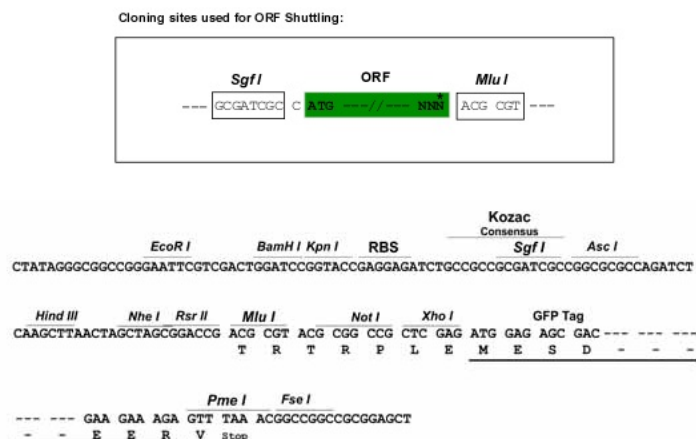
Protein Sequence: >RG203980 representing NM_018286
 Red=Cloning site Green=Tags(s)
 MTEEPIKEILGAPKAHMAATMEKSPKSEVVITTVPLVSEIQLMAATGGTELSCYRCIIPFVVVFIAGIV
 VTAVAYSFNSHGSIIISIFGLVVLSSGLFLLASSALCWKVRQRSKKAKRRESQTALVANQRSLFA

TRTRPLE - GFP Tag - V

Restriction Sites: SgfI-MluI



[View online »](#)

Cloning Scheme:


ACCN: NM_018286

ORF Size: 402 bp

OTI Disclaimer: The molecular sequence of this clone aligns with the gene accession number as a point of reference only. However, individual transcript sequences of the same gene can differ through naturally occurring variations (e.g. polymorphisms), each with its own valid existence. This clone is substantially in agreement with the reference, but a complete review of all prevailing variants is recommended prior to use. [More info](#)

OTI Annotation: This clone was engineered to express the complete ORF with an expression tag. Expression varies depending on the nature of the gene.

Components: The ORF clone is ion-exchange column purified and shipped in a 2D barcoded Matrix tube containing 10ug of transfection-ready, dried plasmid DNA (reconstitute with 100 ul of water).

Reconstitution Method:

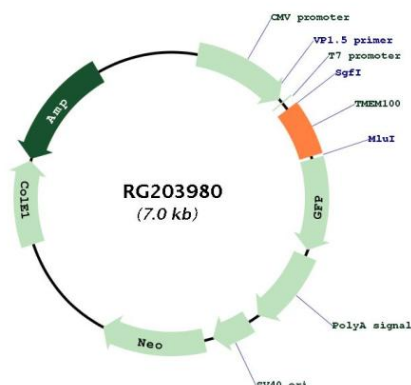
1. Centrifuge at 5,000xg for 5min.
2. Carefully open the tube and add 100ul of sterile water to dissolve the DNA.
3. Close the tube and incubate for 10 minutes at room temperature.
4. Briefly vortex the tube and then do a quick spin (less than 5000xg) to concentrate the liquid at the bottom.
5. Store the suspended plasmid at -20°C. The DNA is stable for at least one year from date of shipping when stored at -20°C.

RefSeq: [NM_018286.3](#)

RefSeq Size: 1670 bp

RefSeq ORF:	405 bp
Locus ID:	55273
UniProt ID:	Q9NV29
Cytogenetics:	17q22
Protein Families:	Transmembrane
Gene Summary:	Plays a role during embryonic arterial endothelium differentiation and vascular morphogenesis through the ACVRL1 receptor-dependent signaling pathway upon stimulation by bone morphogenetic proteins, such as GDF2/BMP9 and BMP10. Involved in the regulation of nociception, acting as a modulator of the interaction between TRPA1 and TRPV1, two molecular sensors and mediators of pain signals in dorsal root ganglia (DRG) neurons. Mechanistically, it weakens their interaction, thereby releasing the inhibition of TRPA1 by TRPV1 and increasing the single-channel open probability of the TRPA1-TRPV1 complex. [UniProtKB/Swiss-Prot Function]

Product images:



Circular map for RG203980