

Product datasheet for **RG203974**

SPOCK2 (NM_014767) Human Tagged ORF Clone

Product data:

Product Type: Expression Plasmids
Product Name: SPOCK2 (NM_014767) Human Tagged ORF Clone
Tag: TurboGFP
Symbol: SPOCK2
Synonyms: testican-2
Mammalian Cell Selection: Neomycin
Vector: pCMV6-AC-GFP (PS100010)
E. coli Selection: Ampicillin (100 ug/mL)
ORF Nucleotide Sequence: >RG203974 representing NM_014767
Red=Cloning site Blue=ORF Green=Tags(s)

TTTTGTAATACGACTCACTATAGGGCGGCCGGAATTCGTCGACTGGATCCGGTACCGAGGAGATCTGCC
GCC**CGATCGCC**

ATGCGCGCCCCAGGCTGCGGGCGGCTGGTGTGCCGCTGCTCCTGGCCGCGGCAGCCCTGGCCGAAG
GCGACGCCAAGGGGCTCAAGGAGGGCGAGACCCCGCAATTTTCATGGAGGACGAGCAATGGCTGTCGTC
CATCTCGAGTACAGCGGCAAGATCAAGCACTGGAACCGCTTCCGAGACGAAGTGGAGGATGACTATATC
AAGAGCTGGGAGGACAATCAGCAAGGAGATGAAGCCCTGGATACCACCAAGGACCCCTGCCAGAAGTGA
AGTGCAGCGGCCACAAGGTGTGCAATGCCAGGGCTACCAGCGGCCATGTGCATCAGTCGCAAGAAGCT
GGAGCACAGGATCAAGCAGCCGACCGTGAACCTCCATGGAACAAGACTCCATCTGCAAGCCCTGCCAC
ATGGCCCAGCTTGCCCTGTCTGCGGCTCAGATGGCCACACTTACAGCTCTGTGTGAAGCTGGAGCAAC
AGGCGTGCCTGAGCAGCAAGCAGCTGGCGGTGCGATGCGAGGGCCCTGCCCTGCCACGGAGCAGGC
TGCCACCTCCACCGCGATGGCAAACAGAGACTTGCACCGGTACAGGACCTGGCTGACCTGGGAGATCGG
CTGCGGGACTGGTTCAGCTCCTTCATGAGAACTCCAAGCAGAATGGCTCAGCCAGCAGTGTAGCCGGCC
CGGCCAGCGGGCTGGACAAGAGCCTGGGGGCCAGCTGCAAGGACTCCATTGGCTGGATGTCTCCAAGCT
GGACACCAAGTGTGACCTCTTCTGGACCAGACGGAGCTGGCCGCCATCAACCTGGACAAGTACGAGGTC
TGCATCCGTCCTTCTCAACTCCTGTGACACCTACAAGGATGGCCGGTCTCTACTGCTGAGTGGTGTCT
TCTGCTTCTGGAGGGAGAAGCCCCCTGCCTGGCAGAGCTGGAGCGCATCCAGATCCAGGAGCCGCCAA
GAAGAAGCCAGGCATCTTCATCCGAGCTGCGACGAGGATGGCTACTACCGGAAGATGCAGTGTGACCAG
AGCAGCGGTGACTGCTGGTGTGTGGACCAGCTGGGCTGGAGCTGACTGGCACGCGCACGCATGGGAGCC
CCGACTGCGATGACATCGTGGGCTTCTCGGGGACTTTGGAAGCGGTGTCGGCTGGGAGGATGAGGAGGA
GAAGGAGACGGAGGAAGCAGGCGAGGAGGCCGAGGAGGAGGGCGAGGCAGGCAGGCTGACGACGGG
GGCTACATCTGG

ACGCGTACGCGGCCGCTCGAG - GFP Tag - GTTTAA



[View online >](#)

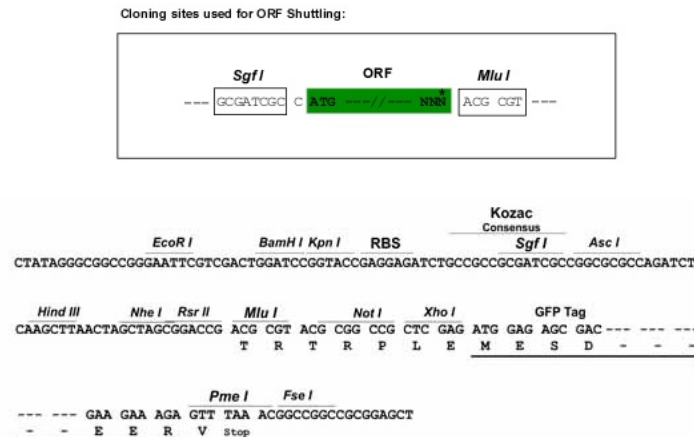
Protein Sequence: >RG203974 representing NM_014767
 Red=Cloning site Green=Tags(s)

MRAPGCGRLVLP LLLLLAAAAAEGDAKGLKEGETPGNFMEDQWLSSISQYSGKIKHWNFRDEVEDDYI
 KSWEDNQGDALDTTKDPCKVKCSRHKVCIAQGYQRAMCISRKKLEHRIKQPTVKLHGNKDSICKPCH
 MAQLASVCGSDGHTYSSVCKLEQQACLSSKQLAVRCEGPCPCPTEQAATSTADGKPETCTGQDLADLADR
 LRDWFQLLHENSQKNGSASSVAGPAGLDKSLGASCKDSIGWFMFKLDTADLFLDQTELAAILNDKYEY
 CIRPFFNSCDTYKDRVSTAEWCFWFREKPPCLAELERIQIQEAAKKPGIFIPSCDEDEGYRKMQCQDQ
 SSGDCWCVDQLGLELGTGRTHGSPDCDDIVGFSGDFGSGVWGEDEEEKETEEAGEAEEEEEGEAGEADDG
 GYIW

TRTRPLE - GFP Tag - V

Restriction Sites: SgfI-MluI

Cloning Scheme:



ACCN: NM_014767

ORF Size: 1272 bp

OTI Disclaimer: The molecular sequence of this clone aligns with the gene accession number as a point of reference only. However, individual transcript sequences of the same gene can differ through naturally occurring variations (e.g. polymorphisms), each with its own valid existence. This clone is substantially in agreement with the reference, but a complete review of all prevailing variants is recommended prior to use. [More info](#)

OTI Annotation: This clone was engineered to express the complete ORF with an expression tag. Expression varies depending on the nature of the gene.

Components: The ORF clone is ion-exchange column purified and shipped in a 2D barcoded Matrix tube containing 10ug of transfection-ready, dried plasmid DNA (reconstitute with 100 ul of water).

Reconstitution Method:

1. Centrifuge at 5,000xg for 5min.
2. Carefully open the tube and add 100ul of sterile water to dissolve the DNA.
3. Close the tube and incubate for 10 minutes at room temperature.
4. Briefly vortex the tube and then do a quick spin (less than 5000xg) to concentrate the liquid at the bottom.
5. Store the suspended plasmid at -20°C. The DNA is stable for at least one year from date of shipping when stored at -20°C.

RefSeq: [NM_014767.1](#), [NP_055582.1](#)

RefSeq Size: 5316 bp

RefSeq ORF: 1275 bp

Locus ID: 9806

UniProt ID: [Q92563](#)

Cytogenetics: 10q22.1

Domains: thyroglobulin_1, kazal

Protein Families: Secreted Protein

Gene Summary: This gene encodes a protein which binds with glycosaminoglycans to form part of the extracellular matrix. The protein contains thyroglobulin type-1, follistatin-like, and calcium-binding domains, and has glycosaminoglycan attachment sites in the acidic C-terminal region. Three alternatively spliced transcript variants that encode different protein isoforms have been described for this gene. [provided by RefSeq, Oct 2011]

Product images:



Circular map for RG203974