

## Product datasheet for **RG203967**

### CHMP6 (NM\_024591) Human Tagged ORF Clone

#### Product data:

**Product Type:** Expression Plasmids  
**Product Name:** CHMP6 (NM\_024591) Human Tagged ORF Clone  
**Tag:** TurboGFP  
**Symbol:** CHMP6  
**Synonyms:** VPS20  
**Mammalian Cell Selection:** Neomycin  
**Vector:** pCMV6-AC-GFP (PS100010)  
**E. coli Selection:** Ampicillin (100 ug/mL)  
**ORF Nucleotide Sequence:** >RG203967 representing NM\_024591  
 Red=Cloning site Blue=ORF Green=Tags(s)

TTTTGTAATACGACTCACTATAGGGCGGCCGGAATTCGTCGACTGGATCCGGTACCGAGGAGATCTGCC  
 GCC**CGATCGCC**

ATGGGTAACTGTTCCGGCCGAAGAAGCAGAGCCCGTACGGAGCAGGACAAGGCCATCTGCAACTGA  
 AGCAGCAGCGGGACAAGCTGAGGCAGTACCAGAAGAGGATCGCCAGCAGCTGGAGCGGAGCGGCCCT  
 GGCCCGCAGCTGCTGCGGGACGGCAGGAAGGAACGGGCAAGCTGCTGCTCAAGAAGAAGCGATACCAG  
 GAGCAGCTCCTGGACAGGACGGAGAACCAGATCAGCAGCCTGGAGGCCATGGTTCAGAGTATTGAGTTCA  
 CCCAGATCGAAATGAAAGTGATGGAGGGGCTGCAGTTTGGAAATGAGTGTCTGAACAAGATGCACCAGGT  
 GATGTCCATTGAAGAGGTGGAGAGGATCCTGGACGAGACGAGGAGGCCGTGGAGTACCAGCGGCAATA  
 GACGAGCTCCTGGCAGGAAGCTTCACTCAGGAGGATGAAGACGCCATCCTGGAGGAGCTGAGCGCAATCA  
 CTCAGGAACAAATAGAGCTGCCAGAGGTTCCCTCCGAGCCCTTCTGAGAAGATCCCAGAAAACGTCCC  
 TGTC AAGGCCAGGCCAGGCAGGCGGAGCTGGTGGCAGCTTCG

**ACGCGTACGCGGCCGCTCGAG** - GFP Tag - GTTTAA

**Protein Sequence:** >RG203967 representing NM\_024591  
 Red=Cloning site Green=Tags(s)

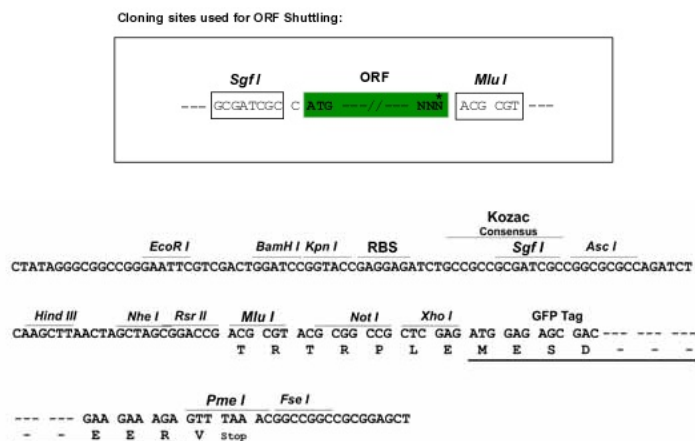
MGNLFGRKKQSRVTEQDKAILQLKQQRDKLRQYQKRIAQQLERERALARQLLRDGRKERAKLLKPKRYQ  
 EQLLDRTENQISSLEAMVQSIIEFTQIEMKVMGLQFGNECLNKMHVMSIEEVERILDETQEA VEYQRQI  
 DELLAGSFTQEDEDAILEELSAITQEIQIELPEVPSEPLPEKIPENVPVKARPRQAE LVAAS

**TRTRPLE** - GFP Tag - V

**Restriction Sites:** SgfI-MluI



[View online »](#)

**Cloning Scheme:**


**ACCN:** NM\_024591

**ORF Size:** 603 bp

**OTI Disclaimer:** The molecular sequence of this clone aligns with the gene accession number as a point of reference only. However, individual transcript sequences of the same gene can differ through naturally occurring variations (e.g. polymorphisms), each with its own valid existence. This clone is substantially in agreement with the reference, but a complete review of all prevailing variants is recommended prior to use. [More info](#)

**OTI Annotation:** This clone was engineered to express the complete ORF with an expression tag. Expression varies depending on the nature of the gene.

**Components:** The ORF clone is ion-exchange column purified and shipped in a 2D barcoded Matrix tube containing 10ug of transfection-ready, dried plasmid DNA (reconstitute with 100 ul of water).

**Reconstitution Method:**

1. Centrifuge at 5,000xg for 5min.
2. Carefully open the tube and add 100ul of sterile water to dissolve the DNA.
3. Close the tube and incubate for 10 minutes at room temperature.
4. Briefly vortex the tube and then do a quick spin (less than 5000xg) to concentrate the liquid at the bottom.
5. Store the suspended plasmid at -20°C. The DNA is stable for at least one year from date of shipping when stored at -20°C.

**RefSeq:** [NM\\_024591.5](#)

**RefSeq Size:** 1647 bp

**RefSeq ORF:** 606 bp

**Locus ID:** 79643

**UniProt ID:** [Q96FZ7](#)

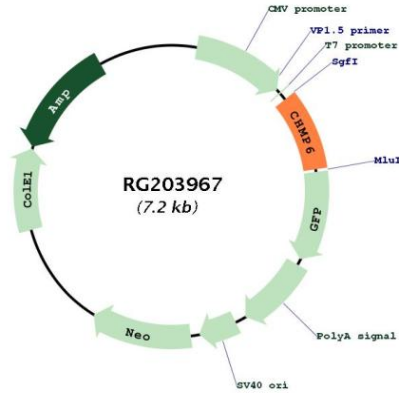
**Cytogenetics:** 17q25.3

Domains: SNF7

Protein Pathways: Endocytosis

Gene Summary: This gene encodes a member of the chromatin-modifying protein/charged multivesicular body protein family. Proteins in this family are part of the ESCRT-III (endosomal sorting complex required for transport III) which degrades surface receptors, and in biosynthesis of endosomes. [provided by RefSeq, Mar 2012]

**Product images:**



Circular map for RG203967