

## Product datasheet for **RG203963**

### WDR61 (NM\_025234) Human Tagged ORF Clone

#### Product data:

Product Type:	Expression Plasmids
Product Name:	WDR61 (NM_025234) Human Tagged ORF Clone
Tag:	TurboGFP
Symbol:	WDR61
Synonyms:	REC14; SKI8
Mammalian Cell Selection:	Neomycin
Vector:	pCMV6-AC-GFP (PS100010)
E. coli Selection:	Ampicillin (100 ug/mL)
ORF Nucleotide Sequence:	>RG203963 representing NM_025234 Red=Cloning site Blue=ORF Green=Tags(s)

TTTTGTAATACGACTCACTATAGGGCGGCCGGAATTCGTCGACTGGATCCGGTACCGAGGAGATCTGCC  
GCC**CGATCGCC**

ATGACCAACCAAGTACGGTATTCTCTTCAAACAAGAGCAAGCCCATGATGATGCCATTTGGTCAGTTGCTT  
GGGGGACAAACAAGAAGGAAAACCTGAGACAGTGGTCACAGGCTCCCTAGATGACCTGGTGAAGGTCTG  
GAAATGGCGTGATGAGAGGCTGGACCTACAGTGGAGTCTGGAGGGACATCAGCTGGGAGTGGTGTCTGTG  
GACATCAGCCACACCCTGCCATTGCTGCATCCAGCTCTCTTGATGCTCATATTCGTCTTTGGGACTTGG  
AAAATGGCAAACAGATAAAGTCCATAGATGCAGGACCTGTGGATGCCTGGACTTTGGCCTTTTCTCCTGA  
TTCCCAGTATCTGGCCACAGGAACCTCATGTCGGGAAAGTGAACATTTTTGGTGTGAAAGTGGGAAAAAG  
GAATATCTTTGGACACGAGAGGAAAATTCATTCTTAGTATTGCATATAGTCTGATGGGAAATACCTAG  
CCAGTGGAGCCATAGATGGAATCATCAATATTTTTGATATTGCAACTGGAAAACCTCTGCATACCCTGGA  
AGGCCATGCCATGCCATTGCTCCTTGACCTTTCCCGGACTCCCAGCTCCTTGCTCACTGCTTCAGAT  
GATGGCTACATCAAGATCTATGATGTACAACATGCCAATTTGGCTGGCAGCTGAGCGGCCATGCCTCCT  
GGGTGCTGAACGTTGCATTCTGCTCCTGATGACACTCACTTTGTTCCAGTTCGTCTGACAAAAGTGTA  
AGTTTGGGATGTTGGAACGAGGACTTGTGTTACACCTTCTTTGATCACCAGGATCAGGTCTGGGGAGTA  
AAATACAATGAAATGGTTCAAAAATTGTCTGTTGGAGATGACCAGGAAATTCACATCTATGATTGTC  
CAATT

**ACGCGT**ACGCGGCCGCTCGAG - GFP Tag - GTTTAA



[View online »](#)

**Protein Sequence:** >RG203963 representing NM\_025234  
Red=Cloning site Green=Tags(s)

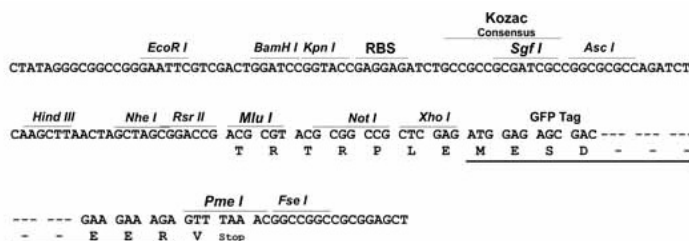
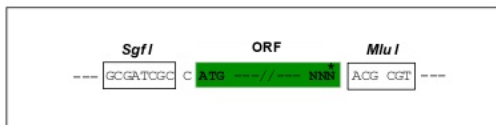
MTNQYGILFKQEQAHDDAIWSVAWGNTNKKENSETVVTGSLDDLKVKVWKRDERLDLQWSLEGHQLGVVSV  
 DISHTLPIAASSSLDAHIRLWDLENGKQIKSIDAGPVDATLAFSPDSQYLATGTHVGKVNIFGVESGKK  
 EYSLDTRGKFILSIAYSPDGKYLASGAIDGIINIFDIATGKLLHTLEGHAMPIRSLTFSPDSQLLVTASD  
 DGYIKIYDVQHANLAGTLSGHASWYLNVAFCPDDTHFVSSSSDKSVKVDVGTRTCVTHTFFDHQDQVWGV  
 KYNGNGSKIVSVGDDQEIHIYDCPI

TRTRPLE - GFP Tag - V

**Restriction Sites:** SgfI-MluI

**Cloning Scheme:**

Cloning sites used for ORF Shuttling:



**ACCN:** NM\_025234

**ORF Size:** 915 bp

**OTI Disclaimer:** The molecular sequence of this clone aligns with the gene accession number as a point of reference only. However, individual transcript sequences of the same gene can differ through naturally occurring variations (e.g. polymorphisms), each with its own valid existence. This clone is substantially in agreement with the reference, but a complete review of all prevailing variants is recommended prior to use. [More info](#)

**OTI Annotation:** This clone was engineered to express the complete ORF with an expression tag. Expression varies depending on the nature of the gene.

**Components:** The ORF clone is ion-exchange column purified and shipped in a 2D barcoded Matrix tube containing 10ug of transfection-ready, dried plasmid DNA (reconstitute with 100 ul of water).

**Reconstitution Method:**

1. Centrifuge at 5,000xg for 5min.
2. Carefully open the tube and add 100ul of sterile water to dissolve the DNA.
3. Close the tube and incubate for 10 minutes at room temperature.
4. Briefly vortex the tube and then do a quick spin (less than 5000xg) to concentrate the liquid at the bottom.
5. Store the suspended plasmid at -20°C. The DNA is stable for at least one year from date of shipping when stored at -20°C.

**RefSeq:** [NM\\_025234.3](#)

**RefSeq Size:** 1205 bp

**RefSeq ORF:** 918 bp

**Locus ID:** 80349

**UniProt ID:** [Q9GZS3](#)

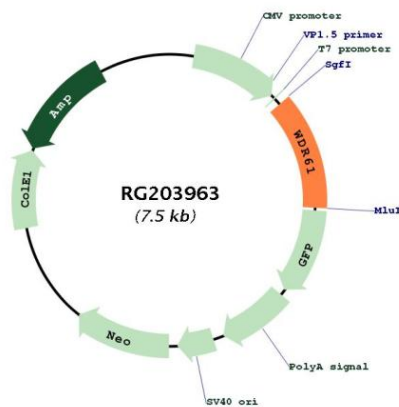
**Cytogenetics:** 15q25.1

**Domains:** WD40

**Protein Pathways:** RNA degradation

**Gene Summary:** WDR61 is a subunit of the human PAF and SKI complexes, which function in transcriptional regulation and are involved in events downstream of RNA synthesis, such as RNA surveillance (Zhu et al., 2005 [PubMed 16024656]).[supplied by OMIM, Mar 2008]

### Product images:



Circular map for RG203963