

## Product datasheet for **RG203955**

### WBP2 (NM\_012478) Human Tagged ORF Clone

#### Product data:

Product Type:	Expression Plasmids
Product Name:	WBP2 (NM_012478) Human Tagged ORF Clone
Tag:	TurboGFP
Symbol:	WBP2
Synonyms:	DFNB107; GRAMD6; WBP-2
Mammalian Cell Selection:	Neomycin
Vector:	pCMV6-AC-GFP (PS100010)
E. coli Selection:	Ampicillin (100 ug/mL)
ORF Nucleotide Sequence:	>RG203955 representing NM_012478 Red=Cloning site Blue=ORF Green=Tags(s)

TTTTGTAATACGACTCACTATAGGGCGGCCGGAATTCGTCGACTGGATCCGGTACCGAGGAGATCTGCC  
GCC**CGATCGCC**

ATGGCGCTCAACAAGAATCACTCGGAGGGCGGGGAGTGATCGTCAATAACACCGAGAGCATCCTAATGT  
CCTATGATCACGTGGAACCTCACATTCAATGACATGAAGAACGTGCCAGAAGCCTTCAAAGGGACCAAGAA  
AGGCATGTCTACCTTACCCCTTACCGGGTCATCTTTCTGTCCAAGGGCAAGGATGCCATGCAGTCCTTC  
ATGATGCCATTTTATCTCATGAAAGACTGTGAGATCAAGCAGCCCGTATTTGGTGCAAACACATCAAGG  
GAACAGTGAAGGCGGAAGCGGGAGGTGGCTGGGAAGGCTCTGCTTCTACAAGTTGACTTTCACGGCAGG  
GGGCGCCATTGAGTTCGACAGCGGATGCTCCAGGTGGCATCTCAAGCCTCCAGAGGTGAAGTCCCCAGT  
GGAGCCTATGGCTACTCTTACATGCCACGCGGGGCTATGTCTATCCCCCGCCAGTCGCCAATGGAATGT  
ACCCCTGCCCTCCTGGCTACCCCTATCCACCGCCCCACCTGAGTTCTATCCAGGACCCCCATGATGGA  
CGGGGCCATGGGATACGTGCAGCCCCACCACCGCCCTACCCTGGGCCCATGGAACCTCCGGTCAGCGGC  
CCCGATGTCCCTCCACTCCTGCAGCCGAAGCCAAGGCCGAGAAGCAGCCGCCAGCGCCTATTACAACC  
CAGGCAATCCTCACAACGTCTACATGCCACGAGCCGCGCCGACCTCCCTACTACCCACCGGAAGA  
TAAGAAGACCCAG

**ACGCGT**ACGCGGCCGCTCGAG - GFP Tag - GTTTAA



[View online »](#)

**Protein Sequence:** >RG203955 representing NM\_012478  
Red=Cloning site Green=Tags(s)

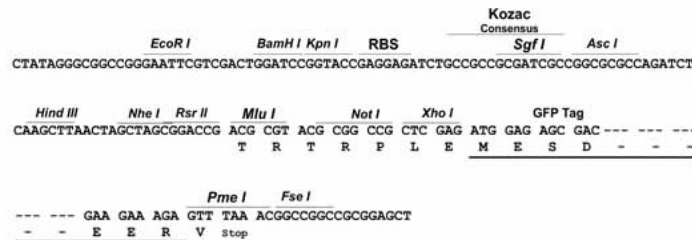
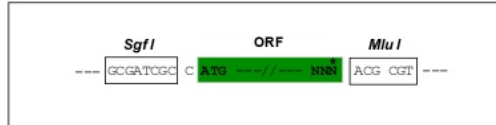
```
MALNKNHSEGGGVIVNNTESILMSYDHVELTFNDMKNVPEAFKGTKKGTVYLTPYRVIFLSKGGKAMQSF
MMPFYLMKDCEIKQPVFGANYIKGTVKAEAGGGWEGSASYKLTFTAGGAIIEFGQRMQLQVASQASRGEVPS
GAYGYSYMPGAYVYPPPVANGMYPCPPGYPPPPPEFYPGPPMMDGAMGYVQPPPPPYPGMEPPVSG
PDVVPSTPAAEAKAAEAAAAYNPGNPHNVYMPSTQPPPPPYPPEDKKTQ
```

TRTRPLE - GFP Tag - V

**Restriction Sites:** SgfI-MluI

**Cloning Scheme:**

Cloning sites used for ORF Shutting:



**ACCN:** NM\_012478

**ORF Size:** 783 bp

**OTI Disclaimer:** The molecular sequence of this clone aligns with the gene accession number as a point of reference only. However, individual transcript sequences of the same gene can differ through naturally occurring variations (e.g. polymorphisms), each with its own valid existence. This clone is substantially in agreement with the reference, but a complete review of all prevailing variants is recommended prior to use. [More info](#)

**OTI Annotation:** This clone was engineered to express the complete ORF with an expression tag. Expression varies depending on the nature of the gene.

**Components:** The ORF clone is ion-exchange column purified and shipped in a 2D barcoded Matrix tube containing 10ug of transfection-ready, dried plasmid DNA (reconstitute with 100 ul of water).

**Reconstitution Method:**

1. Centrifuge at 5,000xg for 5min.
2. Carefully open the tube and add 100ul of sterile water to dissolve the DNA.
3. Close the tube and incubate for 10 minutes at room temperature.
4. Briefly vortex the tube and then do a quick spin (less than 5000xg) to concentrate the liquid at the bottom.
5. Store the suspended plasmid at -20°C. The DNA is stable for at least one year from date of shipping when stored at -20°C.

**RefSeq:** [NM\\_012478.4](#)

**RefSeq Size:** 1944 bp

**RefSeq ORF:** 786 bp

**Locus ID:** 23558

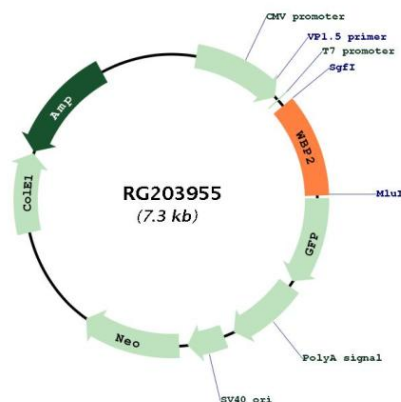
**UniProt ID:** [Q969T9](#)

**Cytogenetics:** 17q25.1

**Domains:** GRAM

**Gene Summary:** The globular WW domain is composed of 38 to 40 semiconserved amino acids shared by proteins of diverse functions including structural, regulatory, and signaling proteins. The domain is involved in mediating protein-protein interactions through the binding of polyproline ligands. This gene encodes a WW domain binding protein that is a transcriptional coactivator of estrogen receptor alpha and progesterone receptor. Defects in this gene have been associated with hearing impairment. [provided by RefSeq, Jan 2017]

## Product images:



Circular map for RG203955