

## Product datasheet for **RG203941**

### Clusterin (CLU) (NM\_203339) Human Tagged ORF Clone

#### Product data:

Product Type:	Expression Plasmids
Product Name:	Clusterin (CLU) (NM_203339) Human Tagged ORF Clone
Tag:	TurboGFP
Symbol:	Clusterin
Synonyms:	AAG4; APOJ; CLI; KUB1; MGC24903; SGP-2; SGP2; SP-40; TRPM-2; TRPM2
Mammalian Cell Selection:	Neomycin
Vector:	pCMV6-AC-GFP (PS100010)
E. coli Selection:	Ampicillin (100 ug/mL)



[View online »](#)

**ORF Nucleotide Sequence:**

>RG203941 representing NM\_203339  
 Red=Cloning site Blue=ORF Green=Tags(s)

TTTTGTAATACGACTCACTATAGGGCGGCCGGGAATTCGTCGACTGGATCCGGTACCGAGGAGATCTGCC  
 GCC**CGGATCGCC**

ATGATGAAGACTCTGCTGCTGTTTGTGGGGCTGCTGCTGACCTGGGAGAGTGGGCAGTCTCTGGGGACC  
 AGACGGTCTCAGACAATGAGCTCCAGGAAATGTCCAATCAGGGAAGTAAGTACGTCAATAAGGAAATTC  
 AAATGCTGTCAACGGGGTGAACAGATAAAGACTCTCATAGAAAAACAACGAAGAGCGCAAGACTG  
 CTCAGCAACCTAGAAGAAGCCAAGAAGAAGAAAGAGGATGCCCTAAATGAGACCAGGGAATCAGAGACAA  
 AGCTGAAGGAGCTCCAGGAGTGTGCAATGAGACCATGATGGCCCTCTGGGAAGAGTGAAGCCCTGCCT  
 GAAACAGACCTGCATGAAGTTCTACGCACGCTGTCAGAAAGTGGCTCAGGCCTGGTTGGCCGCCAGCTT  
 GAGGAGTTCCTGAACCAGAGCTCGCCCTTCTACTTCTGGATGAATGGTGACCGCATCGACTCCCTGCTGG  
 AGAACGACCGGCAGCAGACGCACATGCTGGATGTCATGCAGGACCACTTCAGCCGCGCTCCAGCATCAT  
 AGACGAGCTCTCCAGGACAGGTTCTTCCACCGGAGCCCAAGGATACCTACCACTACCTGCCCTTCTCAGC  
 CTGCCACCGGAGGCCCTCACTTCTTCTTCCCAAGTCCCGCATCGTCCGAGCTTGATGCCCTTCTCTC  
 CGTACGAGCCCTGAACTTCCACGCCATGTTCCAGCCCTTCTTGAGATGATACACGAGGCTCAGCAGGC  
 CATGGACATCCACTTCCACAGCCCGGCCTTCCAGCACCCGCCAACAGAATTCATACGAGAAGGCGCAGAT  
 GACCGGACTGTGTGCCGGGAGATCCGCCACAATCCACGGGCTGCCTGCGGATGAAGGACCAGTGTGACA  
 AGTGCCGGGAGATCTTGTCTGTGGACTGTTCCACCAACAACCCCTCCAGGCTAAGCTGCGGCGGGAGCT  
 CGACGAATCCCTCCAGGTCGCTGAGAGGTTGACCAGGAAATAACGAGCTGCTAAAGTCTACCACTGG  
 AAGATGCTCAACACCTCCTCCTGTGAGCAGCTGAACGAGCAGTTAACTGGGTGCCGGCTGGCAA  
 ACCTCACGAAGGCGAAGACCACTACTATCTGCGGGTACCACGGTGGCTCCACACTTCTGACTCGGA  
 CGTTCCTTCCGGTGTCACTGAGGTGGTCTGAAGCTCTTGGACTCTGATCCCATCACTGTGACGGTCCCT  
 GTAGAAGTCTCCAGGAAGAACCCTAAATTTATGGAGACCGTGGCGGAGAAAGCGCTGCAGGAATACCGCA  
 AAAAGCACCGGGAGGAG

AG**CGGACCG**ACGCGTACGCGGCCGCTCGAG - GFP Tag - GTTTAA

**Protein Sequence:**

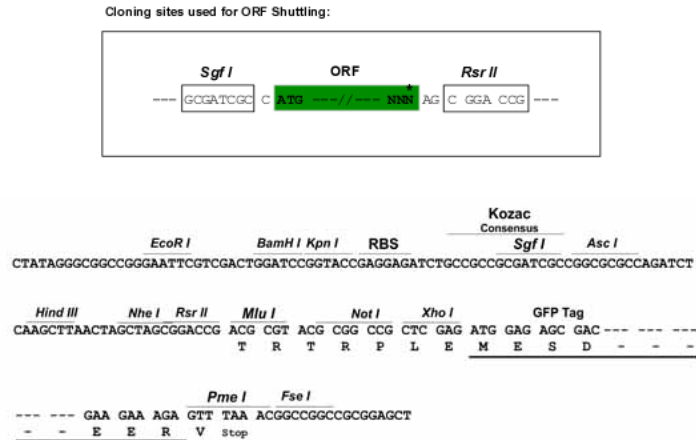
>RG203941 representing NM\_203339  
 Red=Cloning site Green=Tags(s)

MMKLLLLFVGLLLTWESGQVLGDQTVSDNELQEMSNQGSKYVNKEIQNAVNGVKQIKTLIEKTNEERKTL  
 LSNLEEAKKKKEDALNETRESETKLKEKELPGVCNETMMALWEECKPCLKQTCMKFYARVCRSGSLVGRQL  
 EEFLNQSSPFYFWMNGDRIDSLLENDRQQTHMLDVMQDHF SRASSIIDELFQDRFFTREPQDTHYLPFS  
 LPHRRPHFFFPKSRIVRSLMPFSPYEPLNFHAMFQPFLEMIHEAQQAMDIFHSPAFQHPPTFEIREGDD  
 DRTVCREIRHNSTGCLRMKDQCDKREILSVDCSTNNPSQAKLRRELDLQVAERLTRKYNELLKSYQW  
 KMLNNTSSLLEQLNEQFNWVSRLANLTQGEDQYLRVTTVASHTSDSDVPSGVTEVVVVKLFSDPITVTV  
 VEYSRKNPKFMETVAEKALQEYRKKHREE

SGP**TRRRLE** - GFP Tag - V

**Restriction Sites:**

Sgfl-RsrII

**Cloning Scheme:**


**ACCN:** NM\_203339

**ORF Size:** 1347 bp

**OTI Disclaimer:** The molecular sequence of this clone aligns with the gene accession number as a point of reference only. However, individual transcript sequences of the same gene can differ through naturally occurring variations (e.g. polymorphisms), each with its own valid existence. This clone is substantially in agreement with the reference, but a complete review of all prevailing variants is recommended prior to use. [More info](#)

**OTI Annotation:** This clone was engineered to express the complete ORF with an expression tag. Expression varies depending on the nature of the gene.

**Components:** The ORF clone is ion-exchange column purified and shipped in a 2D barcoded Matrix tube containing 10ug of transfection-ready, dried plasmid DNA (reconstitute with 100 ul of water).

**Reconstitution Method:**

1. Centrifuge at 5,000xg for 5min.
2. Carefully open the tube and add 100ul of sterile water to dissolve the DNA.
3. Close the tube and incubate for 10 minutes at room temperature.
4. Briefly vortex the tube and then do a quick spin (less than 5000xg) to concentrate the liquid at the bottom.
5. Store the suspended plasmid at -20°C. The DNA is stable for at least one year from date of shipping when stored at -20°C.

**RefSeq:** [NM\\_203339.1](#), [NP\\_976084.1](#)

**RefSeq Size:** 2979 bp

**RefSeq ORF:** 1349 bp

**Locus ID:** 1191

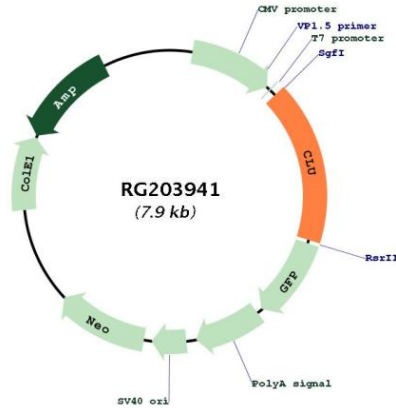
**Cytogenetics:** 8p21.1

**Protein Families:** Druggable Genome, Secreted Protein

**Gene Summary:**

The protein encoded by this gene is a secreted chaperone that can under some stress conditions also be found in the cell cytosol. It has been suggested to be involved in several basic biological events such as cell death, tumor progression, and neurodegenerative disorders. Alternate splicing results in both coding and non-coding variants.[provided by RefSeq, May 2011]

**Product images:**



Circular map for RG203941