

Product datasheet for **RG203938**

LITAF (NM_004862) Human Tagged ORF Clone

Product data:

Product Type: Expression Plasmids
Product Name: LITAF (NM_004862) Human Tagged ORF Clone
Tag: TurboGFP
Symbol: LITAF
Synonyms: PIG7; SIMPLE; TP53I7
Mammalian Cell Selection: Neomycin
Vector: pCMV6-AC-GFP (PS100010)
E. coli Selection: Ampicillin (100 ug/mL)
ORF Nucleotide Sequence: >RG203938 representing NM_004862
 Red=Cloning site Blue=ORF Green=Tags(s)

TTTTGTAATACGACTCACTATAGGGCGGCCGGAATTCGTCGACTGGATCCGGTACCGAGGAGATCTGCC
 GCC**CGATCGCC**

ATGTCGGTTCCAGGACCTTACCAGGCGGCCACTGGGCCTTCCTCAGCACCATCCGCACCTCCATCCTATG
 AAGAGACAGTGGCTGTTAACAGTTATTACCCACACCTCCAGCTCCCATGCCTGGGCCAACTACGGGGCT
 TGTGACGGGGCTGATGGGAAGGGCATGAATCCTCCTTCGTATTATACCCAGCCAGCGCCCATCCCCAAT
 AACAAATCAATTACCGTGCAGACGGTCTACGTGCAGCAGCCCATCACCTTTTGGACCGCCCTATCCAAA
 TGTGTTGTCCTTCCTGCAACAAGATGATCGTGAGTCAGCTGTCTATAACGCCGGTGCTCTGACCTGGCT
 GTCCTGCGGGAGCCTGTGCTGCTGGGGTGCATAGCGGGCTGCTGCTTCATCCCCTTCTGCGTGGATGCC
 CTCGAGGACGTGGACCATTACTGTCCCAACTGCAGAGCTCTCCTGGGCACCTACAAGCGTTTG

ACGCGTACGCGGCCGCTCGAG - GFP Tag - GTTTAA

Protein Sequence: >RG203938 representing NM_004862
 Red=Cloning site Green=Tags(s)

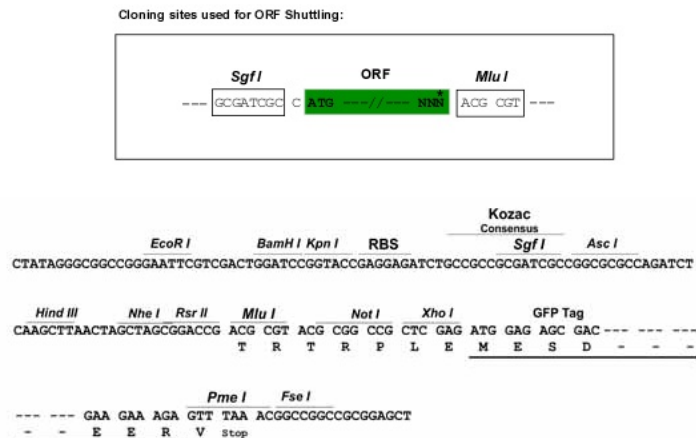
MSVPGPYQAATGPSSAPSAPPSYEETVAVNSYYTPPAPMPGPTTGLVTGPDGKGMNPPSYTQPAPIPN
 NNPITVQTYYVQHPITFLDRPIQMCCPSCNMIVSQLSYNAGALTWLSGSLCLLGCIAGCCFIPFCVDA
 LQDVVDHYCPNCRALLGTYKRL

TRTRPLE - GFP Tag - V

Restriction Sites: SgfI-MluI



[View online »](#)

Cloning Scheme:


ACCN: NM_004862

ORF Size: 483 bp

OTI Disclaimer: The molecular sequence of this clone aligns with the gene accession number as a point of reference only. However, individual transcript sequences of the same gene can differ through naturally occurring variations (e.g. polymorphisms), each with its own valid existence. This clone is substantially in agreement with the reference, but a complete review of all prevailing variants is recommended prior to use. [More info](#)

OTI Annotation: This clone was engineered to express the complete ORF with an expression tag. Expression varies depending on the nature of the gene.

Components: The ORF clone is ion-exchange column purified and shipped in a 2D barcoded Matrix tube containing 10ug of transfection-ready, dried plasmid DNA (reconstitute with 100 ul of water).

Reconstitution Method:

1. Centrifuge at 5,000xg for 5min.
2. Carefully open the tube and add 100ul of sterile water to dissolve the DNA.
3. Close the tube and incubate for 10 minutes at room temperature.
4. Briefly vortex the tube and then do a quick spin (less than 5000xg) to concentrate the liquid at the bottom.
5. Store the suspended plasmid at -20°C. The DNA is stable for at least one year from date of shipping when stored at -20°C.

Note: Plasmids are not sterile. For experiments where strict sterility is required, filtration with 0.22um filter is required.

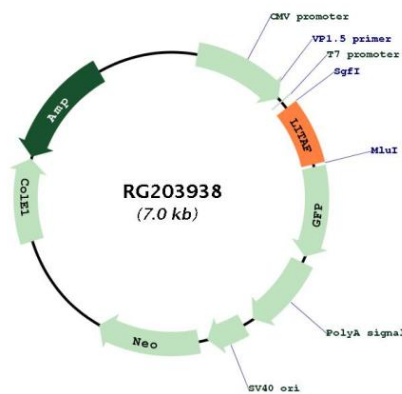
RefSeq: [NM_004862.3](#)

RefSeq Size: 2368 bp

RefSeq ORF: 486 bp

Locus ID:	9516
UniProt ID:	Q99732
Cytogenetics:	16p13.13
Domains:	LITAF
Protein Families:	Druggable Genome, Transcription Factors
Gene Summary:	Lipopolysaccharide is a potent stimulator of monocytes and macrophages, causing secretion of tumor necrosis factor-alpha (TNF-alpha) and other inflammatory mediators. This gene encodes lipopolysaccharide-induced TNF-alpha factor, which is a DNA-binding protein and can mediate the TNF-alpha expression by direct binding to the promoter region of the TNF-alpha gene. The transcription of this gene is induced by tumor suppressor p53 and has been implicated in the p53-induced apoptotic pathway. Mutations in this gene cause Charcot-Marie-Tooth disease type 1C (CMT1C) and may be involved in the carcinogenesis of extramammary Paget's disease (EMPD). Multiple alternatively spliced transcript variants have been found for this gene. [provided by RefSeq, Dec 2014]

Product images:



Circular map for RG203938