

Product datasheet for **RG203930**

PHLPP (PHLPP1) (NM_194449) Human Tagged ORF Clone

Product data:

Product Type:	Expression Plasmids
Product Name:	PHLPP (PHLPP1) (NM_194449) Human Tagged ORF Clone
Tag:	TurboGFP
Symbol:	PHLPP
Synonyms:	PHLPP; PLEKHE1; PPM3A; SCOP
Mammalian Cell Selection:	Neomycin
Vector:	pCMV6-AC-GFP (PS100010)
E. coli Selection:	Ampicillin (100 ug/mL)
ORF Nucleotide Sequence:	>RG203930 representing NM_194449 Red=Cloning site Blue=ORF Green=Tags(s)

TTTTGTAATACGACTCACTATAGGGCGGCCGGAATTCGTCGACTGGATCCGGTACCGAGGAGATCTGCC
GCC**CGATCGCC**

ATGGACTCGGAGATTGGCTGCCTCATCCGTTCTATGCAGGAAAACCTCACAGCACGGGTAGCTCTGAAC
GGATTCAGCTCTCAGGAATGTATAATGTCCGTAAGGCAAGATGCAGTTGCCAGTGAACCGATGGACAAG
ACGCCAAGTCATCCTATGTGGACCTGCCTGATAGTATCATCTGTGAAAGACAGCTTGACCGAAAAGATG
CATGTTCTGCCACTAATTGGTGGAAAAGTAGAAGAAGTAAAAAGCACCAACACTGTTTAGCATTTAGCT
CCTCTGGACCCCAAAGCCAGACTTACTACATTTGCTTTGATACTTTCACAGAATACTTAAGTGGCTGCG
ACAAGTCTCCAAGTTGCATCCCAGCGCATTAGCTCAGTGGACCTCTCGTGTGTAGCCTGGAACATCTG
CCTGCCAACCTCTTCTACAGCCAAGACCTCACTCATCTCAATTTAAAAACAAAACCTCCTAAGGCAGAACC
CTAGCCTTCCAGCTGCCAGGGGGCTTAATGAACTGCAAAGGTTCAACCAAGTTGAAGAGTCTTAACCTTTC
CAATAATCATTAGGGGACTTCCCTCTGGCAGTCTGCAGTATTCACCAACCTGGCAGAGCTGAACGTGTCC
TGCAATGCCCTGCGATCAGTCCCGCAGCCGTTGGAGTGTGCACAACCTTACAGACATTTTGTGGATG
GAACTTTCTCCAATCCCTTCTGCTGAGTTGGAGAACATGAAGCAGCTTAGTTATCTGGGTCTTTCTTT
CAATGAATTTACTGACATTCCTGAAGTATTGGAGAAATGACTGCTGTGGATAAACTTTGTATGTCTGGA
AACTGTGTGGAGACCCTTAGGCTACAGGCTTTAAGAAAAATGCCTCACATTAACATGTGGATCTAAGGT
TGAACGTAATTAGGAAGCTGATAGCAGATGAAGTGGACTTTCTACAGCATGTTACTCAGCTTGACCTACG
AGACAATAAGCTTGGTGTCTAGATGCTATGATTTTCAACAACATTGAAGTTTTACTGTGAAAGGAAT
CAACTGGTACATTAGACATCTGTGGCTATTTCTAAAAGCGCTCTATGCCTCTTCTAATGAACTGTTC
AACTTGATGTTTACCCAGTTCCAAATTATCTGTCTACATGGATGTTTCAAGGAACCGCTTAGAAAAATGT
GCCTGAGTGGGTATGTGAAAGCCGAAAGCTAGAAGTTTTGGATATTGGCCATAATCAAATATGTGAACTT
CCTGCCCGCTATTTTGAATAGCAGTCTCCGAAAACCTACTGGCAGGACACAACCAAGTTGGCAAGGCTGC
CTGAAAGGCTAGAAAGAACCTCGGTGGAGTCTTGGATGTGCAACACAACCAAGCTCCTTGAGCTCCCACC
TAACCTTCTGATGAAGGCTGACAGCCTGAGATTCTGAACGCCTCTGCGAACAACTGAAAGCCTTCTCT



[View online »](#)

CCAGCCACGCTTTCCGAAGAGACAAACAGTATCTTACAAGAGTTGTATTTGACAAATAACAGCCTCACAG
ACAAATGTGTGCCCTTGTTAACGGGACACCCCCATTTGAAGATCCTTCACATGGCCTATAACCGACTTCA
GAGTTTTCCAGCAAGTAAATGGCGAACTGGAGGAACCTGAAGAAATGATCTCAGTGGGAATAAGCTG
AAAGCCATCCCAACAACGATCATGAATTGCAGGCGCATGCACACCGTGATTGCTCACTCCAACGATCG
AGGTCTTTCCGAAGTTATGCAGCTCCCAGAGATCAAGTGTGTGGACCTGAGCTGTAATGAGCTAAGTGA
AGTCACATTACCAGAAAACCTGCCTCCAACTGCAGGAGCTAGACCTGACTGAAAACCCCGCCTTGTC
CTTGATCACAAAACCTGGAACCTGAATAATATCCGCTGTTTCAAGATTGATCAGCCTTCTACAGGAG
ACGCTTCCGGAGCCCAGCTGTATGGAGTCATGGTTACACTGAAGCTTCGGGGTAAAAACAAGTTGTG
TGTGCGAGCCCTGTCGGTGAATAACTTCTGTGACAACCGGAAGCCCTGTATGGTGTGTTTGACGGAGAC
CGGAATGTGGAGGTGCCCTACCTTCTCCAGTGCATATGAGTGACATTTTGGCTGAAGAGCTGCAAAAA
CAAAAAACGAAGAAGAATACATGGTCAATACATTCATTGTGATGCAAAGGAACTTGAAGTGTGGGCA
GAAGCTTGGTGGTCCGCTGTCTTTGTCATATCAAGCATGACCCCTGTGGATCCAGGAGGATCCTTACC
TTGACCTGTCTAATGTGGCAAGTGCCAAACAGTTCTGTGCGAAATGGAAAGCCGCTGCCTGTGCCA
GATCTTACATCATGAGCTGTGAAGAAGAGCTGAAGAGGATTAACAGCACAAAGGCCATTACTGAGGA
TGGAAGGTGAACGGAGTACTGAGTCCACGCGCATCCTGGGCTACACCTTCTCCATCCCAGTGTGGT
CCTCGCCCCACGTGCAGTCCGTCTCCTGACTCCCAGGATGAGTTCTTCATCCTAGGCAGTAAGGGT
TGTGGGACAGCCTGTCCGTGAGGAGCCGTGGAAGCCGTGCGCAACGTGCCCGATGCCCTGGCTGCTGC
CAAGAAGCTGTGTACCCTGGCCAGAGCTACGGCTGCCACGACAGCATCAGCGCTGTGGTGGTGCAGCTC
AGTGTCACTGAGGACAGCTTCTGCTGCTGCGAGCTCAGCGCCGGTGGGGCTGTGCCACCACCCAGTCTG
GCATCTTCTCCTCCTCAGTGAACATGGTGTCAAGGATCGGCCCTCAGATGGGCTGGGCGTGGCCTCCTC
CAGCAGCGCATGGCTTCCGAGATTAGCAGTGAGCTCTCCACTTCTGAGATGAGCAGCGAGGTGGGGTCA
ACAGCTCCGATGAGCCCCGCGGAGCCCTAAGCGAGAACAGCCCTGCCTACCCAGTGAAGCAGCGCT
GCATGCTCCACCCATCTGTCTGTCCAACCTCTCCAGCGCCAGCTATCCAGCGCCAGTCTCTAGCGC
CTTCTCCGACAACGGCCTTGACAGTGACGATGAGGAGCCATCGAGGGCGTCTTACCAACGGCAGCCGG
GTGGAGGTGGAGGTGGACATCCACTGCAGCCGGGCAAGGAGAAGGAGAAACAGCAGCACCTGCTTCAGG
TGCCAGCAGAGGCCAGTGTGAGGGCATTGTGATCAGCGCAACGAGGATGAGCCAGGTCTGCCAGGAA
GGCAGACTTCTGCGCTTGGGACCATTGGGCGCCGAGGGCCAATGGCTCTGTTGCGCCCCAGGAAAGG
AGCCACAATGTGATAGAGGTGGCTACAGACGCACCTTTCGAAAGCCTGGAGGCTATTTTGTGCCCGG
CTCAGCCGATCCTGATGATCAGTTTATCATACCCCGGAGCTGGAAGAGGAGGTCAAAGAAATCATGAA
GCATACCAGGAGCAACAGCAGCAGCAGCAGCCGCCACCACCCCTCAGCTCCAGCCGAGCTGCCCGG
CACTACCAGCTGGACCAGCTGCCAGATTATTACGACACGCCACTA

ACGCGTACGCGGCCGCTCGAG - GFP Tag - GTTTAA

Protein Sequence: >RG203930 representing NM_194449
Red=Cloning site Green=Tags(s)

```

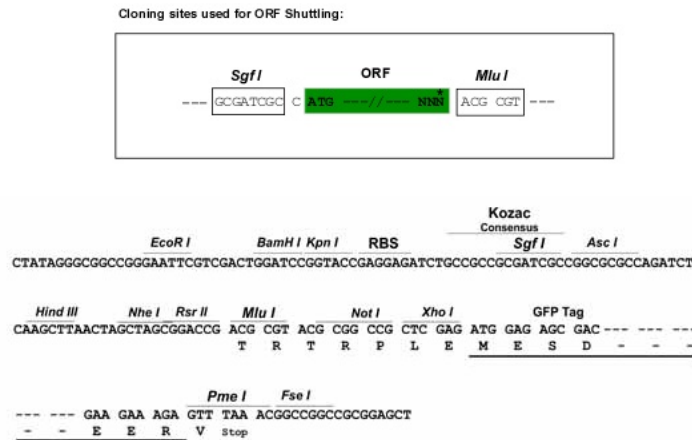
MDSEIGCLIRFYAGKPHSTGSSERIQLSGMYNVRKGMQLPVNRWTRRQVILCGTCLIVSSVKDSLTKGM
HVLPLIGKVEEVKKHQHCLAFSSSGPQSQTYYICFDTFTEYLRWLQVSKVASQRISVDLSCCSLEHL
PANLFYSQDLTHLNLKQNFRLRQNP SLPAARGLNELQRFTKLKSLNLSNNHLGDFPLAVCSIPTLAELNVS
CNALRSVPAAVGVMHNLQTFLLDGNFLQSLPAELENMKQLSYLGLSFNEFTDIPEVLEKLTAVDKLCMSG
NCVETLRLQALRKMPHIKHVDLRLNVIRKLI ADEVDFLQHVTQLDLRDNKLGDL DAMIFNNIEVLHCERN
QLVTLDICGYFLKALYASSNELVQLDVYPVNYLSYMDVSRNRENVPEWVCE SRKLEVLDI GHNQICE L
PARLFCNSSLRKL LAGHNQLARLPERLERTSVEVLDVQHNQLELPPNLLMKADSLRFLNASANKLESLP
PATLSEETNSILQELYL TNNSLTDKCVPLL TGHPLKILHMAYNRLQSF PASKMAKLEEEIDLSGNKL
KAIPPTIMNCRRMHTVIAHSNCIEVFPEVMQLPEIKCVDLSCNELSEVTLPENLPPKLQELDLTGNPRLV
LDHKTLELLNNIRCFKIDQPSTGDASGAPAVWSHGYTEASGVKNKLCVAALSVNNFCDNREALYGVFDG
RNVEVPYLLQCTMSDILAEELQTKNEEYMVNTFIVMQRKLGTAGQKLGAAVLCHIKHDPVDPGGSFT
LTSANVGKQTVLCRNGKPLPLSRYSIMSCEEELKRIKQHKAIITEDGK VNGVTESTRILGYTFLHPSVV
PRPHVQSVLLTPQDEFFILGSKGLWDSLVEEAVEAVRNVDPALAAAKKCTLAQSYGCHDSISAVVVQL
SVTEDSFCCCEL SAGGAVPPPSPGIFPPSVNMV I KDRPSDGLGVPSSSSGMASEISSELSTSEMSSEVGS
TASDEPPPGALSENSPAYPSEQRCMLHPICLSNSFQRQLSSATFSSAFSDNGLDSDDEEPIEGVFTNGSR
VEVEVDIHC SRAKEKEKQQLLQVPAEASDEGIVISANEDEPGLPRKADFSAVGTIGRRRANGSVAPQER
SHNVIEVATDAPLRKPGGYFAAPAQDPDDQFIIPPELEEEVKEIMKHHQEQQQQQPPPPQLQPQLPR
HYQLDQLPDYYDTPL
    
```

TRTRPLE - GFP Tag - V

Restriction Sites:

SgfI-MluI

Cloning Scheme:

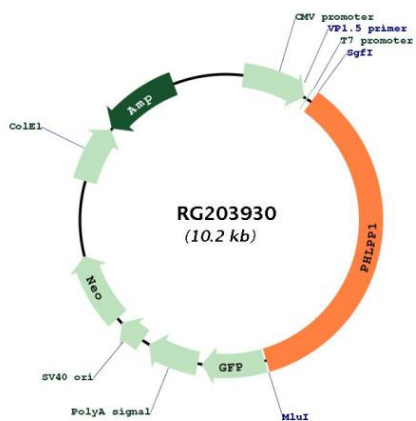


ACCN: NM_194449

ORF Size: 3615 bp

OTI Disclaimer:	The molecular sequence of this clone aligns with the gene accession number as a point of reference only. However, individual transcript sequences of the same gene can differ through naturally occurring variations (e.g. polymorphisms), each with its own valid existence. This clone is substantially in agreement with the reference, but a complete review of all prevailing variants is recommended prior to use. More info
OTI Annotation:	This clone was engineered to express the complete ORF with an expression tag. Expression varies depending on the nature of the gene.
Components:	The ORF clone is ion-exchange column purified and shipped in a 2D barcoded Matrix tube containing 10ug of transfection-ready, dried plasmid DNA (reconstitute with 100 ul of water).
Reconstitution Method:	<ol style="list-style-type: none">1. Centrifuge at 5,000xg for 5min.2. Carefully open the tube and add 100ul of sterile water to dissolve the DNA.3. Close the tube and incubate for 10 minutes at room temperature.4. Briefly vortex the tube and then do a quick spin (less than 5000xg) to concentrate the liquid at the bottom.5. Store the suspended plasmid at -20°C. The DNA is stable for at least one year from date of shipping when stored at -20°C.
RefSeq:	NM_194449.1 , NP_919431.1
RefSeq Size:	4798 bp
RefSeq ORF:	5154 bp
Locus ID:	23239
UniProt ID:	O60346
Cytogenetics:	18q21.33
Gene Summary:	This gene encodes a member of the serine/threonine phosphatase family. The encoded protein promotes apoptosis by dephosphorylating and inactivating the serine/threonine kinase Akt, and functions as a tumor suppressor in multiple types of cancer. Increased expression of this gene may also play a role in obesity and type 2 diabetes by interfering with Akt-mediated insulin signaling. [provided by RefSeq, Dec 2011]

Product images:



Circular map for RG203930