

Product datasheet for **RG203929**

AEBP2 (NM_153207) Human Tagged ORF Clone

Product data:

Product Type:	Expression Plasmids
Product Name:	AEBP2 (NM_153207) Human Tagged ORF Clone
Tag:	TurboGFP
Symbol:	AEBP2
Mammalian Cell Selection:	Neomycin
Vector:	pCMV6-AC-GFP (PS100010)
E. coli Selection:	Ampicillin (100 ug/mL)
ORF Nucleotide Sequence:	>RG203929 representing NM_153207 Red=Cloning site Blue=ORF Green=Tags(s)

TTTTGTAATACGACTCACTATAGGGCGGCCGGAATTCGTCGACTGGATCCGGTACCGAGGAGATCTGCC
GCC**CGATCGCC**

ATGTCGTCGGATGGGGAACCCCTGAGCCGCATGGACTCGGAGGACAGCATAAGCAGTACTATAATGGATG
TAGACAGCACAATTTCCAGTGGGCGTTCACTCCAGCAATGATGAATGGACAAGGAAGCACTACTTCTTC
AAGCAAAAATATTGCCTATAATTGTTGTTGGGACCAGTCCAGGCTTGCCTCACTTAGCCAGATCTG
GCAGATCACATCCGTTCCATACATGTAGATGGTCAGCGAGGAGGGTATTGTTTGCTTATGAAAGGTT
GTAAGGTATATAACACTCCATCTACCAGTCAAAGTTGGTTACAAAGGCATATGCTGACACACAGTGGAGA
CAAACCTTTCAAGTGTGTTGTTGGTGGCTGCAATGCCAGCTTTGCTTCTCAGGGAGGGCTAGCTCGTCAT
GTACCCACACACTTCAGTCAGCAGAACTCCTCAAAGTTTCTAGCCAGCCAAAGGCCAAAGAAGAATCTC
CTTCTAAAGCTGGAATGAACAAAAGGAGGAAATTAAGAACAAGACGACGCTCATTACCACGGCCACA
TGATTTCTTCGATGCACAAACTGGATGCGATAAGACATCGAGCCATATGCTTTAACCTCTCAGCTCAT
ATAGAAAGTTTAGGGAAGGACACAGTGTGTTTTTCATAGTACTGTAATAGCTAAGAGAAAAGAAGATT
CTGGGAAGATCAAACCTTTGCTTATTGGATGCCTGAAGACATTCTGCCTGATGTGTGGGTGAATGAAAG
TGAACGACATCAGTTAAAACTAAAGTAGTTCAATTTATCAAAGCTACCCAAAGATACTGCCTTGCTTTTG
GACCCAAACATATACAGAACAATGCCGAGAAGAGGTTGAAGAGG

ACGCGTACGCGGCCGCTCGAG - GFP Tag - GTTTAA



[View online »](#)

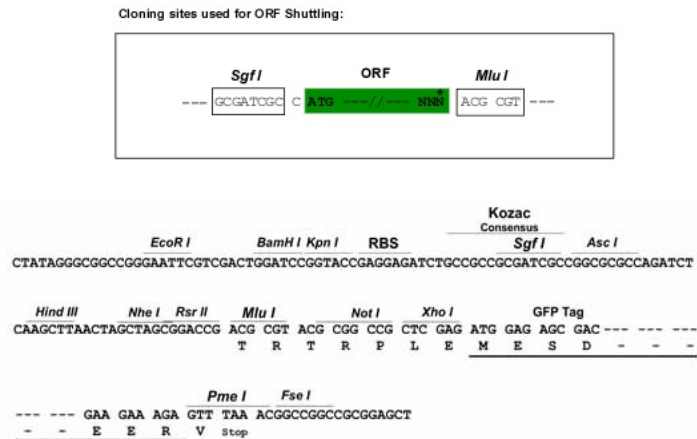
Protein Sequence: >RG203929 representing NM_153207
Red=Cloning site Green=Tags(s)

MSSDGEPLSRMDSSEDSISSTIMDV DSTISSGRSTPAMMNGQGSTTSSSKNIAYNCCWDQCQACFNSSPDL
 ADHIRSIHVDGQ RGGVFVCLWKGCKVYNT PSTSQSWLQRHMLTHSGDKPFKCVVGGCNA SFASQGGLARH
 VPTHF SQQNSSKVSSQPKAKEE SPSKAGMKNRRLKKNRRLRSLPRPHDF FDAQTLDAIRHRAICFNL SAH
 IESLKGH SVVFHSTVIAKRKEDSGKIKLLLHWMPEDILPDVWVNESERHQLKTKV VHL SKLPKDTALLL
 DPNIYRTMPQKRLKR

TRTRPLE - GFP Tag - V

Restriction Sites: SgfI-MluI

Cloning Scheme:



ACCN: NM_153207

ORF Size: 885 bp

OTI Disclaimer: The molecular sequence of this clone aligns with the gene accession number as a point of reference only. However, individual transcript sequences of the same gene can differ through naturally occurring variations (e.g. polymorphisms), each with its own valid existence. This clone is substantially in agreement with the reference, but a complete review of all prevailing variants is recommended prior to use. [More info](#)

OTI Annotation: This clone was engineered to express the complete ORF with an expression tag. Expression varies depending on the nature of the gene.

Components: The ORF clone is ion-exchange column purified and shipped in a 2D barcoded Matrix tube containing 10ug of transfection-ready, dried plasmid DNA (reconstitute with 100 ul of water).

Reconstitution Method:

1. Centrifuge at 5,000xg for 5min.
2. Carefully open the tube and add 100ul of sterile water to dissolve the DNA.
3. Close the tube and incubate for 10 minutes at room temperature.
4. Briefly vortex the tube and then do a quick spin (less than 5000xg) to concentrate the liquid at the bottom.
5. Store the suspended plasmid at -20°C. The DNA is stable for at least one year from date of shipping when stored at -20°C.

RefSeq: [NM_153207.3](#), [NP_694939.1](#)

RefSeq Size: 5660 bp

RefSeq ORF: 1512 bp

Locus ID: 121536

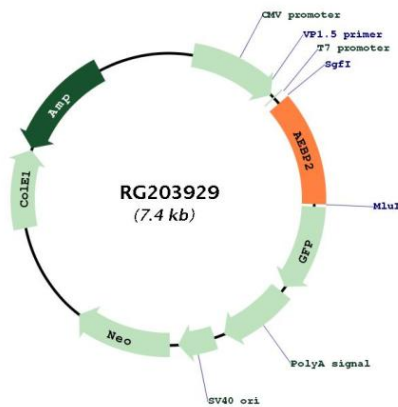
UniProt ID: [Q6ZN18](#)

Cytogenetics: 12p12.3

Domains: zf-C2H2

Gene Summary: DNA-binding transcriptional repressor. May interact with and stimulate the activity of the PRC2 complex, which methylates 'Lys-9' and 'Lys-27' residues of histone H3.[UniProtKB/Swiss-Prot Function]

Product images:



Circular map for RG203929