

Product datasheet for **RG203924**

COUP TF1 (NR2F1) (NM_005654) Human Tagged ORF Clone

Product data:

Product Type:	Expression Plasmids
Product Name:	COUP TF1 (NR2F1) (NM_005654) Human Tagged ORF Clone
Tag:	TurboGFP
Symbol:	COUP TF1
Synonyms:	BBOAS; BBSOAS; COUP-TF1; COUPTF1; EAR-3; EAR3; ERBAL3; SVP44; TCFCOUP1; TFCOUP1
Mammalian Cell Selection:	Neomycin
Vector:	pCMV6-AC-GFP (PS100010)
E. coli Selection:	Ampicillin (100 ug/mL)
ORF Nucleotide Sequence:	>RG203924 representing NM_005654 Red=Cloning site Blue=ORF Green=Tags(s)

TTTTGTAATACGACTCACTATAGGGCGGCCGGAATTCGTCGACTGGATCCGGTACCGAGGAGATCTGCC
GCC**CGATCGCC**

ATGGCAATGGTAGTTAGCAGCTGGCGAGATCCGCAGGACGACGTGGCCGGGGCAACCCCGCGGCCCA
ACCCCGCAGCGCAGGCGGCCCGCGGGCGGGCGCGCGGCGAGCAGCAGCAGCAGCAGGCGGGCTCGG
CGCGCCGCACACGCCGAGACCCCGGGCCAGCCGGAGCGCCCGCCACCCCGGCACGGCGGGGACAAG
GGCCAGGGCCCGCCGGTTCGGGCCAGAGCCAGCAGCACATCGAGTGCCTGGTGTGCGGGGACAAGTCGA
GCGGAAGCACTACGGCCAATTCACCTGCGAGGGCTGCAAAAGTTCTTCAAGAGGAGCGTCCGCAGGAA
CTTAACCTTACACATGCCGTGCCAACAGGAATGTCCCATCGACCAGCACCCGCAACAGTGCCAATAC
TGCCGCCCTCAAGAAGTGCCCTCAAAGTGGCATGAGGCGGGAAGCGGTTACGCGAGGAAGAATGCCTCCAA
CCCAGCCCAATCCAGGCCAGTACGCACTACCAACGGGGACCCCTCAACGGCCACTGCTACCTGTCCGG
CTACATCTCGTGTCTGCGCGCCGAGCCCTACCCACGTGCGCTACGGCAGCCAGTGCATGCAGCCC
ACAACATTATGGGCATCGAGAACATCTGCGAGCTGGCCGCGCGCTGCTTTCAGCGCCGTCGAGTGGG
CCCACAACATCCCCTTCTCCCGGATCTGCAGATCACCGACCAGGTGTCCCTGCTACGCCTCACCTGGAG
CGAGCTGTTCTGTCTCAACGCGGCCAGTGTCTATGCCGCTGCACGTGGCGCCGTTGCTGGCCGCCGCC
GGCCTGCATGCCCTGCCCATGTCTGCCGACCGGTCGTGGCCTTCATGGACCACATCCGCATCTTCCAGG
AGCAGGTGGAGAAGCTCAAGGCGCTACACGTCGACTCAGCCGAGTACAGCTGCCTCAAAGCCATCGTGCT
GTTACGTCAGACGCCTGTGGCCTGTGCGATGCGGCCACATCGAGAGCCTGCAGGAGAAGTCGAGTGC
GCACTGGAGGAGTACGTGAGGAGCCAGTACCCCAACCAGCCAGCCGTTTTGGCAAACCTGCTGCTGCGAC
TGCCCTCGCTGCGCACCGTGTCTCCTCCGTCATCGAGCAGCTCTTCTCGTCCGTTTGGTAGGTA
CCCCATCGAACTCTCATCCGATATGTTACTGTCTGGGAGCAGCTTCAACTGGCCTTACATGTCCATC
CAGTGCTCC

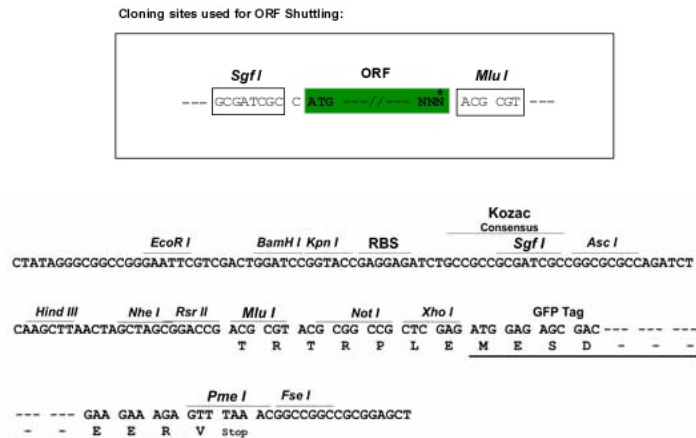
ACGCGTACGCGGCCGCTCGAG - GFP Tag - GTTTAA



[View online »](#)

Restriction Sites: SgfI-MluI

Cloning Scheme:



ACCN: NM_005654

ORF Size: 1269 bp

OTI Disclaimer: The molecular sequence of this clone aligns with the gene accession number as a point of reference only. However, individual transcript sequences of the same gene can differ through naturally occurring variations (e.g. polymorphisms), each with its own valid existence. This clone is substantially in agreement with the reference, but a complete review of all prevailing variants is recommended prior to use. [More info](#)

OTI Annotation: This clone was engineered to express the complete ORF with an expression tag. Expression varies depending on the nature of the gene.

Components: The ORF clone is ion-exchange column purified and shipped in a 2D barcoded Matrix tube containing 10ug of transfection-ready, dried plasmid DNA (reconstitute with 100 ul of water).

Reconstitution Method:

1. Centrifuge at 5,000xg for 5min.
2. Carefully open the tube and add 100ul of sterile water to dissolve the DNA.
3. Close the tube and incubate for 10 minutes at room temperature.
4. Briefly vortex the tube and then do a quick spin (less than 5000xg) to concentrate the liquid at the bottom.
5. Store the suspended plasmid at -20°C. The DNA is stable for at least one year from date of shipping when stored at -20°C.

RefSeq: [NM_005654.6](#)

RefSeq Size: 3210 bp

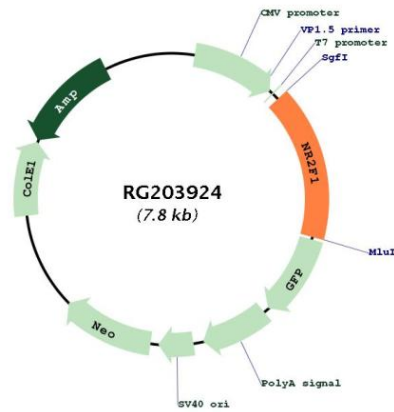
RefSeq ORF: 1272 bp

Locus ID: 7025

UniProt ID: [P10589](#)

Cytogenetics:	5q15
Domains:	HOLI, zf-C4
Protein Families:	Druggable Genome, Nuclear Hormone Receptor, Transcription Factors
Gene Summary:	The protein encoded by this gene is a nuclear hormone receptor and transcriptional regulator. The encoded protein acts as a homodimer and binds to 5'-AGGTCA-3' repeats. Defects in this gene are a cause of Bosch-Boonstra optic atrophy syndrome (BBOAS). [provided by RefSeq, Apr 2014]

Product images:



Circular map for RG203924