

Product datasheet for **RG203871**

SCAMP3 (NM_052837) Human Tagged ORF Clone

Product data:

Product Type:	Expression Plasmids
Product Name:	SCAMP3 (NM_052837) Human Tagged ORF Clone
Tag:	TurboGFP
Symbol:	SCAMP3
Synonyms:	C1orf3
Mammalian Cell Selection:	Neomycin
Vector:	pCMV6-AC-GFP (PS100010)
E. coli Selection:	Ampicillin (100 ug/mL)
ORF Nucleotide Sequence:	>RG203871 representing NM_052837 Red=Cloning site Blue=ORF Green=Tags(s)

TTTTGTAATACGACTCACTATAGGGCGGCCGGAATTCGTCGACTGGATCCGGTACCGAGGAGATCTGCC
GCC**CGATCGCC**

ATGGCTCAGAGCAGAGACGGCGGAAACCCGTTCCGCCGAGCCAGCGAGCTTGACAACCCCTTTCAGCCAC
CACCAGCCTATGAGCCTCAGCCCTGCCCATTCGCTCCACCCTCAGCTCCCTCCTGCAGCCCTCGAG
AAAGCTCAGCCCCACAGAACCTAAGAACTATGGCTCATAAGCACTCAGGCTCAGCTGCAGCAGCCACA
GCTGAGCTGCTGAAGAACAGGAGGAGCTCAACCGGAAGGCAGAGGAGTTGGACCGAAGGGAGCGAGAGC
TGCAGCATGCTGCCCTGGGGGACAGCTACTCGACAGAAACAATTGGCCCTCTACCTTCTTTTGTCC
AGTTCAGCCCTGCTTTTCCAGGACATCTCCATGGAGATCCCCAAGAATTTAGAAAGACTGTATCCACC
ATGTAACCTCTGGATGTGAGCAGCTGGCTCTTCTCCTGAATTCCTCGCCTGCCTGCCAGCTTCT
GTGTGGAACCAACAATGGCGCAGGCTTTGGGCTTTCTATCCTCTGGGTCTCTTTTCACTCCCTGCTC
CTTTGTCTGCTGGTACCGCCCCATGTATAAGGCTTTCCGGAGTGACAGTTCATTCAATTTCTTGGTTTT
TTCTTCATTTTCTTGTCCAGGATGTGCTCTTTGTCTCCAGGCCATTGGTATCCAGGTTGGGGATTCA
GTGGCTGGATCTCTGCTCTGGTGGTGCCGAAGGCAACACAGCAGTATCCGTGCTCATGCTGCTGGTCCG
CCTGCTTCACTGGCATTGCTGTGCTAGGAATTGTCATGCTGAAACGGATCCACTCCTTATACCGCCGC
ACAGGTGCCAGCTTTAGAAAGGCCAGCAAGAATTTGCTGCTGGTGTCTTCTCCAACCCGCGGTGCCAA
CCGCAGCTGCCAATGCAGCCGCTGGGGCTGCTGAAAATGCCTTCCGGGCCCGC

ACGCGTACGCGGCCGCTCGAG - GFP Tag - GTTTAA



[View online »](#)

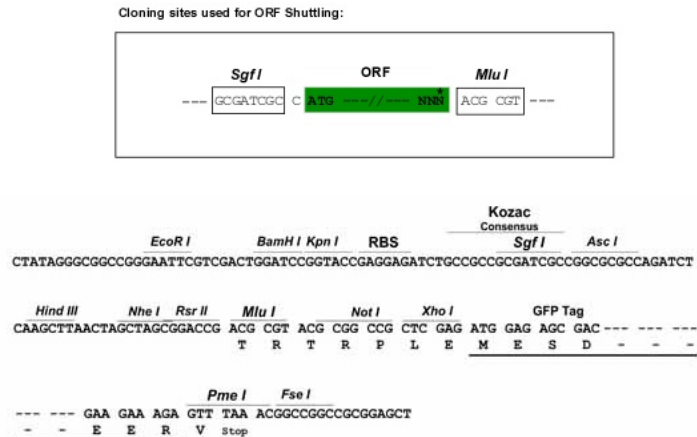
Protein Sequence: >RG203871 representing NM_052837
 Red=Cloning site Green=Tags(s)

MAQSRDGGNPFAEPSELNPFQPPPAYEPPAPAPLPPPSAPSLQPSRKLSPTEPKNYGSYSTQASAAAAT
 AELLKKQEELNRKAEELDRRERELQHAALGGTATRQNNWPPLPSFCPVQPCFFQDISMEIPQEFQKTVST
 MYLLWMCSTLALLLNFLACLASFVETNNGAGFGLSILVWLLFTPCSFVCWYRPMYKAFRSDSSFNFFVF
 FFIFVQDVLVFLQAIGIPGWGFSGWISALVVPKGNTAVSVLMLLVALLFTGIAVLGIVMLKRIHSLYRR
 TGASFQKAQQEFAAGVFSNPAVRTAAANAAAGAENAFAFRAP

TRTRPLE - GFP Tag - V

Restriction Sites: SgfI-MluI

Cloning Scheme:



ACCN: NM_052837

ORF Size: 963 bp

OTI Disclaimer: The molecular sequence of this clone aligns with the gene accession number as a point of reference only. However, individual transcript sequences of the same gene can differ through naturally occurring variations (e.g. polymorphisms), each with its own valid existence. This clone is substantially in agreement with the reference, but a complete review of all prevailing variants is recommended prior to use. [More info](#)

OTI Annotation: This clone was engineered to express the complete ORF with an expression tag. Expression varies depending on the nature of the gene.

Components: The ORF clone is ion-exchange column purified and shipped in a 2D barcoded Matrix tube containing 10ug of transfection-ready, dried plasmid DNA (reconstitute with 100 ul of water).

Reconstitution Method:

1. Centrifuge at 5,000xg for 5min.
2. Carefully open the tube and add 100ul of sterile water to dissolve the DNA.
3. Close the tube and incubate for 10 minutes at room temperature.
4. Briefly vortex the tube and then do a quick spin (less than 5000xg) to concentrate the liquid at the bottom.
5. Store the suspended plasmid at -20°C. The DNA is stable for at least one year from date of shipping when stored at -20°C.

RefSeq: [NM_052837.3](#)

RefSeq Size: 1525 bp

RefSeq ORF: 966 bp

Locus ID: 10067

UniProt ID: [O14828](#)

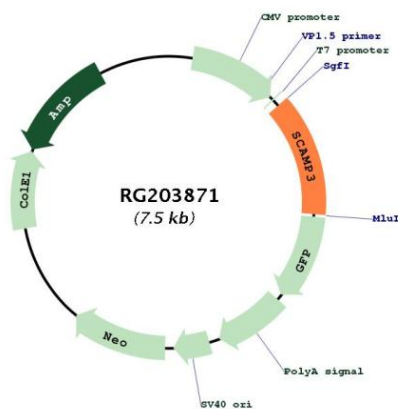
Cytogenetics: 1q22

Domains: SCAMP

Protein Families: Transmembrane

Gene Summary: This gene encodes an integral membrane protein that belongs to the secretory carrier membrane protein family. The encoded protein functions as a carrier to the cell surface in post-golgi recycling pathways. This protein is also involved in protein trafficking in endosomal pathways. Two transcript variants encoding different isoforms have been found for this gene. [provided by RefSeq, May 2011]

Product images:



Circular map for RG203871