

Product datasheet for **RG203868**

ARL11 (NM_138450) Human Tagged ORF Clone

Product data:

Product Type: Expression Plasmids
Product Name: ARL11 (NM_138450) Human Tagged ORF Clone
Tag: TurboGFP
Symbol: ARL11
Synonyms: ARLTS1
Mammalian Cell Selection: Neomycin
Vector: pCMV6-AC-GFP (PS100010)
E. coli Selection: Ampicillin (100 ug/mL)
ORF Nucleotide Sequence: >RG203868 representing NM_138450
 Red=Cloning site Blue=ORF Green=Tags(s)

TTTTGTAATACGACTCACTATAGGGCGCCGGGAATTCGTCGACTGGATCCGGTACCGAGGAGATCTGCC
 GCC**CGATCGCC**

ATGGGTTCTGTGAATTCAGAGGTCACAAGGCGGAAGCCAGGTGGTGATGATGGCCTGGACTCGGCGG
 GCAAGACCACGCTCCTTTACAAGCTGAAGGGCCACCAGCTGGTGGAGACCCTGCCACTGTTGGTTTCAA
 CGTGGAGCCTCTGAAAGCTCCTGGGCACGTGCTACTGACTCTCTGGGACGTTGGGGGACAGGCCCGCTC
 AGAGCCAGCTGGAAGGACTATCTGGAAGGCACAGATATCCTCGTGTACGTGCTGGACAGCACAGATGAAG
 CCCGCTTACCCGAGTCGGCGGCTGAGCTCACAGAAGTCTGAACGACCCCAACATGGCTGGCGTCCCTT
 CTTGGTGTGGCCACAAGCAGGAGGCACCTGATGCACCTCCGCTGCTTAAGATCAGAAACAGGCTGAGT
 CTAGAGAGATTCCAGGACCACTGCTGGGAGCTCCGGGGCTGCAGTGCCCTCACTGGGAGGGGCTGCCCC
 AGGCCCTGCAGAGCCTGTGGAGCCTCTGAAATCTCGCAGCTGCATGTGTCTGCAGGCGAGAGCCCATGG
 GGCTGAGCGCGGAGACAGCAAGAGATCT

ACGCGTACGCGGCCGCTCGAG - GFP Tag - GTTTAA

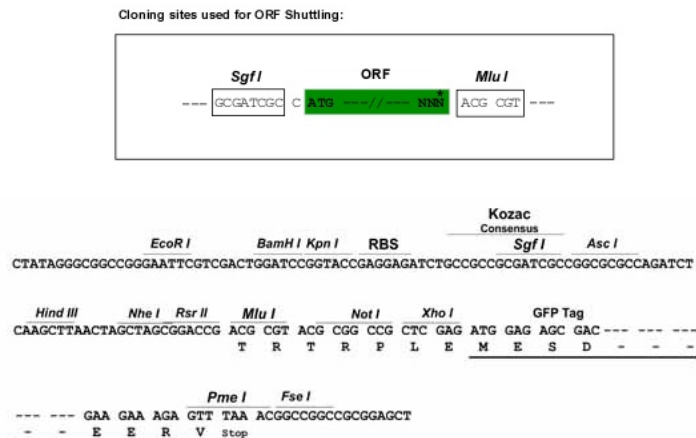
Protein Sequence: >RG203868 representing NM_138450
 Red=Cloning site Green=Tags(s)

MGSVNSRGHKAEAQVMMGLDSAGKTTLLYKLGKQLVETLPTVGFNVEPLKAPGHVSLTLWDVGGQAPL
 RASWKDYLEGTDILVYVLDSTDEARLPESAAELTEVLNDPNMAGVPFLVLANKQEAPDALPLLKIRNRLS
 LERFQDHCWELRGCSALTGEGLPEALQSLWLLKSRSCMCLQARAHGAERGDSKRS

TRTRPLE - GFP Tag - V

Restriction Sites: Sgfl-MluI



Cloning Scheme:


ACCN: NM_138450

ORF Size: 588 bp

OTI Disclaimer: The molecular sequence of this clone aligns with the gene accession number as a point of reference only. However, individual transcript sequences of the same gene can differ through naturally occurring variations (e.g. polymorphisms), each with its own valid existence. This clone is substantially in agreement with the reference, but a complete review of all prevailing variants is recommended prior to use. [More info](#)

OTI Annotation: This clone was engineered to express the complete ORF with an expression tag. Expression varies depending on the nature of the gene.

Components: The ORF clone is ion-exchange column purified and shipped in a 2D barcoded Matrix tube containing 10ug of transfection-ready, dried plasmid DNA (reconstitute with 100 ul of water).

Reconstitution Method:

1. Centrifuge at 5,000xg for 5min.
2. Carefully open the tube and add 100ul of sterile water to dissolve the DNA.
3. Close the tube and incubate for 10 minutes at room temperature.
4. Briefly vortex the tube and then do a quick spin (less than 5000xg) to concentrate the liquid at the bottom.
5. Store the suspended plasmid at -20°C. The DNA is stable for at least one year from date of shipping when stored at -20°C.

RefSeq: [NM_138450.6](#)

RefSeq Size: 3294 bp

RefSeq ORF: 591 bp

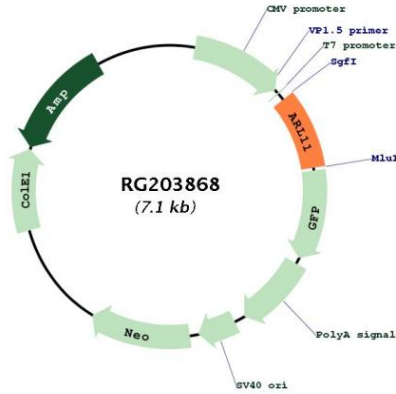
Locus ID: 115761

UniProt ID: [Q969Q4](#)

Cytogenetics: 13q14.2

Gene Summary:

This gene encodes a tumor suppressor related to the ADP-ribosylation factor (ARF) family of proteins. The encoded protein may play a role in apoptosis in a caspase-dependent manner. Polymorphisms in this gene have been associated with some familial cancers. [provided by RefSeq, May 2010]

Product images:


Circular map for RG203868