

## Product datasheet for **RG203854**

### **NORE1 (RASSF5) (NM\_182665) Human Tagged ORF Clone**

#### Product data:

Product Type:	Expression Plasmids
Product Name:	NORE1 (RASSF5) (NM_182665) Human Tagged ORF Clone
Tag:	TurboGFP
Symbol:	NORE1
Synonyms:	Maxp1; NORE1; NORE1A; NORE1B; RAPL; RASSF3
Mammalian Cell Selection:	Neomycin
Vector:	pCMV6-AC-GFP (PS100010)
E. coli Selection:	Ampicillin (100 ug/mL)
ORF Nucleotide Sequence:	>RG203854 representing NM_182665 Red=Cloning site Blue=ORF Green=Tags(s)

TTTTGTAATACGACTCACTATAGGGCGGCCGGAATTCGTCGACTGGATCCGGTACCGAGGAGATCTGCC  
GCC**CGATCGC**C

ATGACCGTGGACAGCAGCATGAGCAGTGGGACTGCAGCCTGGACGAGGAAGTGAAGACTGCTTCTTCA  
CTGCTAAGACTACCTTTTTTCAGAAATGCGCAGAGCAAACATCTTTCAAAGAATGTCTGTAACCTGTGGA  
GGAGACACAGCGCCCGCCACACTGCAGGAGATCAAGCAGAAGATCGACAGCTACAACACGCGAGAGAAG  
AACTGCCTGGGCATGAACTGAGTGAAGACGGCACCTACACGGGTTTCATCAAAGTGCATCTGAAACTCC  
GGCGGCCTGTGACGGTGCCTGCTGGGATCCGGCCAGTCCATCTATGATGCCATCAAGGAGGTGAACCT  
GGCGGCTACCACGACAAGCGGACATCCTTCTACCTGCCCTAGATGCCATCAAGCAGCTGCACATCAGC  
AGCACCACCACCGTCAGTGAGGTCAAGGGGCTGCTCAAGAAGTTCATGGTTGTGGACAATCCCCAGA  
AGTTTGCACCTTTTAAAGCGGATACACAAGGACGGACAAGTGTCTTCCAGAACTCTCCATTGCTGACCG  
CCCCCTACCTGCGCCTGCTTGTGGCCTGACACGGAGGTCTCAGCTTTGTGCTAAAGGAGAATGAA  
ACTGGAGAGGTAGAGTGGGATGCCTTCTCCATCCCTGAACCTCAGAACTTCTAAACAATCCTGAAAAAG  
AGGAGCAGGACAAAATCCAACAAGTCAAAAAGAAGTATGACAAGTTTAGGCAGAACTGGAGGAGGCCTT  
AAGAGAATCCCAGGGCAAACCTGGG

**ACGCGT**ACGCGGCCGCTCGAG - GFP Tag - GTTTAA



[View online »](#)

**Protein Sequence:** >RG203854 representing NM\_182665  
 Red=Cloning site Green=Tags(s)

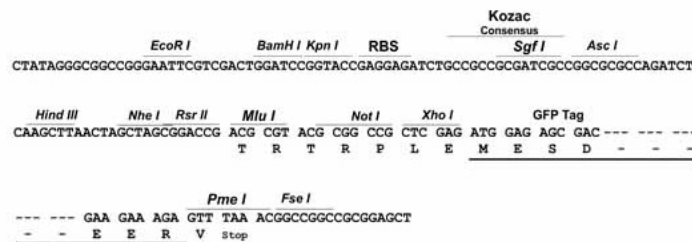
MTVDSSMSSGYCSLDEELEDCCFFAKTTFFRNAQSKHLSKNVCKPVEETQRPPTLQEIKQKIDSYNTREK  
 NCLGMKLSHDGTYTGFIVHLKLRPVTVPAGIRPQSIYDAIKEVNLAATTDKRTSFYLPDAIKQLHIS  
 STTTVSEVIQGLLKKFMVVDNPQKFAFKRIHKDGOVLFQKLSIADRPLYRLLAGPDTTEVLSFVLKENE  
 TGEVEWDAFSIPELQNFLLILEKEEQDKIQVQKKYDKFRQKLEALRESQGKPG

TRTRPLE - GFP Tag - V

**Restriction Sites:** SgfI-MluI

**Cloning Scheme:**

Cloning sites used for ORF Shutting:



**ACCN:** NM\_182665

**ORF Size:** 795 bp

**OTI Disclaimer:** The molecular sequence of this clone aligns with the gene accession number as a point of reference only. However, individual transcript sequences of the same gene can differ through naturally occurring variations (e.g. polymorphisms), each with its own valid existence. This clone is substantially in agreement with the reference, but a complete review of all prevailing variants is recommended prior to use. [More info](#)

**OTI Annotation:** This clone was engineered to express the complete ORF with an expression tag. Expression varies depending on the nature of the gene.

**Components:** The ORF clone is ion-exchange column purified and shipped in a 2D barcoded Matrix tube containing 10ug of transfection-ready, dried plasmid DNA (reconstitute with 100 ul of water).

**Reconstitution Method:**

1. Centrifuge at 5,000xg for 5min.
2. Carefully open the tube and add 100ul of sterile water to dissolve the DNA.
3. Close the tube and incubate for 10 minutes at room temperature.
4. Briefly vortex the tube and then do a quick spin (less than 5000xg) to concentrate the liquid at the bottom.
5. Store the suspended plasmid at -20°C. The DNA is stable for at least one year from date of shipping when stored at -20°C.

**RefSeq:** [NM\\_182665.4](#)

**RefSeq Size:** 3531 bp

**RefSeq ORF:** 798 bp

**Locus ID:** 83593

**UniProt ID:** [Q8WWW0](#)

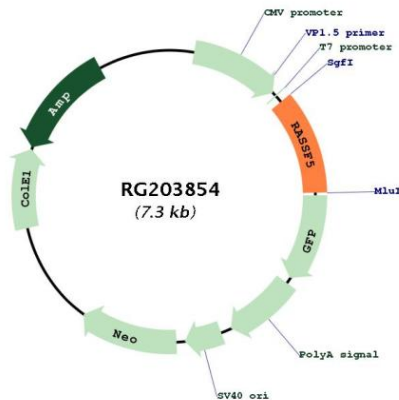
**Cytogenetics:** 1q32.1

**Protein Families:** Druggable Genome

**Protein Pathways:** Leukocyte transendothelial migration, Non-small cell lung cancer, Pathways in cancer

**Gene Summary:** This gene is a member of the Ras association domain family. It functions as a tumor suppressor, and is inactivated in a variety of cancers. The encoded protein localizes to centrosomes and microtubules, and associates with the GTP-activated forms of Ras, Rap1, and several other Ras-like small GTPases. The protein regulates lymphocyte adhesion and suppresses cell growth in response to activated Rap1 or Ras. Multiple transcript variants encoding different isoforms have been found for this gene. [provided by RefSeq, Jul 2008]

### Product images:



Circular map for RG203854