

## Product datasheet for **RG203827**

### **ACCN4 (ASIC4) (NM\_182847) Human Tagged ORF Clone**

#### **Product data:**

Product Type:	Expression Plasmids
Product Name:	ACCN4 (ASIC4) (NM_182847) Human Tagged ORF Clone
Tag:	TurboGFP
Symbol:	ACCN4
Synonyms:	ACCN4; BNAC4
Mammalian Cell Selection:	Neomycin
Vector:	pCMV6-AC-GFP (PS100010)
E. coli Selection:	Ampicillin (100 ug/mL)



[View online »](#)

**ORF Nucleotide Sequence:**

>RG203827 representing NM\_182847  
 Red=Cloning site Blue=ORF Green=Tags(s)

TTTTGTAATACGACTCACTATAGGGCGGCCGGGAATTCGTCGACTGGATCCGGTACCGAGGAGATCTGCC  
 GCC**CGGATCGCC**

ATGCTGAGCGGAGCGGCTGGGGCTGCGCGGCGTGGCGGAGCAGCGCTCGTCCCTCGCTCACTCGCTCGC  
 TCGCAGGGACACACGCAGGGGCTGACAGCTGTGCTGGTGTGATAAGGGAAGCCACAAGGAGACGATCGA  
 GGAGAGAGACAAGCGGCAGCAGAGGCAGCAGCGCAGAGGCAGCACCAGGGCTGCGGAGCTGCTGGGAGT  
 GGGAGTACTCCCCACCTCGGGCCCCACCCTGTCCCTGTCCTTCCCGCTTGCCCTGAGTTTAGAAG  
 AGCAGCCGCTGCCACCACTGCCACTCGGGAGGGCACCAGGGTGTGGCTAGGGAGGACAGGGCAGGGA  
 GGCTCTGGCCAGTCCCAGCAGCCGGGACAGATGCCGATCGAGATTGTGTGCAAAATCAAATTTGCTGAG  
 GAGGATGCGAAACCAAGGAGAAGGAGGCAGGGATGAGCAGAGCCTCCTCGGGGCTGTTGCCCTGGAG  
 CAGCCCCCGAGACCTGGCCACCTTGGCAGCACCAGCACCTGCATGGACTGGGCCGGGCTGTGGCCC  
 AGGCCCCACGGACTGCGCAGAACCCTGTGGGCACTGGCCCTACTCACCTCGCTGGCTGCCTTCTGTAC  
 CAGGCGGCTGGCCTGGCCCGGGGCTACCTGACCCGGCCTCACCTGGTGGCAATGGACCCCGCTGCCCCAG  
 CCCCAGTGGCGGGCTTCCCGGCTGTACCCTCTGCAATATCAACCCTTCCGGCATTCCGGCACTAGCGA  
 TGCCGACATCTTCCACCTGGCCAATCTGACAGGGCTGCCCCCAAGACCGGGATGGGCACCGTGGCGGT  
 GGCTGCGCTACCCAGAGCCTGACATGGTAGACATCTCAACCGCACTGGCCACCAGCTCGCCGACATGC  
 TTAAGAGCTGCAACTTCACTGGGCATCACTGCTCCGCCAGCAACTTCTGTGGTCTATACTCGCTATGG  
 GAAGTGTACACCTTCAACGCGGACCCCGGAGCTCGTGGCCAGCCGGGAGGGGATGGGCAGTGGC  
 CTGGAGATCATGCTGGACATCCAGCAGGAGGAGTACCTGCCATCTGGAGGGAGACAAATGAGACGTCGT  
 TTGAGGCAGGTATTCGGGTGCAGATCCACAGCCAGGAGGAGCCGCTACATCCACCAGCTGGGGTTCGG  
 GGTGTCCCGAGGCTTCCAGACCTTGTGTCTGCCAGGAACAGCGGCTGACCTACCTGCCCGAGCCCTGG  
 GGCAACTGCCCGCAGAGAGTGAAGTCAAGGAGCCTGAGCTTCAAGGCTACTCGGCTACAGTGTGTCTG  
 CCTGCCGGCTGCGCTGTGAAAAGGAGGCGTGTTCAGCGCTGCCACTGCCGGATGGTGCACATGCCAGA  
 CTCCCTGGGTGGGGGCCCTGAGGGCCCGTCTTCTGCCCCACCCCTGCAACCTGACACGCTATGGGAAA  
 GAGATCTCCATGGTCAAGATCCCAACAGGGGCTCAGCCCGGTACCTGGCAGGAAGTACAACCGCAACG  
 AGACCTACATACGGGAGAACTTCTGGTCTAGATGTCTTCTTTGAGGCCCTGACCTCTGAAGCCATGGA  
 GCAGCGAGCAGCCTATGGCTGTGACCCCTGCTGGGAGACCTCGGGGACAGATGGGCTGTTTATTGGG  
 GCCAGCATCTCACGTTGCTGGAGATCCTCGACTACATCTATGAGGTGCTCTGGGATCGACTGAAGCGGG  
 TATGGAGCGTCCAAGACCCCTGCGGACCTCCACTGGGGGATCTCCACTTTGGGGTTCAGGAGCT  
 GAAGGAACAGAGTCCCTGCCCGAGCCTGGGCCGAGCGGAGGGTGGGGGGTCAAGCAGTCTGCTCCCAAT  
 CACCACCACCCACGGTCCCCAGGAGGTCTCTTTGAAGATTTGCTTGC

**ACGCGT**ACGCGGGCCGCTCGAG – GFP Tag – GTTTAA

**Protein Sequence:**

>RG203827 representing NM\_182847  
 Red=Cloning site Green=Tags(s)

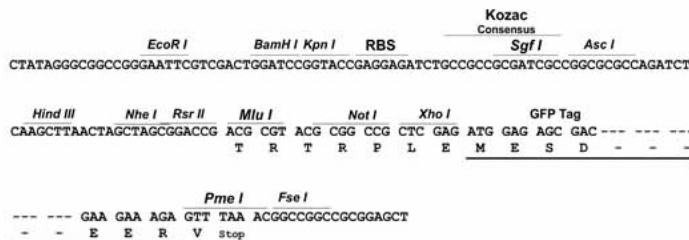
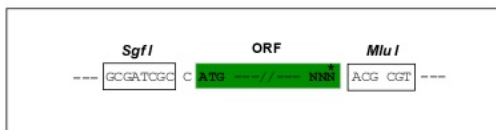
MLSGAAGAARRGGAALAPSLTRSLAGTHAGADSCAGADKGSKHETIEERDKRQQRQQRQHQGCGAAGS  
 GSDSPTSGPHVPVLFPLALSLEEQLPPLPLGRAPGLLAREGQGREALASPSSRGQMPIEIVCKIKFAE  
 EDAKPKEKEAGDEQSLLGAVAPGAAPRDLATFASTSTLHGLGRACGPGPHLRRTLWALALLTSLAAFLY  
 QAAGLARGYLTRPHLVAMPDPAAPVAVGFPAVTLNINRFRHSALSDADIFHLANLTGLPPKDRDGHRAA  
 GLRYPEPDMVDILNRTGHQLADMLKSCNFSGHHCASNFVSVYTRYGKCYTFNADPRSSLP SRAGGMGSG  
 LEIMLDIQQEYLPWIWRETNETSFEAGIRVQIHSQEEPPYIHLGFGVSPGFQTFVSCQEQLTYLPQPW  
 GNCRAESELREPELQGYSAVSACRLRCEKEAVLQRCHCRMVHMPDSLGGGPEGPCFPTPCNLTRYGK  
 EISMVRIPNRGSARYLARKYNRNETYIRENFLVLDVFFFEALTSEAMEQRAAYGLSALLGDLGGQMGFLFIG  
 ASILTLLEILDYIYEVSWDRLEKRVWRPKTPLRTSTGGISTLGLQELKEQSPCPSLGRAEGGGVSSLLPN  
 HHHPHGPPGGLFEDFAC

**TRTRPLE** – GFP Tag – V

Restriction Sites: SgfI-MluI

Cloning Scheme:

Cloning sites used for ORF Shutting:



ACCN: NM\_182847

ORF Size: 1941 bp

OTI Disclaimer: The molecular sequence of this clone aligns with the gene accession number as a point of reference only. However, individual transcript sequences of the same gene can differ through naturally occurring variations (e.g. polymorphisms), each with its own valid existence. This clone is substantially in agreement with the reference, but a complete review of all prevailing variants is recommended prior to use. [More info](#)

OTI Annotation: This clone was engineered to express the complete ORF with an expression tag. Expression varies depending on the nature of the gene.

Components: The ORF clone is ion-exchange column purified and shipped in a 2D barcoded Matrix tube containing 10ug of transfection-ready, dried plasmid DNA (reconstitute with 100 ul of water).

Reconstitution Method:

1. Centrifuge at 5,000xg for 5min.
2. Carefully open the tube and add 100ul of sterile water to dissolve the DNA.
3. Close the tube and incubate for 10 minutes at room temperature.
4. Briefly vortex the tube and then do a quick spin (less than 5000xg) to concentrate the liquid at the bottom.
5. Store the suspended plasmid at -20°C. The DNA is stable for at least one year from date of shipping when stored at -20°C.

RefSeq: [NM\\_182847.1](#), [NP\\_878267.1](#)

RefSeq Size: 2697 bp

RefSeq ORF: 1563 bp

Locus ID: 55515

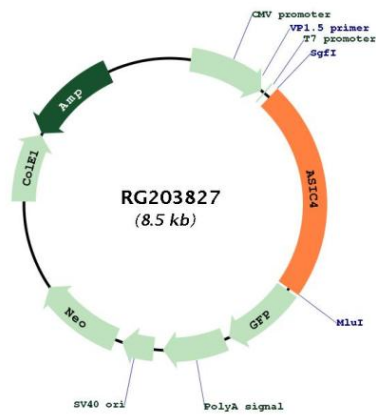
UniProt ID: [Q96FT7](#)

**Cytogenetics:** 2q35

**Protein Families:** Druggable Genome, Ion Channels: Other

**Gene Summary:** This gene belongs to the superfamily of acid-sensing ion channels, which are proton-gated, amiloride-sensitive sodium channels. These channels have been implicated in synaptic transmission, pain perception as well as mechanoperception. This gene is predominantly expressed in the pituitary gland, and was considered a candidate for paroxysmal dystonic choreoathetosis (PDC), a movement disorder, however, no correlation was found between mutations in this gene and PDC. [provided by RefSeq, Feb 2012]

**Product images:**



Circular map for RG203827