

Product datasheet for **RG203825**

GAS2L1 (NM_006478) Human Tagged ORF Clone

Product data:

Product Type:	Expression Plasmids
Product Name:	GAS2L1 (NM_006478) Human Tagged ORF Clone
Tag:	TurboGFP
Symbol:	GAS2L1
Synonyms:	GAR22
Mammalian Cell Selection:	Neomycin
Vector:	pCMV6-AC-GFP (PS100010)
E. coli Selection:	Ampicillin (100 ug/mL)



[View online »](#)

ORF Nucleotide
Sequence:

>RG203825 representing NM_006478
Red=Cloning site Blue=ORF Green=Tags(s)

TTTTGTAATACGACTCACTATAGGGCGGCCGGAATTCGTCGACTGGATCCGGTACCGAGGAGATCTGCC
GCCGCGATCGCC

ATGGCAGACCCAGTGGCGGGCATCGCGGGTTCGCGCGCCAAGAGCGTGCGGCCATTTTCGCTCCAGTGAGG
CCTACGTGGAGGCCATGAAGGAGGACCTGGCCGAGTGGCTCAATGCCTTGTACGGCCTGGGTCTCCCGGG
TGGTGGCGATGGCTTCTGACAGGGCTGGCCACGGGCACGACCCTGTGCCAACATGCCAACGCCGTGACC
GAGGCTGCCCGTGCATTGGCAGCCGCCCGCCGCGCCGAGGTGTGGCCTTCCAGGCGCACAGTGTAGTGC
CTGGCTCCTTCATGGCGCGGACAACGTGGCCACCTTCATCGGCTGGTGGCGGTGGAGCTGGGTGTGCC
GGAGGTGCTCATGTTGAGACTGAGGACCTGGTGTGCGCAAGAACGAGAAGAGCGTGGTGTGTGCCTG
CTGGAGGTGGCGGGCGTGGGGCAGCCTGGGCCTGTGGCCCCACGCCTCGTGCAGTTTGAGCAGGAGA
TTGAGCGGGAGCTGCGTGTGCACCCCCAGCCCCAACGCCCTGCCGCTGGGGAGGACACCACTGAAAC
CGCCCCGCACACAGGGACTCCTGCCCGCGCCCCCGCATGACACCCAGCGACCTGCGCAACCTCGACGAG
CTGGTGAGGGAGATTCTGGGCCGCTGCACCTGCCCTGACCAAGTTCCCATGATCAAGGTCTCAGAGGGGA
AGTACCGTGTGGGGGACTCGAGCCTGCTCATCTTTGTGCGGGTGTGAGGAGCCACGTGATGGTGGCAGT
GGTGGTGGCTGGGACACGCTGGAGCATTACCTGGACAAGCACGACCCGTGCCGCTGCTCCTCCACTGCT
CATCGCCACCCAGCCGAGGGTCTGCACCTTTTCTCCACAGAGGGTGTGCGCCACCACCACTCCCGGCC
CTGCTAGCCAGTCCCTGGGAGTGAGCGCCGGGGCTCCCGGCCTGAGATGACTCCCGTTAGCTTACGAAG
CACAAAGGAGGGGCCCCGAGACCCACCCAGGCCCGGGATCAGCTGCCCCCATCCCGCTCCCGCCG
TACTCCGGGACAGTACTCCTCAGCCTCCTCCGCCAGAGCGGCCCTTGGTACCCGAGTGATGACA
CAGGCACTGGCCCCGGAGGGAGCGACCCAGCCGGCGGTGACCACAGGCACCCCGCCTCCGAGACG
GCCTCCTGCCCTGCGCAGCCAGTCCCGAGACCGGCTGGATCGCGGCCGGCCCCGGGGGGCCCCAGGAGGC
AGGGGAGCCAGCTGTGGTCCCGAGCCCTGCCCGCGGGCCCGGAGCCAGAGCCGCGAGGAGCAGGCTG
TGCTGCTGTGCGCAGGGATCGAGACGGGCAGCACTCATGGGTGCCAAGGGGAGGGGAGTGGGGGCTC
GGCAGGAGCACCCCCAGACTCCCGTGGCCGAGCCCTGCAGCACCCCGGCTTCCCGGGTCTCCAGC
CCCAGTCCAGAGTTGGGCACCACACCGGCAGCATCTCCGCACACCCCTGCAGCTCGACCCGAGCAGG
AGCAGCAGCTGTCCGGCGCCTGGAAGAGGAGTTCCTGGCCAATGCCCGGCCCTTGAGGCTGTTGCTAG
CGTGACCCCACTGGACCAGCCCTGACCCAGCTCGGGCCCCGACCCTCCAGCTCCTGACTCTGCCTAT
TGTTCTCCAGTTCCTCCTTCTCGTCCCTCAGCGTCTGGGTGGCAAATGTGGCCAACCTGGGGACTCTG
GCCGGACGGCCAATGGGCTGCCTGGGCCCGAAGCCAAGCCCTTCCAGCTCCTCCGATGAAGGCAGCCC
CTGCCCTGGCATGGGGGGCCACTAGATGCACCTGGGAGCCCCCTGGCTTGCAGTGAACCCCTCGAGGACC
TGGGCACGGGGTGGATGGACACACAGCCAGACCGTAAACCCCTACGATATCCCCACGCCTCGGGGCCCC
GCCGCCCTCCGGACCCGAGAGCTGGGACATGGCATGCCCTGCACTCAGTACCCCGAGGGCTGAGCC
AGATTCCTGGATG

ACGCGTACGCGGGCCGCTCGAG - GFP Tag - GTTTAA

Protein Sequence: >RG203825 representing NM_006478
 Red=Cloning site Green=Tags(s)

MADPVAGIAGSAAKSVRPFSSSEAYVEAMKEDLAEWLNALYGLPLGGGDGFLTGLATGTTLCQHNAV
 EAARALAAARPARGVAFQAHSSVVPGSFMARDNVATFIGWCRVELGVPEVLMFETEDLVLRKNEKSVLCL
 LEVARRGARLGLLAPRLVQFEQEIERELRAAPPAPNAPAAGEDTTETAPAGTPARGPRMTPSDLRNLDE
 LVREILGRCTCPDQFPMIKVSEKGYRVGDSLLIFVRVLRSHVMVRVGGGWDTLLEHYLDKHDPCCSSTA
 HRPPQPRVCTFSPQRVSPPTSPRPASVPGSERGSRPEMTPVSLRSTKEGPETPPRPRDQLPPHPRSRR
 YSGDSDSSASSAQSGPLGTRSDDTGTGPRRERPSRRLTTGTPASPRRPPALRSQSRDRLDRGRPRGAPGG
 RGAQLSVPSPARRARSQSREEQAVLLVRRDRDQHSWVPRGRGSGGSRSTPQTTPRARSAPAPRLSRVSS
 PPELGTTPASIFRTPQLDPPQEQQLFRRLEEEFLANARALEAVASVTPTGPAPDAPADPPADPSAY
 CSSSSSSSVLGGKCGQPGDSGRTANGLPGRSQALSSSSDEGSPCPGMGGPLDAPGSPACTEPTSRT
 WARGRMDTQPDRKPSRIPTPRGPRRPSGPAELGTWHALHSVTPRAEPDSWM

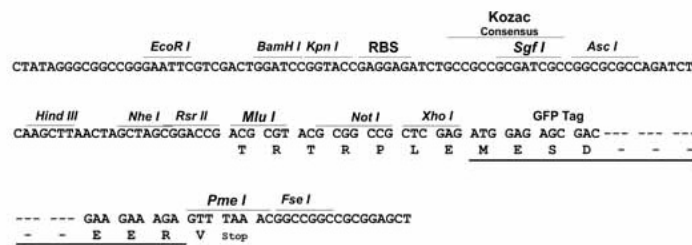
TRTRPLE - GFP Tag - V

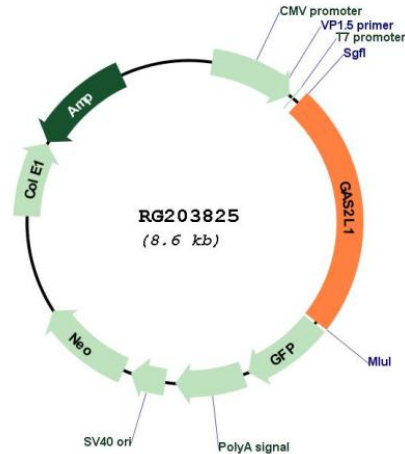
Restriction Sites:

Sgfl-MluI

Cloning Scheme:

Cloning sites used for ORF Shuttling:



Plasmid Map:


ACCN: NM_006478

ORF Size: 2043 bp

OTI Disclaimer: The molecular sequence of this clone aligns with the gene accession number as a point of reference only. However, individual transcript sequences of the same gene can differ through naturally occurring variations (e.g. polymorphisms), each with its own valid existence. This clone is substantially in agreement with the reference, but a complete review of all prevailing variants is recommended prior to use. [More info](#)

OTI Annotation: This clone was engineered to express the complete ORF with an expression tag. Expression varies depending on the nature of the gene.

Components: The ORF clone is ion-exchange column purified and shipped in a 2D barcoded Matrix tube containing 10ug of transfection-ready, dried plasmid DNA (reconstitute with 100 ul of water).

Reconstitution Method:

1. Centrifuge at 5,000xg for 5min.
2. Carefully open the tube and add 100ul of sterile water to dissolve the DNA.
3. Close the tube and incubate for 10 minutes at room temperature.
4. Briefly vortex the tube and then do a quick spin (less than 5000xg) to concentrate the liquid at the bottom.
5. Store the suspended plasmid at -20°C. The DNA is stable for at least one year from date of shipping when stored at -20°C.

RefSeq: [NM_006478.2](#)

RefSeq Size: 2557 bp

RefSeq ORF: 2046 bp

Locus ID: 10634

UniProt ID: [Q99501](#)

Cytogenetics: 22q12.2

Gene Summary: This gene encodes a member of the growth arrest-specific 2 protein family. This protein binds components of the cytoskeleton and may be involved in mediating interactions between microtubules and microfilaments. This protein localizes to the proximal end of mature centrioles and links centrosomes to both microtubules and actin. Alternate splicing results in multiple transcript variants. A pseudogene of this gene is found on chromosome 9. [provided by RefSeq, May 2018]